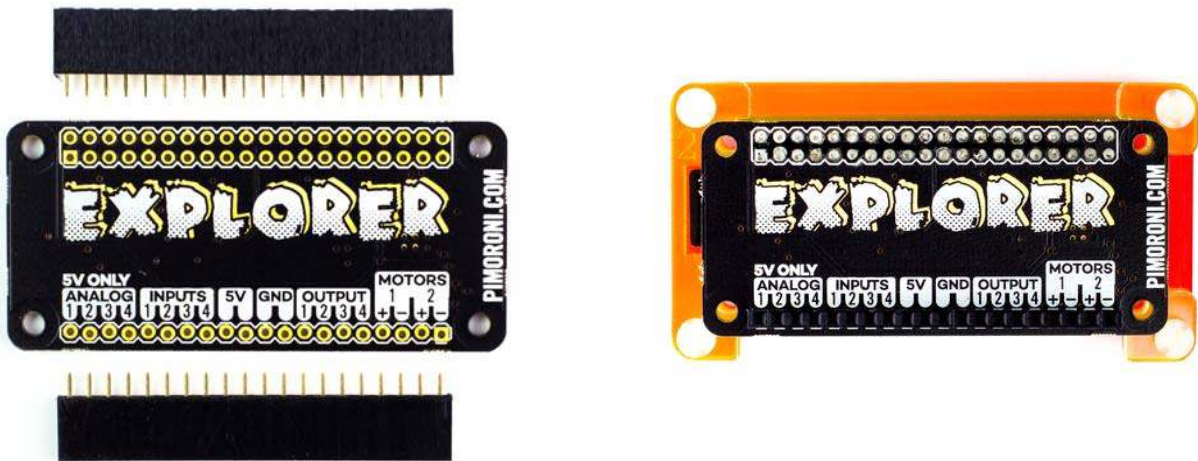


Explorer pHAT

PM137



Explorer pHAT is the perfect prototyping side-kick for your Raspberry Pi!

A more diminutive version of our popular Explorer Hat Pro, it's cheaper and designed to fit perfectly on a Raspberry Pi Zero!

We've added a heap of useful input and output options that will take your projects to the next level. Great for driving motors, using analog sensors, and interfacing with 5V systems (like Arduino).

Perfect for building a tiny robot, or use it with our Explorer HAT Pro parts kit to prototype all sorts of circuits with its LEDs, analog dials, and temperature sensor.

Features

- Four buffered 5V tolerant inputs (perfect for Arduino compatibility)
- Four powered 5V outputs (up to 500mA total across all four channels)
- Four analog inputs
- Two H-bridge motor drivers (up to 200mA per channel; soft PWM control)
- Compatible with Raspberry Pi 3, 2, B+, A+, Zero, and Zero W
- Python library
- **Female headers require soldering**

Software

Explorer pHAT uses the same easy-to-use Python library as Explorer HAT Pro, that includes a bunch of examples to demonstrate Explorer pHAT's functions.

Notes

The inputs use a 5-channel buffer that will accept anything from 2V-5V as logic high.