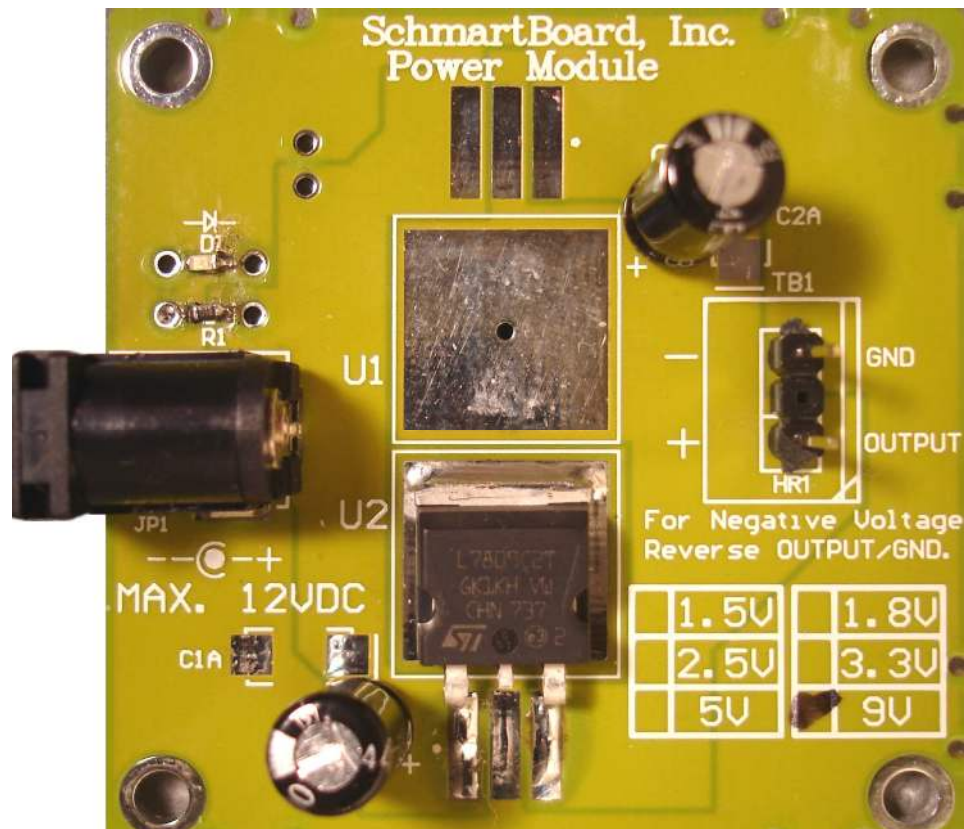


9 Volt Populated Single Voltage Regulated Power SchmartModule



9 Volt Populated Single Voltage Regulated Power Module

9 Volt Power Single Voltage Regulated Module: This is a highly stable linear-low-drop voltage regulator. With 12V DC input, output is 9V and provide up to 1A of output peak current. For Negative Voltage: Reverse Output and Ground.

The amperage rating on these modules are based on the component manufacturer's published specifications. Real-world experience, based on our internal tests will vary from these specifications. The amperage is meant to be a peak not sustained amperage. For successful use at a sustained amperage you will want to draw no more than 50-60% of the published peak rating. Heat sinking the regulator may help increase these numbers. Should you see these numbers exceeded, the voltage will drop.

Schmartboard SchmartModule Family



Schmartboard, Inc.
37423 Fremont Blvd.
Fremont, CA 94536

510-744-9900(P)
510-744-9909(F)
<http://www.schmartboard.com>
<http://www.facebook.com/Schmartboard>
<http://www.twitter.com/Schmartboard>