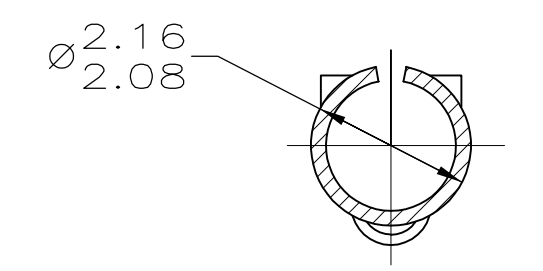
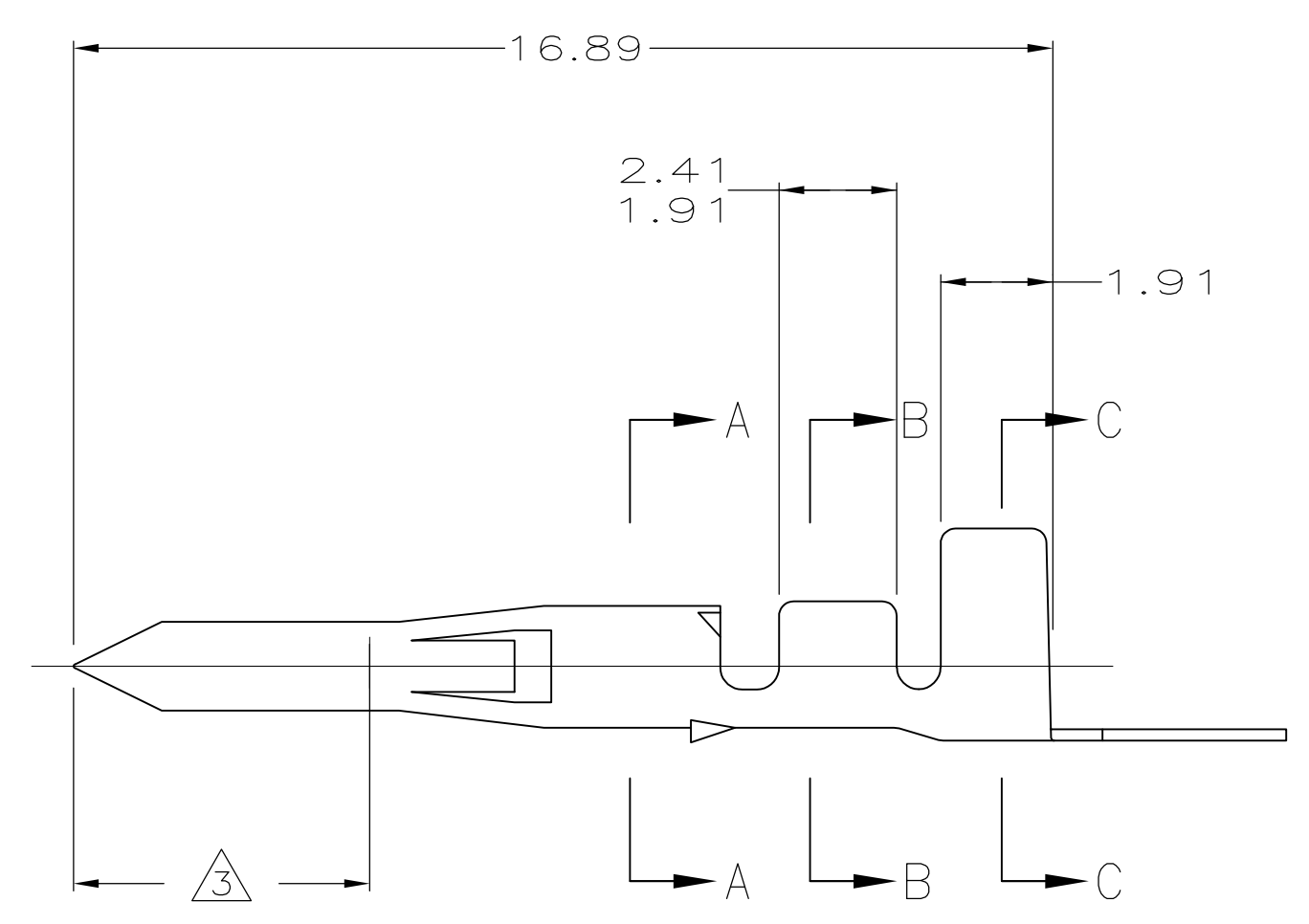
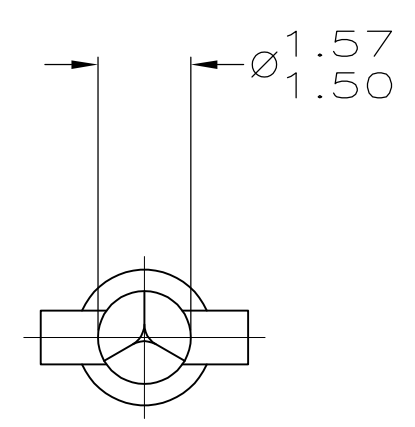
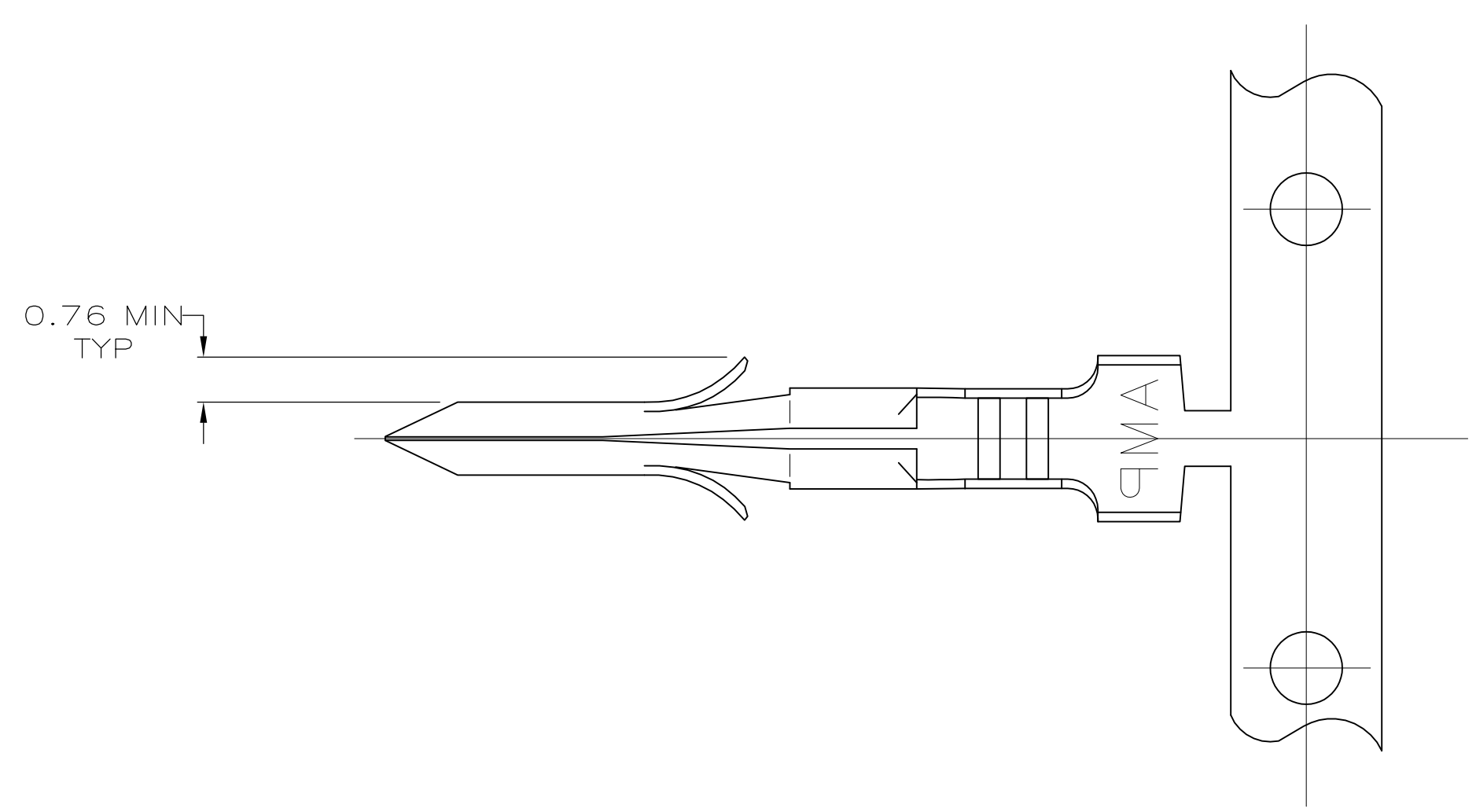
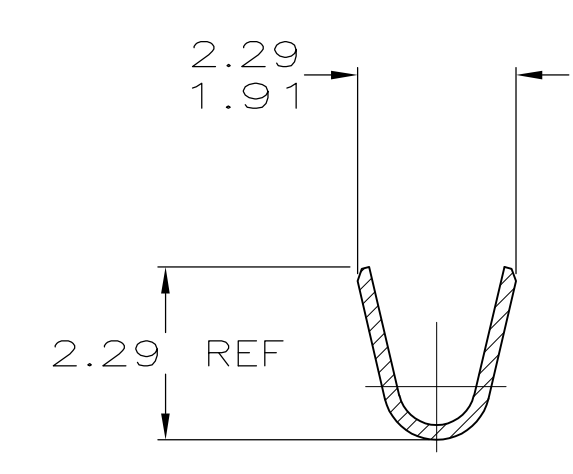


LOC		DIST		REVISIONS			
P	LTR	DESCRIPTION	DATE	DMN	APVD		
U1		REVISED PER ECO-11-004917	11MAR11	RK	HMR		

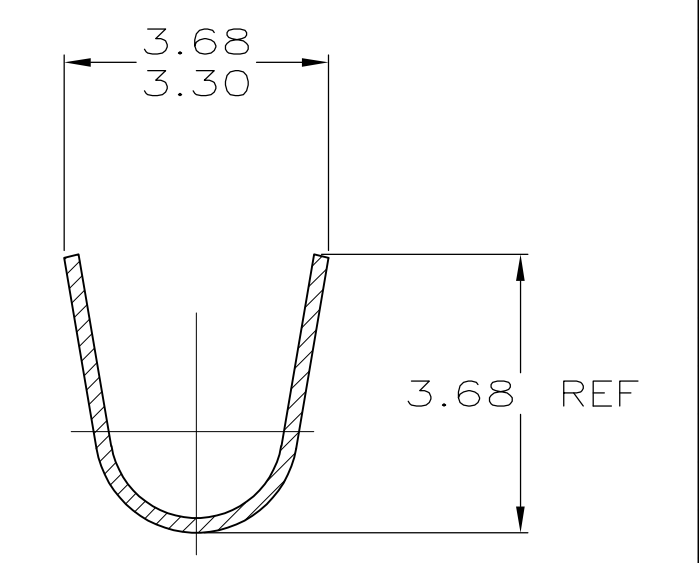
Δ NICKEL OVER ENTIRE TERMINAL WITH 0.00076 THICK GOLD OVER 5.08 LENGTH.



SECTION A-A
SCALE 10:1



SECTION B-B
SCALE 10:1



SECTION C-C
SCALE 10:1

MM	IN	MM	IN	MM	IN
1.50	.059	2.41	.095	-	-
1.27	.050	2.29	.090	16.89	.665
0.76	.030	2.16	.085	5.08	.200
0.20	.008	2.08	.082	3.68	.145
0.13	.005	1.91	.075	3.30	.130
0.00076	0.00030	1.57	.062	2.79	.110

CONVERSION TABLE

PRE-TIN	MATERIAL	INSULATION DIAMETER	WIRE RANGE	PART NO
	0.20 PH BRZ	1.27 - 2.79	0.2 - 0.9 mm ² (24-18 AWG)	350629-8
Δ	0.20 BRASS	1.27 - 2.79	0.2 - 0.9 mm ² (24-18 AWG)	350629-5
PRE-TIN	0.20 BRASS	1.27 - 2.79	0.2 - 0.9 mm ² (24-18 AWG)	350629-1

THIS DRAWING IS A CONTROLLED DOCUMENT.

DIMENSIONS: mm
 TOLERANCES UNLESS OTHERWISE SPECIFIED:
 0. PLC ± -
 1. PLC ± -
 2. PLC ± -
 3. PLC ± 0.13
 4. PLC ANGLES ± -

MATERIAL: SEE TABLE
 FINISH: SEE TABLE

THIS DRAWING IS A CONTROLLED DOCUMENT.
 DWG: B. LEWIS 9-12-90
 CHK: R. SWING 9-13-90
 C: CASH 9-27-90
 NAME: PRODUCT SPEC
 APPLICATION SPEC
 SIZE: A1
 CAGE CODE: 00779
 DRAWING NO: 350629
 WEIGHT: -
 CUSTOMER DRAWING

STE TE Connectivity
 .062 PIN, COMMERCIAL PIN AND SOCKET

SCALE: 8:1
 SHEET: 1 OF 1
 REV: U1