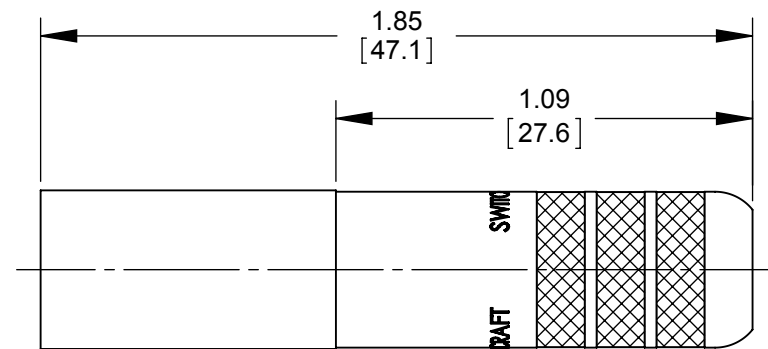
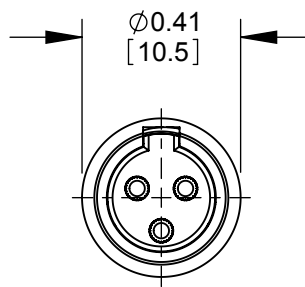
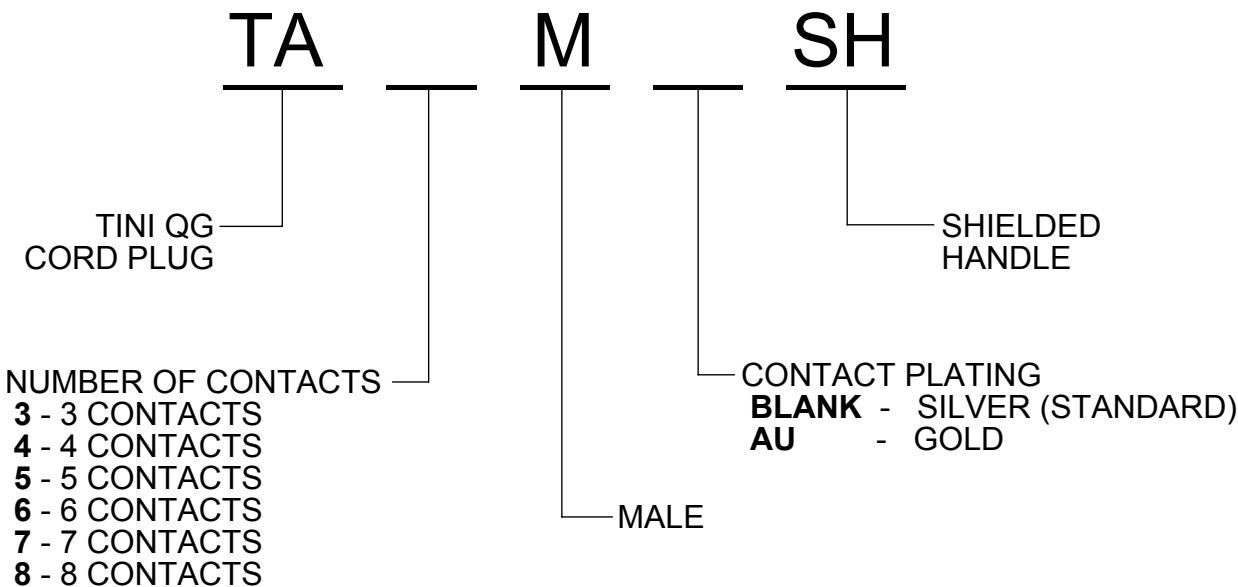
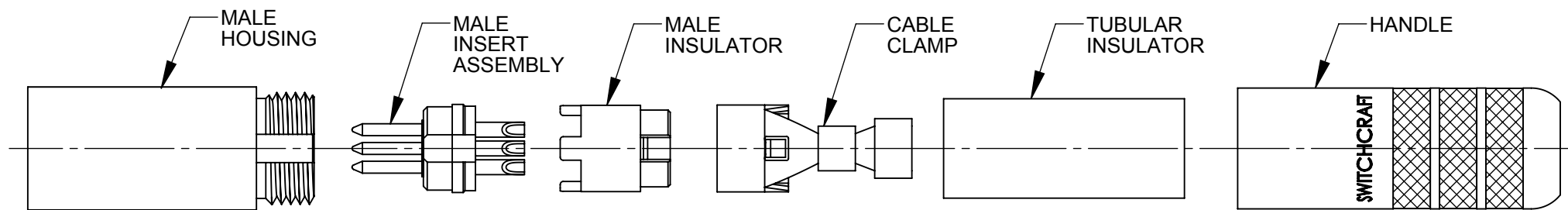


AS VIEWED FROM FRONT MATING VIEW



TA3MSH SHOWN

CUSTOMER DRAWING

NOTES:

- MATERIALS:
 HOUSING - COPPER ALLOY, NICKEL PLATED
 CONTACTS - COPPER ALLOY, SILVER OR GOLD PLATED
 INSERT - THERMOPLASTIC, DARK BROWN
 INSULATOR - THERMOPLASTIC, DARK BROWN
 CABLE CLAMP/GROUND TERMINAL - STEEL, ELECTRO-TIN PLATED
 TUBULAR INSULATOR - FISH PAPER
 HANDLE - COPPER ALLOY, NICKEL PLATED
- THIS PRODUCT IS RoHS COMPLIANT.

REV	ECO NUMBER	DATE	BY	APVD
A	27648	01/28/16	PC	TJK
REVISIONS				

UNLESS OTHERWISE SPECIFIED

1. ALL DIMENSIONS IN INCHES [mm]
 - TWO PLACE DECIMALS ±0.02 [0.5]
 - THREE PLACE DECIMALS ±0.005 [0.13]

DO NOT SCALE DRAWING

THIS DRAWING DESCRIBES A DESIGN CONSIDERED PROPRIETARY IN NATURE, DEVELOPED AND MANUFACTURED BY SWITCHCRAFT INC. AND IS RELEASED ON A CONFIDENTIAL BASIS FOR IDENTIFICATION PURPOSES ONLY.									
SIZE	WIDTH	MULT	LBS/M	TEMPER					
FINISH					MATERIAL				
SPEC No.					SPEC No.				
FIRST USED ON			SCALE		Switchcraft [®]				
			2:1						
DATE DRAWN	BY	CHKD	APVD						
07/15/09	BS	TJK	TJK						
		02/04/16	02/04/16						
NAME				PART No.			REV		
MALE TINI QG SHIELDED, RoHS				TA_MSH SERIES			A		