



CERAMIC DIELECTRIC TRIMMER CAPACITORS

## SURFTRIM<sup>®</sup> SURFACE MOUNT GKY LOW PROFILE SERIES

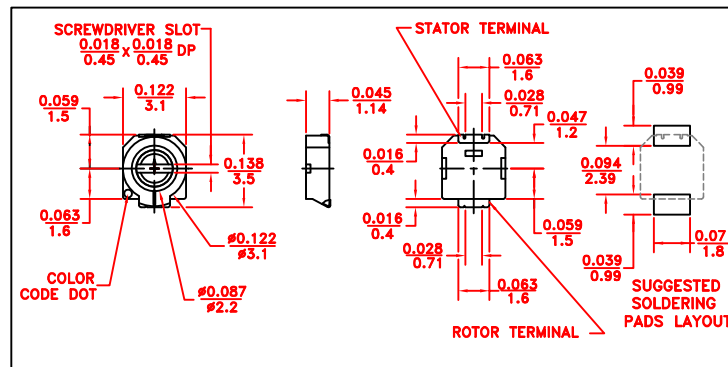
### FEATURES

- Suitable for reflow soldering
- Superior setting drift performance
- Low mounting profile (only 1.45 mm.)
- Carrier and reel packaging
- Dust resistant design

### SPECIFICATIONS

- Operating Temperature Range: -25°C to +85°C
- Insulation Resistance: 10 Megohms min.
- Torque: 10 to 72 g-sm (0.14 to 1.0 oz-in)

Model No.	Capacitance Range (pF)		DC Working Voltage	DC Withstanding Voltage	Q Min (1MHz)	SRF at max. rated capacitance (GHz)	Temperature Coefficient (ppm/°C)	Color Code
	Min	Max						
GKY3R056	1.5	3.0	100	220	500	2.1	0±200	Black
GKY6R056	2.0	6.0	100	220	500	1.5	0±300	Blue
GKY8R056	3.0	8.0	100	220	500	1.3	-750±500	Violet
GKY10056	2.0	10.0	50	110	500	1.2	0±300	None
GKY15056	3.0	15.0	50	110	500	0.92	0±500	Pink
GKY20056	4.5	20.0	50	110	500	0.81	0±500	Red
GKY30056	5.5	30.0	50	110	200	0.70	-750±500	Orange
GKY40056	8.0	40.0	50	110	200	0.60	-750±500	Yellow

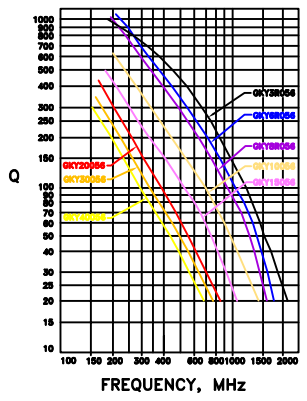


All dimensions are in/mm, unless otherwise specified,  
tolerance on dimensions ± 0.008/0.2

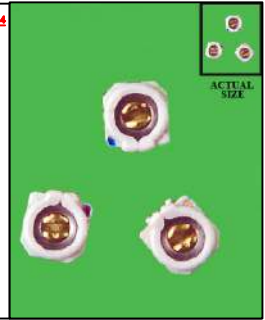
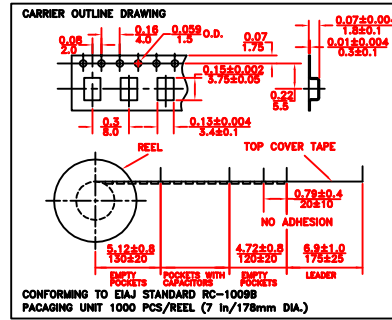
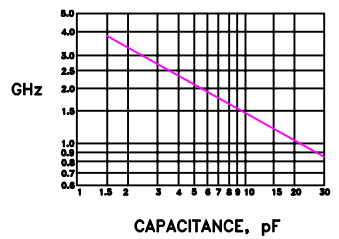


CERAMIC DIELECTRIC TRIMMER CAPACITORS  
GKY LOW PROFILE SERIES

QUALITY FACTOR (Q)  
OF GKY\_\_\_56 SERIES CAPACITORS



SELF-RESONANT FREQUENCY  
OF GKY\_\_\_56 SERIES CAPACITORS



All dimensions are in/mm, unless otherwise specified,  
tolerance on dimensions ± 0.008/0.2