

4

3

2

1


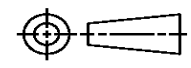
THIS DRAWING IS UNPUBLISHED. RELEASED FOR PUBLICATION
© COPYRIGHT ALL RIGHTS RESERVED.

LOC		DIST		REVISIONS			
P	LTR	DESCRIPTION		DATE	DWN	APVD	
	H1	ECR-16-011296		03OCT2016	GK	SD	

REPLACED BY OCEAN STYLE APPLICATOR PART NUMBER 2836325-1

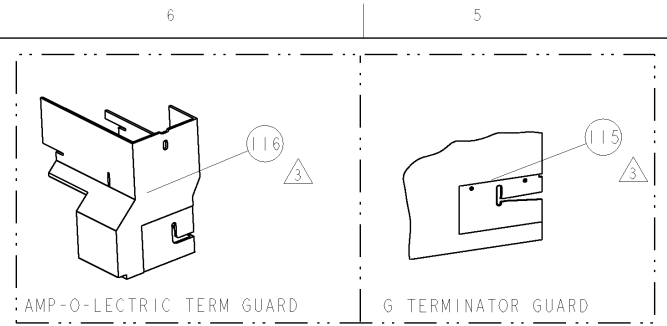
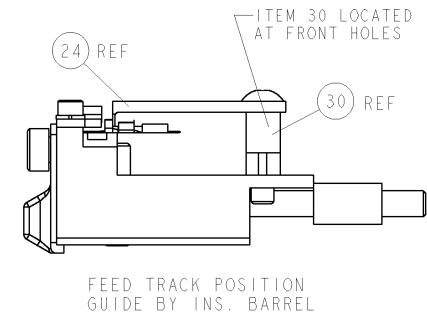
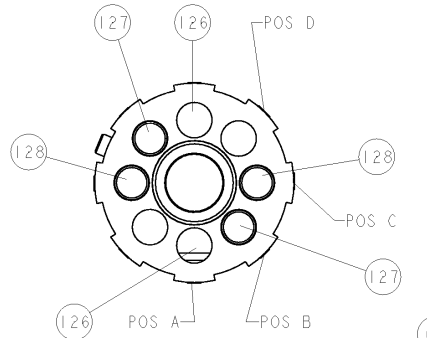
FOR REPLACEMENT PARTS FOR APPLICATOR 466449
REFER TO ADDITIONAL PAGE(S). SPARE PARTS KIT (IF LISTED)
WILL REMAIN AVAILABLE.

THE REPLACEMENT OCEAN STYLE APPLICATOR HAS THE
SAME TERMINATOR/PRESS INTERFACE AS APPLICATOR
466449

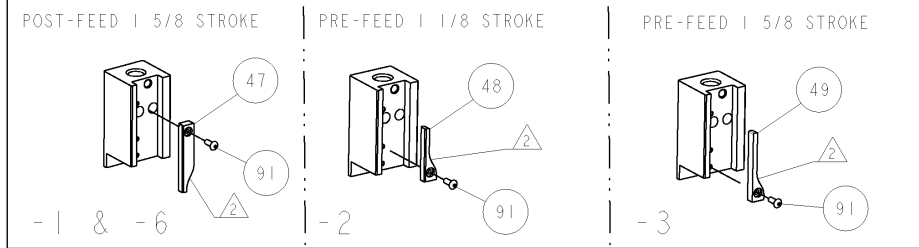
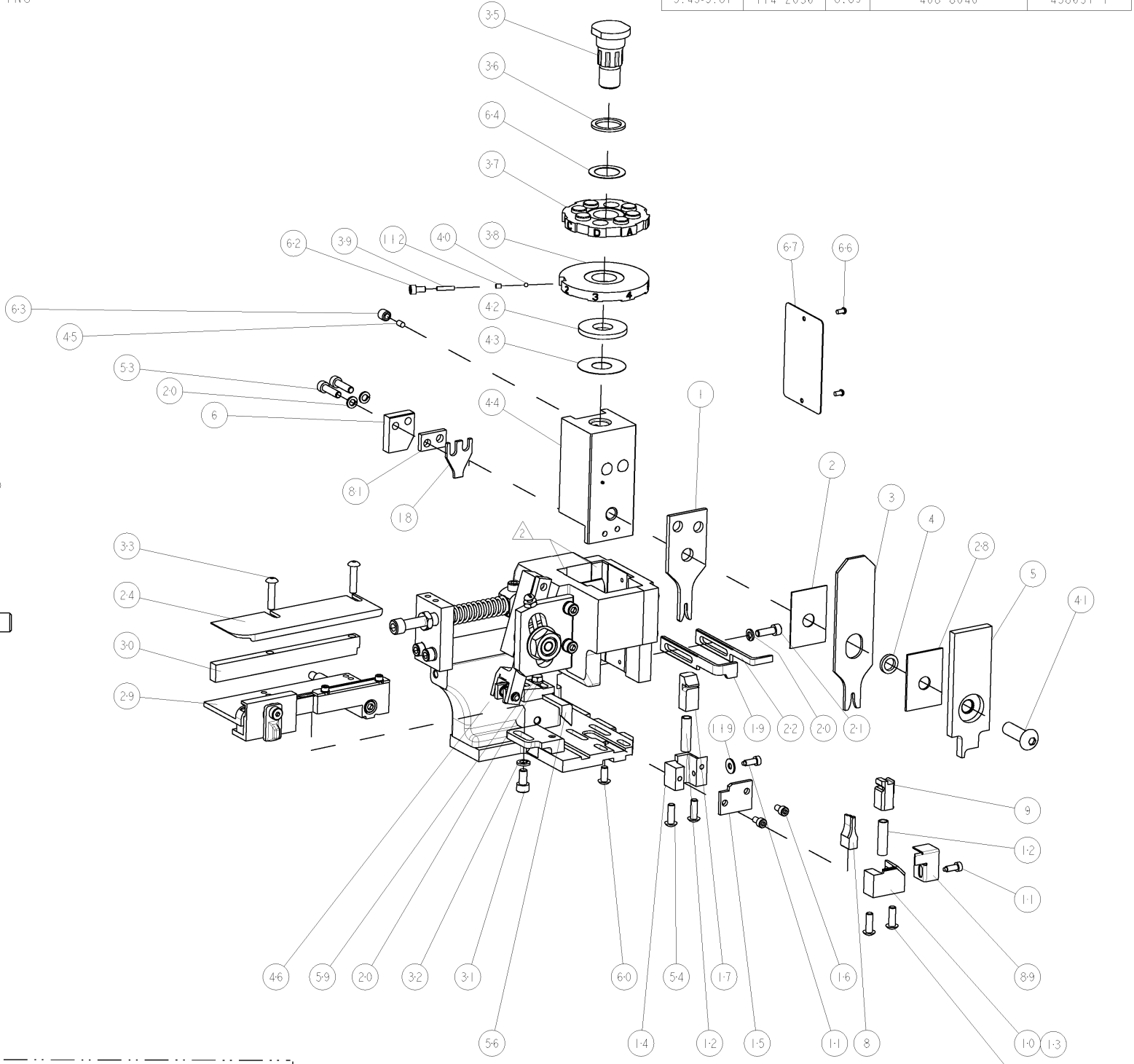
THIS DRAWING IS A CONTROLLED DOCUMENT.		DWN	GOPALAKRISHNA HV			TE Connectivity			
DIMENSIONS:		CHK	GOPALAKRISHNA HV			NAME			
		TOLERANCES UNLESS OTHERWISE SPECIFIED:		HDM SIDE FEED APPLICATOR					
		0 PLC	±	APVD	STOUGH DALE		PRODUCT SPEC		
MATERIAL		1 PLC	±	APPLICATION SPEC		SIZE	CAGE CODE	DRAWING NO	RESTRICTED TO
FINISH		2 PLC	±	WEIGHT		A3		©- 466449	
		3 PLC	±	CUSTOMER DRAWING		SCALE	SHEET 1 OF 2	REV H1	
		4 PLC	±						
		ANGLES	±						

PART NUMBER	REV	FIRST USED	POWER UNIT	FEED TYPE	DESCRIPTION
466449-1	H	122500-1	LEADMAKER	POST FEED	CUTS CARRIER
466449-2	H	565435-5	BENCH MODEL K	PRE FEED	CUTS CARRIER
466449-3	H	354500-1	BENCH MODEL G	PRE FEED	CUTS CARRIER
466449-6	H	122500-1	LEADMAKER	POST FEED	CONTINUOUS CARRIER
7-466449-7	H	-	-	-	SPARE PARTS

- △ RECOMMENDED SPARE PARTS
- △ GREASE LIGHTLY
- △ GUARD MUST BE IN PLACE WHEN OPERATING APPLICATOR IN A BENCH MACHINE



TE PN		TE CRIMP SPECS	
60900	-	CRIMP HEIGHT	WIRE SIZE
62020	-	A .99mm+.05/- .05 [.039+.002/- .002]	20AWG
62398	-	B .91mm+.05/- .05 [.036+.002/- .002]	22AWG
63887	-	C .81mm+.05/- .05 [.032+.002/- .002]	24AWG
63904	-	D	-
63976	-	-	-
1217103	-	CRIMP	SIZE TYPE RANGE
-	-	WIRE	1.40mm [.055] F 24-20 AWG
-	-	INSUL	2.29mm [.090] O Ø1.016 - 2.032
WIRE STRIP LENGTH	3.43-3.81	TERM APPL SPEC	114-2036
FEED	8.89	APPLICATOR INSTRUCTIONS	408-8040
SET UP GAGE	458637-1		



REV	DESCRIPTION	DATE	BY	APPV
1	DEVELOPMENT	15DEC2008	Y. YIN	D. N.
2	RELEASED	01JAN2009	MEH	TE

REV	QTY	DESCRIPTION	ITEM NO			
-	2	2	2	5-354779-8	PIN, WIRE DISC, .3280	128
-	2	2	2	4-354779-6	PIN, WIRE DISC, .3220	127
-	2	2	2	4-354779-0	PIN, WIRE DISC, .3190	126
-	1	1	1	21055-5	WASHER, FLAT, REG NO 6	119
-	-	REF	-	455749-1	GUARD WINDOW	116
-	-	REF	-	679532-1	INSERT, GUARD	115
-	1	1	1	690603-1	SPRING ASSIST AMP-O-MATOR APPLICATOR	112
-	1	1	1	1-21002-7	SCR, BTN SKT HD CAP 6-32 X .375	91
-	1	1	1	318563-1	GUARD, FRONT CHIP	89
-	1	1	1	240641-5	SPACER	81
-	1	1	1	4088040	SF APPL INST 408-8040	72
-	1	1	1	217238-1	GENERAL INSTRUCTION PKG	71
-	1	1	1	461264-1	PLATE, IDENTIFICATION	67
-	2	2	2	21017-2	SCREW, DRIVE	66
-	1	1	1	986950-1	WASHER, FLAT PRECISION	64
-	1	1	1	21009-2	SCR, SET, SELF LOCKING 1/4-20 X .250	63
-	1	1	1	23030-1	SCR, SKT HD CAP 6-32 X .25	62
-	1	1	1	22733-8	SCR, BHSC, SELF-LOCKING, 8-32 X .375	60
-	1	1	1	2-22603-0	SCR, HEX HD CAP 8-32 X .312	59
-	1	1	1	458537-2	PAWL, FEED	56
-	4	4	4	2-21002-2	SCR, BTN SKT HD CAP 8-32 X .500	54
-	2	2	2	2-21000-8	SCR, SKT HD CAP 8-32 X .625	53
-	-	-	-	690602-6	CAM, PRE FEED, 1 5/8	49
-	-	-	-	690602-5	CAM, PRE FEED, 1 1/8	48
-	1	1	1	690501-4	CAM, POST-FEED 1 5/8	47
-	1	1	1	459456-1	APPL, BASIC SUB ASSY (SIDE WISE MOCA)	46
-	1	1	1	690191-1	PLUG, NYLON	45
-	1	1	1	455673-1	RAM, SIDE FEED	44
-	1	1	1	690125-1	SHIM SUB-ASSY	43
-	1	1	1	690124-1	WASHER, RAM (.115)	42
-	1	1	1	7-21002-9	SCR, BTN SKT HD CAP 5/16-24 X 1.00	41
-	1	1	1	23241-6	BALL, STEEL	40
-	1	1	1	690170-1	SPRING, COMPRESSION	39
-	1	1	1	690142-1	DISC, INSULATION	38
-	1	1	1	354777-1	WIRE DISC, ASSEMBLY	37
-	1	1	1	22480-5	SPRING, COMPRESSION	36
-	1	1	1	690212-1	POST, RAM	35
-	2	2	2	2-21002-4	SCR, BTN SKT HD CAP 8-32 X .750	33
-	1	1	1	21024-5	WASHER, SPRG LOCK, REG NO 10	32
-	1	1	1	3-21000-4	SCR, SKT HD CAP 10-32 X .375	31
-	1	1	1	1-1320908-7	SPACER, STRIP GUIDE	30
-	1	1	1	1633091-1	ASSEMBLY, STRIP GUIDE	29
-	1	1	1	1-455888-0	SPACER, CRIMPER	28
-	1	1	1	1320928-1	PLATE, STRIP GUIDE	24
-	1	1	1	690472-2	STRIPPER	22
-	1	1	1	2-21000-7	SCR, SKT HD CAP 8-32 X .500	21
-	4	4	4	21024-4	WASHER, SPRG LOCK, REG NO 8	20
-	-	-	-	691353-1	STRIPPER	19
-	1	1	1	690518-2	HOLD DOWN, TERMINAL	18
-	1	1	1	690463-1	FLOATING SHEAR, REAR	17
-	2	2	2	1-21000-8	SCR, SKT HD CAP 6-32 X .250	16
-	1	1	1	690464-2	SHEAR PLATE, REAR	15
-	-	-	-	690462-1	SHEAR HOLDER, REAR	14
-	1	1	1	679625-1	SHEAR HOLDER, FRONT (NO CUT)	13
-	2	2	2	3-22280-3	SPRING, COMPRESSION	12
-	2	2	2	690461-1	STOP, SHEAR	11
-	-	-	-	690459-1	SHEAR HOLDER, FRONT	10
-	1	1	1	454276-1	FLOATING SHEAR, FRONT	9
-	1	1	1	690512-9	ANVIL, COMBINATION	8
-	-	-	-	-	-	7
-	1	1	1	690468-1	DEPRESSOR SHEAR, REAR	6
-	1	1	1	455889-9	DEPRESSOR, SHEAR	5
-	1	1	1	2-238011-2	BLOCK, CRIMPER SPACER	4
-	1	1	1	4-456135-4	CRIMPER, INSULATION O PREMIUM	3
-	1	1	1	455888-5	SPACER, CRIMPER	2
-	1	1	1	1-456402-4	CRIMPER, WIRE PREMIUM	1

DIMENSIONS: INCHES		TOLERANCES UNLESS OTHERWISE SPECIFIED:	
0 PLC	±	1 PLC	±0.1
1 PLC	±	2 PLC	±0.01
2 PLC	±	3 PLC	±0.001
3 PLC	±	4 PLC	±0.0001
4 PLC	±	ANGLES	±0.0001