

7

6

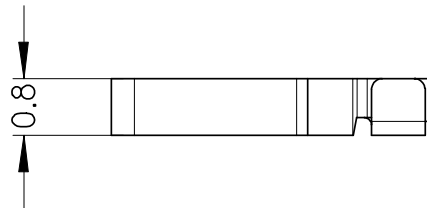
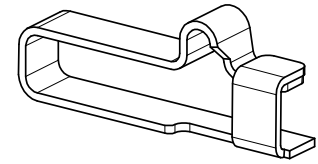
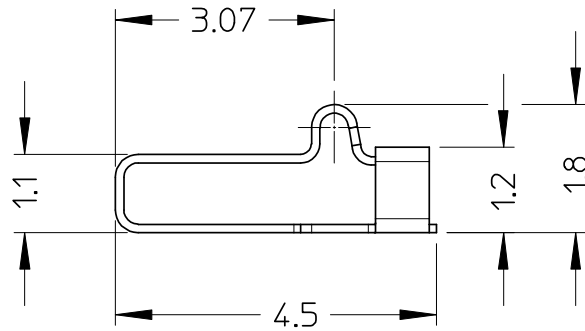
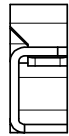
5

4

3

2

1



NOTES:

- 1. MATERIAL: BERYLLIUM COPPER 0.127 mm THICK.
0.07 μm MIN. Au OVER 1.27 μm MIN. Ni
- 2. CONTACT NORMAL FORCES @0.4 mm
DEFLECTION 0.30 N ±0.15 N
- 3. PACKAGING: T&R 8000 PCS/REEL,
8 REEL/BOX (SPQ=64000 PCS)

Std.Descr.: "MICRO SPRING CONTACT"

ENTER DESCRIPTION EC NO: Z2008-0143 DRWN:FGOTTARD 2008/03/17 CHKD:LSANTESSO 2008/03/17 APPR:GZUIN 2008/03/18	DESCRIPTION REV	QUALITY SYMBOLS ▽=0 ▽=0	GENERAL TOLERANCES (UNLESS SPECIFIED)		DIMENSION STYLE MM ONLY	SCALE 10:1	DESIGN UNITS METRIC	FIRST ANGLE PROJECTION			
				mm	INCH	DRAWN BY FGOTTARDO	DATE 2008/14/03	TITLE MICRO SPRING CONTACT			
			4 PLACES ± ---	± ---	± ---	CHECKED BY RSANDANO	DATE 2008/14/03	MOLEX INCORPORATED DOCUMENT NO. SD-94328-001 SHEET NO. 1 OF 1			
			3 PLACES ± ---	± ---	± ---	APPROVED BY GZUIN	DATE 2008/14/03				
2 PLACES ± 0.10	± ---	± ---	ANGULAR ± ---°		DRAFT WHERE APPLICABLE MUST REMAIN WITHIN DIMENSIONS						
1 PLACE ± 0.15	± ---	± ---									

6

5

4

3

2

1

7

6

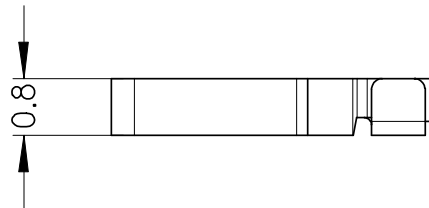
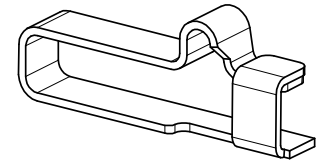
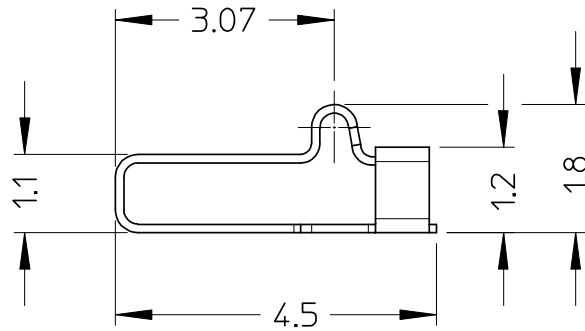
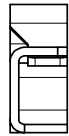
5

4

3

2

1



NOTES:

1. MATERIAL: BERYLLIUM COPPER 0.127 mm THICK.
0.07 μm MIN. Au OVER 1.27 μm MIN. Ni
2. CONTACT NORMAL FORCES @0.4 mm
DEFLECTION 0.30 N ±0.15 N
3. PACKAGING: T&R 8000 PCS/REEL,
8 REEL/BOX (SPQ=64000 PCS)

Std.Descr.: "MICRO SPRING CONTACT"

ENTER DESCRIPTION EC NO: Z2008-0143 DRWN:FGOTTARD 2008/03/17 CHKD:LSANTESSO 2008/03/17 APPR:GZUIN 2008/03/18	DESCRIPTION REV	QUALITY SYMBOLS ▽=0 ▽=0	GENERAL TOLERANCES (UNLESS SPECIFIED)		DIMENSION STYLE MM ONLY		SCALE 10:1	DESIGN UNITS METRIC	FIRST ANGLE PROJECTION			
				mm	INCH	DRAWN BY FGOTTARDO	DATE 2008/14/03	TITLE MICRO SPRING CONTACT				
			4 PLACES	± ---	± ---	CHECKED BY RSANDANO	DATE 2008/14/03					
			3 PLACES	± ---	± ---	APPROVED BY GZUIN	DATE 2008/14/03	MOLEX INCORPORATED DOCUMENT NO. SD-94328-001 SHEET NO. 1 OF 1				
2 PLACES	± 0.10	± ---	DRAFT WHERE APPLICABLE MUST REMAIN WITHIN DIMENSIONS									
1 PLACE	± 0.15	± ---	ANGULAR ± ---°		MATERIAL NO. 94328-5001							

6

5

4

3

2

1