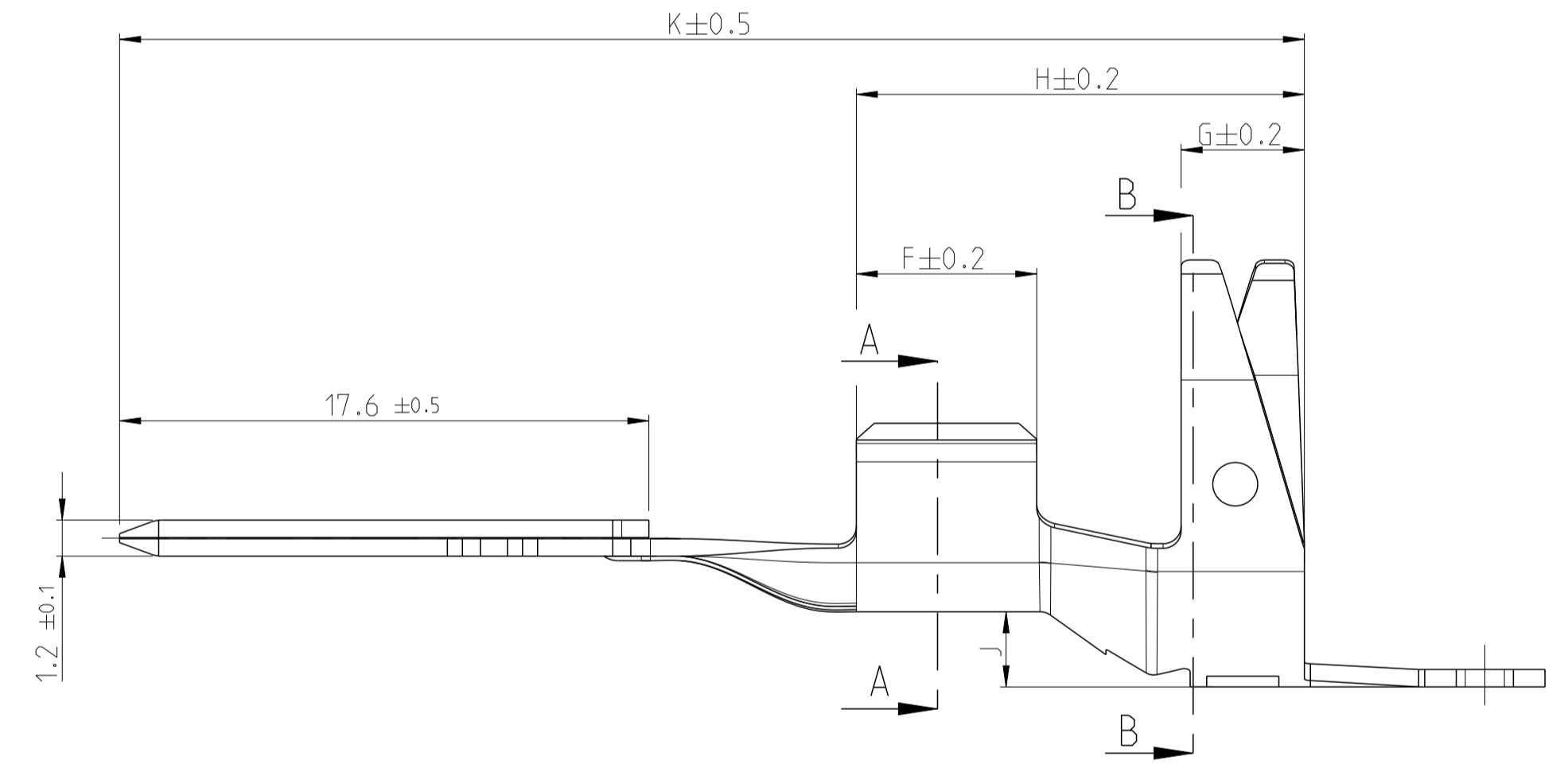
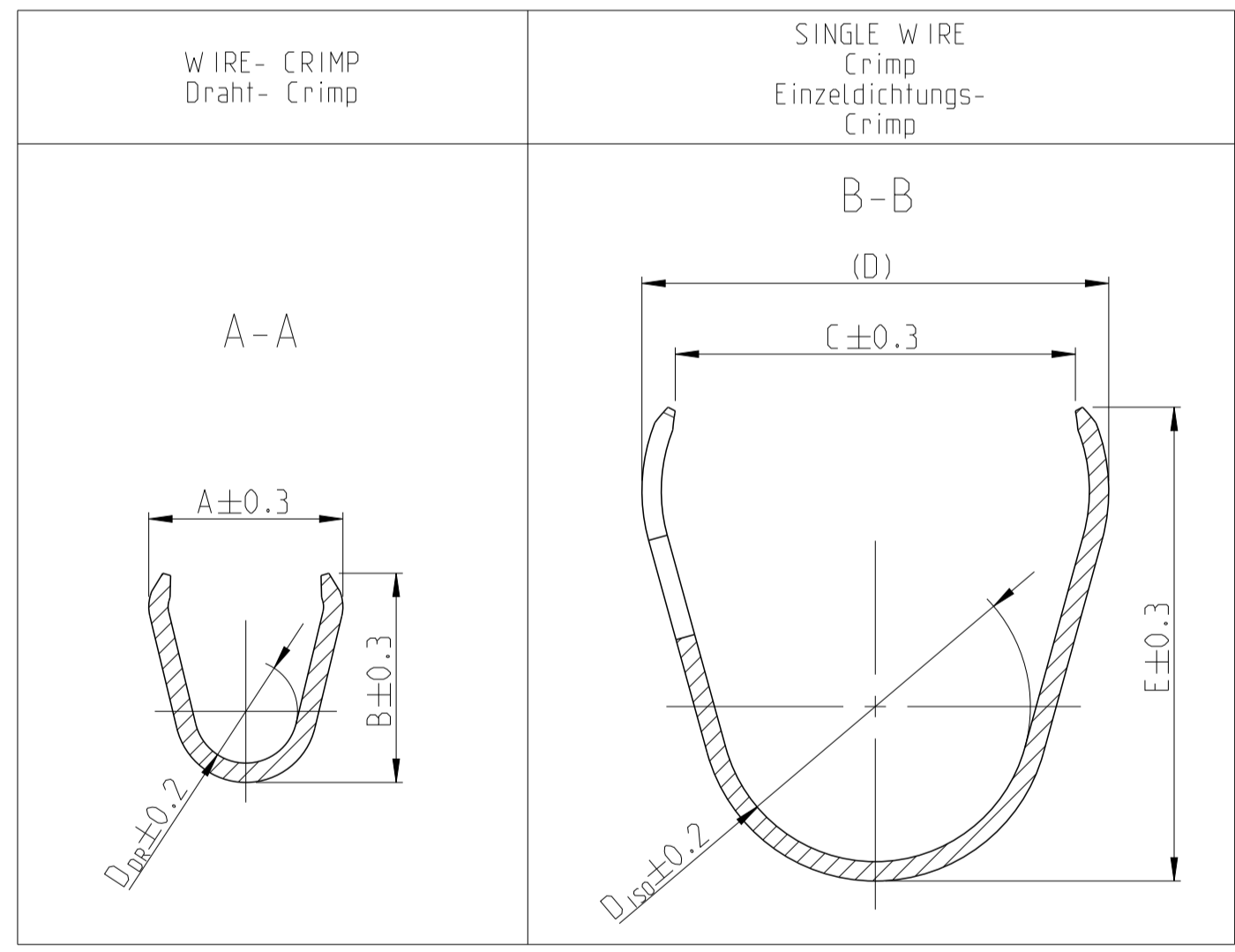
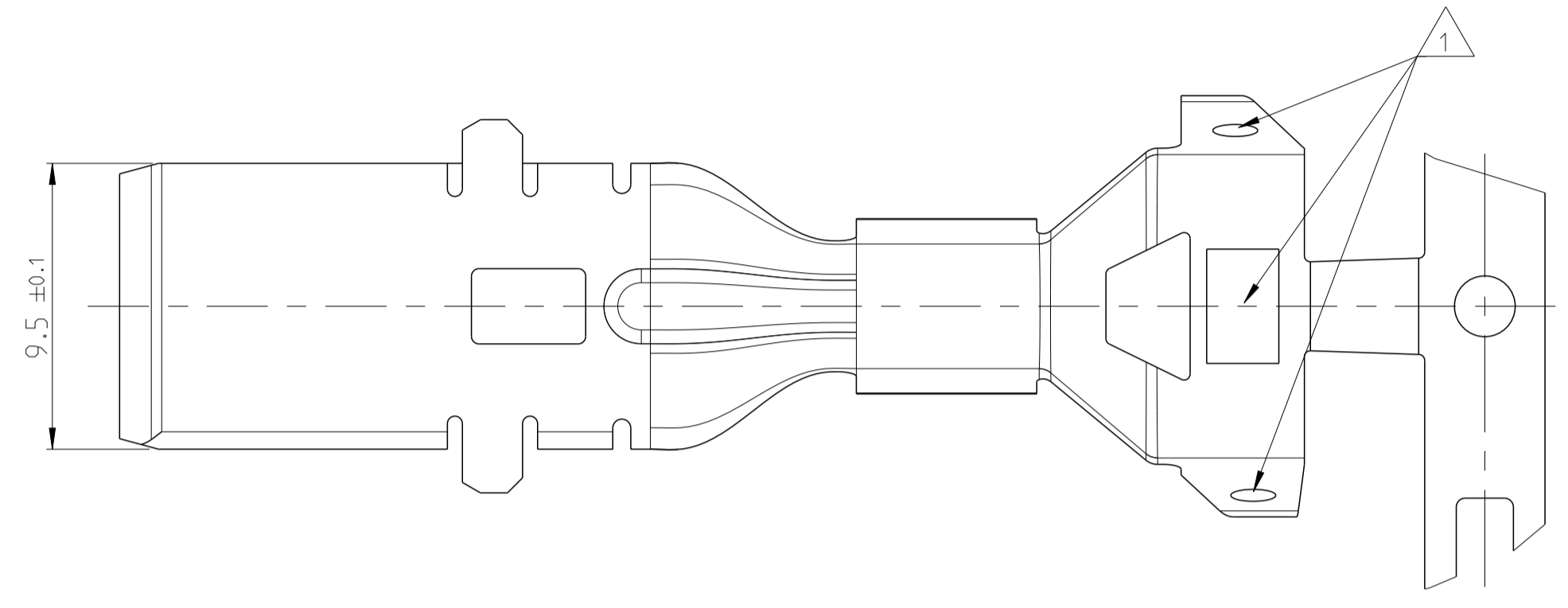


PROJEKT NR.:		REVISIONS ÄNDERUNGEN			
P.	LTR.	DESCRIPTION BESCHREIBUNG	DATE	DWN	APVD
B	ECR-15-010947		23JUL2015	SG	BH
B1	ECR-16-006866		19MAY2016	EH	BH
B2	ECR-16-007599		25MAY2016	EH	BH
B3	ECR-17-004538		29MAR2017	SM	BH

- Bemerkungen  
NOTES
- 1 TE Logo, Änderungsstand, Datumcode  
TE LOGO, REVISION STATUS, DATE CODE
  - 2 Feuerleitung nach GMW 15626 Thin Wall  
FOR WIRE SEE GMW 15626 THIN WALL



3-2287018-3	-	CuFe2P R365	SILVER PLATED versilbert	16													
2-2287018-3	B	CuFe2P R365	SILVER PLATED versilbert	8-10	7.3	7.7	4.2	12.5	(14,5)	14	10	7	4.1	15.9	2.5	40.4	2287382-2 (10mm <sup>2</sup> )
2-2287018-1	A		HOT-DIPED TINNED feuert verzinkt														2287382-5 (8mm <sup>2</sup> )
1-2287018-3	B	CuFe2P R365	SILVER PLATED versilbert	4-6	5.82	6.27	3.1	12	(14)	14.2	9.3	6	4.1	14.9	2.5	39.4	2287382-1 (6mm <sup>2</sup> )
1-2287018-1	B		HOT-DIPED TINNED feuert verzinkt														2287382-4 (4mm <sup>2</sup> )

TE ORDER-NO. STRIP FORM	REV./Rev.	BODY Kontakt- koerper	BODY Kontakt- koerper	WIRE RANGE Draht- groessen- bereich	A	B	D <sub>Dr</sub>	C	(D)	E	D <sub>ISO</sub>	F	G	H	J	K	Ø (mm)		
					WIRE CRIMP Drahtcrimp		INSULATION CRIMP Isolationscrimp												
Bestell-Nr. Bandware		MATERIAL Werkstoff	SURFACE Oberflaeche	(mm <sup>2</sup> )	STRIP FORM/Bandware														SINGLE WIRE SEAL FOR CAVITY DIAMETER Einzelidichtung Kammerdurchmesser TE NO.
																		2	

THIS DRAWING IS A CONTROLLED DOCUMENT.  
DIMENSIONING AND TOLERANCING PER GPS (ISO STANDARDS)

TOLERANCING ISO 8015  
TOLERIERUNG ISO 8015

DWN: S. G. 26MAY2015  
CHK: M. Schambach 26MAY2015  
APVD: B. Hielscher 26MAY2015

NAME: TAB 9.5mm x 1.2mm SEALED

SIZE: A1  
CAGE CODE: 00779  
DRAWING NO: 2287018  
REVISION: B3

RESTRICTED TO NEW PUR -

CUSTOMER DRAWING /KUNDENZEICHNUNG SCALE: 5:1 SHEET: 1 OF 1 REV: B3