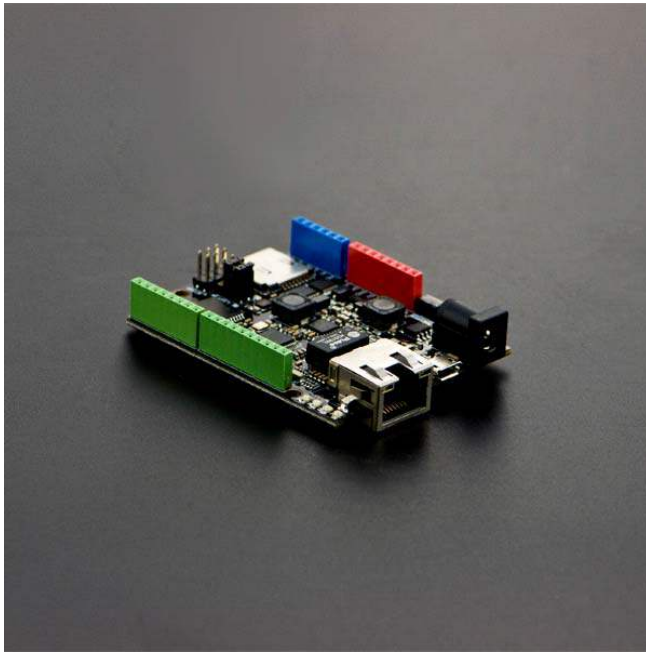




W5500 Ethernet with POE Mainboard SKU: DFR0342

From Robot Wiki



Contents

- 1 Introduction
- 2 Specification
- 3 Pinout Diagram
- 4 Tutorial
 - 4.1 Preparation
 - 4.2 Step 1: Connections
 - 4.3 Step 2: Library
 - 4.4 Step 3: Pin Definitions
 - 4.5 Example
 - 4.6 Check that it works
- 5 POE Power Supply

Introduction

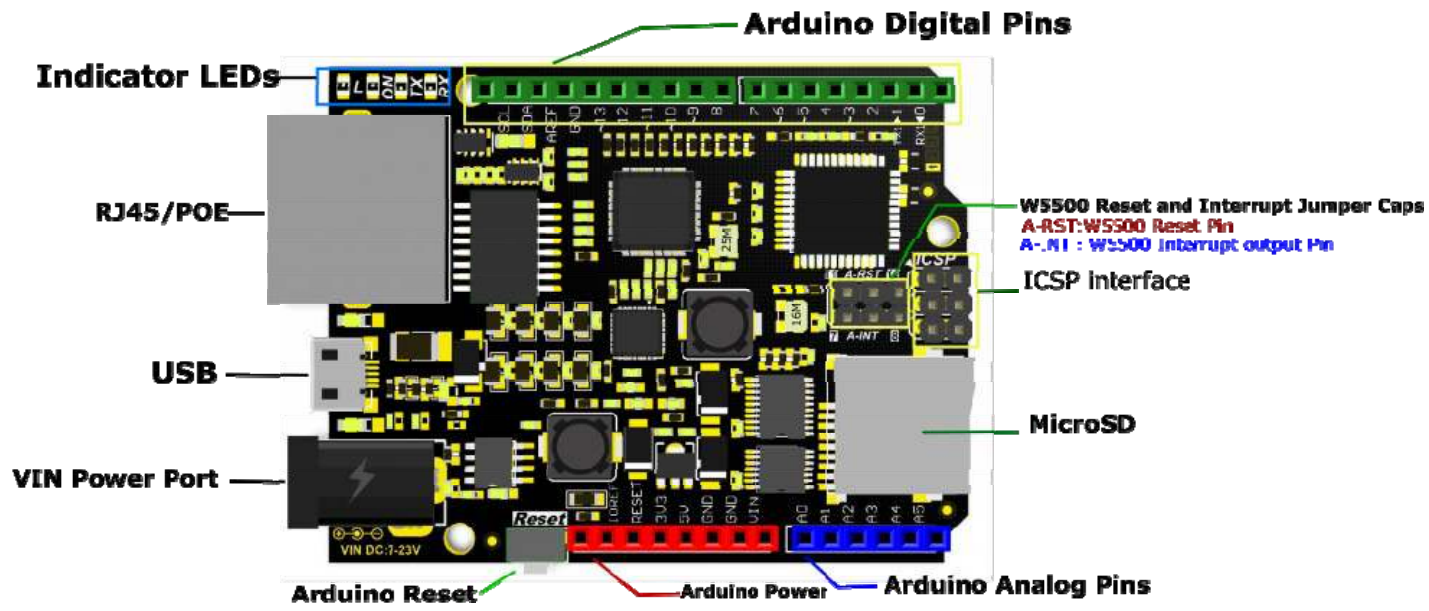
The W5500 Ethernet mainboard is the newest member of the DFRobot Ethernet family. It is a microcontroller based on the ATmega32u4 and W5500 Ethernet chip with the same footprint as an Arduino Leonardo board, as well as being compatible with most Arduino shields and sensors, making it suitable for many kinds of IOT applications. The W5500 chip is a hardwired TCP/IP embedded Ethernet chip that provides easy internet connection for embedded systems. The board has the TCP/IP stack, 10/1000 ethernet MAC and PHY embedded, allowing internet connectivity in the user's application using just the board and nothing else. The W5500 Ethernet mainboard uses a high-efficiency SPI protocol which supports a speed of 80MHz for high speed network communication. In order to reduce power consumption it also includes WOL (wake on LAN) and power down modes. The board can be powered using a regular VIN, or POE as the power supply. It also integrates a power regulation chip that allows it to work under a complex environment.

Specification

- Microcontroller: Atmel Atmega32u4 (Arduino Leonardo)
- External Input Voltage Range (recommended): 7V~20V DC
- External Input Voltage Range (limit): 6-23V
- POE Input Voltage: 48V AC/DC (802.3af standard PD device)
- Digital I/O Pins: 20
- Analog I/O Pins: 6
- DC Current per I/O Pin: 40 mA
- Flash Memory: 32 KB (ATmega32u4) (4KB used by bootloader)
- SRAM: 2 KB (ATmega32u4)
- EEPROM: 1 KB (ATmega32u4)
- Clock Speed: 16 MHz
- PHY: WIZnet W5500
- PHY Clock Speed: 25MHz
- Dimension: 73.5 x 53.5x15mm

Pinout Diagram

We recommend that you remove the jumper caps if you don't need to use the W5500 reset and interrupt functions, or pins 7, 8, 11 or 12 may not function properly.



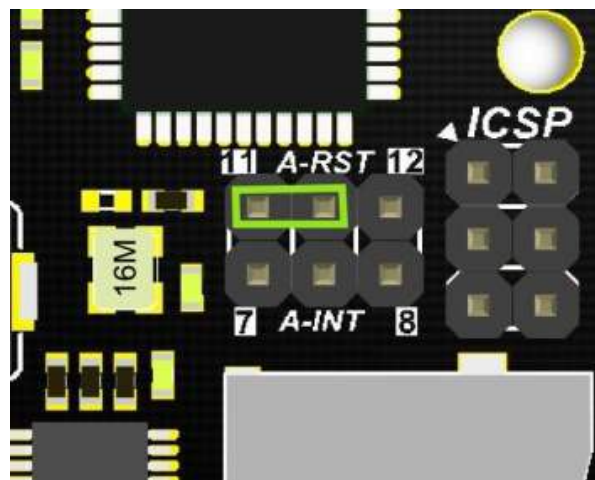
Tutorial Preparation

You will need:

1. W5500 Ethernet with POE Mainboard
2. Micro USB cable
3. PC
4. RJ45 network cable

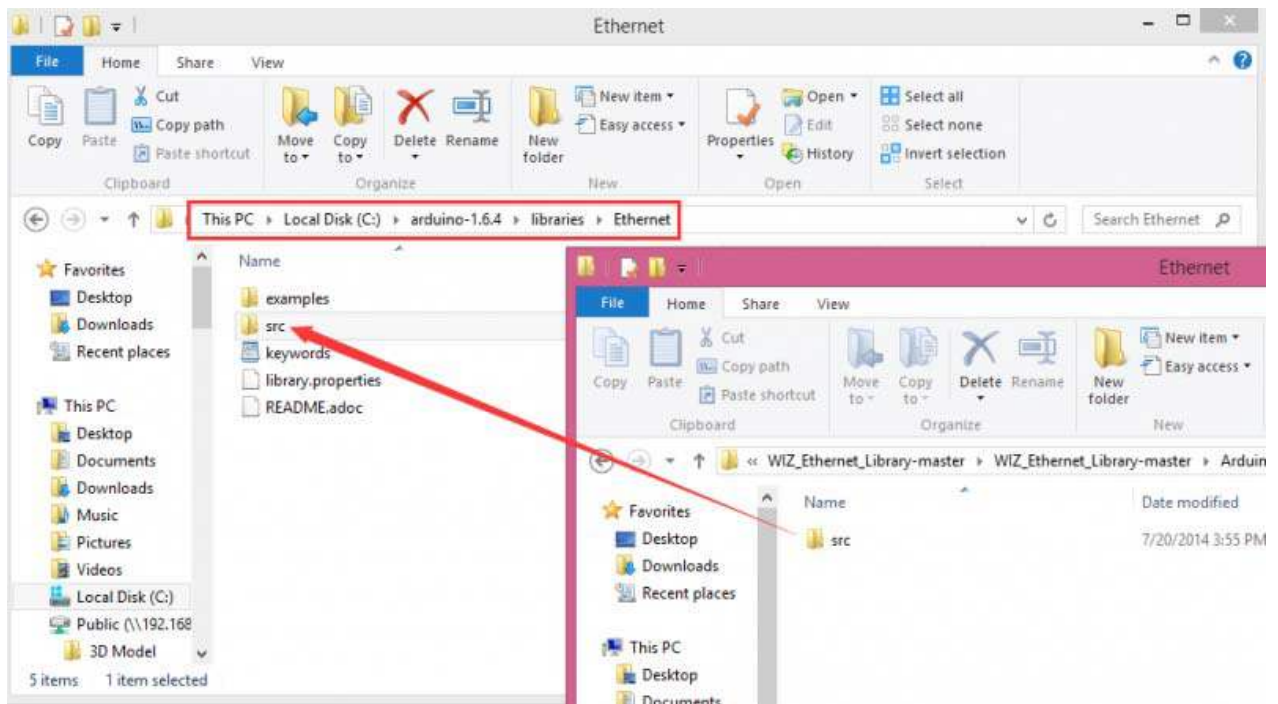
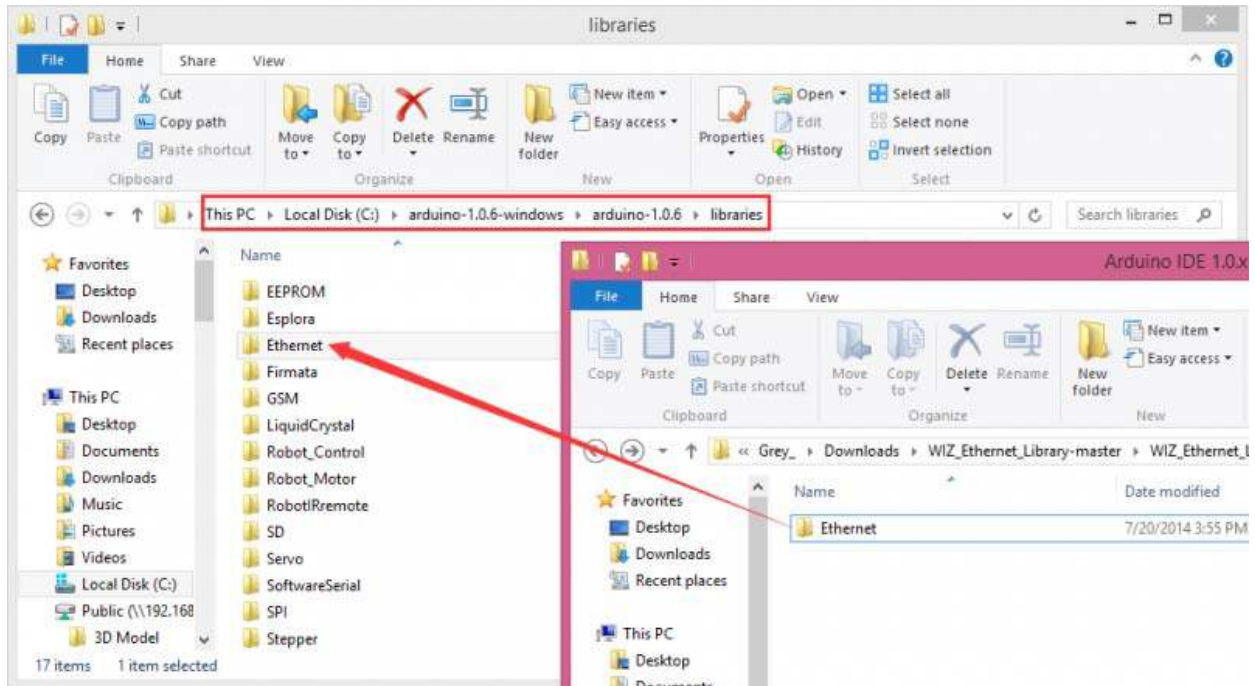
Step 1: Connections

Connect W5500 Reset pins: Connect A-RST pin to D11. (Default: Connected)



Step 2: Library

1. Download the W5500 Ethernet library [here](https://github.com/Wiznet/WIZ_Ethernet_Library) https://github.com/Wiznet/WIZ_Ethernet_Library
2. Replace the existing Ethernet library according to your Arduino IDE version:



NOTE: Good news! You can use arduino IDE v1.7 from [Arduino.org](http://www.arduino.org) which has "Ethernet 2" library, which works with this board. It means you don't have to download any modded libraries. Thank for the Vladimir Akopyan comments. Welcome share your projects and comments on the Disqus.

<http://www.arduino.org/downloads>

Step 3: Pin Definitions

Note: These parts should be declared at the beginning of the sketch.

1. Define W5500 SPI "SS" pin and "Reset" Pin:

```
#define SS      10U      //D10----- SS
#define RST     11U      //D11----- Reset
```

2. Setup function

```
void setup() {
  pinMode(SS, OUTPUT);
  pinMode(RST, OUTPUT);
  digitalWrite(SS, LOW);
  digitalWrite(RST, HIGH); //Reset
  delay(200);
  digitalWrite(RST, LOW);
  delay(200);
  digitalWrite(RST, HIGH);
  delay(200); //Wait W5500
}
```

Example

Open Arduino IDE, Select Boards -->Arduino Leonardo and COM port

```
/* Web Server
```

```
A simple web server that shows the value of the analog input pins.
using an Arduino Wiznet Ethernet shield.
```

Circuit:

- * Ethernet shield attached to pins 10, 11, 12, 13
- * Analog inputs attached to pins A0 through A5 (optional)

created 18 Dec 2009

by David A. Mellis

modified 9 Apr 2012

by Tom Igoe

*/

```
#include <SPI.h>
```

```
#include <Ethernet.h>
```

```
#define SS      10U    //D10 ---- SS
```

```
#define RST     11U    //D11 -----Reset
```

```
// Enter a MAC address and IP address for your controller below.
```

```
// The IP address will be dependent on your local network:
```

```
byte mac[] = {
```

```
  0xDE, 0xAD, 0xBE, 0xEF, 0xFE, 0xED
```

```
};
```

```
IPAddress ip(192, 168, 1, 177);
```

```
// Initialize the Ethernet server library
```

```
// with the IP address and port you want to use
```

```
// (port 80 is default for HTTP):
```

```
EthernetServer server(80);
```

```
void setup() {
```

```
  pinMode(SS, OUTPUT);
```

```
  pinMode(RST, OUTPUT);
```

```

digitalWrite(SS, LOW);
digitalWrite(RST, HIGH); //Reset
delay(200);
digitalWrite(RST, LOW);
delay(200);
digitalWrite(RST, HIGH);
delay(200);          //Wait W5500
//Open serial communications and wait for port to open :
Serial.begin(9600);
//while (!Serial) {
// ; // wait for serial port to connect. Needed for Leonardo only
//}
delay(1000);
// start the Ethernet connection and the server:
Ethernet.begin(mac, ip);
server.begin();
//Serial.print("server is at ");
//Serial.println(Ethernet.localIP());
}

void loop() {
  // listen for incoming clients
  EthernetClient client = server.available();
  if (client) {
    //Serial.println("new client");
    // an http request ends with a blank line
    boolean currentLineIsBlank = true;
    while (client.connected()) {
      if (client.available()) {
        char c = client.read();
        Serial.write(c);

        // if you've gotten to the end of the line (received a newline
        // character) and the line is blank, the http request has ended,
        // so you can send a reply

```

```

if (c == '\n' && currentLineIsBlank) {
    // send a standard http response header
    client.println("HTTP/1.1 200 OK");
    client.println("Content-Type: text/html");

    // the connection will be closed after completion of the response
    client.println("Connection: close");
    client.println("Refresh: 5"); // refresh the page automatically ev
ery 5 sec
    client.println();
    client.println("<!DOCTYPE HTML>");
    client.println("<html>");
    // output the value of each analog input pin
    for (int analogChannel = 0; analogChannel < 6; analogChannel++) {
        int sensorReading = analogRead(analogChannel);
        client.print("analog input ");
        client.print(analogChannel);
        client.print(" is ");
        client.print(sensorReading);
        client.println("<br />");
    }
    client.println("</html>");
    break;
}
if (c == '\n') {
    // you're starting a new line
    currentLineIsBlank = true;
}
else if (c != '\r') {
    // you've gotten a character on the current line
    currentLineIsBlank = false;
}
}
}

```



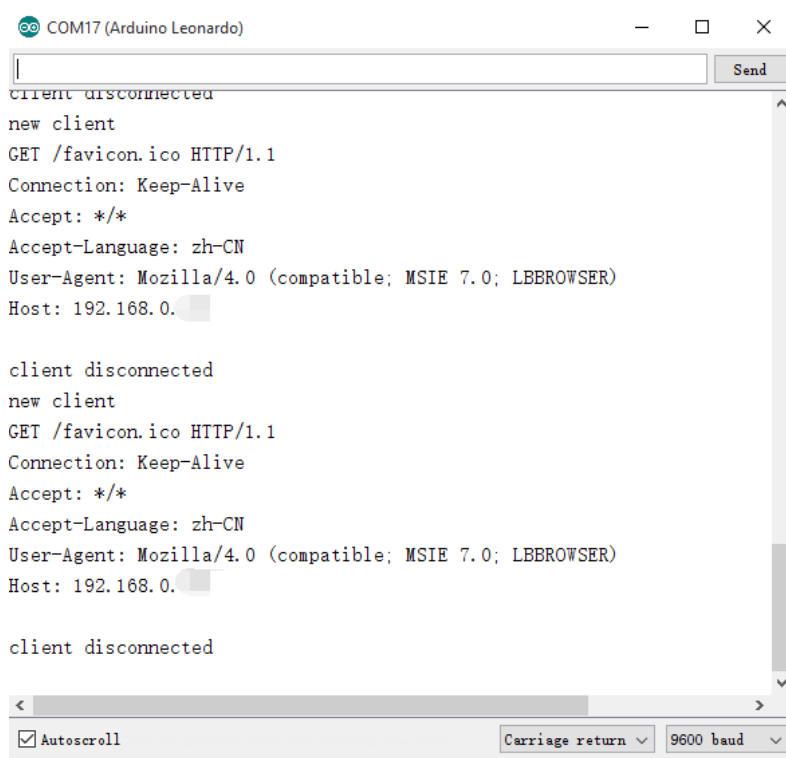
```
// give the web browser time to receive the data
delay(1);

// close the connection:
client.stop();

//Serial.println("client disconnected");
}
}
```

Check that it works

Open the Arduino Serial Monitor to initialize the setup and you will see some information about the connection processing. Open your browser, input the IP address and you should get see data of virtual analog pins:



The screenshot shows the Arduino Serial Monitor window titled "COM17 (Arduino Leonardo)". The window contains a text area with the following output:

```
client disconnected
new client
GET /favicon.ico HTTP/1.1
Connection: Keep-Alive
Accept: */*
Accept-Language: zh-CN
User-Agent: Mozilla/4.0 (compatible; MSIE 7.0; LBBROWSER)
Host: 192.168.0.

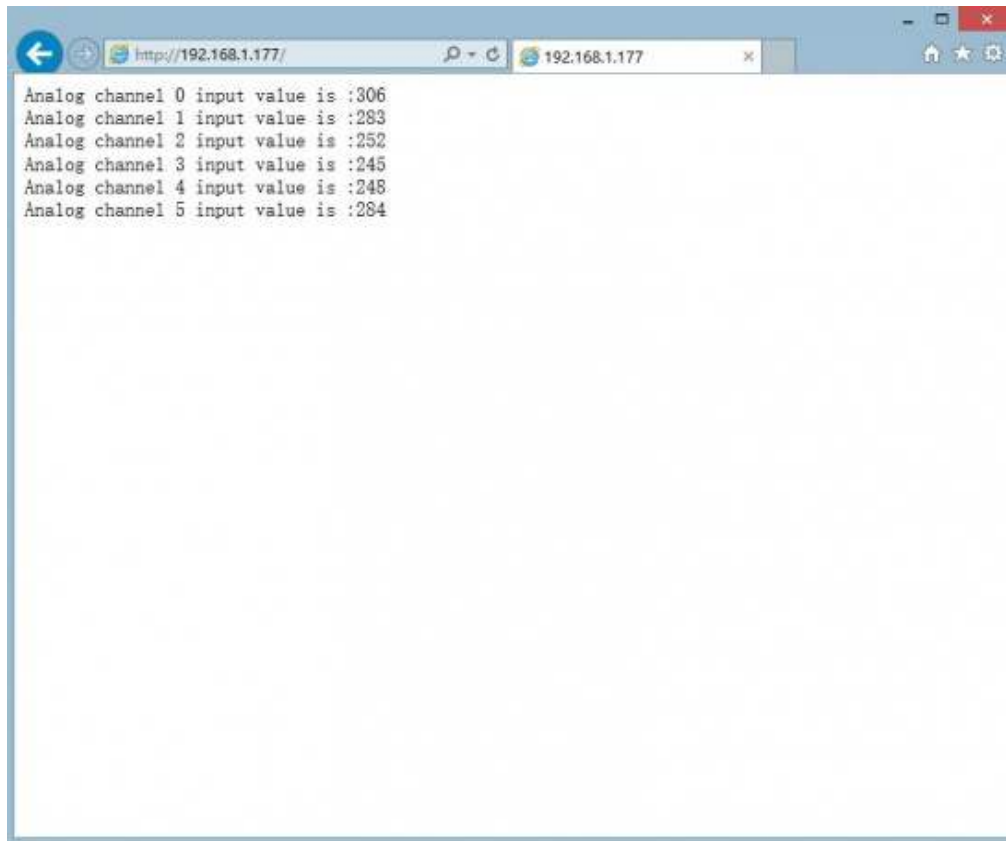
client disconnected
new client
GET /favicon.ico HTTP/1.1
Connection: Keep-Alive
Accept: */*
Accept-Language: zh-CN
User-Agent: Mozilla/4.0 (compatible; MSIE 7.0; LBBROWSER)
Host: 192.168.0.

client disconnected
```

At the bottom of the window, there is a control bar with the following options:

- Autoscroll
- Carriage return
- 9600 baud

Open the Serial Monitor first



W5500 Ethernet webserver

NOTE: If you want to skip the serial monitor step, you can comment out the lines waiting for **!serial**, and add a line: `delay(2000);` to ensure that initialization has finished.

```
Serial.begin(9600);  
delay(2000);  
// while (!Serial) {  
//   ; // wait for serial port to connect. Needed for Leonardo only  
  
// }
```

POE Power Supply

This board supports POE power supply, so it doesn't need any other power source if you use an active ethernet connection. For more information please check: POE (Power Over Ethernet)Wikipedia https://en.wikipedia.org/wiki/Power_over_Ethernet

For any question/advice/cool idea to share, please visit [DFRobot Forum](#).