

PRODUCT NUMBER
20020012-XXXXXXLF

20020012- □ □ □ □ □ 0 □ L F

PITCH
C: 3.50mm
D: 3.81mm
G: 5.00mm
H: 5.08mm

POLES
02: 2 POLES
03: 3 POLES
04: 4 POLES
...
24: 24 POLES

LF : DENOTED RoHS COMPATIBLE
1 : STANDARD PRODUCT
W/ BOX PACKING

SCREW CODE

CODE	SCREW TYPE	AVAILABILITY
A	-/+	ON REQUEST ONLY
B	-	STANDARD

ALL FLANGE SCREWS ARE ONLY AVAILABLE IN +/- COMBINATION SCREW TYPES.

PROPERTY TABLE						
FCI SERIES NAME		03-350	03-381	03-500	03-508	
PITCH (mm)		3.50	3.81	5.00	5.08	
VOLTAGE RATING (VAC)		300	300	300	300	
CURRENT RATING (A)		10	10	10	10	
APPLICABLE WIRE RANGE (AWG)		1-WIRE 16~28 2-WIRE 20	16~28 20	12~22 18	12~22 18	
WIRE CROSS SECTION (mm ²)	SOLID	1-WIRE	1.5	1.5	2.5	2.5
		2-WIRE	0.5	0.5	1.0	1.0
	STRANDED	1-WIRE	1.5	1.5	2.5	2.5
		2-WIRE	0.75	0.75	1.5	1.5
OPENING CONTACT HOUSING(mm ²)		1.8x2.4	1.8x2.4	2.6x2.8	2.6x2.8	
WIRE STRIP LENGTH(mm)		6~7	6~7	6~7	6~7	
TORQUE +/- 10% (N-m/Lb-in)		0.19/1.7	0.19/1.7	0.4/3.5	0.4/3.5	
SCREW		M2x0.4	M2x0.4	M2.5x0.4	M2.5x0.4	
WITHSTANDING VOLTAGE (kV)		1.6	1.6	1.6	1.6	
OPERATING TEMP. (°C)		-40~+115	-40~+115	-40~+115	-40~+115	
POLES AVAILABLE		02~24	02~24	02~24	02~24	
SAFETY CERTIFICATE						

HOUSING CODE

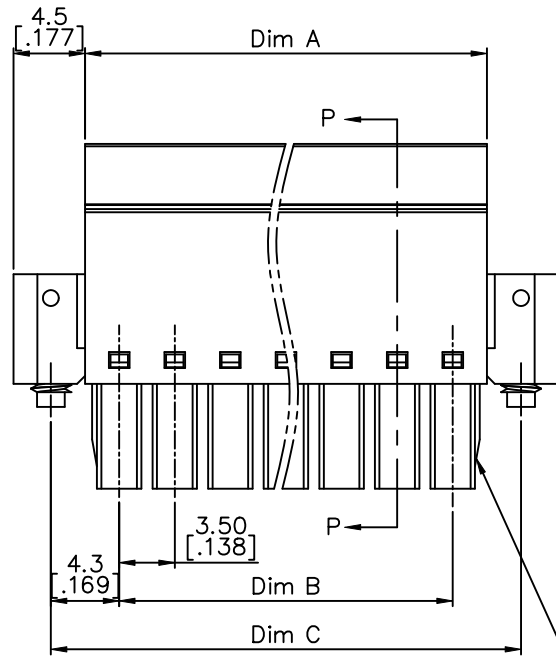
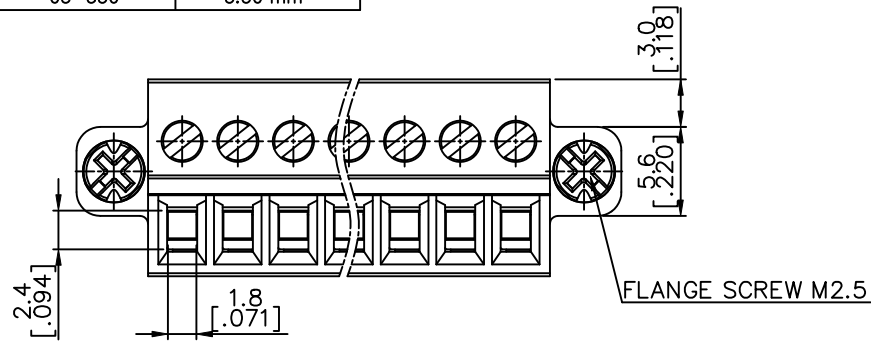
CODE	COLOR	AVAILABILITY
1	GREEN(RAL 6018/T)	STANDARD
2	BLACK	ON REQUEST ONLY
3	GREY(RAL 7004/P)	ON REQUEST ONLY
4	BLUE(RAL 5015/A)	ON REQUEST ONLY

NOTES:

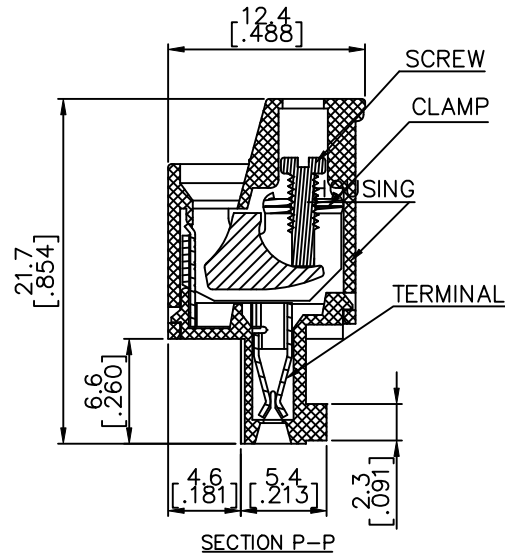
- MATERIALS
1-1 HOUSING: THERMALPLASTIC RESIN, UL 94V-0 RATED.
1-2 SCREW: STEEL, ZINC PLATED.
1-3 CLAMP: COPPER ALLOY, NICKEL PLATED.
1-4 TERMINAL: COPPER ALLOY, TIN PLATED.
- PRODUCT SPECIFICATION REFER TO FCI GS-12-625.
- PRODUCT PACKING SPECIFICATION REFER TO FCI GS-14-1394.
- FCI, SAFETY CERTIFICATE LOGO AND SERIES NAME TO BE SHOWN ON PRODUCT SURFACE.
- THE PRODUCTS WHERE THE PART NUMBER END IN "LF" MEET THE EUROPEAN UNION DIRECTIVE AND OTHER COUNTRY REGULATIONS AS DESCRIBED IN GS-22-008.

mat'l. code		surface ASME Y14.5	tolerance ASME Y14.5	projection	product family									
		tolerances unless otherwise specified			TERMINAL BLOCK									
ltr	ecn no	dr	date	angles	title									
A	T10-0082	WL	080810	X.±0.5	TERMINAL BLOCK PLUGGABLE, PLUG, SIGNAL, W/FLANGE FRONT SCREW									
B	T10-0158	WL	100410	X.X±0.3										
C	T10-0180	WL	111510	X'±1"		X.XX±0.1								
D	T10-0186	WL	120810	dr		WENDY CHEN 051810								
E	T11-0008	WL	012611	enr		JASON HSU 051810								
F	T-005908	WL	091311	chr		GARY HSIEH 051810								
				appd	JOSEPH HSIA 051810									
sheet index	revision sheet	F 1	F 2	F 3	F 4	F 5	scale	MM [INCH]	FCI	dwg no	20020012	sheet 1 of 5	size	A4
										type	CUSTOMER Drawing			

PRODUCT NUMBER	SERIES NAME	PITCH
20020012-CXXXXXLf	03-350	3.50 mm



2p to 6p with wedge, above 7p
without wedge(including 7p)



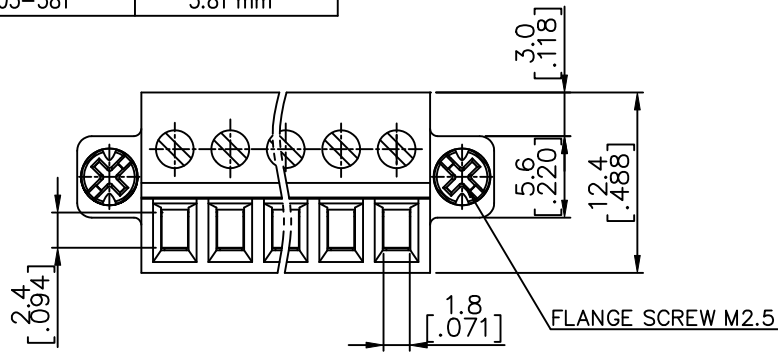
N = Number of poles
 Dim A = $N \times 3.5 [.138] + 0.80 [.031]$
 Dim B = $(N-1) \times 3.5 [.138]$
 Dim C = $(N-1) \times 3.5 [.138] + 8.6 [.339]$

Poles	Dim A	Dim B	Dim C
2-4p	$\pm 0.10 [.004]$	$\pm 0.15 [.006]$	
5-7p	$\pm 0.15 [.006]$	$\pm 0.20 [.008]$	
8-12p	$\pm 0.20 [.008]$	$\pm 0.25 [.010]$	
13-18p	$\pm 0.25 [.010]$	$\pm 0.30 [.012]$	
19-24p	$\pm 0.30 [.012]$	$\pm 0.40 [.016]$	

mat'l. code	surface ASME Y14.5	tolerance ASME Y14.5	projection 	product family TERMINAL BLOCK
ltr	ecn no	dr	date	title
F				TERMINAL BLOCK PLUGGABLE, PLUG, SIGNAL, W/FLANGE FRONT SCREW
	angles	tolerances unless otherwise specified	scale	MM INCH
	X°±1'	X.X±0.3		sheet 2 of 5 size
		X.XX±0.1		20020012
	dr	WENDY CHEN	051810	A4
	enr	JASON HSU	051810	
	chr	GARY HSIEH	051810	
	appd	JOSEPH HSIA	051810	
sheet index	revision sheet			type CUSTOMER Drawing

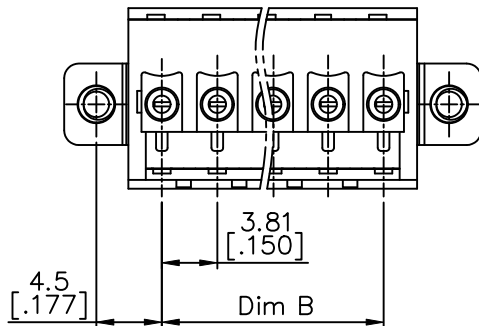
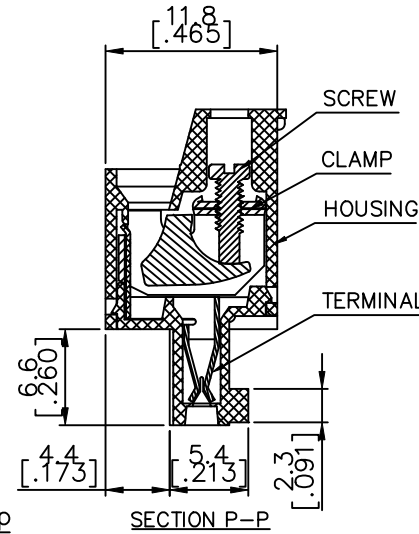
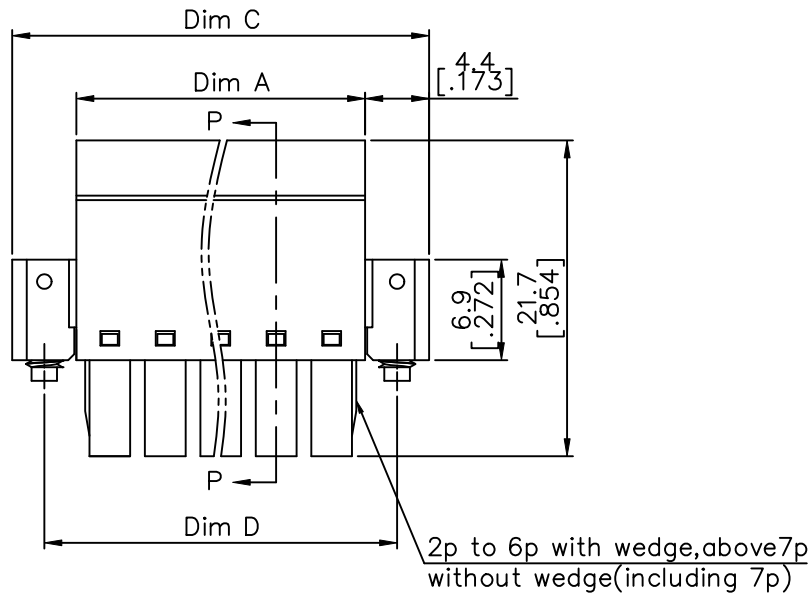


PRODUCT NUMBER	SERIES NAME	PITCH
20020012-DXXXXXLf	03-381	3.81 mm



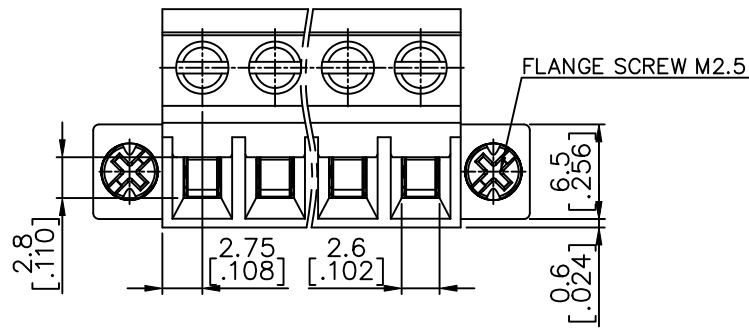
N = Number of poles
 Dim A = $N \times 3.81 [.150] + 0.80 [.031]$
 Dim B = $(N-1) \times 3.81 [.150]$
 Dim C = $N \times 3.81 [.150] + 9.6 [.378]$
 Dim D = $(N-1) \times 3.81 [.150] + 9.0 [.354]$

Poles	Tolerance
2-6p	±0.15 [.006]
7-11p	±0.20 [.008]
12-17p	±0.25 [.010]
18-24p	±0.30 [.012]



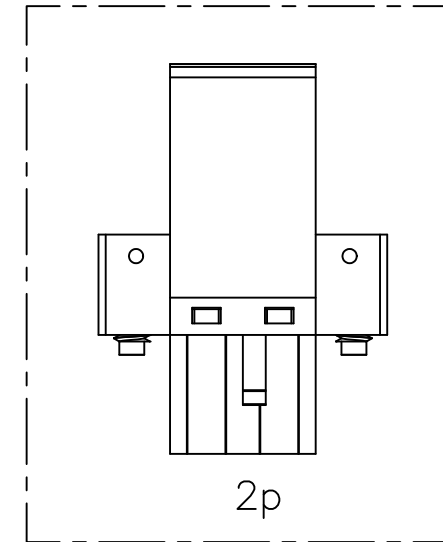
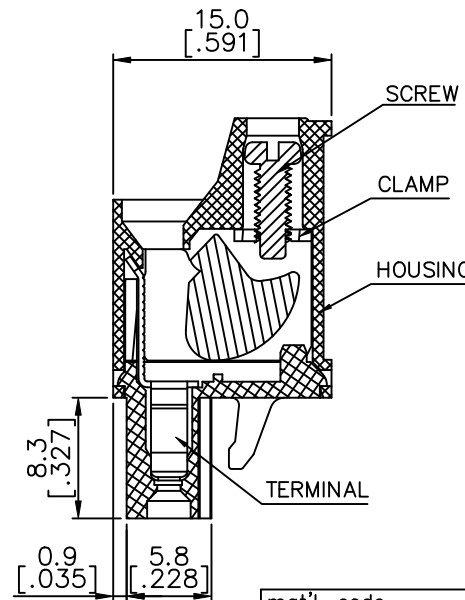
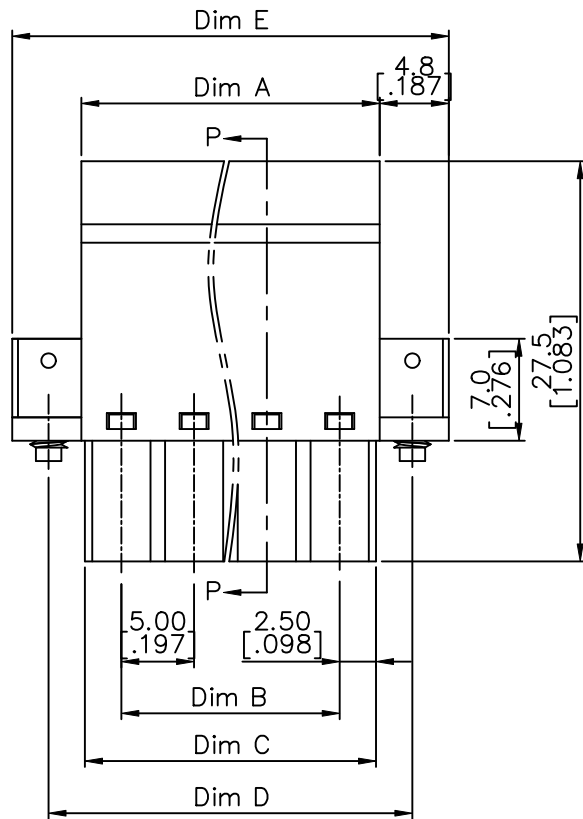
mat'l. code	surface ASME Y14.5 ✓	tolerance ASME Y14.5	projection [Symbol]	product family TERMINAL BLOCK
ltr	ecn no	dr	date	title
F				TERMINAL BLOCK PLUGGABLE, PLUG, SIGNAL, W/FLANGE FRONT SCREW
	angles	lineal	scale	dwg no
	X°±1'	X.X±0.3	MM [INCH]	sheet 3 of 5 size
		X.XX±0.1		20020012
	dr	WENDY CHEN	051810	A4
	enr	JASON HSU	051810	
	chr	GARY HSIEH	051810	
	appd	JOSEPH HSIA	051810	
sheet index	revision sheet			type CUSTOMER Drawing

PRODUCT NUMBER	SERIES NAME	PITCH
20020012-GXXXXXL	03-500	5.00 mm



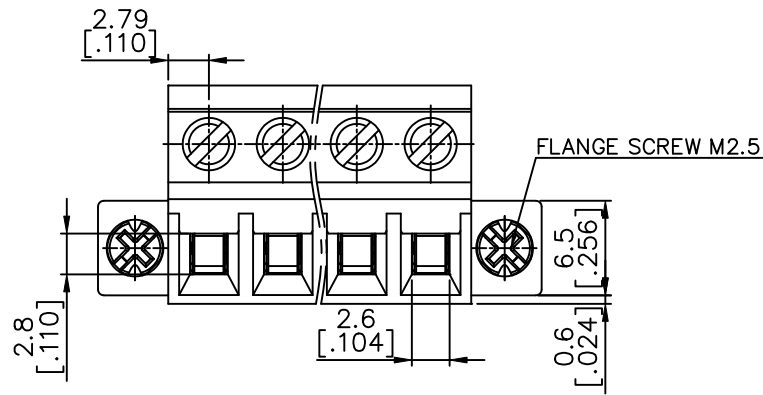
N = Number of poles
 Dim A = $N \times 5.0 [.197] + 0.5 [.020]$
 Dim B = $(N-1) \times 5.0 [.197]$
 Dim C = $N \times 5.0 [.197]$
 Dim D = $(N+1) \times 5.0 [.197]$
 Dim E = $(N+2) \times 5.0 [.197]$

Poles	Tolerance
2-7p	$\pm 0.15 [.006]$
8-12p	$\pm 0.25 [.010]$
13-18p	$\pm 0.30 [.012]$
19-24p	$\pm 0.40 [.016]$



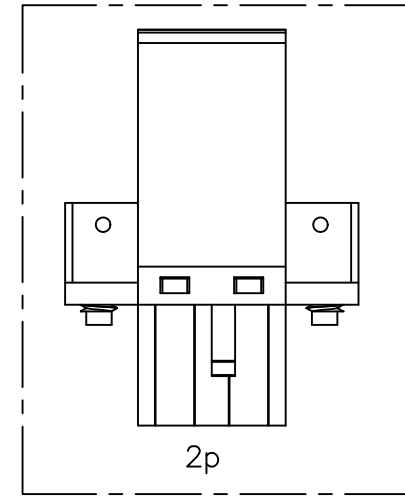
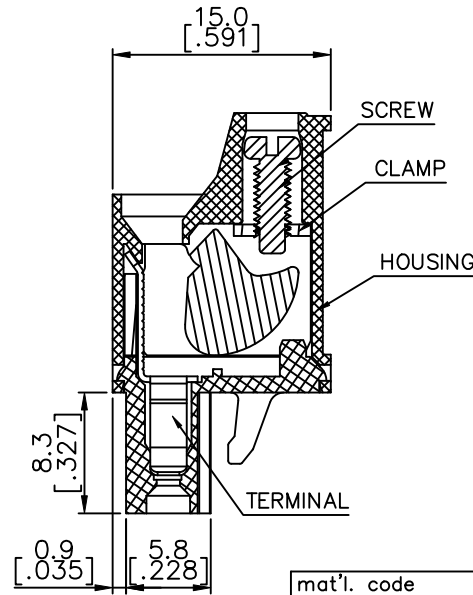
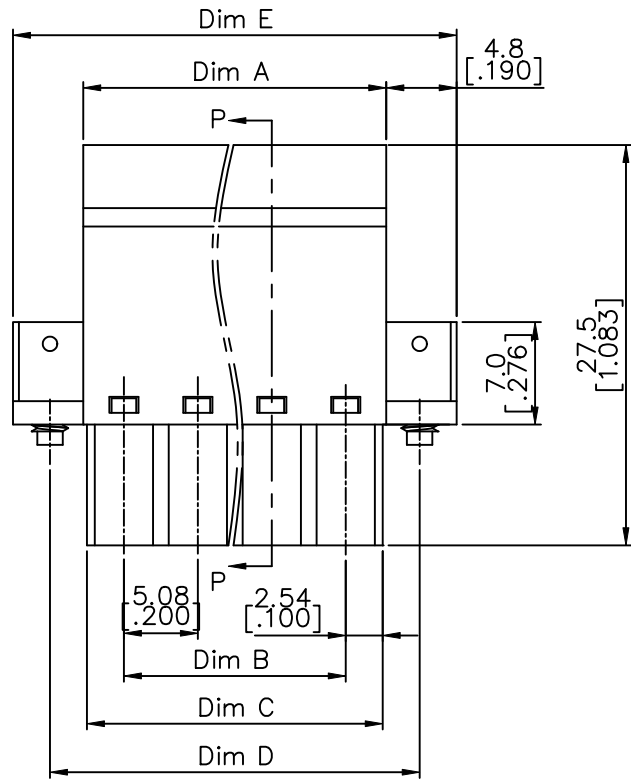
mat'l. code		surface ASME Y14.5	tolerance ASME Y14.5	projection	product family TERMINAL BLOCK
ltr		ecn no dr date			title
F		tolerances unless otherwise specified			TERMINAL BLOCK PLUGGABLE, PLUG, SIGNAL, W/FLANGE FRONT SCREW
		angles	linear	MM [INCH]	sheet 4 of 5 size
		X°±1'	X.XX±0.1	scale	20020012 A4
		dr	WENDY CHEN	051810	FCI type CUSTOMER Drawing
		enr	JASON HSU	051810	
		chr	GARY HSIEH	051810	
		appd	JOSEPH HSIA	051810	
sheet index	revision sheet				

PRODUCT NUMBER	SERIES NAME	PITCH
20020012-HXXXXXL	03-508	5.08 mm



N = Number of poles
 Dim A = $N \times 5.08 [.200] + 0.50 [.020]$
 Dim B = $(N - 1) \times 5.08 [.200]$
 Dim C = $N \times 5.08 [.200]$
 Dim D = $(N + 1) \times 5.08 [.200]$
 Dim E = $(N + 2) \times 5.08 [.200]$

Poles	Tolerance
2-6p	$\pm 0.15 [.006]$
7-12p	$\pm 0.25 [.010]$
13-18p	$\pm 0.30 [.012]$
19-24p	$\pm 0.40 [.016]$



SECTION P-P

mat'l. code		surface ASME Y14.5	tolerance ASME Y14.5	projection 	product family TERMINAL BLOCK
ltr		ecn no dr date			title
F		tolerances unless otherwise specified			TERMINAL BLOCK PLUGGABLE, PLUG, SIGNAL, W/FLANGE FRONT SCREW
		angles X°±1'	linear X.X±0.3	MM [INCH]	sheet 5 of 5 size
		scale			20020012
		dr WENDY CHEN 051810			A4
		enr JASON HSU 051810	type		CUSTOMER Drawing
		chr GARY HSIEH 051810			
		appd JOSEPH HSIA 051810			
sheet index	revision sheet				