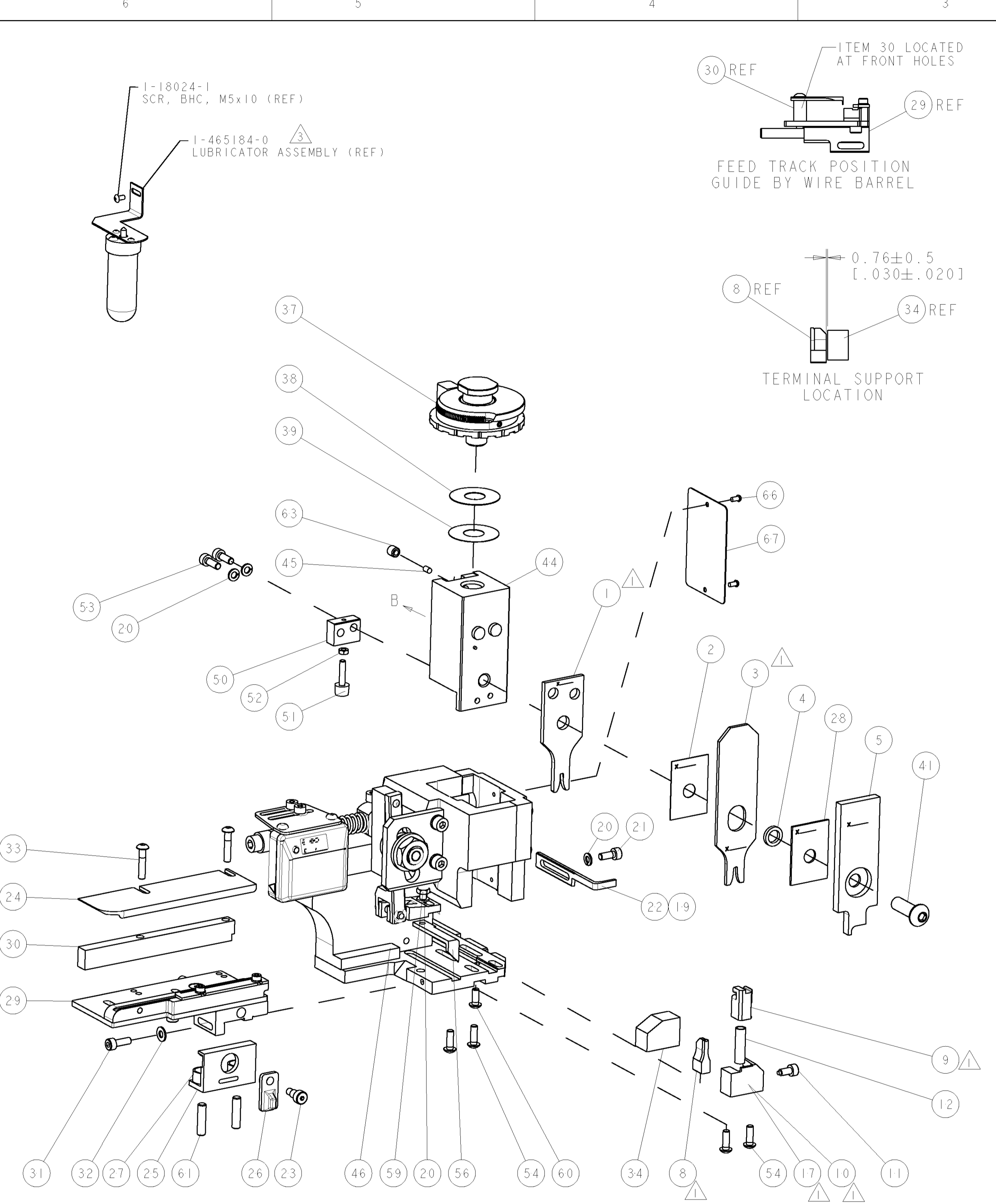
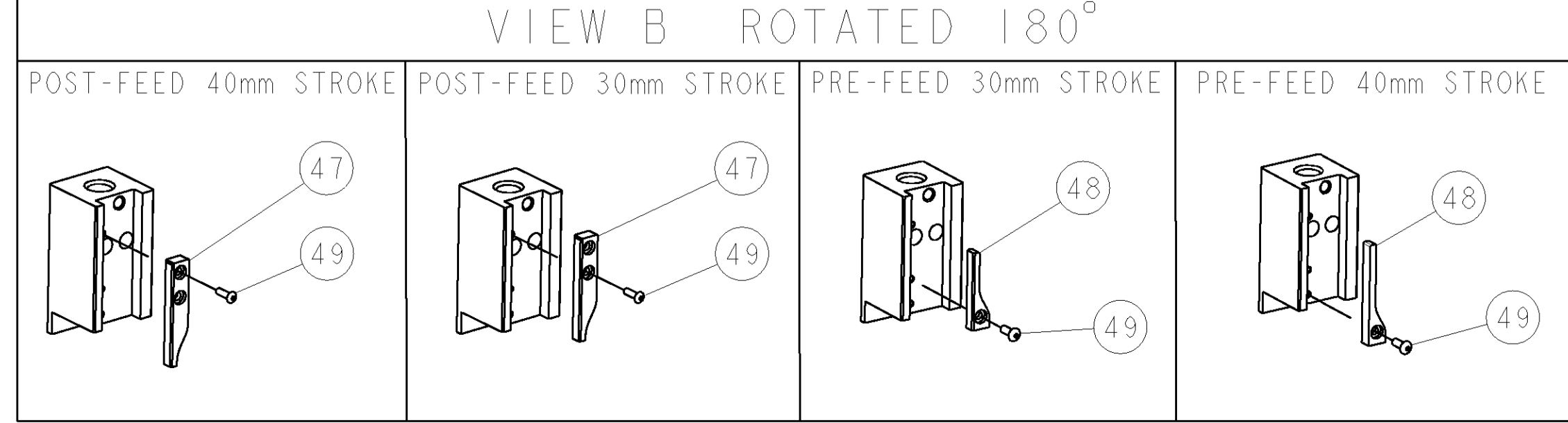


PART NUMBER	REV	TERMINATOR	FEED TYPE	DESCRIPTION
1528742-1	A	LEADMAKER	MECH POST FEED	CUTS CARRIER
1528742-2	A	BENCH	MECH PRE FEED	CUTS CARRIER
1528742-6	A	LEADMAKER	MECH POST FEED	CONTINUOUS CARRIER
7-1528742-1	A	LEADMAKER	MECH POST FEED	-1 AND SPARE PARTS
7-1528742-2	A	BENCH	MECH PRE FEED	-2 AND SPARE PARTS
7-1528742-6	A	LEADMAKER	MECH POST FEED	-6 AND SPARE PARTS
7-1528742-7	A	-	-	SPARE PARTS KIT

CRIMP DATA		FCI TERMINAL		FCI CRIMP SPECS	
TERMINAL NAME: DCK 2.8mm FEMALE TERMINAL					
CRIMP	SIZE	TYPE	RANGE		
WIRE	2.03 [1.080 IN]	F	0.50-1.00mm <sup>2</sup>		
INSUL	2.79 [1.110 IN]	OV	1.40-2.10 [1.055-1.083 IN]		
WIRE STRIP LENGTH 3.90-4.50 [1.54-1.77 IN]		APPL INSTRUCTIONS 408-8322 & 408-8490			
TERMINAL APPL SPEC	FCI APPL DRG	FEED			
9 084 13 00	6	12.00 [1.472 IN]			
TERMINALS APPLIED					
TYCO TERM PN	MANUF TERM PN				
1949207-1	6 001 36 31				
WIRE SIZE	CRIMP HEIGHT	REF SETTING			
1.00mm <sup>2</sup>	1.35 ± 0.05 [1.053 ± .002 IN]	C7			
0.75mm <sup>2</sup>	1.27 ± 0.05 [1.050 ± .002 IN]	D4			
0.50mm <sup>2</sup>	1.20 ± 0.05 [1.047 ± .002 IN]	D9			

- △ RECOMMENDED SPARE PARTS.
- 2. GREASE RAM, CAM, CAM FOLLOWER AND FEED ROD LIGHTLY.
- △ CERTAIN TERMINALS REQUIRE LUBRICATION. REFER TO THE APPLICATOR INSTRUCTION SHEET FOR MORE INFORMATION.
- 4. LUBRICATE DAILY PER THE APPLICATOR INSTRUCTION SHEET SUPPLIED WITH THE APPLICATOR.
- △ ALL CRIMP DATA SUPPLIED BY THE TERMINAL MANUFACTURER.
- △ INSULATION CRIMP HEIGHTS NOT RECOMMENDED FOR USE BY TYCO ELECTRONICS UK LTD.

\* WARNING  
ON INSTALLATION, SET WIRE DISC TO LARGEST WIRE SIZE SETTING. USE OF SETTINGS BELOW MIN. REQUIRED CRIMP HEIGHT SETTING WILL CAUSE DAMAGE TO CRIMP TOOLING.



LOC	DIST	REV	DESCRIPTION	DATE	BY	APPV
A	66		SEE ECO-06-030016	22DEC2006	DP	MC

QTY	UNIT	DESCRIPTION	ITEM NO
-	-	-	73
-	-	-	72
-	-	-	71
-	-	-	70
-	-	-	69
-	-	-	68
-	-	-	67
-	-	-	66
-	-	-	65
-	-	-	64
-	-	-	63
-	-	-	62
-	-	-	61
-	-	-	60
-	-	-	59
-	-	-	58
-	-	-	57
-	-	-	56
-	-	-	55
-	-	-	54
-	-	-	53
-	-	-	52
-	-	-	51
-	-	-	50
-	-	-	49
-	-	-	48
-	-	-	47
-	-	-	46
-	-	-	45
-	-	-	44
-	-	-	43
-	-	-	42
-	-	-	41
-	-	-	40
-	-	-	39
-	-	-	38
-	-	-	37
-	-	-	36
-	-	-	35
-	-	-	34
-	-	-	33
-	-	-	32
-	-	-	31
-	-	-	30
-	-	-	29
-	-	-	28
-	-	-	27
-	-	-	26
-	-	-	25
-	-	-	24
-	-	-	23
-	-	-	22
-	-	-	21
-	-	-	20
-	-	-	19
-	-	-	18
-	-	-	17
-	-	-	16
-	-	-	15
-	-	-	14
-	-	-	13
-	-	-	12
-	-	-	11
-	-	-	10
-	-	-	9
-	-	-	8
-	-	-	7
-	-	-	6
-	-	-	5
-	-	-	4
-	-	-	3
-	-	-	2
-	-	-	1

QTY	UNIT	DESCRIPTION	ITEM NO
-	-	-	84
-	-	-	83
-	-	-	82
-	-	-	81
-	-	-	80
-	-	-	79
-	-	-	78
-	-	-	77
-	-	-	76
-	-	-	75
-	-	-	74
-77 -76 -72 -71 -6 -2 -1	PART NO	DESCRIPTION	ITEM NO

DIMENSIONS: mm [IN]		TOLERANCES UNLESS OTHERWISE SPECIFIED: 0 PLC ± 1 PLC ± 2 PLC ± 3 PLC ± 4 PLC ± ANGLES ±	
MATERIAL:		FINISH:	
WEIGHT:		CUSTOMER DRAWING:	
SCALE: 3:5		SHEET 1 OF 1	