

This document is the property of Amphenol Corporation and is delivered on the express condition that is not to be disclosed, reproduced or used, in whole or in part, for manufacture or sale by anyone other than Amphenol Corporation without its prior consent, and that no right is granted to disclose or to use any information in this document.

The marking on this product doesn't contain environmental hazardous materials per Material Specification SS-00259 for Sony GP compliant or per directive 2002/95/EC for RoHS compliant.

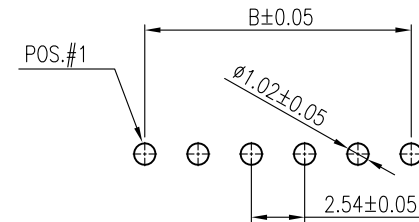
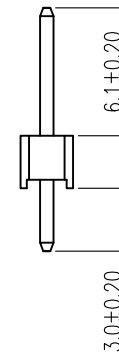
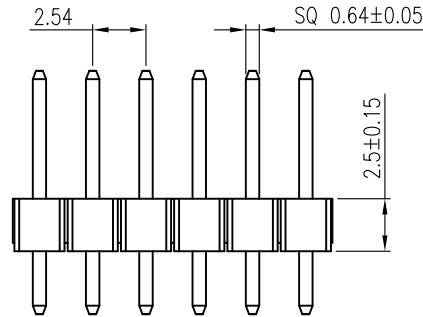
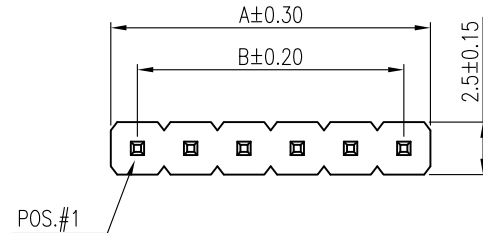


ORIGINAL



REVISIONS				
SYM	ECN No.	DESCRIPTION	DATE	APPROVED
A		RELEASE TO PRODUCTION	01/10/2005	Bodhi Chih
B	NE-12082	MODIFY DRAWING	09/06/2012	Roger Tsai

G800 W 268 XXX EU	1 x 40 = 40	101.60	99.06
G800 W 269 XXX EU	1 x 39 = 39	99.06	96.52
G800 W 270 XXX EU	1 x 38 = 38	96.52	93.98
G800 W 271 XXX EU	1 x 37 = 37	93.98	91.44
G800 W 272 XXX EU	1 x 36 = 36	91.44	88.90
G800 W 273 XXX EU	1 x 35 = 35	88.90	86.36
G800 W 274 XXX EU	1 x 34 = 34	86.36	83.82
G800 W 275 XXX EU	1 x 33 = 33	83.82	81.28
G800 W 276 XXX EU	1 x 32 = 32	81.28	78.74
G800 W 277 XXX EU	1 x 31 = 31	78.74	76.20
G800 W 278 XXX EU	1 x 30 = 30	76.20	73.66
G800 W 279 XXX EU	1 x 29 = 29	73.66	71.12
G800 W 280 XXX EU	1 x 28 = 28	71.12	68.58
G800 W 281 XXX EU	1 x 27 = 27	68.58	66.04
G800 W 282 XXX EU	1 x 26 = 26	66.04	63.50
G800 W 283 XXX EU	1 x 25 = 25	63.50	60.96
G800 W 284 XXX EU	1 x 24 = 24	60.96	58.42
G800 W 285 XXX EU	1 x 23 = 23	58.42	55.88
G800 W 286 XXX EU	1 x 22 = 22	55.88	53.34
G800 W 287 XXX EU	1 x 21 = 21	53.34	50.80
G800 W 288 XXX EU	1 x 20 = 20	50.80	48.26
G800 W 289 XXX EU	1 x 19 = 19	48.26	45.72
G800 W 290 XXX EU	1 x 18 = 18	45.72	43.18
G800 W 291 XXX EU	1 x 17 = 17	43.18	40.64
G800 W 292 XXX EU	1 x 16 = 16	40.64	38.10
G800 W 293 XXX EU	1 x 15 = 15	38.10	35.56
G800 W 294 XXX EU	1 x 14 = 14	35.56	33.02
G800 W 295 XXX EU	1 x 13 = 13	33.02	30.48
G800 W 296 XXX EU	1 x 12 = 12	30.48	27.94
G800 W 297 XXX EU	1 x 11 = 11	27.94	25.40
G800 W 298 XXX EU	1 x 10 = 10	25.40	22.86
G800 W 299 XXX EU	1 x 9 = 9	22.86	20.32
G800 W 300 XXX EU	1 x 8 = 8	20.32	17.78
G800 W 301 XXX EU	1 x 7 = 7	17.78	15.24
G800 W 302 XXX EU	1 x 6 = 6	15.24	12.70
G800 W 303 XXX EU	1 x 5 = 5	12.70	10.16
G800 W 304 XXX EU	1 x 4 = 4	10.16	7.62
G800 W 305 XXX EU	1 x 3 = 3	7.62	5.08
G800 W 306 XXX EU	1 x 2 = 2	5.08	2.54



RECOMMENDED PCB LAYOUT

NOTES:

- INSULATOR: NYLON-6T, UL 94V-0, COLOR- BLACK
- CONTACT: BRASS, SELECTIVE GOLD PLATED ON CONTACT AREA, G/F OR TIN PLATED ON SOLDERING AREA (LEAD FREE)
 "XXX"- PIN CONTACT PLATING
 "005"- 15μ" GOLD
 "010"- 30μ" GOLD
 "018"- FULL GOLD FLASH
 "025"- 5μ" GOLD
 "032"- FULL TIN
 UNDER NICKEL 50μ" THICKNESS PLATING OVERALL.
- THIS PRODUCT DOESN'T CONTAIN ENVIRONMENTAL HAZARDOUS MATERIALS PER DIRECTIVE 2002/95/EC FOR RoHS.
- CURRENT RATING: 3.0 Amps/contact MAX.

TOLERANCE		APPROVALS		DATE	TITLE		Amphenol®							
X.		DRAWN	Aqua Chou	09/06/2012	G800 SERIES SINGLE, D/R HEADER 2.54MM-PITCH STRAIGHT PCB MOUNT		Amphenol Corporation Amphenol Taiwan Corporation							
X.X	±0.30	CHECKED	Roger Tsai	09/06/2012										
X.XX	±0.20	APPROVED	Roger Tsai	09/06/2012										
X.XXX	±0.10						UNIT	mm	SIZE	A3	PART No.	G800WXXXXXEU		
ANGULAR	±1°						SCALE	NA	SHEET	1 OF 1	DWG No.	G800WXXXXXEU_1	REV.	B
UNLESS OTHERWISE SPECIFIED		DWG TYPE		CUST DWG	PROJECT CODE		HEAD							

This document is the property of Amphenol Corporation and is delivered on the express condition that is not to be disclosed, reproduced or used, in whole or in part, for manufacture or sale by anyone other than Amphenol Corporation without its prior consent, and that no right is granted to disclose or to use any information in this document.

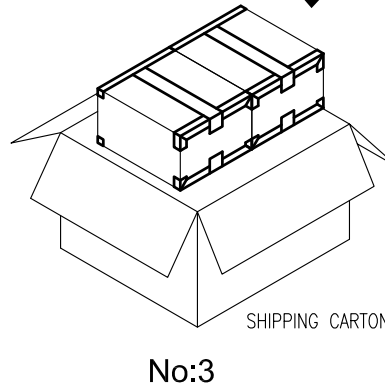
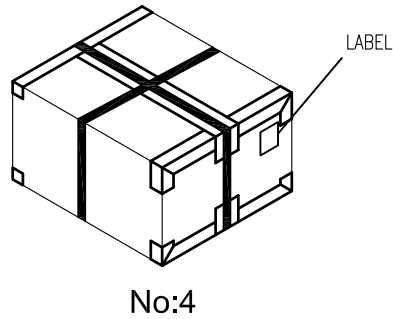
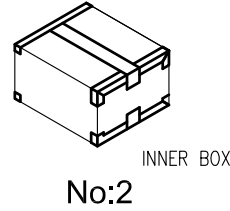
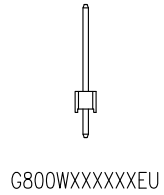
The marking on this product doesn't contain environmental hazardous materials per Material Specification SS-00259 for Sony GP compliant or per directive 2002/95/EC for RoHS compliant.



ORIGINAL



REVISIONS				
SYM	ECN No.	DESCRIPTION	DATE	APPROVED
A		RELEASE TO PRODUCTION	01/10/2005	Bodhi Chih
B	NE-12082	MODIFY DRAWING	09/06/2012	Roger Tsai



NOTES:

1. PE BAG SIZE : 195 X 265 mm
2. INNER BOX SIZE : 215 X 175 X 150 mm
3. SHIPPING CARTON SIZE : 370 X 230 X 175 mm

G800W 302 018EU	06	2000	5	2	20000	6.9	7.6
G800W 303 018EU	05	1000	10	2	20000	4.3	5.0
G800W 304 018EU	04	1000	10	2	20000	4.6	5.3
G800W 305 018EU	03	1000	20	2	40000	6.4	7.2
G800W 306 018EU	02	1000	25	2	50000	5.7	6.5
P/N	POS.	PCS/BAG	BAG/INNER BOX	INNER BOX/SHIPPING CARTON	QUANTITY (PCS)	N.W. KG	G.W. KG

TOLERANCE	APPROVALS	DATE	TITLE		Amphenol®		
X. ±0.30	DRAWN Aqua Chou	09/06/2012	G800 SERIES SINGLE, D/R HEADER 2.54MM-PITCH STRAIGHT PCB MOUNT		Amphenol Corporation Amphenol Taiwan Corporation		
X.X ±0.20	CHECKED Roger Tsai	09/06/2012					
X.XXX ±0.10	APPROVED Roger Tsai	09/06/2012					
ANGULAR ±1°	DWG TYPE CUST DWG	PROJECT CODE HEAD	UNIT mm	SIZE A3	PART No. G800WXXXXXEU		
UNLESS OTHERWISE SPECIFIED			SCALE NA	SHEET 1 OF 1	DWG No. G800WXXXXXEU_1		REV. B

