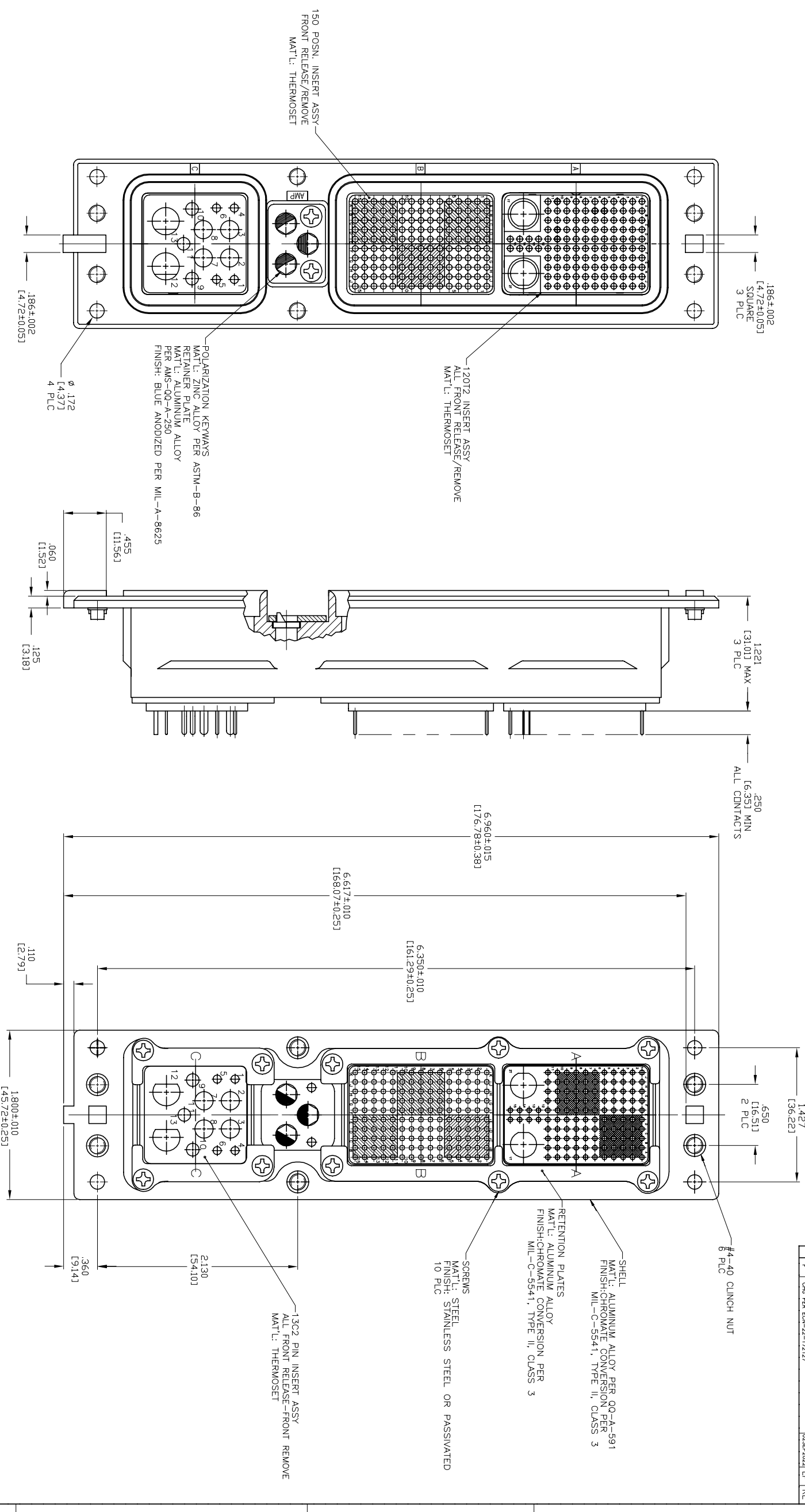


REV	DATE	BY	CHK	APP
1	02SEP2022	LP	RL	



1. CONNECTOR DIMENSIONS ARE PER ARINC 600 SPECIFICATION.
2. CONNECTOR IS SUPPLIED WITH CONTACTS PER TABLE ASSEMBLED AS SHOWN.
3. CONNECTOR IS SUPPLIED WITH A DUST COVER INSTALLED (NOT SHOWN).
4. CONTACTS NOT SHOWN IN FRONT & REAR VIEWS FOR CLARITY.

KEYING POSITION	MODULE A	MODULE B	MODULE C	PART NUMBER
12	211431-4 (SIZE 22 POSTED), QTY=118 448540-2 (SIZE 8 COAX POSTED), QTY=2 211431-4 (SIZE 22 POSTED), QTY=150 1-448138-5 (SIZE 20 POSTED), QTY=4 1-448139-1 (SIZE 16 POSTED), QTY=3 448140-3 (SIZE 12 POSTED), QTY=4 1484201-1 (SIZE 5 POSTED COAX), QTY=2			1757875-1

CONTACTS INCLUDED AND INSTALLED

THIS DRAWING IS A CONTROLLED DOCUMENT.

REVISIONS: 5-23-06, 5-23-06, 5-23-06

DESIGNER: K. THOMAS, K. HOGAN

DATE: 5-23-06

SCALE: 2:1

SHEET: 1 of 2

REV: F

RESTRICTED TO:

TE Connectivity

RECEPTACLE ASSY, SIZE 2, ARINC 600 (12012/150/1302)

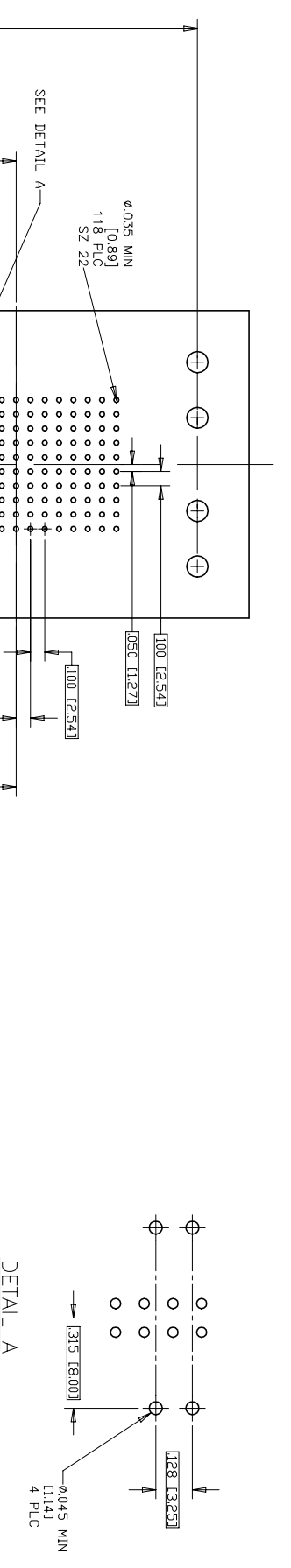
SIZE: 100779

SCALE: 2:1

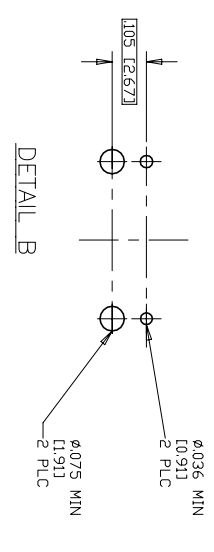
SHEET: 1 of 2

REV: F

REVISIONS			
P	LNK	DESCRIPTION	DATE
-	1	SEE SHEET 1	-



DETAIL A



DETAIL B

RECOMMENDED PCB LAYOUT

THIS DRAWING IS A CONTROLLED DOCUMENT.

DATE	5-23-06	BY	D.C. THOMAS
DESIGNED BY	K. HOGAN	DATE	5-23-06
CHECKED BY	D. HOGAN	DATE	5-23-06
APPROVED BY	D. HOGAN	DATE	5-23-06
DATE	5-23-06	BY	D.C. THOMAS
DRAWN BY	D. HOGAN	DATE	5-23-06
SCALE	2:1	SHEET	2 OF 2

STE TE Connectivity
 RECEIPTABLE ASSY SIZE 2.
 PART NO. ARING 600
 (1207/150/15C2)
 DATE CODE DDDMMYY
 0100779 © 1757875
 SCALE 2:1 SHEET 2 OF 2