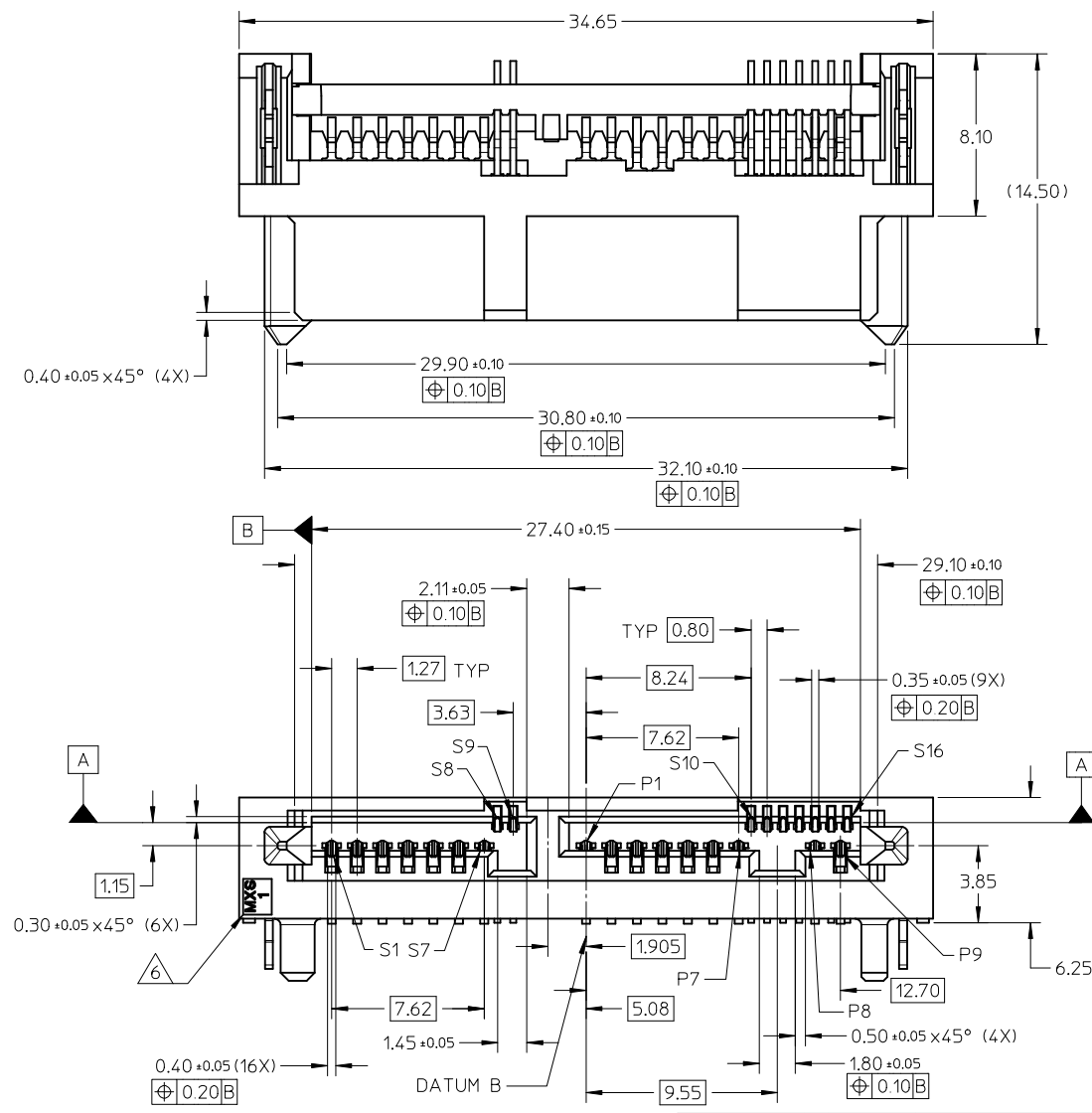
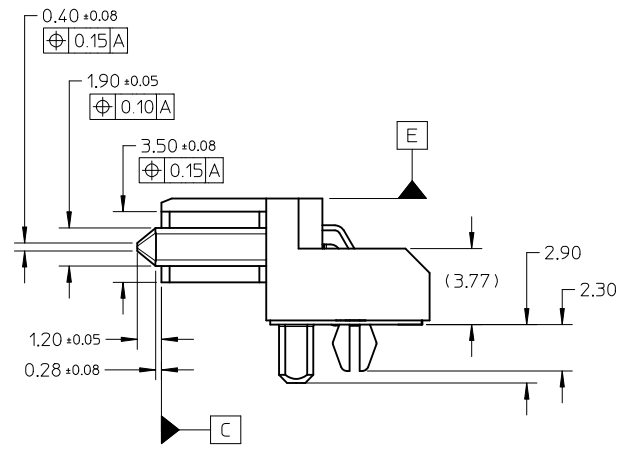


10 9 8 7 6 5 4 3 2 1

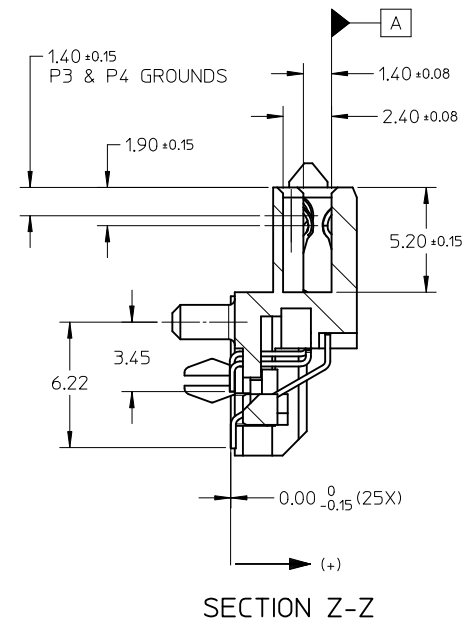
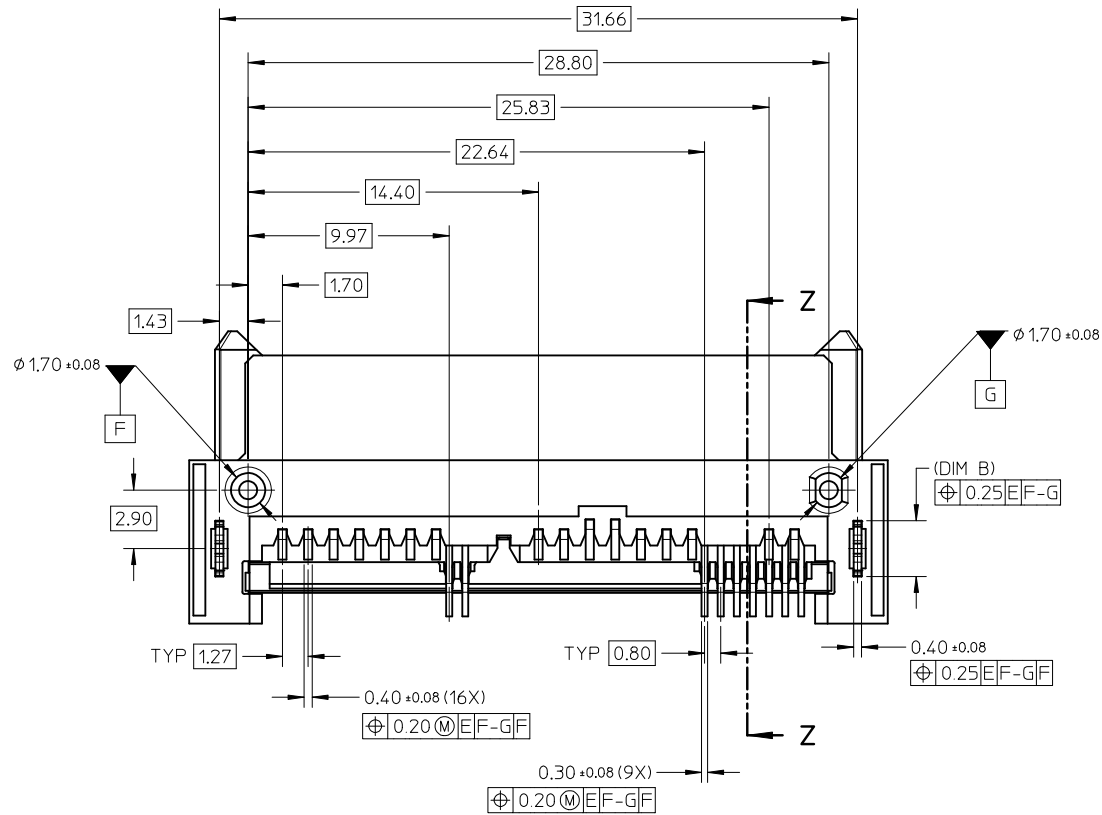


- NOTES:
- MATERIAL : LCP, GLASS FILLED, UL 94V-0, BLACK
TERMINAL/FORKLOCK : COPPER ALLOY
 - FINISHES :
TERMINAL : 0.76µm MIN. SELECTIVE GOLD OVER
1.27µm MIN. NICKEL UNDERPLATE
2.54µm MIN. TIN OVER
1.27µm MIN. NICKEL UNDERPLATE
FORKLOCK : 2.54µm MIN. TIN OVER
1.27µm MIN. NICKEL UNDERPLATE
 - PRODUCT SPECIFICATION PS-78395-001
 - PACKAGING SPECIFICATION : TRAY
 - MATES WITH : MOLEX MICRO SAS PLUG
 - MOLEX LOGO LOCATED APPROXIMATELY AS SHOWN
 - THIS PRODUCT IS COMPLIANT TO RoHS DIRECTIVE WITH THE FOLLOWING BANNED SUBSTANCES - LEAD, MERCURY, CADMIUM, HEXAVALENT CHROMIUM, POLYBROMINATED BIPHENYLS AND POLYBROMINATED DIPHENYLS ETHERS.
 - NON FUNCTIONAL CORING MAY VARY.

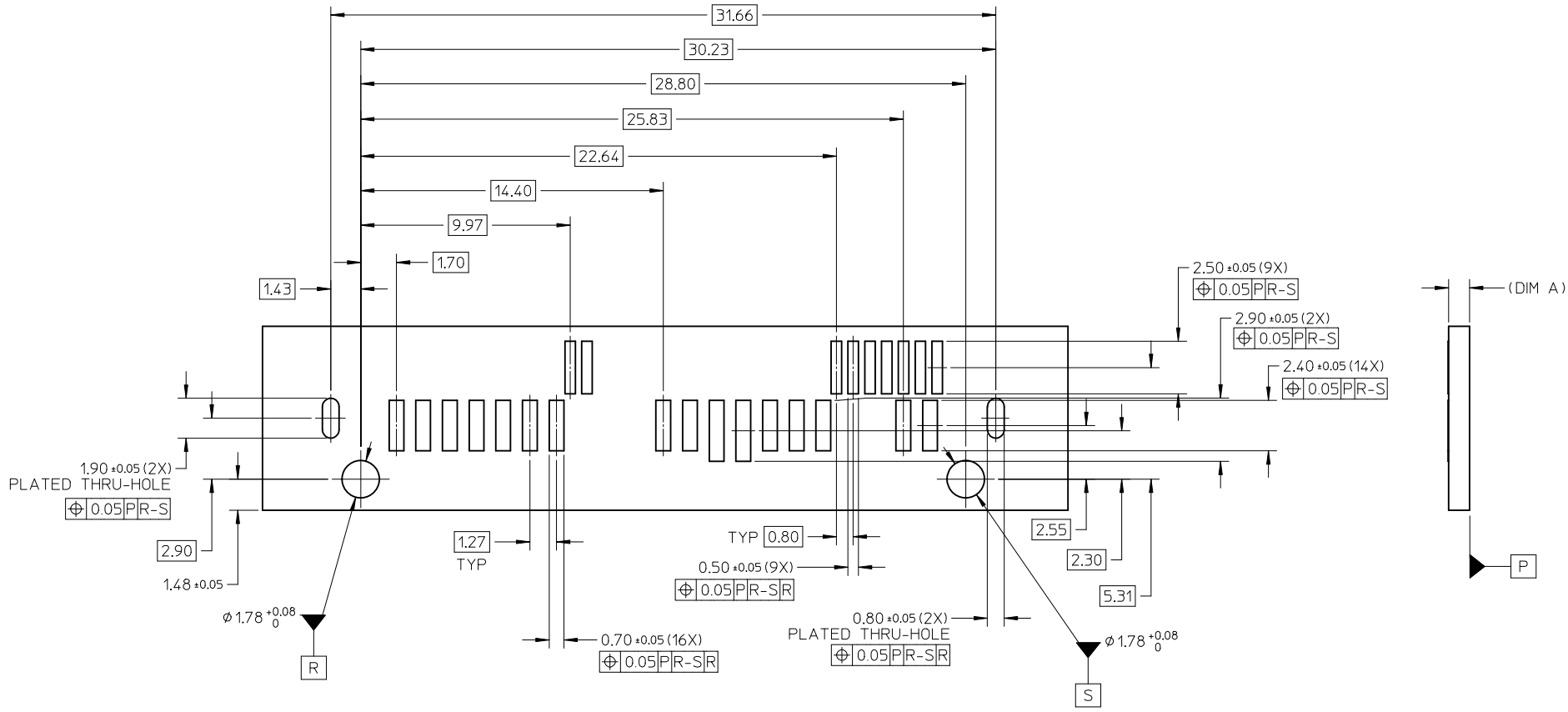


REVISED BASEPLATE EC NO: S2010-0600 DRWING: MEMARLY 2010/01/14 CHKD: SCHEONG 2010/03/31 APPR: BOKKOK 2010/04/01	DESCRIPTION F _A =0 F _C =0 F _P =0	GENERAL TOLERANCES (UNLESS SPECIFIED)		DIMENSION STYLE MM ONLY		SCALE NTS	DESIGN UNITS METRIC	THIRD ANGLE PROJECTION		
			mm	INCH	DRAWN BY	DATE	TITLE			
		4 PLACES	± ---	± ---	YKOH	2008/05/20	MICRO SAS RECEPTACLE R/A, SMT, 3.85MM HEIGHT 1.8 INCH SSD/HDD			
		3 PLACES	± ---	± ---	CHECKED BY	DATE				
2 PLACES	± 0.20	± ---	JTAN02	2008/06/11	MOLEX INCORPORATED					
1 PLACE	± ---	± ---	APPROVED BY	DATE						
ANGULAR ± 3 °		DRAFT WHERE APPLICABLE MUST REMAIN WITHIN DIMENSIONS		SEE TABLE		MOLEX INCORPORATED DOCUMENT NO. SD-78395-001		SHEET NO. 1 OF 4		
MATERIAL NO.		SIZE A3		THIS DRAWING CONTAINS INFORMATION THAT IS PROPRIETARY TO MOLEX INCORPORATED AND SHOULD NOT BE USED WITHOUT WRITTEN PERMISSION						

9 8 7 6 5 4 3 2 1



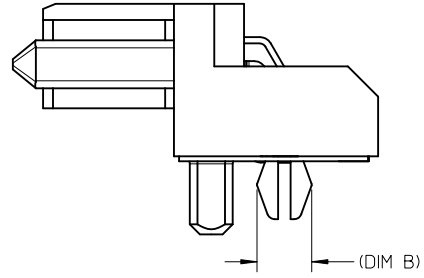
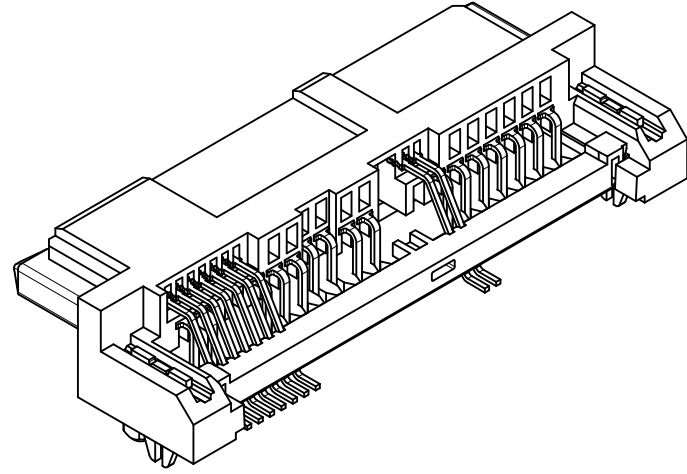
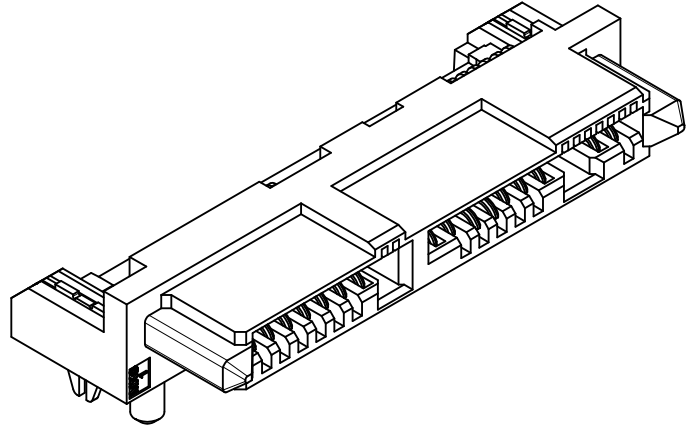
REVISED BASEPLATE EC NO: S2010-0600 DRWN: GEMARLY 2010/01/14 CHKD: SCHEONG 2010/03/31 APPR: BOKKOK 2010/04/01	QUALITY SYMBOLS	GENERAL TOLERANCES (UNLESS SPECIFIED)		DIMENSION STYLE	SCALE	DESIGN UNITS	THIRD ANGLE PROJECTION
	$F_A=0$	mm	INCH	MM ONLY	NTS	METRIC	
	$F_G=0$	4 PLACES	± ---	± ---	DRAWN BY	DATE	TITLE
	$F_P=0$	3 PLACES	± ---	± ---	YKOH	2008/05/20	MICRO SAS RECEPTACLE R/A, SMT, 3.85MM HEIGHT 1.8 INCH SSD/HDD
	2 PLACES	± 0.20	± ---	CHECKED BY	DATE		
	1 PLACE	± ---	± ---	JTAN02	2008/06/11		
	ANGULAR ± 3 °			APPROVED BY	DATE		
	DRAFT WHERE APPLICABLE MUST REMAIN WITHIN DIMENSIONS			BOKKOK	2010/03/31		
		SEE TABLE		MATERIAL NO.	DOCUMENT NO.		
				SD-78395-001			
				THIS DRAWING CONTAINS INFORMATION THAT IS PROPRIETARY TO MOLEX INCORPORATED AND SHOULD NOT BE USED WITHOUT WRITTEN PERMISSION			



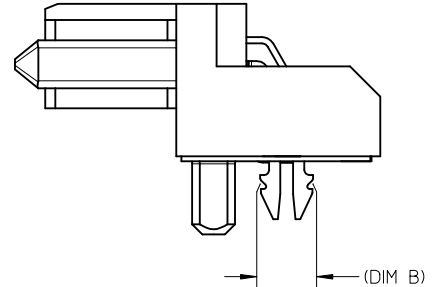
RECOMMENDED PCB LAYOUT

REVISED BASEPLATE EC NO: S2010-0600 DRW: GEMENARLY 2010/01/14 CHK: D. SCHEONG 2010/03/31 APPR: BOKKOK 2010/04/01	QUALITY SYMBOLS	GENERAL TOLERANCES (UNLESS SPECIFIED)		DIMENSION STYLE	SCALE	DESIGN UNITS	THIRD ANGLE PROJECTION
	$F_A=0$	mm	INCH	MM ONLY	NTS	METRIC	
	$F_C=0$	4 PLACES ± ---	± ---	DRAWN BY	DATE	TITLE	
	$F_P=0$	3 PLACES ± ---	± ---	YKOH	2008/05/20	MICRO SAS RECEPTACLE	
	2 PLACES ± 0.20	± ---	CHECKED BY	DATE	R/A, SMT, 3.85MM HEIGHT		
	1 PLACE ± ---	± ---	JTAN02	2008/06/11	1.8 INCH SSD/HDD		
	ANGULAR ± 3 °		APPROVED BY	DATE	MOLEX INCORPORATED		
			BOKKOK	2010/03/31	MOLEX INCORPORATED		
			MATERIAL NO.	DOCUMENT NO.	SD-78395-001		
			DRAFT WHERE APPLICABLE MUST REMAIN WITHIN DIMENSIONS		SEE TABLE		SHEET NO.
					THIS DRAWING CONTAINS INFORMATION THAT IS PROPRIETARY TO MOLEX INCORPORATED AND SHOULD NOT BE USED WITHOUT WRITTEN PERMISSION		3 OF 4

5	4	3	2	1
PART NUMBER	HOLDDOWN	DIM A (PCB THICKNESS)		DIM B
78395-0001	FORKLOCK	1.00±0.10		(2.18)
78395-0002	FORKLOCK	1.20±0.12 TO 1.60±0.16 PCB FORKLOCK HOLE MUST BE PLATED THRU-HOLE (PTH) REGARDLESS WHETHER FORKLOCK IS SOLDERED OR NOT		(2.10)



78395-0001



78395-0002

REVISED BASEPLATE EC NO: S2010-0600 DRWN:GEMARLY 2010/01/14 CHKD:SCHEONG 2010/03/31 APPR:BOKOK 2010/04/01	DESCRIPTION REV	QUALITY SYMBOLS $F_A=0$ $F_C=0$ $F_P=0$	GENERAL TOLERANCES (UNLESS SPECIFIED) mm INCH 4 PLACES ± --- ± --- 3 PLACES ± --- ± --- 2 PLACES ± 0.20 ± --- 1 PLACE ± --- ± --- ANGULAR ± 3 °	DIMENSION STYLE MM ONLY DRAWN BY: YKOH CHECKED BY: JTAN02 APPROVED BY: BOKOK MATERIAL NO.	SCALE: NTS DESIGN UNITS: METRIC THIRD ANGLE PROJECTION DATE: 2008/05/20 DATE: 2008/06/11 DATE: 2010/03/31	TITLE: MICRO SAS RECEPTACLE R/A, SMT, 3.85MM HEIGHT 1.8 INCH SSD/HDD MOLEX MOLEX INCORPORATED DOCUMENT NO. SD-78395-001	SHEET NO. 4 OF 4
	A7		DRAFT WHERE APPLICABLE MUST REMAIN WITHIN DIMENSIONS	SEE TABLE	THIS DRAWING CONTAINS INFORMATION THAT IS PROPRIETARY TO MOLEX INCORPORATED AND SHOULD NOT BE USED WITHOUT WRITTEN PERMISSION		
					SIZE: A3		