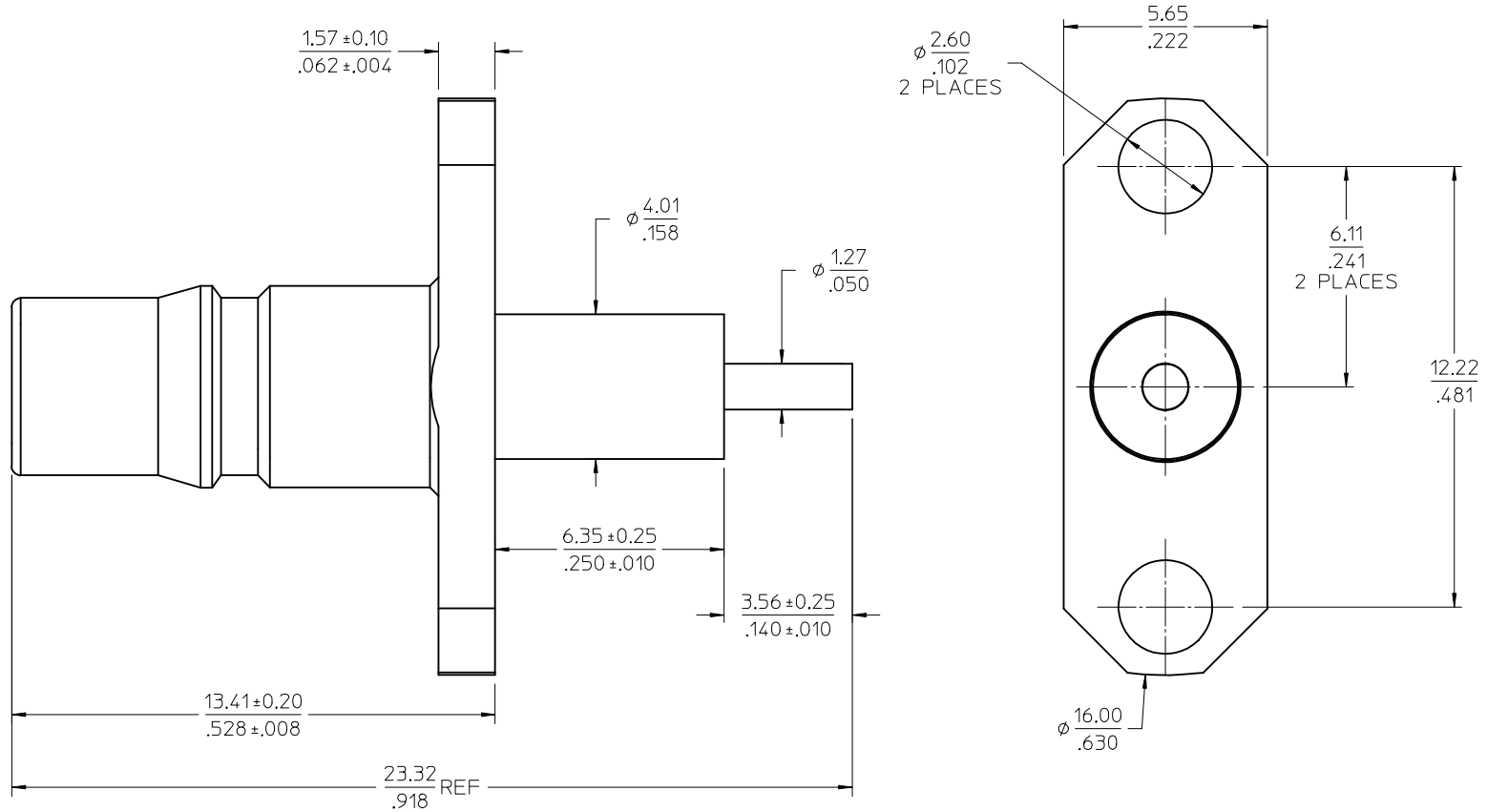
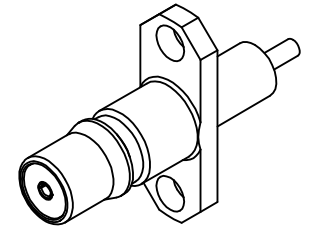


MATERIALS AND FINISHES

BODY BRASS
PLATED GOLD OVER NICKEL PHOSPHOR

CENTER CONTACT BERYLLIUM COPPER
PLATED GOLD OVER NICKEL

INSULATOR TEFLON



73254-0431	ONE PER BAG
73254-0430	TRAY
PART NO.	PACKAGING

PS-89675-1330	QMA
SPECIFICATION	DESCRIPTION

CHG: UPDATE PACKAGING FOR 73254-0430 PER RF15-E219	EC NO: URF2015-0667	2015/05/27
DRW: YR	CHKD: YR	2015/05/27
APPR: YCHENG	DESCRIPTION	2015/05/29
REV: A3	QUALITY SYMBOLS	

GENERAL TOLERANCES (UNLESS SPECIFIED)	
	mm INCH
4 PLACES	± .010 ± .0004
3 PLACES	± .015 ± .0005
2 PLACES	± .020 ± .0006
1 PLACE	± .030 ± .0008
0 PLACE	± .040 ± .0010
ANGULAR ± 2°	
DRAFT WHERE APPLICABLE MUST REMAIN WITHIN DIMENSIONS	

DIMENSION STYLE	
MM/IN	
DRAWN BY	DATE
JDW	2009/11/18
CHECKED BY	DATE
SSS	2009/11/18
APPROVED BY	DATE
JDW	2009/11/18
MATERIAL NO.	DOCUMENT NO.
SEE TABLE	SD-73254-043

SCALE	DESIGN UNITS	THIRD ANGLE PROJECTION
10:1	METRIC	
TITLE		
QMA JACK, STRAIGHT 2 HOLE FLANGE RECEPTACLE EWR-24255, QMA-JR		
molex		
SHEET NO.		1 OF 1
THIS DRAWING CONTAINS INFORMATION THAT IS PROPRIETARY TO MOLEX INCORPORATED AND SHOULD NOT BE USED WITHOUT WRITTEN PERMISSION		