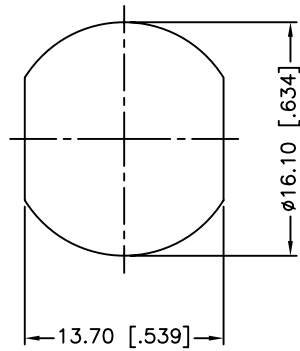
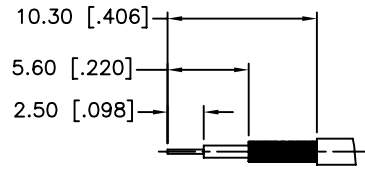


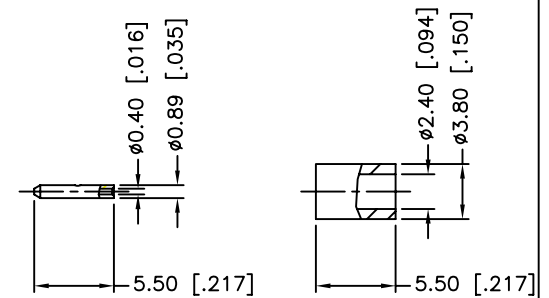
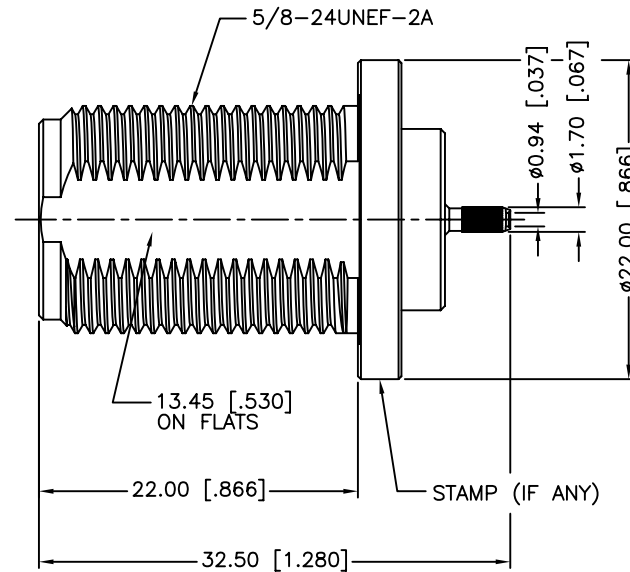
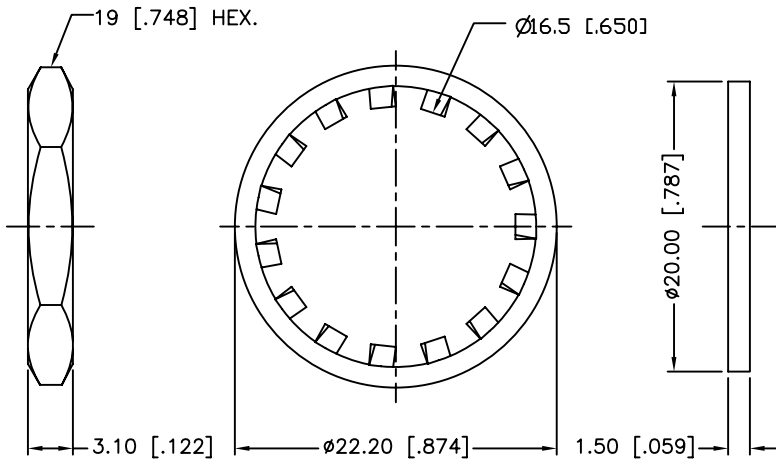
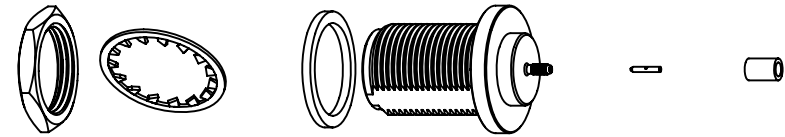
REV.	DATE	ECR NO.	DESCRIPTION
NC	04/29/04	XXXXXX	INITIAL RELEASE
A	08/31/12	2359	UPDATE DRAWING FORMAT, IMPROVE ELECTRICAL PERFORMANCE, MODIFY CRIMP TOOL



RECOMMENDED MOUNTING HOLE DIM'S



RECOMMENDED CABLE STRIPPING DIM'S



1. IMPEDANCE: 50 OHM
2. FREQUENCY RANGE: DC - 2.5 GHz
3. VSWR (RETURN LOSS): 1.2 MAX. @ 0-2.5 GHz  
1.4 MAX. @ 2.5-6 GHz
4. DIELECTRIC WITHSTANDING VOLTAGE: 1500 VRMS MIN.
5. DURABILITY: 500 CYCLES MIN.
6. TEMPERATURE RANGE: -65°C TO +165°C
7. CRIMPED FERRULE  
HEX CRIMP SIZE .128"
8. CONTACT PIN CAN BE SOLDERED  
OR USE 4-WAY INDENT TOOL #47025
9. MAX. PANEL THICKNESS=6.5mm

QTY	DESCRIPTION	MATERIAL	FINISH	QTY
9	FERRULE	COPPER	NEXCOTE	1
8	CONTACT PIN	BRASS	GOLD	1
7	HEX NUT	BRASS	NEXCOTE	1
6	LOCK WASHER	BRASS	NEXCOTE	1
5	GASKET	SILICON RUBBER	RED	1
4	BARREL	BRASS	NEXCOTE	1
3	CONTACT PIN	PHOSPHOR BRONZE	GOLD	1
2	INSULATOR	PTFE	NATURAL	1
1	BODY	BRASS	NEXCOTE	1

UNLESS OTHERWISE SPECIFIED DIMENSIONS ARE IN MILLIMETERS. DIMENSIONS IN [ ] ARE IN INCHES AND FOR CUSTOMER REFERENCE ONLY.

UNLESS OTHERWISE SPECIFIED TOLERANCES FOR MILLIMETERS ARE:  
0.5 - 8mm ± 0.20mm  
8 - 30mm ± 0.40mm  
30 - 120mm ± 0.50mm

UNLESS OTHERWISE SPECIFIED TOLERANCES FOR INCHES ARE:  
.020 - .315 = ± 0.007"  
.315 - 1.180 = ± 0.015"  
1.180 - 4.724 = ± 0.020"

DO NOT SCALE DRAWING

APPROVALS	DATE
DRAWN M.ZHANG	08/31/12
CHECKED	
ISSUED	
SHEET 1 OF 1	
CAD FILE C:/CONNEX/172313.DWG	

PART DESCRIPTION			
<b>Amphenol Connex</b>			
N BULKHEAD CRIMP JACK (FOR RG-178B/U, RG-196A/U CABLE)			
PART NO.		172313	
DWG. NO.	172313.DWG	REV.	A
SIZE	A	SCALE	NA