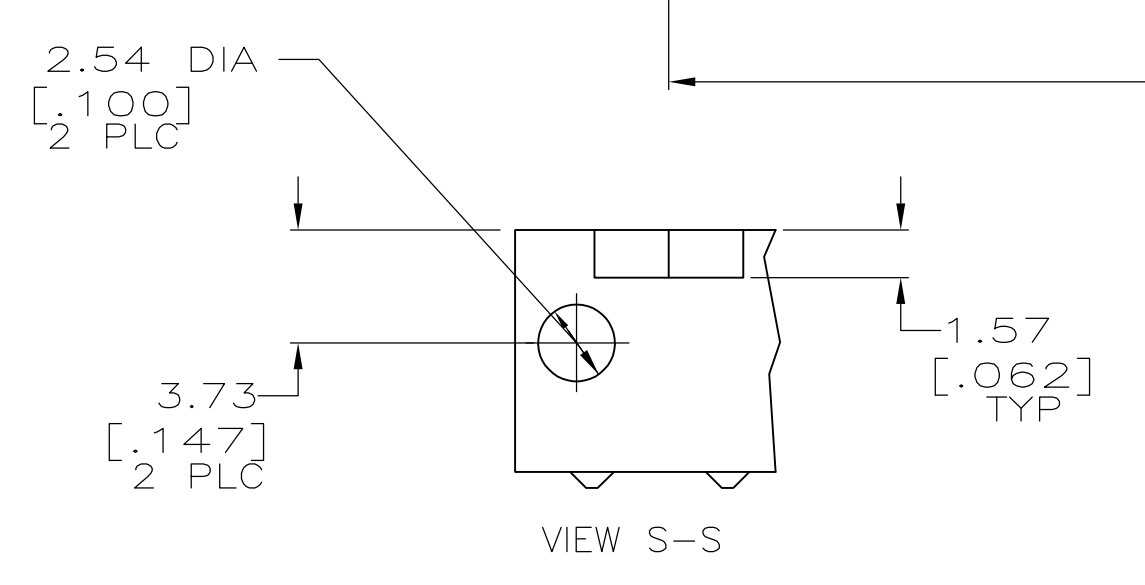
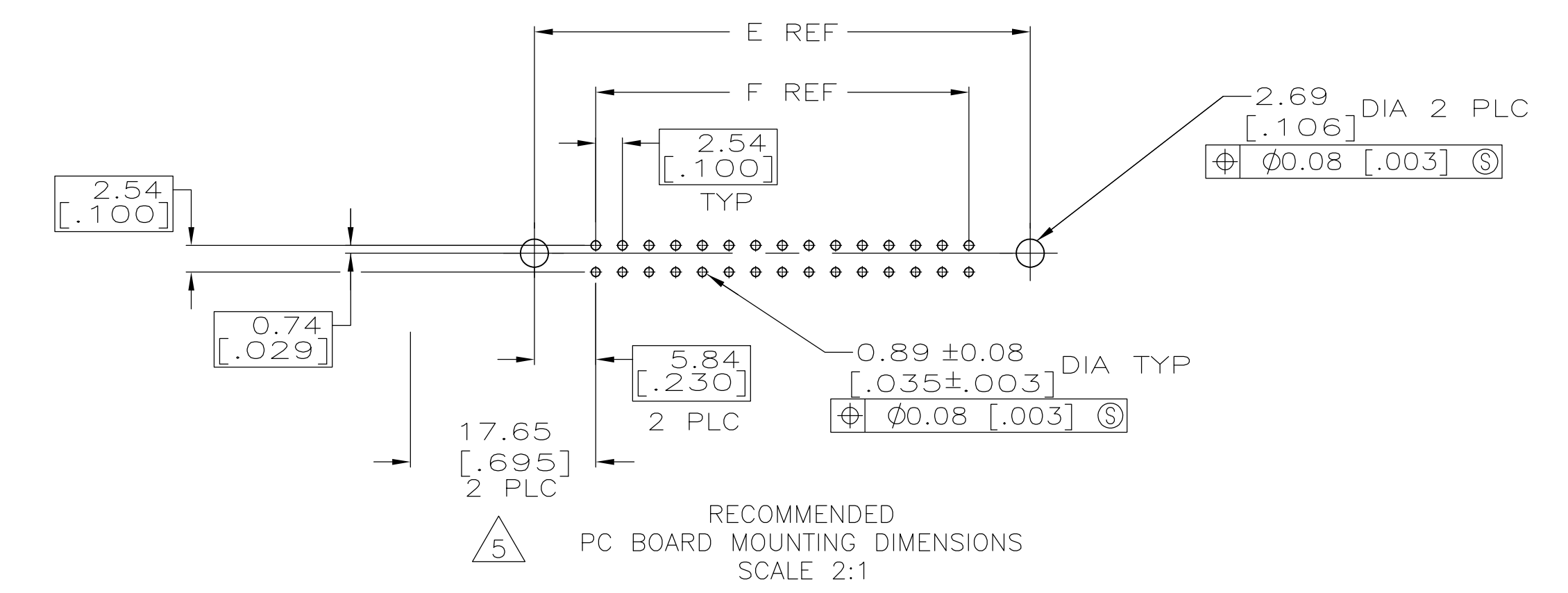
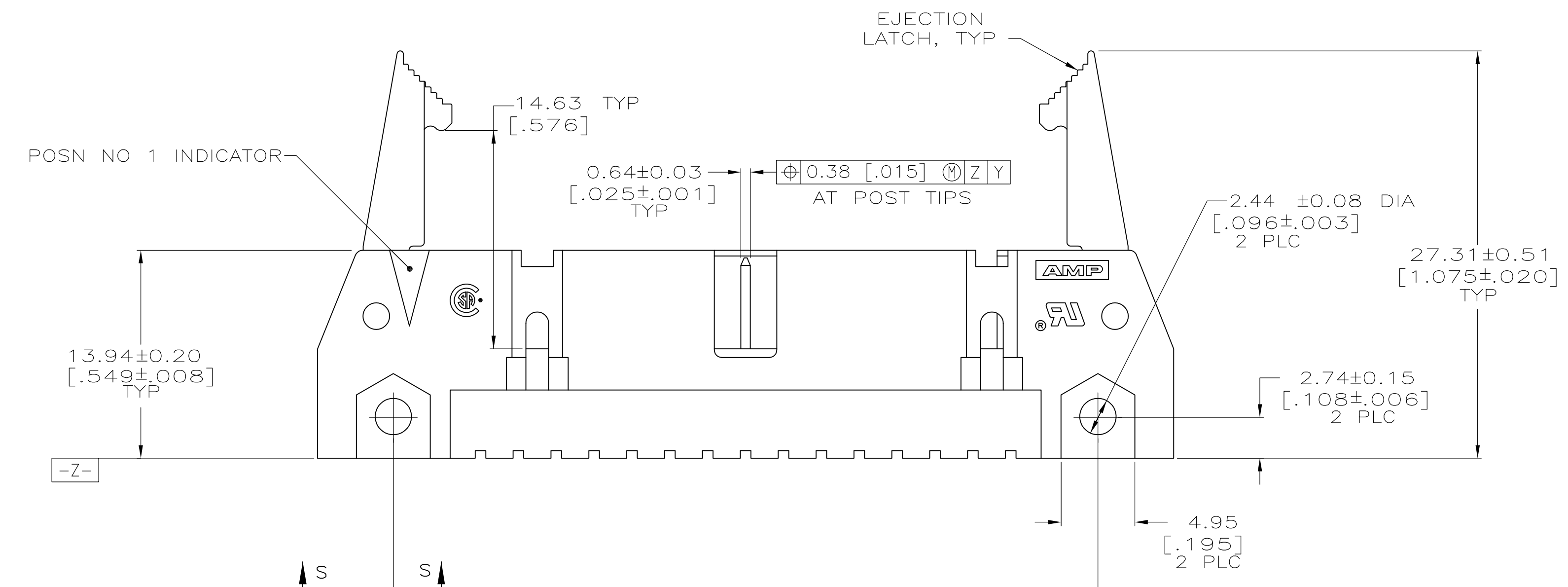
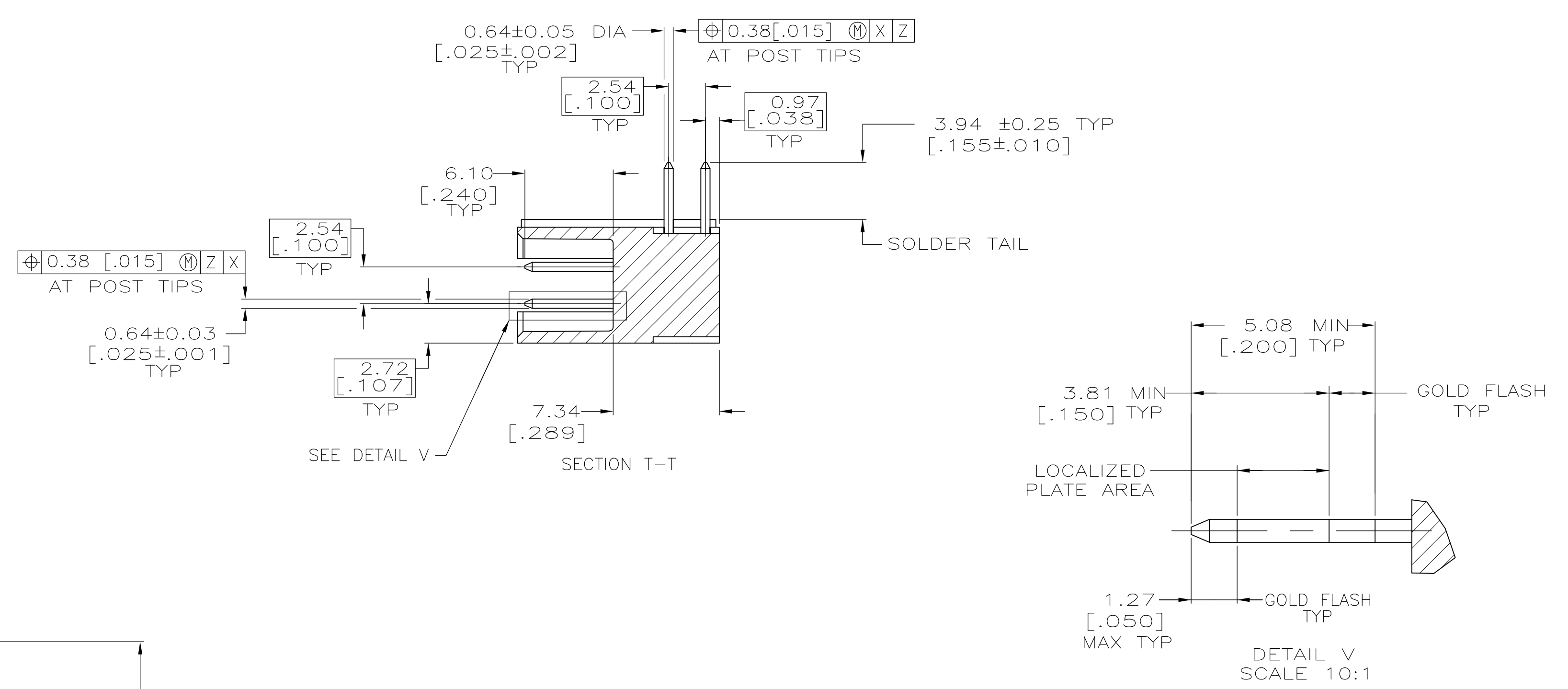
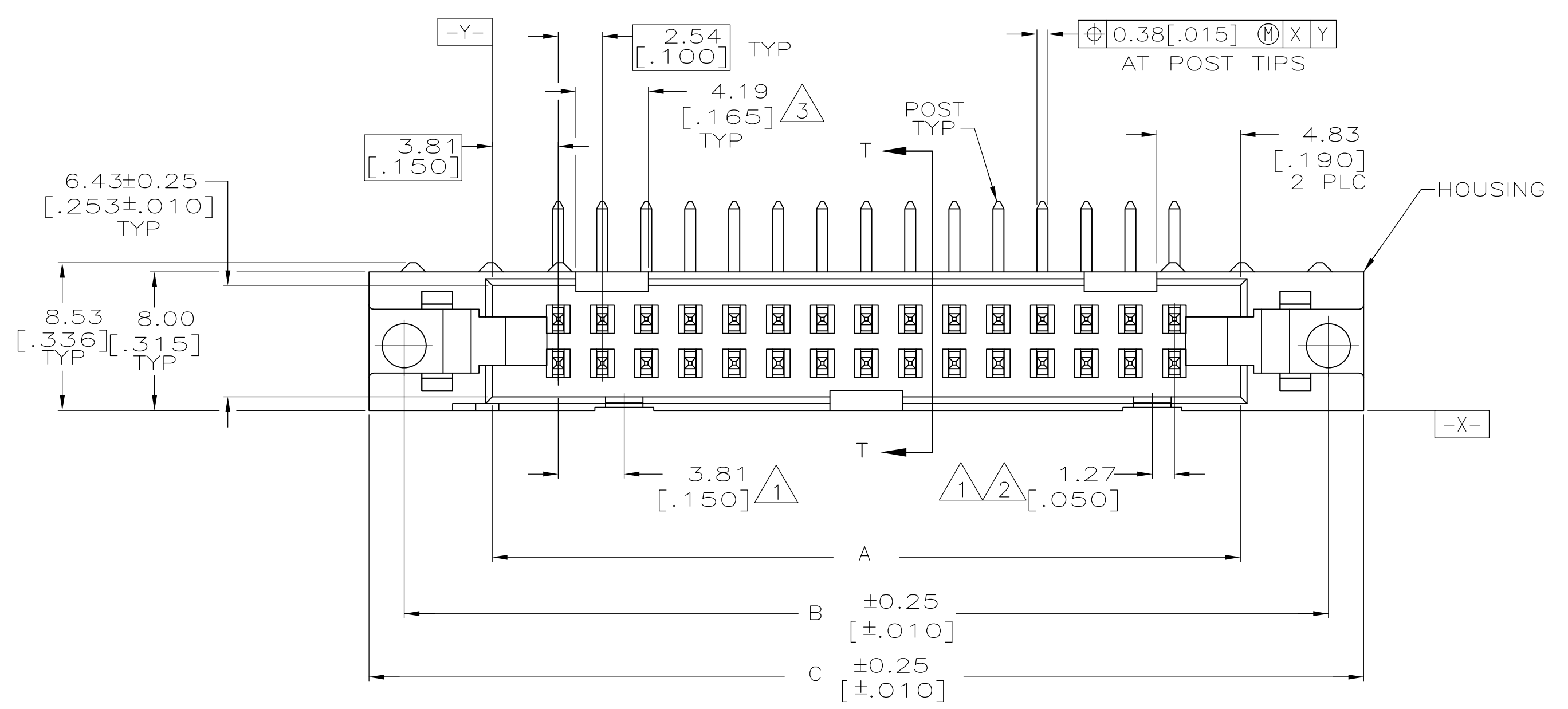


EJECTION LATCHES OMITTED IN THIS VIEW FOR CLARITY



THIS DRAWING IS A CONTROLLED DOCUMENT.		DIN H.MOLL 4-23-90	Tyco Electronics Tyco Electronics Corporation Harrisburg, PA 17105-3608
DIMENSIONS: mm [INCHES]		CHK R.STONE 11-28-90	
TOLERANCES UNLESS OTHERWISE SPECIFIED:		APVD	NAME
0 PLC ± -	1 PLC ± -	PRODUCT SPEC	
2 PLC ± 0.13[.005]	3 PLC ± -	108-40018	
4 PLC ± -	ANGLES ± -	APPLICATION SPEC	
MATERIAL SEE SHEET 2	FINISH SEE SHEET 2	WEIGHT	SIZE CAGE CODE DRAWING NO RESTRICTED TO
		A1 00779	499925
CUSTOMER DRAWING		SCALE 4:1	SHEET 1 OF 2 REV K

- △ COORDINATE DIMENSION APPLIES FROM BASIC LOCATION.
- △ 10 AND 14 POSITION SIZES CONTAIN ONLY ONE SLOT FOR SNAP-IN POLARIZER (MILITARY POLARIZATION) LOCATED AS SHOWN.
- △ 10 POSITION SIZES CONTAIN ONLY ONE SLOT FOR DUAL POLARIZATION, LOCATED AS SHOWN.
- 4. RECOMMENDED PRINTED CIRCUIT BOARD THICKNESS IS 3.18 [.125].
- △ 5. DISTANCE REQUIRED BY EJECTION LATCHES IN THE OPEN POSITION.
- △ 6. POSTS:  
 GOLD FLASH OVER PALLADIUM-NICKEL PLATE, 0.38μm [.000015] MIN TOTAL ON THE LOCALIZED PLATE AREA,  
 2.54μm [.000100] MIN TIN-LEAD PLATE ON THE SOLDER-TAIL,  
 1.27μm [.000050] MIN NICKEL UNDERPLATE ON THE ENTIRE POST.  
 OR  
 0.38μm [.000015] MIN GOLD PLATE ON THE LOCALIZED PLATE AREA,  
 2.54μm [.000100] MIN TIN-LEAD PLATE ON THE SOLDER-TAIL,  
 1.27μm [.000050] MIN NICKEL UNDERPLATE ON THE ENTIRE POST.
- △ MATERIAL:  
 HOUSING: GLASS FILLED NYLON OR POLYESTER, 94V-0 RATED, BLACK.  
 POSTS: BRASS.

OBSOLETE	-	-	53.34 [2.100]	65.02 [2.560]	65.02 [2.560]	75.18 [2.960]	71.12 [2.800]	60.96 [2.400]	44	1-499925-3
		1-102322-2	78.74 [3.100]	90.42 [3.560]	90.42 [3.560]	100.58 [3.960]	96.52 [3.800]	86.36 [3.400]	64	1-499925-2
OBSOLETE	-	-	2.900 [2.900]	3.360 [3.360]	3.360 [3.360]	3.760 [3.760]	3.600 [3.600]	3.200 [3.200]	60	1-499925-1
	-	-	60.96 [2.400]	72.64 [2.860]	72.64 [2.860]	82.80 [3.260]	78.74 [3.100]	68.58 [2.700]	50	1-499925-0
		102322-9	48.26 [1.900]	59.94 [2.360]	59.94 [2.360]	70.10 [2.760]	66.04 [2.600]	55.88 [2.200]	40	499925-9
		102322-8	40.64 [1.600]	52.32 [2.060]	52.32 [2.060]	62.48 [2.460]	58.42 [2.300]	48.26 [1.900]	34	499925-8
	102162-7	102320-1	35.56 [1.400]	47.24 [1.860]	47.24 [1.860]	57.40 [2.260]	53.34 [2.100]	43.18 [1.700]	30	499925-7
		102322-6	30.48 [1.200]	42.16 [1.660]	42.16 [1.660]	52.32 [2.060]	48.26 [1.900]	38.10 [1.500]	26	499925-6
	102162-5	102320-1	27.94 [1.100]	39.62 [1.560]	39.62 [1.560]	49.78 [1.960]	45.72 [1.800]	35.56 [1.400]	24	499925-5
		102322-4	22.86 [.900]	34.54 [1.360]	34.54 [1.360]	44.70 [1.760]	40.64 [1.600]	30.48 [1.200]	20	499925-4
	102162-3	102320-1	17.78 [.700]	29.46 [1.160]	29.46 [1.160]	39.62 [1.560]	35.56 [1.400]	25.40 [1.000]	16	499925-3
		102322-2	15.24 [.600]	26.92 [1.060]	26.92 [1.060]	37.08 [1.460]	33.02 [1.300]	22.86 [.900]	14	499925-2
		102322-1	10.16 [.400]	21.84 [.860]	21.84 [.860]	32.00 [1.260]	27.94 [1.100]	17.78 [.700]	10	499925-1
HEADER ASSY QTY:1	LATCH QTY:2		F	E	D	C	B	A	NO OF POSN	PART NUMBER
SUPERSEDED BY										

THIS DRAWING IS A CONTROLLED DOCUMENT.		DIN 4-23-90	Tyco Electronics Corporation Harrisburg, PA 17105-3608	
DIMENSIONS: mm [INCHES]		11-28-90	Tyco Electronics	
TOLERANCES UNLESS OTHERWISE SPECIFIED:		APVD	NAME	
0. PLC ± -	1. PLC ± -	2. PLC ± 0.13[.005]	PRODUCT SPEC	
3. PLC ± -	4. PLC ± -	ANGLES ± -	APPLICATION SPEC	
MATERIAL		FINISH	SIZE	CAGE CODE
△		△	A1	00779
			DRAWING NO	RESTRICTED TO
			499925	
			WEIGHT	SCALE
				4:1
			CUSTOMER DRAWING	SHEET 2 OF 2