



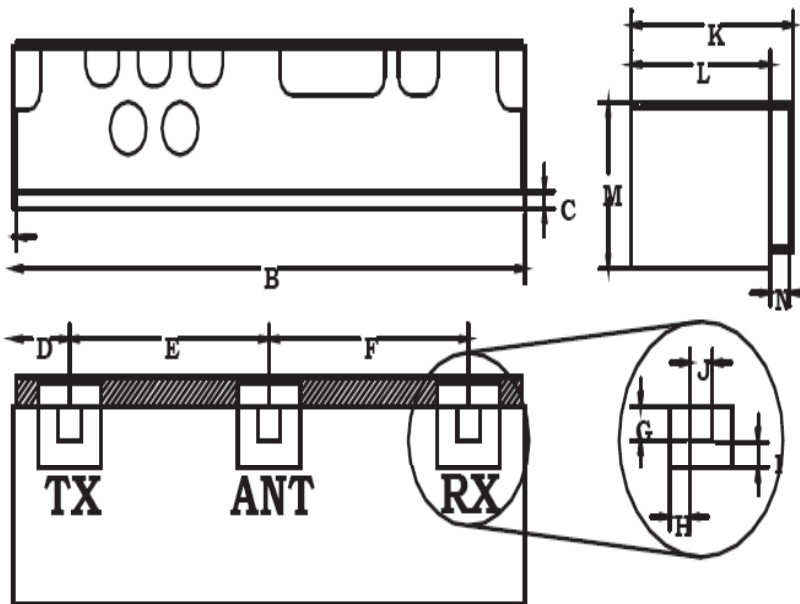
<u>Characteristics</u>	<u>Band 1</u>	<u>Band 2</u>
Passband:	1850-1909.4 MHz	1930.6-1990 MHz
Bandwidth:	59.4 MHz	59.4 MHz
Passband Return Loss:	10 dB min	10 dB min
Passband Insertion Loss:	3.2 dB max	3.7 dB max
Passband Ripple:	2.6 dB max	3 dB max
Input / Output Impedance:	50 Ohms	50 Ohms
Isolation:	55 dB min	50.5 dB min
Power Handling:	2 W max	2 W max

<u>Mechanical</u>	
Mounting Method:	SMT
Dimensions:	19.92 x 6.45 x 4.6 mm

<u>Environmental</u>	
Operating Temperature:	-40 to +70 deg.C
Storage Temperature:	-50 to +90 deg.C

This product is RoHs compliant.

Outline Drawing:



Dim	Nominal (mm)	Tolerance (mm) +/- or max
*A	0.13	0.25
B	19.92	max
*C	0.69	0.13
D	2.2	0.25
E	7.7	0.13
F	7.7	0.13
G	0.89	0.13
H	0.76	0.13
I	0.76	0.13
J	0.89	0.13
K	6.45	max
L	5.37	0.2
M	4.6	max
*N	0.76	0.13
*Indicates Reference Only		

Available at our Web store:

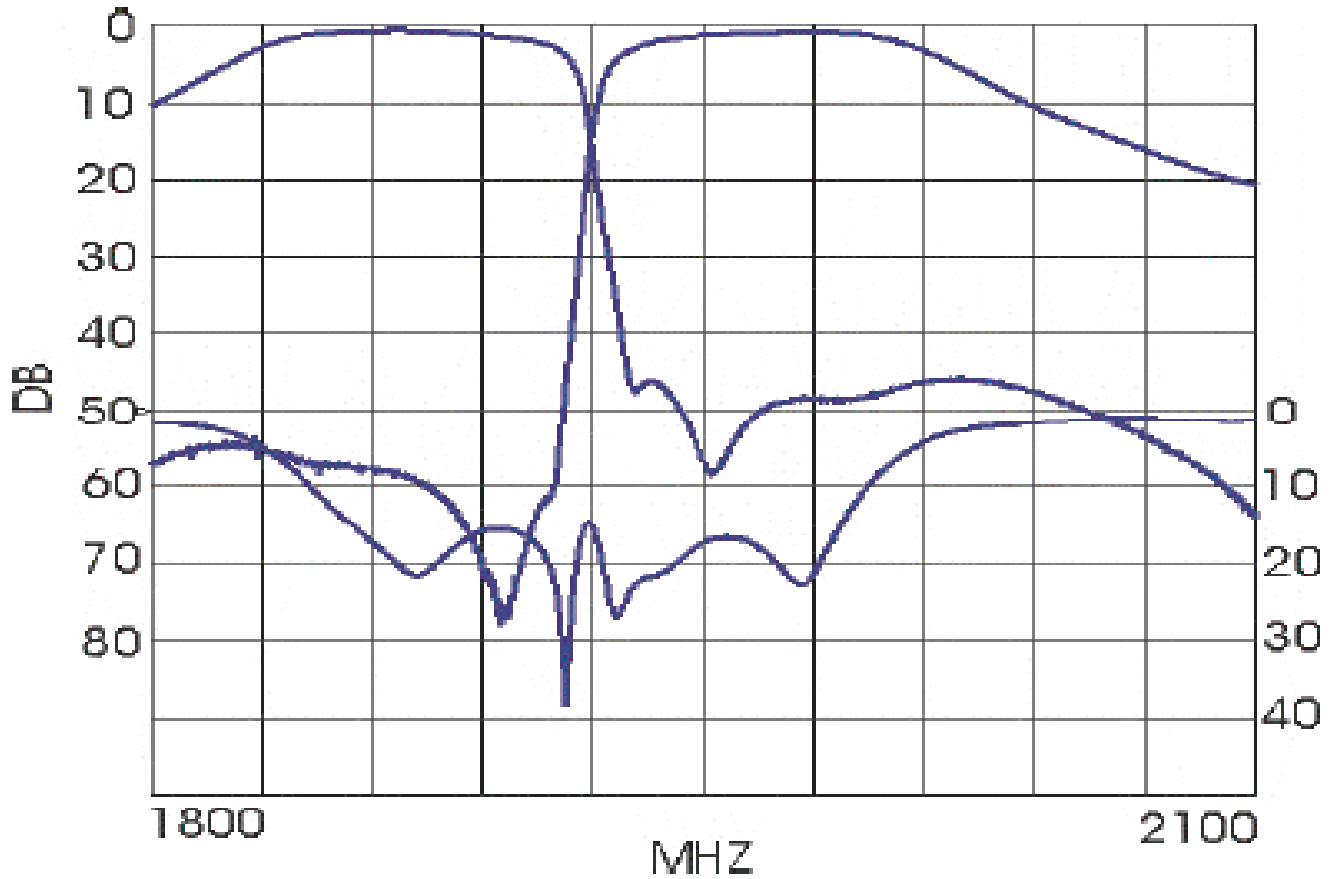


ANATECH ELECTRONICS INC
RF & Microwave Filters & Products

Part Number: AM1900D343



Response Plot:



Available at our Web store:

70 Outwater Lane Phone: (973) 772-4242
Garfield, NJ 07026 Fax : (973) 772-4646



Email: sales@anatechelectronics.com
Web: www.anatechelectronics.com