









# EVALUATION BOARD SCHEMATICS AND ARTWORK

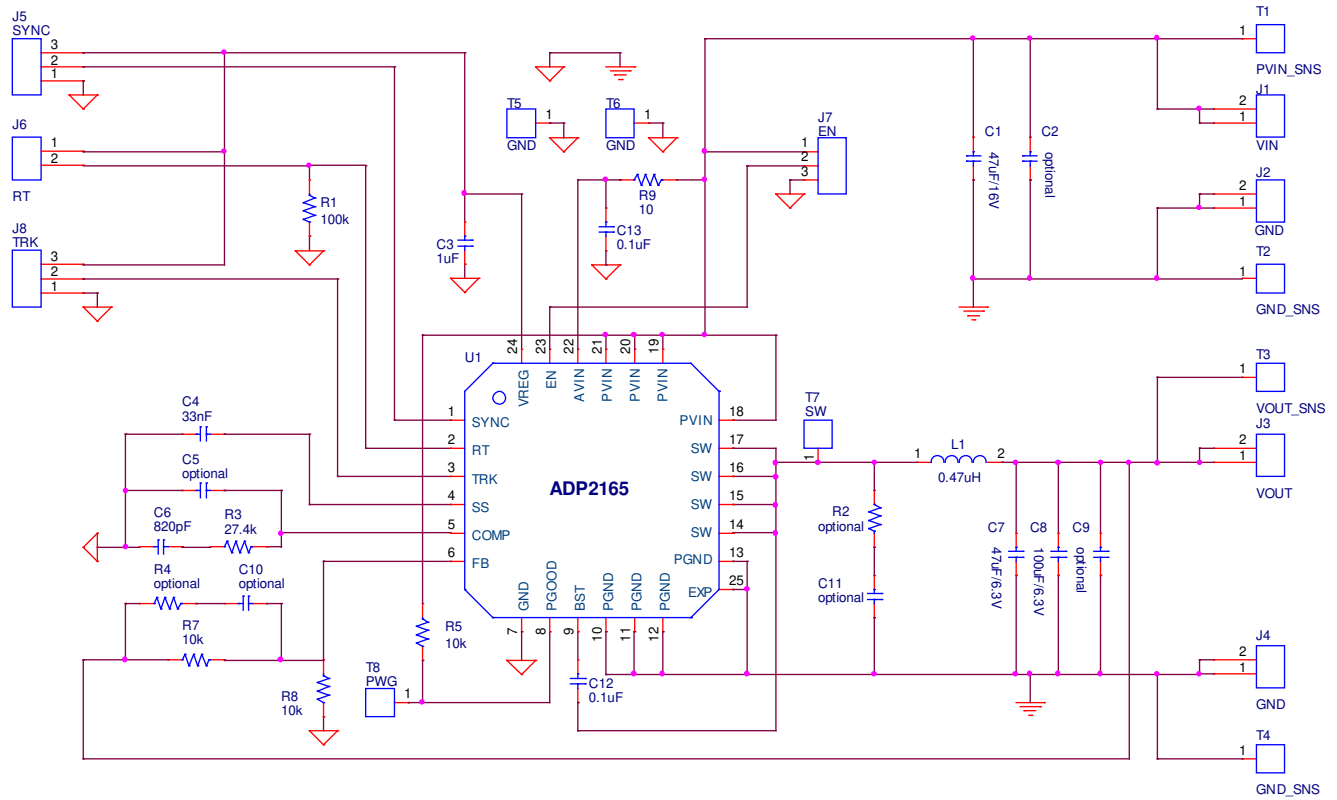


Figure 4. Schematic of the ADP2165-EVALZ

11592-009

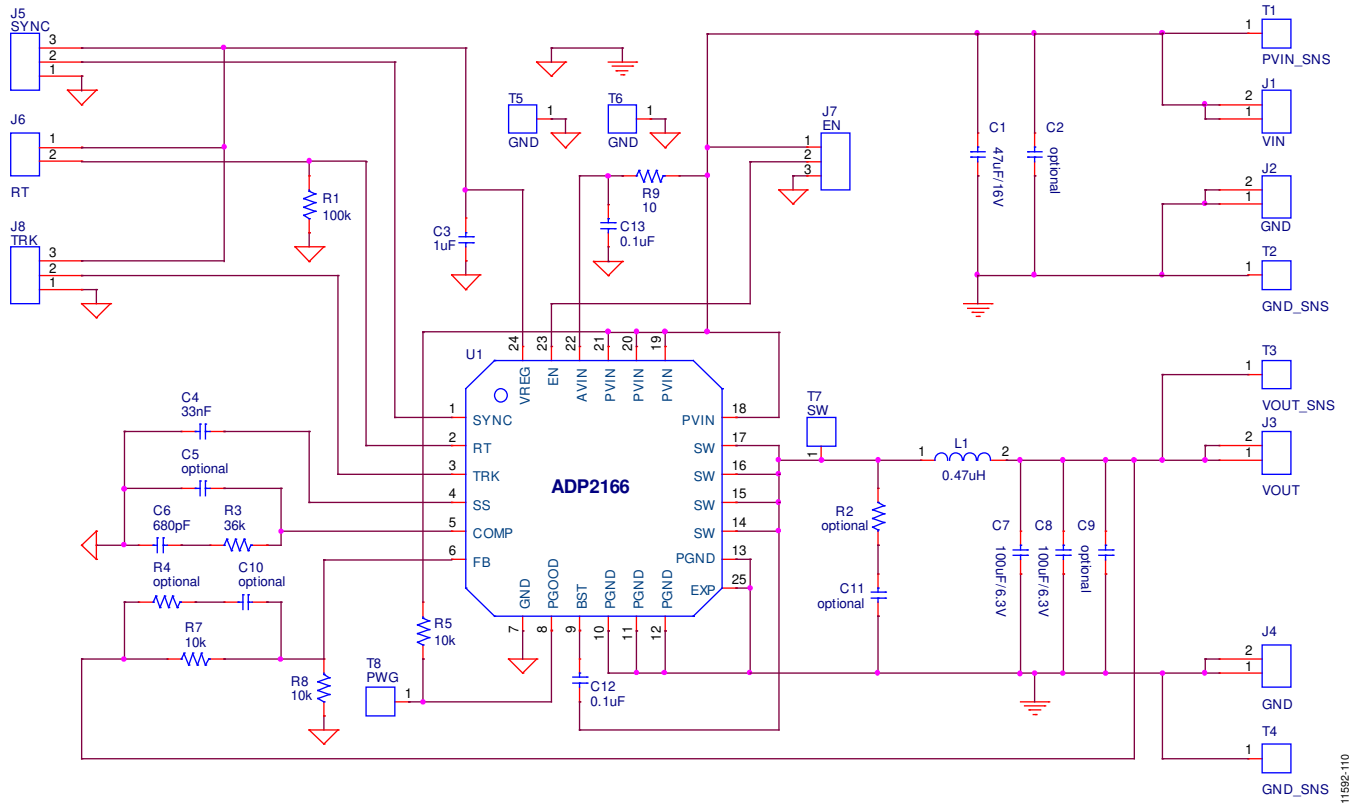


Figure 5. Schematic of the ADP2166-EVALZ

11592-110

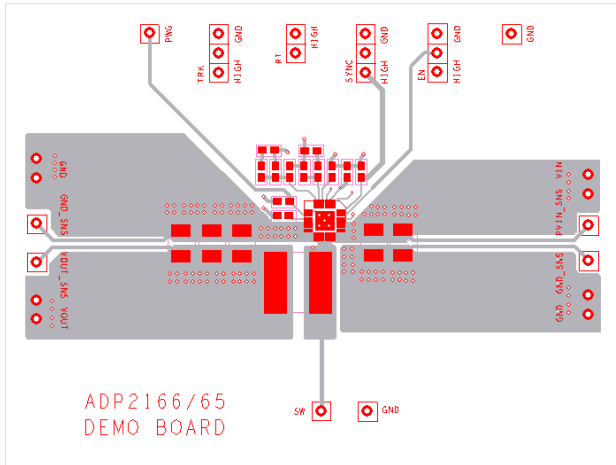


Figure 6. Top Layer

11592-010

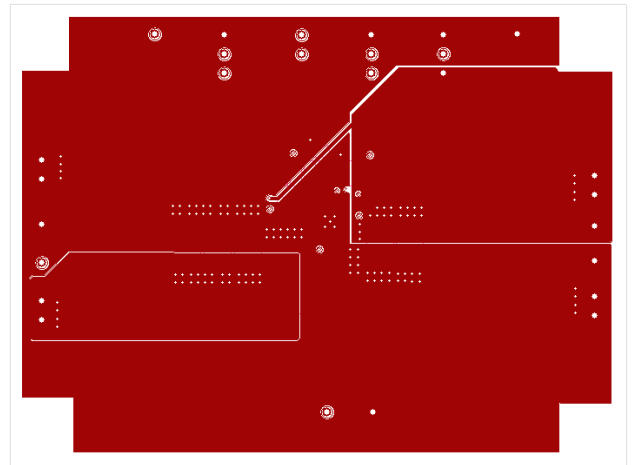


Figure 8. Third Layer

11592-011

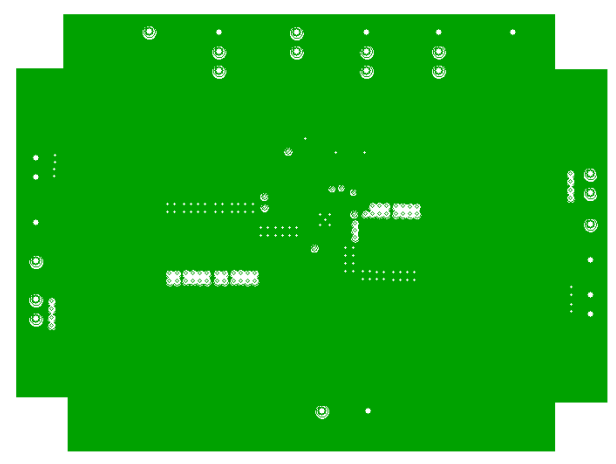


Figure 7. Second Layer

11592-012

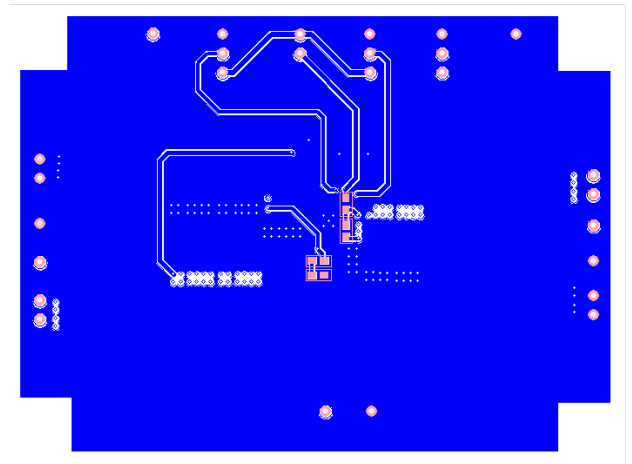


Figure 9. Bottom Layer

11592-013

**ORDERING INFORMATION****BILL OF MATERIALS**

Table 2.

Qty	Reference Designator	Description	PCB Footprint	Vendor	Part No.
1	C1	Capacitor, 47 $\mu$ F, 16 V	C1210	Murata	GRM32ER61C476KE15
1	C2, C9	Capacitor, optional	C1210		
1	C3	Capacitor, 1 $\mu$ F	C0603	Murata	GRM188R71E105KA12
1	C4	Capacitor, 33 nF	C0603	Murata	GRM188R71E333KA01
1	C5	Capacitor, optional	C0603	Murata	
1	C6	Capacitor, 820 pF	C0603	Murata	GRM1885C1H821JA01
1	C7	Capacitor, 47 $\mu$ F, 6.3 V	C1210	Murata	GRM32ER60J476ME20
1	C8	Capacitor, 100 $\mu$ F, 6.3 V	C1210	Murata	GRM32ER60J107ME20
2	C10, C11	Capacitor, optional	C0603		
2	C12, C13	Capacitor, 0.1 $\mu$ F	C0603	Murata	GRM188R71E104KA01
1	L1	Inductor, 0.47 $\mu$ H	Inductor, 7 $\times$ 7	Würth Elektronik	744314047
1	R1	Resistor, 100 k $\Omega$	R0603	Vishay	CRCW0603100KFKTA
2	R2, R4	Resistor, optional	R0603		
1	R3	Resistor, 27.4 k $\Omega$	R0603	Vishay	CRCW060327K4FKTA
3	R5, R7, R8	Resistor, 10 k $\Omega$	R0603	Vishay	CRCW060310KFKTA
1	R9	Resistor, 10 k $\Omega$	R0603	Vishay	CRCW060310RFKTA
1	U1	IC	24-lead LFCSP_WQ	Analog Devices, Inc.	<a href="#">ADP2165</a>
4	J1, J2, J3, J4	Connector	SIP2	Harwin	M20-9990245
3	J5, J7, J8	Jumper	SIP3	Harwin	M20-9990246
1	J6	Jumper	SIP2	Harwin	M20-9990245
8	T1, T2, T3, T4, T5, T6, T7, T8	Test point	SIP1	Harwin	M20-9990245



Table 3.

Qty	Reference Designator	Description	PCB Footprint	Vendor	Part No.
1	C1	Capacitor, 47 $\mu$ F, 16 V	C1210	Murata	GRM32ER61C476KE15
1	C2, C9	Capacitor, optional	C1210		
1	C3	Capacitor, 1 $\mu$ F	C0603	Murata	GRM188R71E105KA12
1	C4	Capacitor, 33 nF	C0603	Murata	GRM188R71E333KA01
1	C5	Capacitor, optional	C0603	Murata	
1	C6	Capacitor, 680 pF	C0603	Murata	GRM1885C1H681JA01
2	C7, C8	Capacitor, 100 $\mu$ F, 6.3 V	C1210	Murata	GRM32ER60J107ME20
2	C10, C11	Capacitor, optional	C0603		
2	C12, C13	Capacitor, 0.1 $\mu$ F	C0603	Murata	GRM188R71E104KA01
1	L1	Inductor, 0.47 $\mu$ H	Inductor, 7 $\times$ 7	Würth Elektronik	744314047
1	R1	Resistor, 100 k $\Omega$	R0603	Vishay	CRCW0603100KFKTA
2	R2, R4	Resistor, optional	R0603		
1	R3	Resistor, 36 k $\Omega$	R0603	Vishay	CRCW060336KFKTA
3	R5, R7, R8	Resistor, 10 k $\Omega$	R0603	Vishay	CRCW060310KFKTA
1	R9	Resistor, 10 k $\Omega$	R0603	Vishay	CRCW060310RFKTA
1	U1	IC	24-lead LFCSP_WQ	Analog Devices	<a href="#">ADP2166</a>
4	J1, J2, J3, J4	Connector	SIP2	Harwin	M20-9990245
3	J5, J7, J8	Jumper	SIP3	Harwin	M20-9990246
1	J6	Jumper	SIP2	Harwin	M20-9990245
8	T1, T2, T3, T4, T5, T6, T7, T8	Test point	SIP1	Harwin	M20-9990245

**NOTES**

## NOTES

