

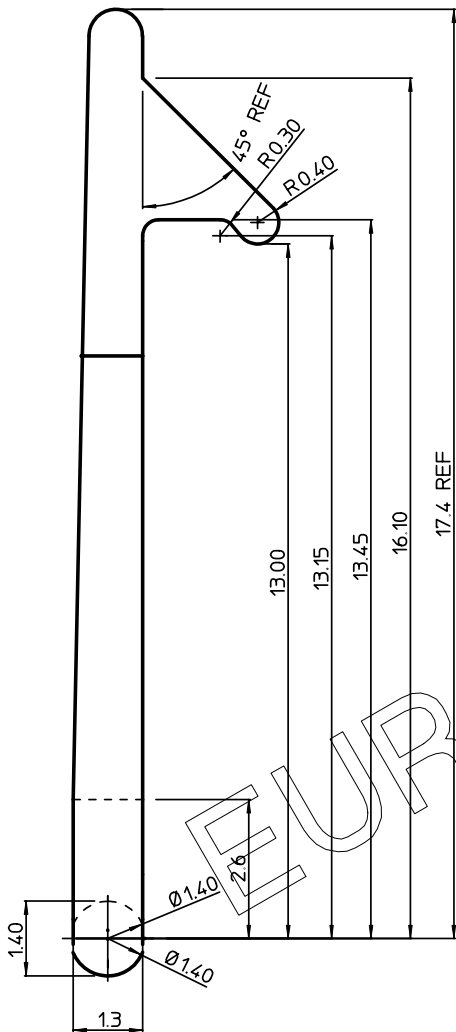
GEN. ST.	01	02	03	04	05	06	07	08	0D	50	60	70	80	90																	
INT. ST.	10	11	12	13	14	18	20	31	32	33	34	38	39	40	42	43	44	45	46	48	56	70	72	73	75	76	81	82	83	84	88

REV.	DATE	DESCRIPTION	BY	C'K'D'
A	2001-09-13	CONVERSION REVISION 02	KN	
B	2009-02-19	109-0027	GEORGE	AB

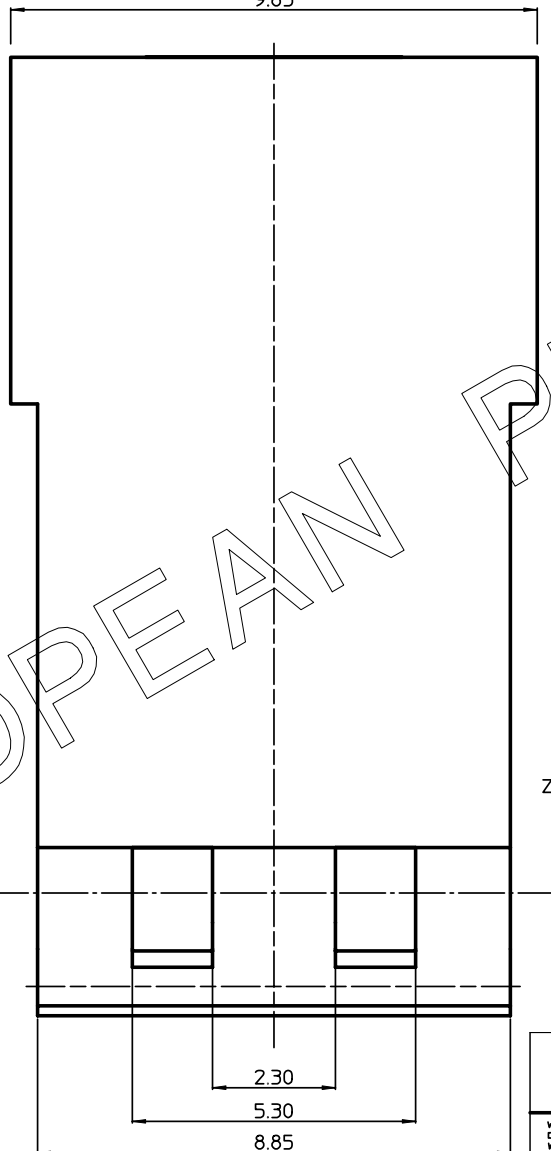
SECTION ZZ



9.85



EUROPEAN PROJECTION



NOTES

1. MATERIAL : POLYESTER  
COLOUR GREY
2. THE PRODUCT (LF) MEETS EUROPEAN UNION DIRECTIVES AND OTHER COUNTRY REGULATIONS AS DESCRIBED IN GS-22-008

1DEC ±0,2 2DEC ±0,1 ANGLES ±1°	<b>APPR.</b>	<b>DATE</b>	<b>SIGN.</b>	LOCKING KEY HM2 CABLE CONNECTOR
WE RESERVE THE RIGHT TO CHANGE DIMENSIONS OR REQUIREMENTS WITHOUT PRIOR NOTICE.	DRAFT	1999-02-04	N. Otto	<b>CAT. No.</b> HM2LK1LF
ALL DIMENSIONS IN MM	CHECKED			<b>FCJ</b> www.fciconnect.com
	PR. ENG. MGR.			SCALE
	PR. MGT. MGR.			



REFERENCES

BS,C ,201492,001 B

THIS IS OUR EXCLUSIVE PROPERTY. IT IS NOT TO BE COPIED, REPRINTED OR DISCLOSED TO A THIRD PARTY, NOR USED FOR MANUFACTURING WITHOUT OUR WRITTEN CONSENT, AND HAS TO BE RETURNED TO US IN CASE OF NO USAGE

DIT IS ONZE EIGENDOM EN MAG NIET NAGEMAAKT, HERDRUKT, OVERGEMAAKT AAN DERDEN, NOCH VOOR FABRIKATIE GEBRUIKT WORDEN, ZONDER ONZE SCHRIFTELIJKE TOELATING. BIJ NIET GEBRUIK IS TERUGZENDING VERPLICHT.

PDM: Rev:B

STATUS: Released DRAWING No. 2 CUSTOMER DRAWING REVISION 1 Printed: Mar 03, 2009