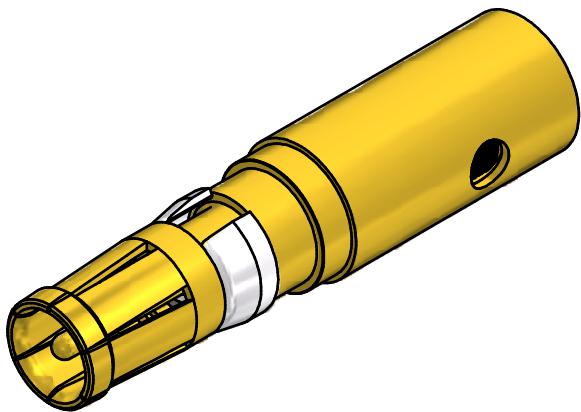
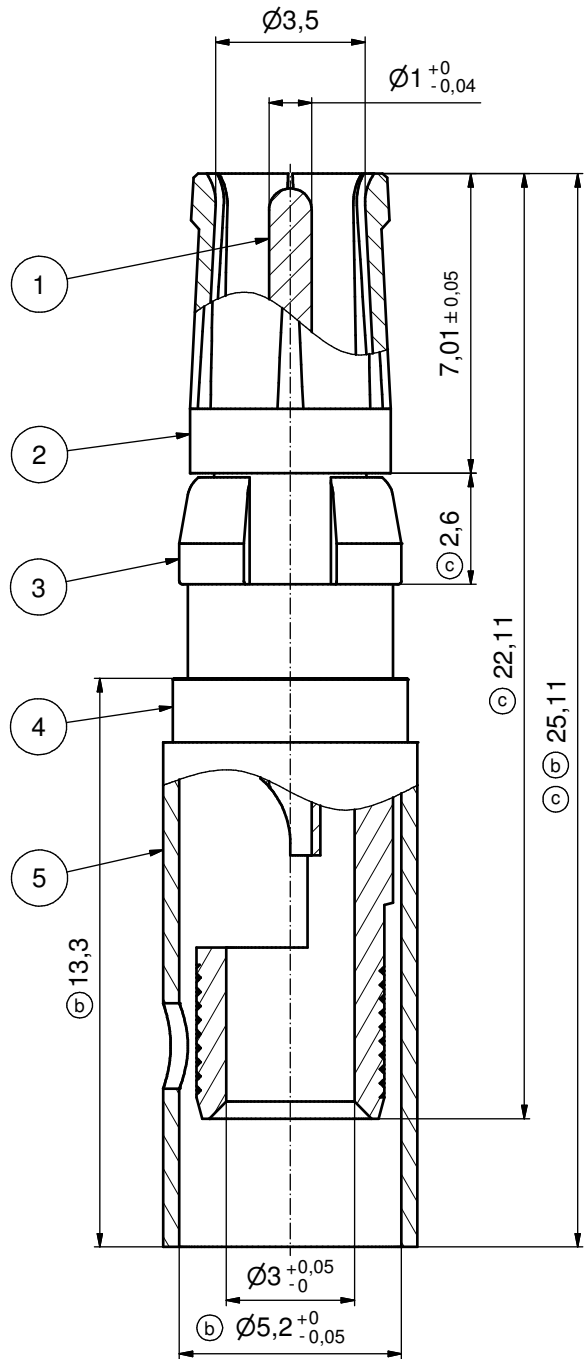
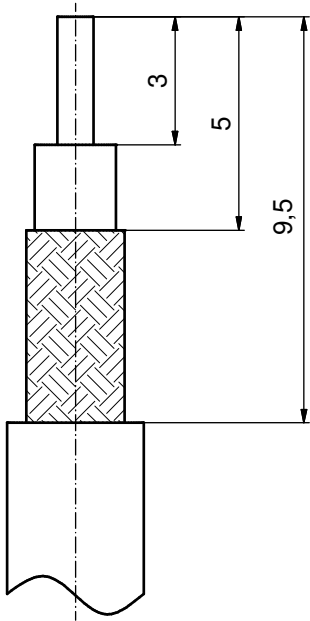


ⓑ STRIPPING DIMENSIONS



ⓒ ASSEMBLY TOOLING:

- 1. CENTER CONTACT:
SOLDERED
- 2. OUTER CONDUCTOR:
SOLDERED OR CRIMPED
USE CRIMP TOOL: 360X10519X
WITH TOOL INSERT: 360X11029X
INSERT CAVITY A: HEX 5.41 / .213" ⓓ

Part no.	Finish Pos.1	Finish Pos.2	Finish Pos.3	Finish Pos. 4/5
132J20049X	50µin HARD GOLD over min. 50µin NICKEL	30µin HARD GOLD over min. 50µin NICKEL	NICKEL PLATED	GOLD FLASH over NICKEL
132A20049X	GOLD FLASH over NICKEL	GOLD FLASH over NICKEL	NICKEL PLATED	GOLD FLASH over NICKEL

Directive 2002/95/EC RoHS compliant

THIS DRAWING MAY NOT BE COPIED OR REPRODUCED IN ANY WAY, AND MAY NOT BE PASSED ON TO A THIRD PARTY WITHOUT WRITTEN PERMISSION. OWNERSHIP AND COPYRIGHT OF CONEC GmbH DO NOT ALTER CAD DRAWING BY HAND	tolerance			dim. in mm	scale: 8:1
	date				material: COPPER ALLOY (Pos. 1 - 5)
	name			title: COAXIAL CONTACT SOCKET 50 OHM	
	drawn 27.04.00 A. Mickenbecker			inner conductor for solder termination	
	appd. 27.04.00 E. Mickenbecker			outer conductor for solder or crimp termination	
1 x d	Ä4764	24.05.2013	K.H.	norm	dwg no: 13K2A029A
5 x c	Ä4538	13.11.12	Lehmen	d-old	DIN-A3
1 x b	Ä2535	18.07.06	Lehmen		sh: 1
a	Original				part no: see table
rev.	description	date	name		