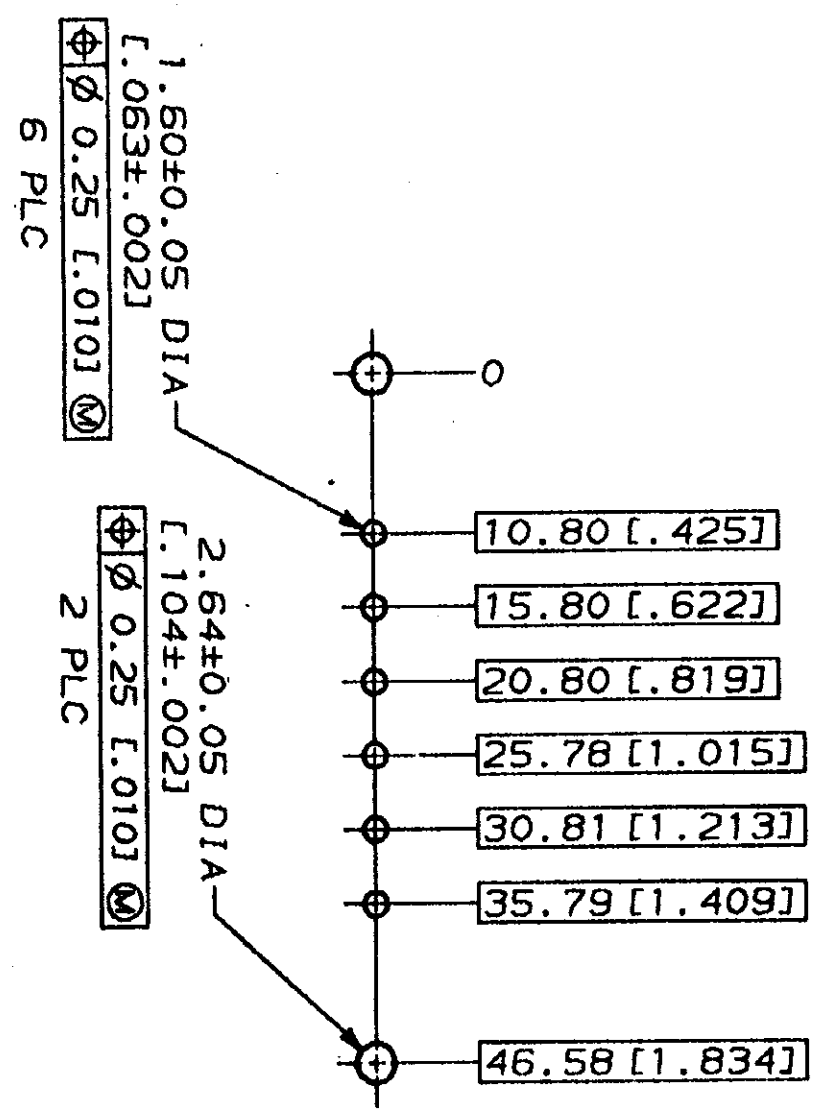
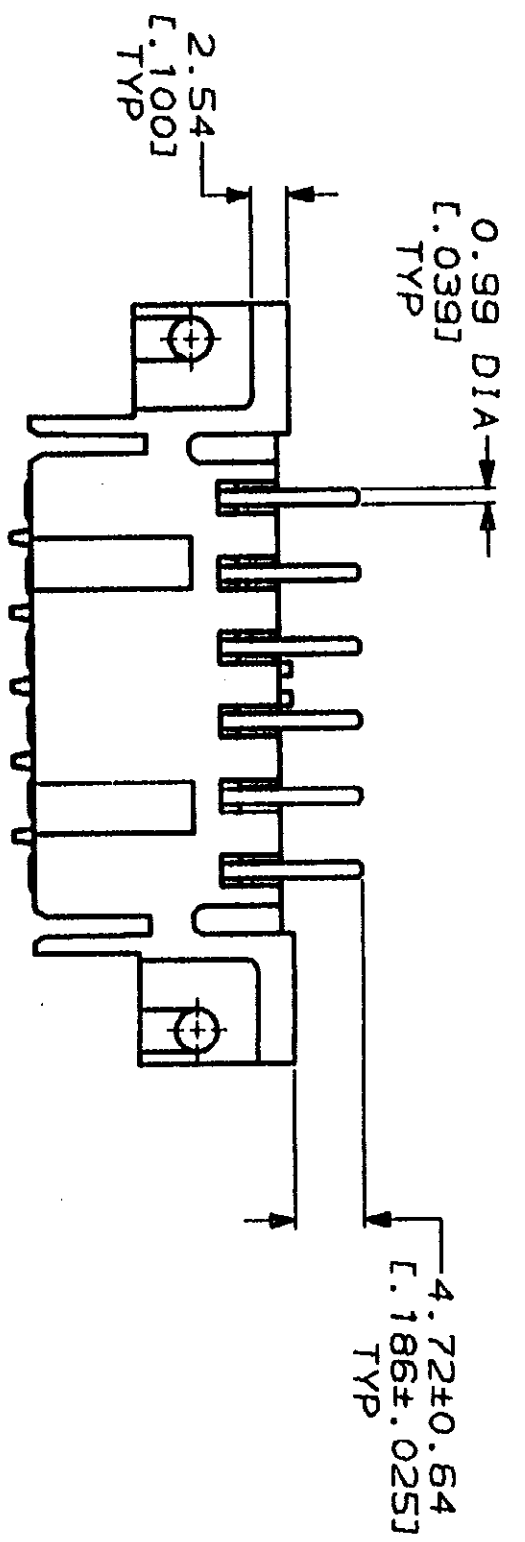
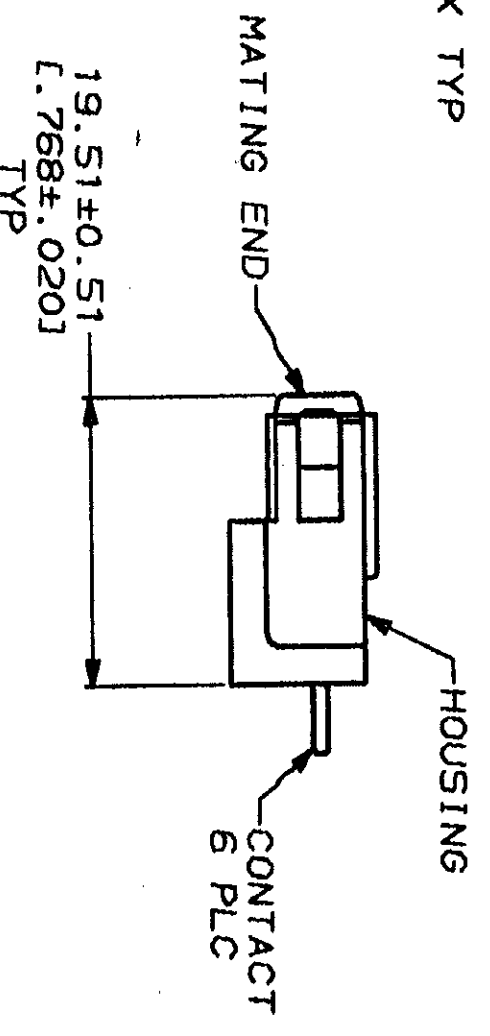
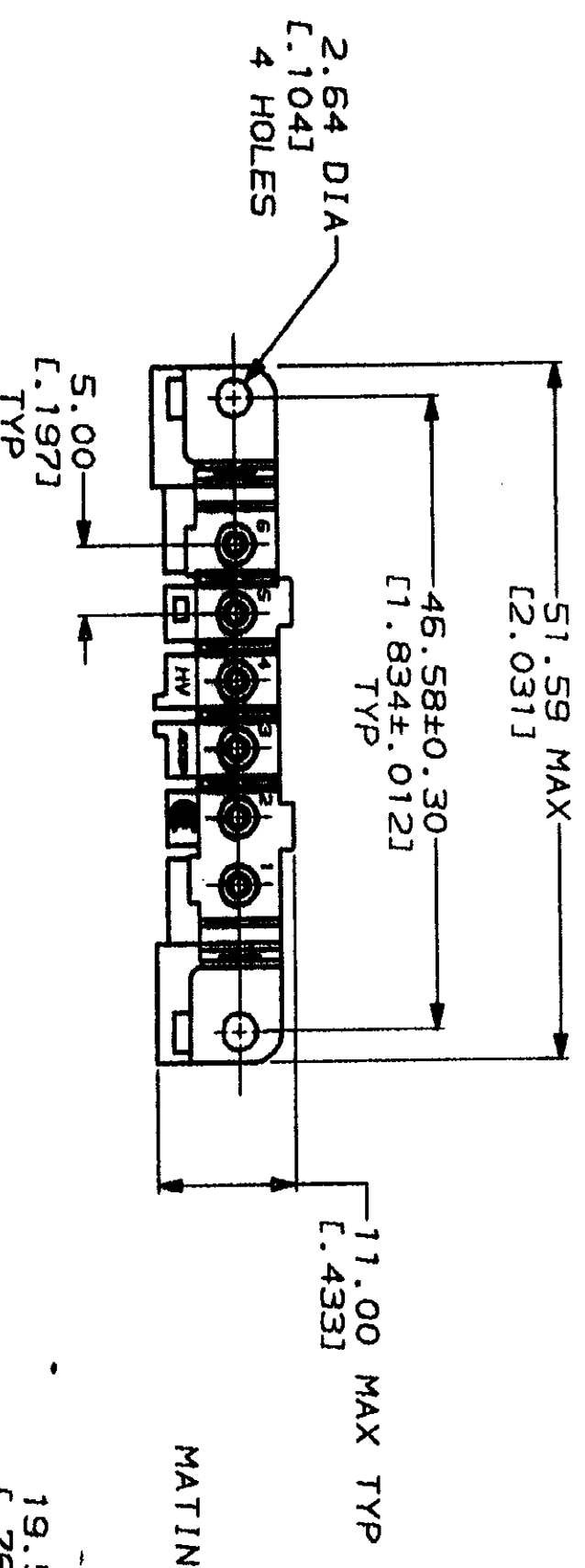


REV	LOC	DISC	ZONE	LTR	DESCRIPTION	DATE	APPD
1	BD	37	H		REDRAWN WITHOUT CHANGE		

REV	DATE	APPD



RECOMMENDED PC BOARD LAYOUT



- 1 NYLON, RED.
- 2 PHOSPHOR BRONZE.
- 3 3.81µm [0.000150] MIN TIN-LEAD OVER 1.27µm [0.000050] MIN NICKEL.
- 4 0.76µm [0.000030] MIN GOLD FOR A LENGTH OF 5.08 [0.200] MIN FROM MATING END, 3.81µm [0.000150] MIN TIN-LEAD FOR A LENGTH OF 5.35 [0.211] MIN FROM OPPOSITE END, BOTH OVER 1.27µm [0.000050] MIN NICKEL.

DO NOT SCALE PRINT. DIMENSIONS SPECIFIED UNLESS SPECIFIED OTHERWISE IN mm [INCHES] TOLERANCES IN mm [INCHES] 2 PLC DEC ± 0.25 [0.010] 3 PLC DEC ± . . .		DR 08/07/92 L. SIPE	AMP Incorporated Harrisburg, PA 17105-9608	CONTACT FINISH	207611-3
MATERIAL HOUSING: 1 CONTACTS: 2		CHK 8-25-92 R. STONE		CONTACT FINISH	207611-1
MATERIAL HOUSING: 1 CONTACTS: 2		APPD 8-25-92 A. TRAVIS	NAME	SOCKET HEADER ASSEMBLY, 6 POSN, IN-LINE, METRIMATE	
CONTACTS: SEE TABLE		APPD 8-25-92 C. RICHIE	SIZE	CASE CODE	DRAWING NO
CONTACTS: SEE TABLE		PRODUCT SPEC	SCALE	00779	©-207611
CONTACTS: SEE TABLE		APPLICATION SPEC	SCALE	2:1	
CONTACTS: SEE TABLE		WEIGHT	CUSTOMER DRAWING		