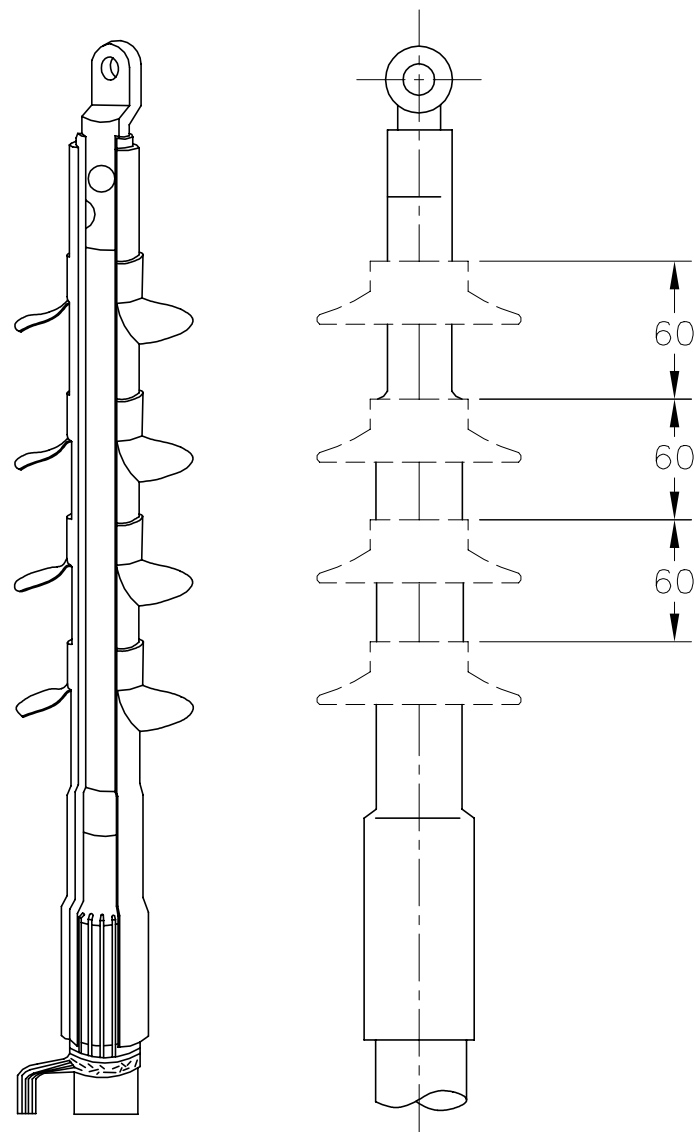


P	LTR	DESCRIPTION	DATE	DWN	APVD
1		NEW DRAWING	12MAY2020	KR	JV

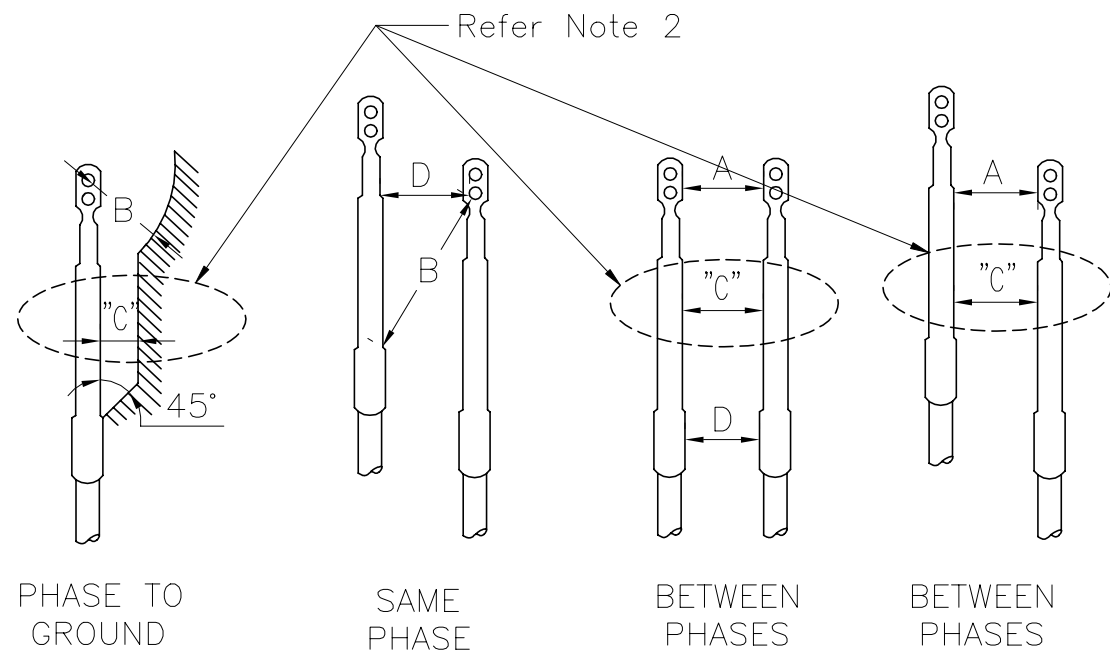


5/8 kV						
OUTDOOR/ INDOOR KIT	CONDUCTOR SIZE 5 kV	CONDUCTOR SIZE 8 kV	INSULATION DIAMETER MIN.	INSULATION DIAMETER MAX.	JACKET O.D. (MAX)	CREEPAGE (mm)
HVT-Z-80-G-SG						
HVT-Z-81-G-SG	#4-1/0 AWG		15	24	30	340
HVT-Z-82-G-SG	2/0 AWG - 350 kcmil		20	32	38	340
HVT-Z-83-G-SG	400-10000 kcmil		28	44	53	340
HVT-Z-84-G-SG	1250-25000 kcmil		41	62	70	340
15 kV						
OUTDOOR KIT	CONDUCTOR SIZE		INSULATION DIAMETER MIN.	INSULATION DIAMETER MAX.	JACKET O.D. (MAX)	CREEPAGE (mm)
HVT-Z-151-SG	#4-1/0 AWG		15	24	30	420
HVT-Z-152-SG	2/0 AWG - 350 kcmil		20	32	38	420
HVT-Z-153-SG	400-10000 kcmil		28	44	53	420
HVT-Z-154-SG	1250-25000 kcmil		41	62	70	420
25 kV/ 35 kV						
OUTDOOR KIT	CONDUCTOR SIZE (25 kV)	CONDUCTOR SIZE (35 kV)	INSULATION DIAMETER MIN.	INSULATION DIAMETER MAX.	JACKET O.D. (MAX)	CREEPAGE (mm)
HVT-Z-252/352-SG	#2AWG-250 kcmil	#1-1/0 AWG	20	32	38	900
HVT-Z-253/353-SG	300-750 kcmil	2/0AWG-500 kcmil	28	44	53	900
HVT-Z-254/354-SG	1000-2000 kcmil	750-1750 kcmil	44	62	70	900

MINIMUM CLEARANCE (INCHES/MILIMETERS)

BIL (kV)	A	B	C	D
96 (5-8 kV)	6.5 (160)	3.5 (90)	1.2 (30)	0.8 (20)
110 (15 kV)	7.0 (175)	4.0 (100)	1.4 (35)	0.9 (23)
150 (25 kV)	9.0 (225)	6.0 (150)	1.6 (40)	1.0 (25)
200 (35 kV)	13.0 (325)	9.0 (225)	2.0 (50)	1.4 (35)

- Value are based on nominal operating conditions. Humid or poorly ventilated environments may require additional air clearance.
- For skirted, outdoor terminations, the value for "c" is equal to the distance from the edge of one skirt to another or from a skirt to ground



THIS DRAWING IS A CONTROLLED DOCUMENT.		DWN RAGHAVENDRA K. 12MAY2020	TE Connectivity	
		CHK VALENCIA, JORDI 12MAY2020		
		APVD RIVA, CARLOS 12MAY2020	NAME HVT-Z SHRINKABLE TERMINATIONS	
DIMENSIONS: mm		TOLERANCES UNLESS OTHERWISE SPECIFIED:		SIZE A3
		0 PLC ± - 1 PLC ± - 2 PLC ± - 3 PLC ± - 4 PLC ± - ANGLES ± -		CAGE CODE 00779
MATERIAL -		FINISH -		DRAWING NO HVT-Z
		WEIGHT		RESTRICTED TO -
CUSTOMER DRAWING			SCALE NTS	SHEET 1 OF 1
			REV 1	