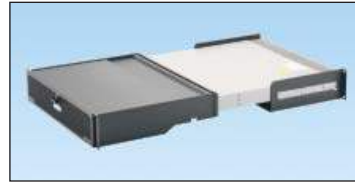


# CDE2 Modular ToR Switch Inlet Duct for Net-Access™ S-Type Cabinets

## specifications

The inlet duct shall be designed using CFD modeling and actual thermal lab verification, and shall be compatible with Cisco^ Nexus N2K and Catalyst 4948E. The inlet duct shall optimize thermal performance by channeling air directly from the cold aisle to the switch inlet decreasing operating temperature. The passive inlet duct shall enable higher temperature set points in the data center resulting in reduced energy costs. The modular duct shall be capable of being installed in retro-fit applications and allow access to fan and power supply modules without disrupting existing in-cabinet equipment and cabling.



## technical information

**Overall dimensions:** CDE2: 29.0"L x 19.0"W x 3.5"H (737mm x 449mm x 88mm)

## key features and benefits

<b>Provides a cool air path to the switch</b>	Increases energy efficiency in ToR applications and allows high density server applications
<b>Inlet duct for uniform and low impedance flow distribution within switch:</b> N2K-C2148T-1GE, N2K-C2224TP-1GE, N2K-C2232PP-10GE, N2K-C2248TP-1GE, WS-C4948E-F, WS-C4948E-F-S, and WS-C4948E-F-E	Verified interoperability for increased network reliability
<b>Passive inlet duct for cool air to the switch</b>	No additional moving parts or power required for a more reliable, efficient, economical and environmentally friendly system
<b>Day one or two installation</b>	Eliminates the requirement to replace or disturb existing cabinets, equipment and infrastructure for lower capital expenditures and minimized risk
<b>Enables installation in 19 inch 4 post racks and cabinets</b>	Can be used with existing infrastructure for lower capital expenditures
<b>Allows for installation in cabinets with mounting depths from 24 – 30" (610 – 762mm)</b>	Allows greater network flexibility and reliability
<b>Allows access to power supplies and fan blades</b>	Allows ease of maintenance
<b>Support bracket supports switch during installation</b>	Allows single person ease of switch installation

## applications

Top of Rack (ToR) switches, such as the Cisco^ Nexus 2000 series, are designed to meet the server-access networking requirements of the virtualized data center. When deployed within server cabinets or racks, the modular duct provides a cool air

path to the air intakes of the switch. By providing a path for cool air to the switch, data center temperature set points can be raised – resulting in higher energy efficiencies and lower operating costs.

^Cisco is a registered trademark of Cisco Technology, Inc.

### Inlet Duct for ToR Switching Applications

Cisco^ Inlet Duct  
N2K-C2148T-1GE,  
N2K-C2224TP-1GE,  
N2K-C2232PP-10GE,  
N2K-C2248TP-1GE,  
WS-C4948E-F,  
WS-C4948E-F-S, and  
WS-C4948E-F-E: CDE2

### Net-Access™ S-Type Cabinets for use in Hot Aisle/Cold Aisle Applications

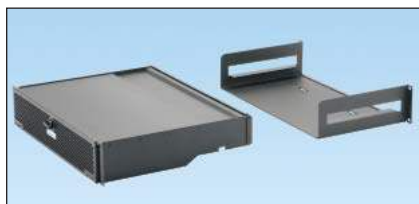
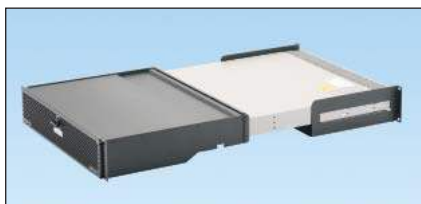
Single front perforated door, split perforated rear doors

600mm W x 42 RU x 1067mm D:	S621*^†
600mm W x 45 RU x 1067mm D:	S651*^†
600mm W x 48 RU x 1067mm D:	S681*^†
600mm W x 42 RU x 1219mm D:	S622*^†
600mm W x 45 RU x 1219mm D:	S652*^†
600mm W x 48 RU x 1219mm D:	S682*^†
700mm W x 42 RU x 1067mm D:	S721*^
700mm W x 45 RU x 1067mm D:	S751*^
700mm W x 48 RU x 1067mm D:	S781*^
700mm W x 42 RU x 1219mm D:	S722*^
700mm W x 45 RU x 1219mm D:	S752*^
700mm W x 48 RU x 1219mm D:	S782*^
800mm W x 42 RU x 1067mm D:	S821*^
800mm W x 45 RU x 1067mm D:	S851*^††
800mm W x 48 RU x 1067mm D:	S881*^
800mm W x 42 RU x 1219mm D:	S822*^
800mm W x 45 RU x 1219mm D:	S852*^
800mm W x 48 RU x 1219mm D:	S882*^

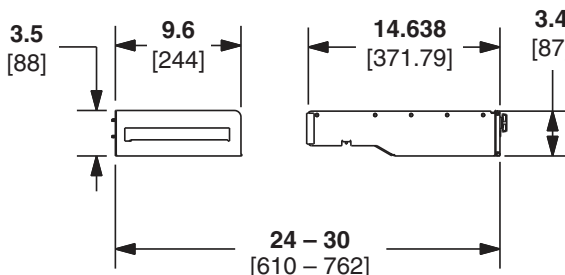
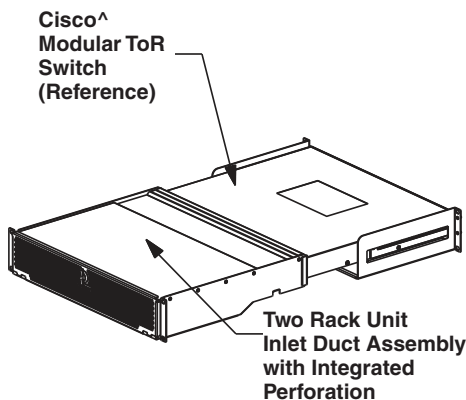
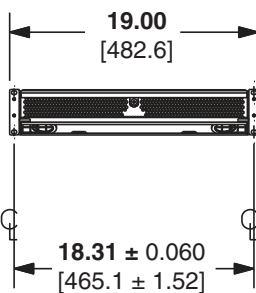
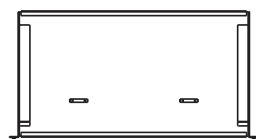
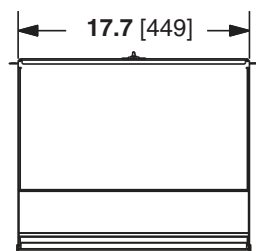
### Accessories

D-ring kit for full length POU bracket 25mm (1 inch) deep:	S1DR
D-ring kit for full length POU bracket 60mm (2.4 inch) deep:	S2DR
L-ring kit for full length POU bracket 40mm (1.6 inch) deep:	S1LR
L-ring kit for full length POU bracket 70mm (2.8 inch) deep:	S2LR

# CDE2 Modular ToR Switch Inlet Duct for Net-Access™ S-Type Cabinets



CDE2



## Accessories

<b>45 RU 1070mm split/hinged side panel – black:</b>	S51SPH
<b>45 RU 1070mm split/hinged side panel – white:</b>	S51SPHW
<b>45 RU 1200mm split/hinged side panel – black:</b>	S52SPH
<b>45 RU 1200mm split/hinged side panel – white:</b>	S52SPHW
<b>Casters:</b>	SCSTR4
<b>45 RU finger kit – 100mm (4") long:</b>	SN15F
<b>45 RU finger kit – 150mm (6") long:</b>	SN25F
<b>Cool Boot® Cabinet Top Air Sealing Fitting for 6.5 x 6.5 cabinet top opening:</b>	CTGN6X6
<b>Cool Boot® Cabinet Top Air Sealing Fitting for 3.5 x 5 cabinet top opening:</b>	CTGN3X5
<b>Cool Boot® Cabinet Top Air Sealing Fitting for 1 x 5 cabinet top opening:</b>	CTGN1X5
<b>Cabinet top cable protection bezel for 6.5 x 6.5 cabinet top opening:</b>	CTCN6X6
<b>Cabinet top cover and cable protection bezel for 3.5 x 5 cabinet top opening:</b>	CTCN3X5
<b>Cabinet top cover and cable protection bezel for 1 x 5 cabinet top opening:</b>	CTCN1X5

\*Indicates Net-Access™ S-Type Cabinet. Replace \* with: 1 = 1 side panel, 2 = 2 side panels, or 9 = no side panels.

^Indicates optional colors. Replace ^ with: B = Black or W = White.

†Add suffix P to the end of the part number for Zero RU QuickNet™ Vertical Patching Rails.

††Add suffix F to the end of the part number for cable management.

^Cisco is a registered trademark of Cisco Technology, Inc.

Dimensions are in inches. [Dimensions in brackets are metric].

## WORLDWIDE SUBSIDIARIES AND SALES OFFICES

PANDUIT CANADA  
Markham, Ontario  
cs-cdn@panduit.com  
Phone: 800.777.3300

PANDUIT EUROPE LTD.  
London, UK  
cs-emea@panduit.com  
Phone: 44.20.8601.7200

PANDUIT SINGAPORE PTE. LTD.  
Republic of Singapore  
cs-ap@panduit.com  
Phone: 65.6305.7575

PANDUIT JAPAN  
Tokyo, Japan  
cs-japan@panduit.com  
Phone: 81.3.6863.6000

PANDUIT LATIN AMERICA  
Guadalajara, Mexico  
cs-la@panduit.com  
Phone: 52.33.3777.6000

PANDUIT AUSTRALIA PTY. LTD.  
Victoria, Australia  
cs-aus@panduit.com  
Phone: 61.3.9794.9020

For a copy of Panduit product warranties, log on to [www.panduit.com/warranty](http://www.panduit.com/warranty)

For more information

Visit us at [www.panduit.com](http://www.panduit.com)

Contact Customer Service by email: [cs@panduit.com](mailto:cs@panduit.com)  
or by phone: 800.777.3300 and reference RKSP105



©2012 Panduit Corp.  
ALL RIGHTS RESERVED.  
RKSP105--WW-ENG  
10/2012