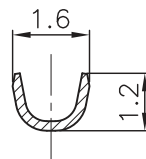
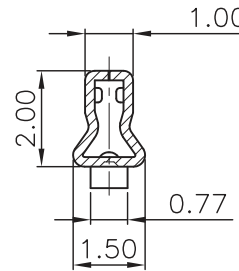


Section:A-A



Section:B-B



Section:C-C

TECHNICAL CHARACTERISTICS

MATERIAL
CONTACT MATERIAL: COPPER ALLOY
CONTACT TYPE: STAMPED
CONTACT PLATING: TIN
QUALITY CLASS: 25 MATING CYCLES

ENVIRONMENTAL
OPERATING TEMPERATURE: -25°C UP TO +85°C
COMPLIANCE: LEAD FREE AND ROHS

ELECTRICAL
CURRENT RATING: 2 A
WORKING VOLTAGE: 125 VAC
CONTACT RESISTANCE: 20 mOHM MAX

WIRE DIMENSION
AWG: AWG 24 - 28

PACKAGING
10KPCS REEL

RoHS Compliant

PROJECTION:



GENERAL TOLERANCE

.X = ± 0.2

.XX = ± 0.15



APPROVAL: BBu

UNIT: MM

SCALE:

SHEET: 1/3

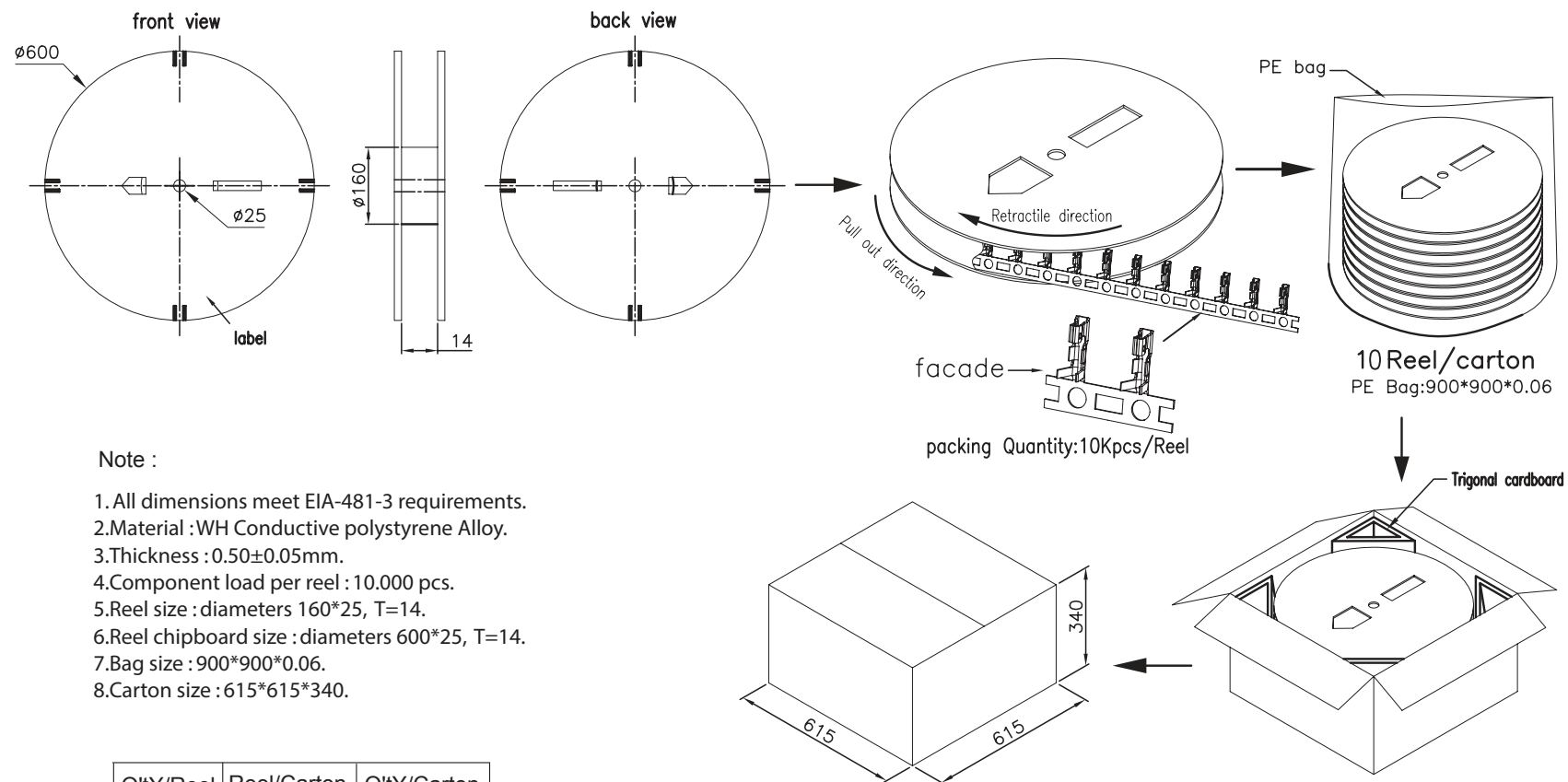
DRAW: AK

DESCRIPTION: 2.00 MM FEMALE CRIMP TERMINAL

WERI PART NO: 620 001 137 22

SIZE

A4



Q'tY/Reel	Reel/Carton	Q'tY/Carton
10Kpcs	10	100Kpcs

RoHS Compliant				<div>PROJECTION:</div> <div></div>	<div>GENERAL TOLERANCE</div> <div>.X = \pm 0.2</div> <div>.XX = \pm 0.15</div>	<div></div>		
G								
F								
E								
D								
C				APPROVAL: BBu	UNIT: MM	DESCRIPTION: 2.00 MM FEMALE CRIMP TERMINAL		SIZE A4
B					SCALE:			
A					SHEET: 2/3			
REV	DATE	FILE	BY		DRAW: MIKE	WERI PART NO: 620 001 137 22		

