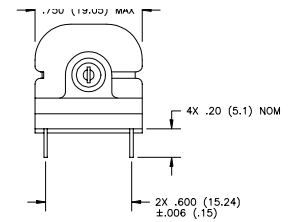
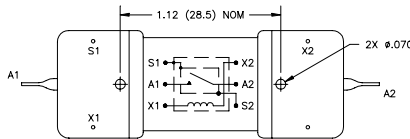
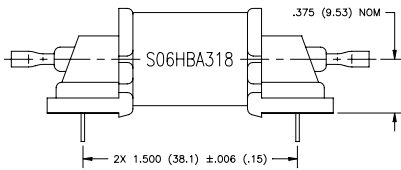
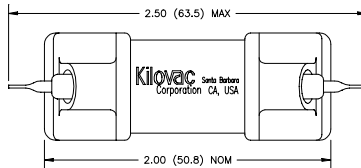
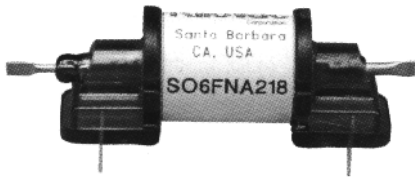


Kilovac S06HBA318 No Load Switching



1. Dimensions in parentheses are in millimeters.
2. Pin dimension are .024 (.61) nom. square.
3. Recommended P.C.B. holes: .043 (1.0)

Features:

- 8 amp continuous carry @ 7 Kvac
- Vacuum dielectric for power switching low current loads
- 100 million cycle mechanical life
- Carries 10A at DC; 6 amps at 30 MHz

PRODUCT SPECIFICATIONS

| Part Number | Units | S06HBA318 |
|-------------------------------------|----------|-------------|
| Contact Arrangement | | SPST-NO |
| Contact Form | | A |
| Voltage Ratings | kV Peak | |
| Between Contacts | | 7 |
| Contacts to Coil | | 7 |
| Contacts to Screen | | 7 |
| Coil to Screen | | .5 |
| Carry Current , Maximum | Amps | |
| @ DC | | 10 |
| @ 30 MHz | | 6 |
| Contact Resistance | mohm | 50 |
| Contact Capacitance | pF | |
| Between Open Contacts | | 0.4 |
| Closed Contacts to Ground | | 5 |
| Operate Time [4] | ms | 2 |
| Release Time [4] | ms | 1 |
| Shock, 11 ms 1/2 Sine (Peak) | G's | 100 |
| Vibration | G's Peak | 20 |
| | Hz | 10 to 500 |
| Temperature Range | °C | |
| Operating | | -40 to +85 |
| Storage | | -55 to +125 |
| Initial Insulation Resistance | GigaOhms | 10 |
| Mechanical Life | Cycles | 100 Million |
| Weight, Nominal | oz. | 0.85 |

4. Operate and release times are with external diode suppressions, @ 25°C.

COIL DATA

| | S06HBA318 | Unit |
|------------------------|-----------|-------|
| Volts, Nominal | 24 | Vdc |
| Maximum Voltage | 31 | |
| Pickup, Maximum | 15 | |
| Dropout, Maximum | 2 | |
| Coil Resistance | 1,000 | Ohms |
| RF Screen, Inner | S1 | Pin # |
| RF Screen, Outer | S2 | |
| EM Shield | N/A | |