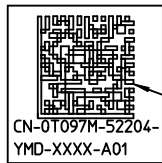
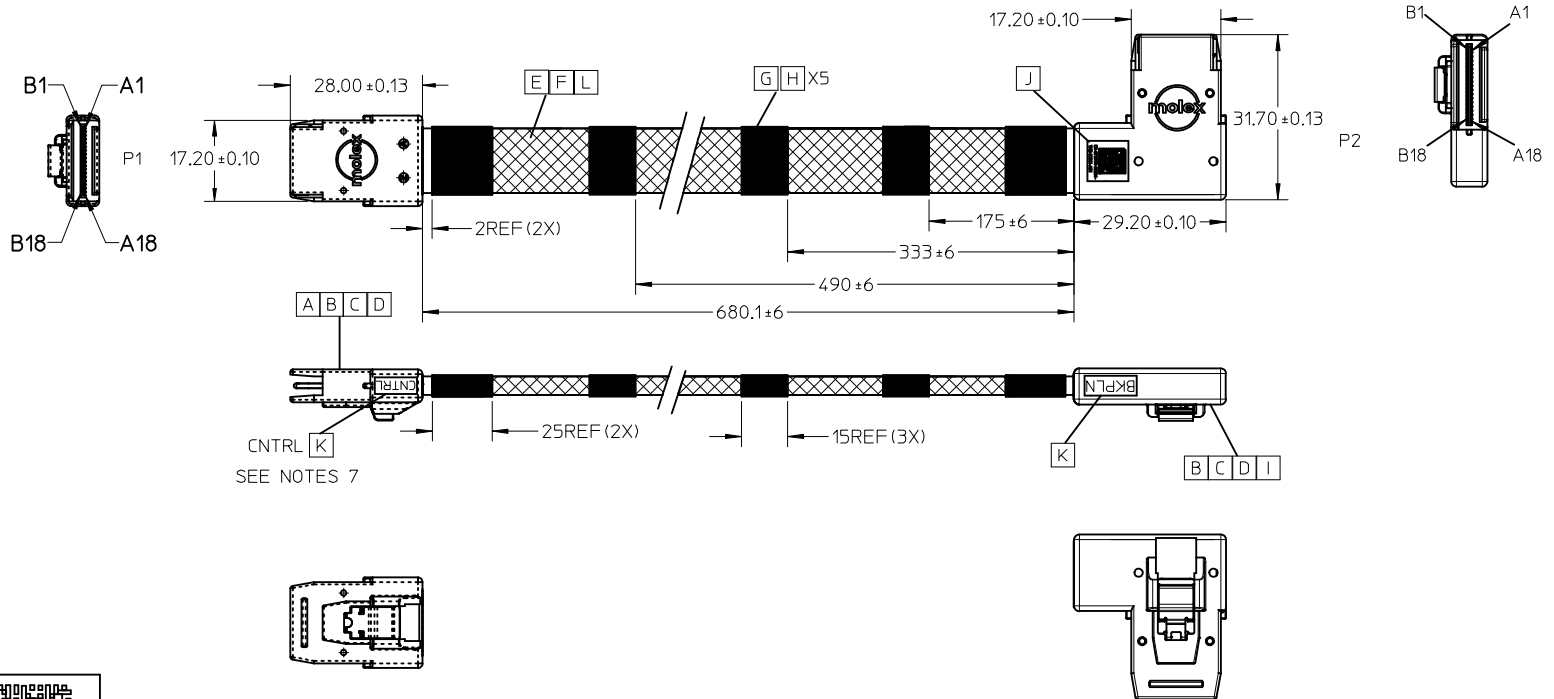


REVISIONS				
EC NO	DATE	REV	DESCRIPTION	CHANGER
NA	2010/06/10	A	INITIAL RELEASE	LUCKY
CY11-5360	2010/08/27	B	CHANGE CUSTOMER VERSION FROM 'A00' TO 'A01'(LABEL)	LUCKY
CY11-6472	2011/04/13	C	CHANGE THE BRAID SLEEVE FROM OD:9.5MM TO 7.0MM	LF Rao

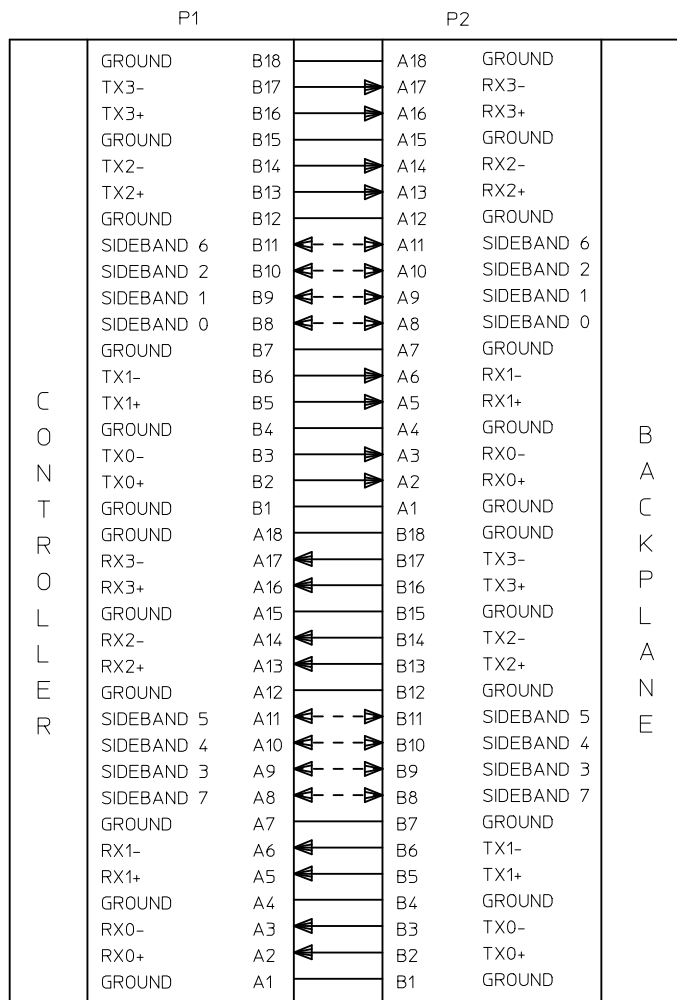


READING AS: CN0T097M52204YMDXXXXA01

LABEL FORMART DETAIL

IPASS™ IS A TRADEMARK OF MOLEX

ENTER DESCRIPTION EC NO: CPG2013-0061 DRWN: ZYYU 2012/07/11 CHKD: SALLY CUI 2012/07/11 APPR: CLAN01 2012/07/11	QUALITY SYMBOLS	GENERAL TOLERANCES (UNLESS SPECIFIED)		DIMENSION STYLE MM ONLY		SCALE ---	DESIGN UNITS METRIC	THIRD ANGLE PROJECTION
	$\nabla_F = 0$	4 PLACES	mm	INCH	DRAWN BY ZYYU	DATE 2012/07/11	TITLE 36CKTIPASS RT ANGLE RT EXIT TO ST .680M	
	$\nabla_{F/2} = 0$	3 PLACES	± ---	± ---	CHECKED BY W. LUCKY	DATE 2012/07/11	<b>molex</b>	
	$\nabla_{F/4} = 0$	2 PLACES	± ---	± ---	APPROVED BY CLAN01	DATE 2012/07/11		
		1 PLACE	± ---	± ---	MATERIAL NO. 1110964004		DOCUMENT NO. SD-111096-4004	SHEET NO. 1 OF 3
		0 PLACE	± ---	± ---	DRAFT WHERE APPLICABLE MUST REMAIN WITHIN DIMENSIONS		THIS DRAWING CONTAINS INFORMATION THAT IS PROPRIETARY TO MOLEX INCORPORATED AND SHOULD NOT BE USED WITHOUT WRITTEN PERMISSION	



NOTE:

1. ALL SIGNAL GROUNDS ARE BUSSED IN PCB.

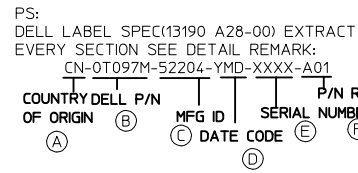
TM  
IPASS IS A TRADEMARK OF MOLEX.

ITEM	DESCRIPTION	L (mm)	QTY.
L	8C*30AWG:TS:GY:P=1.0MM:UL2651	710REF	1PCS
K	Blank label 5x10mm Thermal Transfer		2PCS
J	Blank Label 0.375"*0.375" Brady# B-423		1PCS
I	PCBfor lpass 36CKT R/A Right FR406		1PCS
H	HST F 10MM 125C (UL) BLK	A/R	5PCS
G	KUNJIE ACETATE CLOTH TAPE 12MM BLACK	A/R	5PCS
F	Braid sleeving OD:7.0mm Black HF	680REF	1PCS
E	IP*30AWG:SHLD:FEP:BU:0.90*2.21MM:Twin-ax	710REF	8PCS
D	PE G812 LDPE NATURAL		A/R
C	lpass Latach(Local vender)		2PCS
B	PBT POLYESTER 30% GF BLACK UL94V-0		A/R
A	Raw PCB 172010286+ HF Solder Wire		2PCS

ENTER DESCRIPTION EC NO: CPG2013-0061 DRWN:ZYU 2012/07/11 CHKD:SALLY CUI 2012/07/11 APPR:CLAN01 2012/07/11	QUALITY SYMBOLS $\nabla_A = 0$ $\nabla_G = 0$ $\nabla_P = 0$	GENERAL TOLERANCES (UNLESS SPECIFIED) mm INCH 4 PLACES ± --- ± --- 3 PLACES ± --- ± --- 2 PLACES ± --- ± --- 1 PLACE ± --- ± --- 0 PLACE ± --- ± --- ANGULAR ± --- °	DIMENSION STYLE MM ONLY DRAWN BY: ZYU DATE: 2012/07/11 CHECKED BY: W. LUCKY DATE: 2012/07/11 APPROVED BY: CLAN01 DATE: 2012/07/11	SCALE: --- DESIGN UNITS: METRIC THIRD ANGLE PROJECTION	TITLE: 36CKTIPASS RT ANGLE RT EXIT TO ST .680M <b>molex</b>
	DRAFT WHERE APPLICABLE MUST REMAIN WITHIN DIMENSIONS	MATERIAL NO.: 1110964004 DOCUMENT NO.: SD-111096-4004 SHEET NO.: 2 OF 3	THIS DRAWING CONTAINS INFORMATION THAT IS PROPRIETARY TO MOLEX INCORPORATED AND SHOULD NOT BE USED WITHOUT WRITTEN PERMISSION		

NOTES


1. IPASS INNERMOLD WITH PE RESIN;  
IPASS OUTERMOLD WITH PBT RESIN;
2. THIS PRODUCT MUST MEET EU CHEMICAL SUBSTANCE SPECIFICATION FOR PRODUCTS(EU 2002/95/EC RoHS).
3. FOR IPASS END ASSEMBLY PLS REFERS TO E-74562-010 FOR DETAIL.
4. THE PRODUCT ELECTRICAL PERFORMANCE AND MECHANICAL PERFORMANCE REFER TO SAS 2.0 INDUSTRIAL STANDARD
5. MECHANICAL PERFORMANCE REFER TO PS-75783-001.
6. RECOMMENDED MINIMUM BEND RADIUS IS 28MM.
7. TEXT NEED USE FONT ARIAL AND THE TEXT SHOULD BE 3MM MIN.
8. LABEL DETAIL
  - 8.1 FOR LABEL DETAIL PLEASE REFER TO DELL SPECIFICATION NUMBER:  
13190 REV. A28-00 TYPE W
  - 8.2 LABEL FORMART:  
CN-0T097M-52204-YMD-XXXX-A01
  - 8.3.TEXT NEED USE FONT VERDANA AND THE TEXT SHOULD BE 3PT MINIMUM.
9. CABLES-REFERENCE DOCUMENTS  
DN362 SPEC,ENG,STD,DFE  
6T198 SPEC,DFE, RESTRICTED-MTL  
13190 SPEC, SPLR, BRCD, LBL.(USE IF SHIPPED DIRECTLY TO DELL)  
ENG0000116 DOC, PROC, CABLE, ENG  
ENG0000117 SPEC, PRCS, QUAL, CBL, ELEC  
ENG0000121 DOC, PROC, PPAP, CBL, ENG  
ASME Y14.5M-1994 DIMENSIONING AND TOLERANCING



- (A) ORIGINAL COUNTRY
- (B) DELL P/N
- (C) MFG ID
- (D) DATE CODE
  - 1.FIRST CHARACTER IS YEAR CODE: LAST NUMBER OF THE YEAR.
  - 2.SECOND CHARACTER IS MONTH CODE. SEE CHART.

JAN	FEB	MAR	APR	MAY	JUN	JUL	AUG	SEP	OCT	NOV	DEC
1	2	3	4	5	6	7	8	9	A	B	C

3.3RD CHARACTER IS DAY CODE: 1ST -- 9TH = 1 -- 9 AND 10ST -- 31ST = A -- V
- (E) SERIAL NUMBER.  
XXXX (DELL SERIAL NUMBER): SUPPLIERS WILL BE ALLOWED THE USE OF CHARACTERS 0-9, A-OIN THE FIRST POSITION OF THE SEQUENCE NUMBER, WITH NO RESTRICTIONS ON THE 2NDTHROUGH 4TH POSITIONS PROVIDED THAT EACH SEQUENCE NUMBER IS INDEED UNIQUE.
- (F) P/N REV

ENTER DESCRIPTION EC NO: CPG2013-0061 DRWN:ZYU 2012/07/11 CHKD:SALLY CUI 2012/07/11 APPR:CLAN01 2012/07/11	QUALITY SYMBOLS $F_A=0$ $F_G=0$ $F_P=0$	GENERAL TOLERANCES (UNLESS SPECIFIED)		DIMENSION STYLE MM ONLY		SCALE ---	DESIGN UNITS METRIC	THIRD ANGLE PROJECTION		
			mm	INCH	DRAWN BY ZYU	DATE 2012/07/11	TITLE 36CKTIPASS RT ANGLE RT EXIT TO ST .680M			
		4 PLACES	± ---	± ---	CHECKED BY W. LUCKY	DATE 2012/07/11				
		3 PLACES	± ---	± ---	APPROVED BY CLAN01	DATE 2012/07/11				
2 PLACES	± ---	± ---	MATERIAL NO. 1110964004		DOCUMENT NO. SD-111096-4004		SHEET NO. 3 OF 3			
1 PLACE	± ---	± ---	DRAFT WHERE APPLICABLE MUST REMAIN WITHIN DIMENSIONS		THIS DRAWING CONTAINS INFORMATION THAT IS PROPRIETARY TO MOLEX INCORPORATED AND SHOULD NOT BE USED WITHOUT WRITTEN PERMISSION					
0 PLACE	± ---	± ---	ANGULAR ±---°							