

PART NUMBER	REVISION	DESCRIPTION	FEED TYPE
2151541-1	J	FINE CRIMP HEIGHT ADJUST	MECHANICAL
2151541-2	J	FINE CRIMP HEIGHT ADJUST	PNEUMATIC
3-2151541-2	J	FINE CRIMP HEIGHT ADJUST	DOUBLE ACTING PNEUMATIC WITH SENSORS
7-2151541-1	J	MECHANICAL AND CRIMP TOOLING KIT	MECHANICAL
7-2151541-2	J	PNEUMATIC AND CRIMP TOOLING KIT	PNEUMATIC
7-2151541-7	C	CRIMP TOOLING KIT	-

ATLANTIC VERSION TERMINATOR INTERFACE ADAPTER



APPLICATOR DATA		
CRIMP	SIZE	TYPE
WIRE	1.27 mm [.050]	F
INSUL	1.83 mm [.072]	O

APPLICATOR INSTRUCTIONS
408-35042

TERMINAL DATA: TE TERMINAL		TE SPECIFICATION	
TERMINAL NAME: MICRO QUADLOK SYSTEM			
WIRE STRIP LENGTH		INSULATION DIAMETER RANGE	
3.05-3.35 mm [.120-.132 IN]		Ø1.15-1.60 mm [.045-.063 IN]	
TERMINAL APPLICATION SPECIFICATION	(A)114-18021		
	(B)114-61024		
TERMINALS APPLIED			
GROUP 1		GROUP 2	
TE TERMINAL	TE TERMINAL	TE TERMINAL	TE TERMINAL
(A) 928999-1	(A) 5-928918-2	(A) 968220-1	(A) 1703296-1
(A) 928999-5	(A) 5-928918-1	(A) 968220-5	(A) 1703296-5
(A) 928999-6	(A) 6-928918-1	(A) 968220-6	(A) 1534116-1
(A) 5-928999-1	(A) 6-928918-2	(A) 5-968220-1	(A) 1534116-2
(A) 5-928999-5	(A) 6-928918-3	(A) 5-968220-5	(A) 5-1534116-1
(A) 5-928999-6	(A) 1394702-1	(A) 5-968220-6	(A) 5-1534116-2
(A) 6-928999-5	(A) 1394702-2	(B) 2005119-1	(A) 1241918-1
(A) 928918-1	(A) 5-1394702-1		
(A) 928918-2	(A) 5-1394702-2		
(A) 1-928918-1	(A) 968893-1		
(A) 1-928918-2	(A) 5-968893-1		

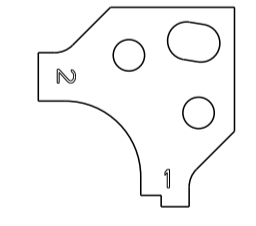
TERMINAL DATA: TE TERMINAL		TE SPECIFICATION	
TERMINAL NAME: MICRO QUADLOK SYSTEM			
WIRE STRIP LENGTH		INSULATION DIAMETER RANGE	
3.05-3.35 mm [.120-.132 IN]		Ø1.15-1.60 mm [.045-.063 IN]	
TERMINAL APPLICATION SPECIFICATION	(A)114-18021		
	(B)114-61024		
TERMINALS APPLIED			
GROUP 1		GROUP 2	
TE TERMINAL	TE TERMINAL	TE TERMINAL	TE TERMINAL
(A) 928999-1	(A) 5-928918-2	(A) 968220-1	(A) 1703296-1
(A) 928999-5	(A) 5-928918-1	(A) 968220-5	(A) 1703296-5
(A) 928999-6	(A) 6-928918-1	(A) 968220-6	(A) 1534116-1
(A) 5-928999-1	(A) 6-928918-2	(A) 5-968220-1	(A) 1534116-2
(A) 5-928999-5	(A) 6-928918-3	(A) 5-968220-5	(A) 5-1534116-1
(A) 5-928999-6	(A) 1394702-1	(A) 5-968220-6	(A) 5-1534116-2
(A) 6-928999-5	(A) 1394702-2		(A) 1241918-1
(A) 928918-1	(A) 5-1394702-1		
(A) 928918-2	(A) 5-1394702-2		
(A) 1-928918-1	(A) 968893-1		
(A) 1-928918-2	(A) 5-968893-1		

WIRE SIZE	CRIMP HEIGHT mm [INCH]	CRIMP HEIGHT REFERENCE SETTING
0.35mm ²	0.82 +/- 0.03 [.032 +/- .001]	9.3
0.25mm ²	0.76 +/- 0.03 [.030 +/- .001]	10.0
0.20mm ²	0.72 +/- 0.03 [.028 +/- .001]	10.4

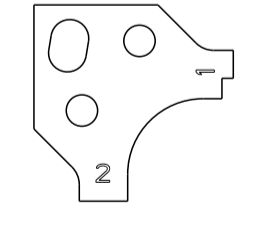
WIRE SIZE	CRIMP HEIGHT mm [INCH]	CRIMP HEIGHT REFERENCE SETTING
0.50mm ²	0.92 +/- 0.03 [.036 +/- .001]	8.3

- RECOMMENDED SPARE PARTS
- REFER TO SUPPLIED INSTRUCTION SHEET FOR CLEANING, LUBRICATION AND STORAGE OF APPLICATOR.
- APPLY PART NUMBER 2-23419-6 LOCTITE TO THREADS OF ITEM 242.
- CRIMP HEIGHT REFERENCE SETTING WAS THE SETTING USED WHEN THE APPLICATOR WAS QUALIFIED AT THE FACTORY. ADJUSTMENT MAY BE NECESSARY WHEN RUNNING APPLICATOR IN THE FIELD.
- REFER TO APPLICATION SPECIFICATION, 114-18021, PAGE 8, NOTE 3 CONCERNING CRIMPING 0.50mm² WIRE.
- 6. UNLESS SPECIFIED OTHERWISE TORQUE VALUES SHALL BE USED PER DOCUMENT, 101-35000.

POSITION THE HOLD DOWN, ITEM 18, IN ORIENTATION 1 FOR GROUP 1 TERMINALS. REFER TO SHEET 2.



POSITION THE HOLD DOWN, ITEM 18, IN ORIENTATION 2 FOR GROUP 2 TERMINALS. REFER TO SHEET 2.



THIS APPLICATOR IS EQUIPPED WITH THE DOUBLE ACTING FEED WITH SENSORS AND IS APPLICATION SPECIFIC. IT DOES NOT REQUIRE ITEMS 49 & 248.

***WARNING**
ON INSTALLATION, SET WIRE DISC TO CRIMP HEIGHT REFERENCE SETTING FOR LARGEST WIRE SIZE. CRIMP HEIGHT REFERENCE SETTINGS GREATER THAN THE VALUE SHOWN MAY CAUSE DAMAGE TO THE CRIMP TOOLING. REFER TO THE INSTRUCTION SHEET FOR PROPER SETUP AND ADJUSTMENTS.

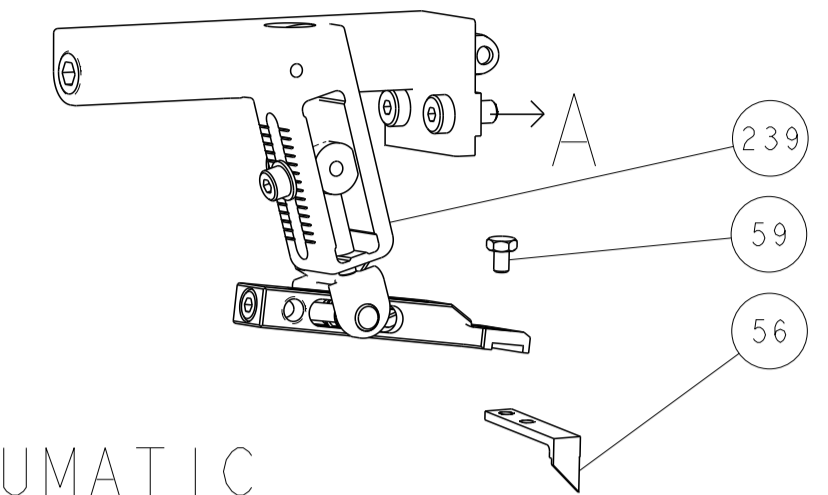
ATLANTIC VERSION
Shown on sheets 1 of 4 & 2 of 4
(Pacific version shown on sheets 3 of 4 & 4 of 4)

LOC	DIST	REVISIONS					
A	66	P	LTN	DESCRIPTION	DATE	DWN	APVD
		G		ECR-19-012198	02AUG2019	FZ	RK
		G1		ECR-20-011856	21AUG2020	FZ	RK
		H		ECR-21-005128	05MAY2021	TB	RK
		J		ECR-21-006572	28JUN2021	JWC	TE

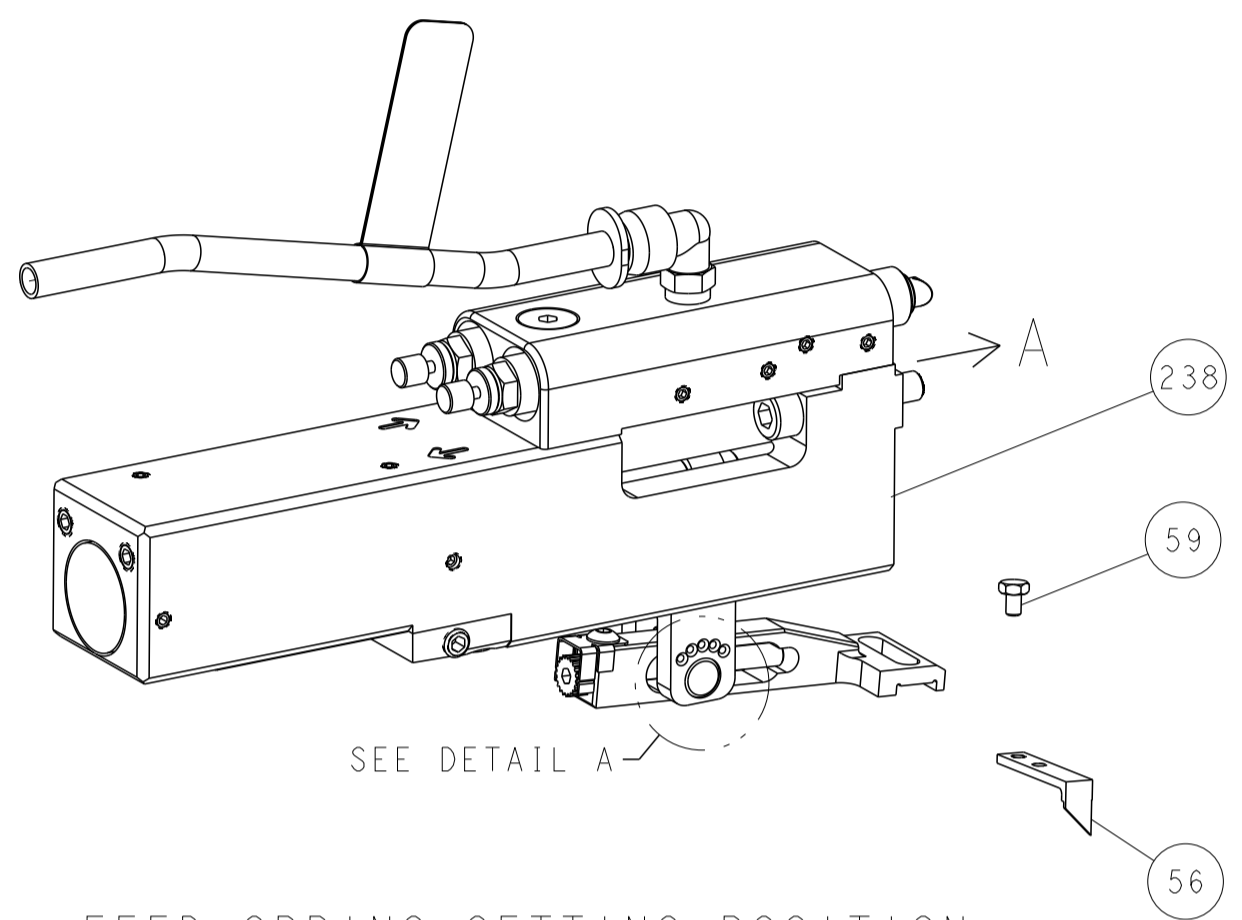
-	-	-	-	1	-	-	2844950-1	AIR FEED MODULE	290
-	1	-	-	1	-	-	2119641-1	FEED CAM, AIR FEED	248
-	1	1	1	1	1	1	2119082-5	CAM, SNAIL, INSULATION ADJUSTMENT	244
-	1	1	1	1	1	1	2079764-1	WASHER, WAVE SPRING, CREST-TO-CREST	243
-	1	1	1	1	1	1	2119083-1	RETAINER, INSULATION DIAL	242
-	1	1	1	1	1	1	7-18023-7	SCR, SKT HD CAP M3 X 4.0	241
-	-	1	-	-	-	1	2119580-1	MECHANICAL FEED ASSEMBLY	239
-	1	-	-	-	-	1	2844940-1	AIR FEED MODULE	238
-	REF	REF	REF	REF	REF	REF	994970-2	COUNTER, MAGNETIC	164
-	1	1	1	1	1	1	1-18028-2	WASHER, FLAT, REG M4	119
-	1	1	1	1	1	1	2844908-1	SCREW, LOCKING	99
-	1	1	1	1	1	1	2844907-1	POST, LOCKING	98
-	1	1	1	1	1	1	1-690438-0	FRONT STRIP GUIDE	96
-	2	2	2	2	2	2	2168083-1	SCR, SKT HD CAP, RoHS, M3 X 8.0	95
-	1	1	1	1	1	1	455888-5	SPACER, CRIMPER	82
-	1	1	1	1	1	1	1-240641-3	SPACER	81
-	2	2	2	2	2	2	2168083-1	SCR, SKT HD CAP, RoHS, M3 X 8.0	79
-	1	1	1	1	1	1	1633782-2	FENCE	78
-	1	1	1	1	1	1	1803607-3	DOCUMENTATION PACKAGE	71
-	1	1	1	1	1	1	2119791-5	DEPRESSOR, WIRE	70
-	1	1	1	1	1	1	2119943-1	WASHER, SPACER	69
-	1	1	1	1	1	1	2119740-1	TAG IDENTIFICATION	67
-	2	2	2	2	2	2	2168078-1	SCREW, DRIVE, RH, RoHS, 2 x .188	66
-	2	2	2	2	2	2	2-18032-5	SCR, SET, FLT PNT, M5 X 20.0	61
-	1	1	1	1	1	1	2168083-2	SCR, SKT HD CAP, RoHS, M4 X 8.0	60
-	1	1	1	1	1	1	5-18022-5	SCR, HEX HD CAP, M4 X 6.0	59
-	1	1	1	1	1	1	1338685-1	PAWL, FEED	56
-	4	4	4	4	4	4	2168083-3	SCR, SKT HD CAP, RoHS, M4 X 12.0	54
-	2	2	2	2	2	2	2168083-2	SCR, SKT HD CAP, RoHS, M4 X 8.0	53
-	1	2	-	1	2	-	18023-9	SCR, SKT HD CAP M4 X 6.0	49
-	-	1	-	-	-	1	2119652-1	FEED CAM, PRE FEED	48
-	-	1	-	-	-	1	2119653-1	FEED CAM, POST FEED	47
-	1	1	1	1	1	1	1803583-9	APPLICATOR BASIC ASSEMBLY, SF	46
-	1	1	1	1	1	1	1803515-1	RAM ASSEMBLY, SF ATLANTIC	44
-	1	1	1	1	1	1	1803602-1	SCR, BHSC, RoHS (M8 X 25)	41
-	1	1	1	1	1	1	1752356-6	SUPPORT, TERMINAL	34
-	2	2	2	2	2	2	2079383-5	SCR, BHSC, RoHS (M4 X 20)	33
-	2	2	2	2	2	2	2-2844962-4	SPACER, CYLINDRICAL, STRIP GUIDE	30
-	1	1	1	1	1	1	2844992-3	ASSEMBLY, STRIP GUIDE	29
-	1	1	1	1	1	1	1-455888-0	SPACER, CRIMPER	28
-	2	2	2	2	2	2	22283-1	SPRING, COMPRESSION	27
-	1	1	1	1	1	1	356835-1	LEVER, DRAG RELEASE	26
-	1	1	1	1	1	1	240792-1	DRAG, TERMINAL	25
-	1	1	1	1	1	1	1320928-2	STRIP GUIDE	24
-	1	1	1	1	1	1	980371-4	SCR, SKT HD SHLDR 5.0 DIA X 6.0	23
-	1	1	1	1	1	1	2168083-2	SCR, SKT HD CAP, RoHS, M4 X 8.0	21
-	1	1	1	1	1	1	1-18028-2	WASHER, FLAT, REG M4	20
-	1	1	1	1	1	1	2119533-1	STRIPPER, SIDE FEED	19
-	1	1	1	1	1	1	2217529-1	TERMINAL HOLD DOWN	18
-	1	1	1	1	1	1	2119806-1	INSERT, SHEAR	13
-	1	1	1	1	1	1	3-22280-3	SPRING, COMPRESSION	12
-	1	1	1	1	1	1	1-356885-4	STOP, SHEAR	11
-	1	1	1	1	1	1	2119805-1	SHEAR HOLDER, FRONT	10
-	1	1	1	1	1	1	1803095-1	FLOATING SHEAR, FRONT	9
-	1	2	2	1	1	1	1333233-1	ANVIL, COMBINATION, SPECIAL	8
-	1	1	1	1	1	1	4-240641-2	SPACER	7
-	1	1	1	1	1	1	2119757-4	DEPRESSOR, SHEAR	5
-	1	1	1	1	1	1	238011-8	BLOCK, CRIMPER SPACER	4
-	1	2	2	1	1	1	2119784-2	CRIMPER, INSULATION O PREMIUM	3
-	1	1	1	1	1	1	455888-1	SPACER, CRIMPER	2
-	1	2	2	1	1	1	5-568176-3	CRIMPER, WIRE	1

DIMENSIONS:	TOLERANCES UNLESS OTHERWISE SPECIFIED:	OWN	OFFNER	DATE	REV
mm	0 PLC ± 1 PLC ± 3 PLC ± 4 PLC ± ANGLES ±	CHK	T. ELBIN	08DEC2011	
MATERIAL	FINISH	APVD	T. ELBIN	08DEC2011	
		NAME		Ocean Side Feed Applicator	
		SIZE		A1 00779	
		CUSTOMER DRAWING		SCALE 1:2 SHEET 1 OF 4 REV J	

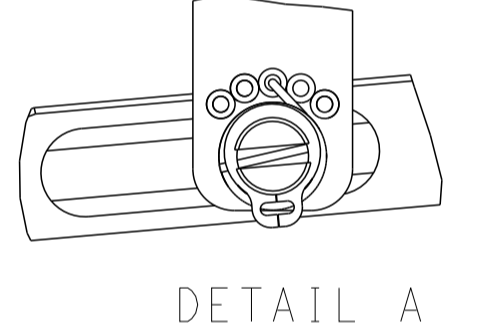
FEED TYPE MECHANICAL



PNEUMATIC

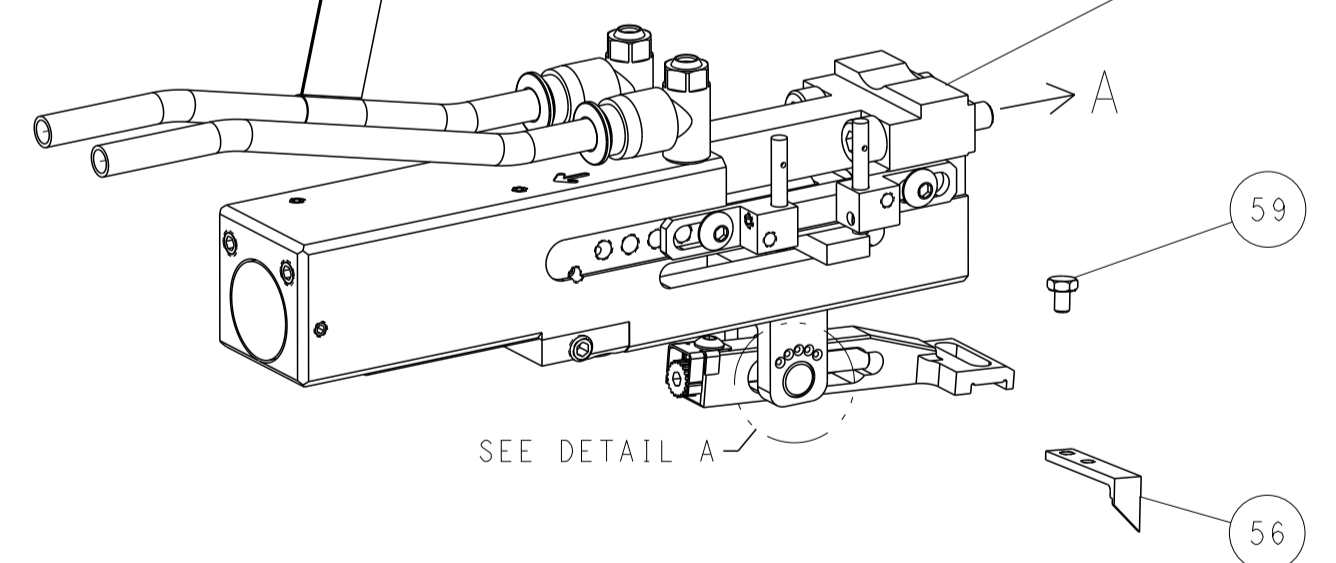


FEED SPRING SETTING POSITION (SHOWN FROM REAR SIDE)

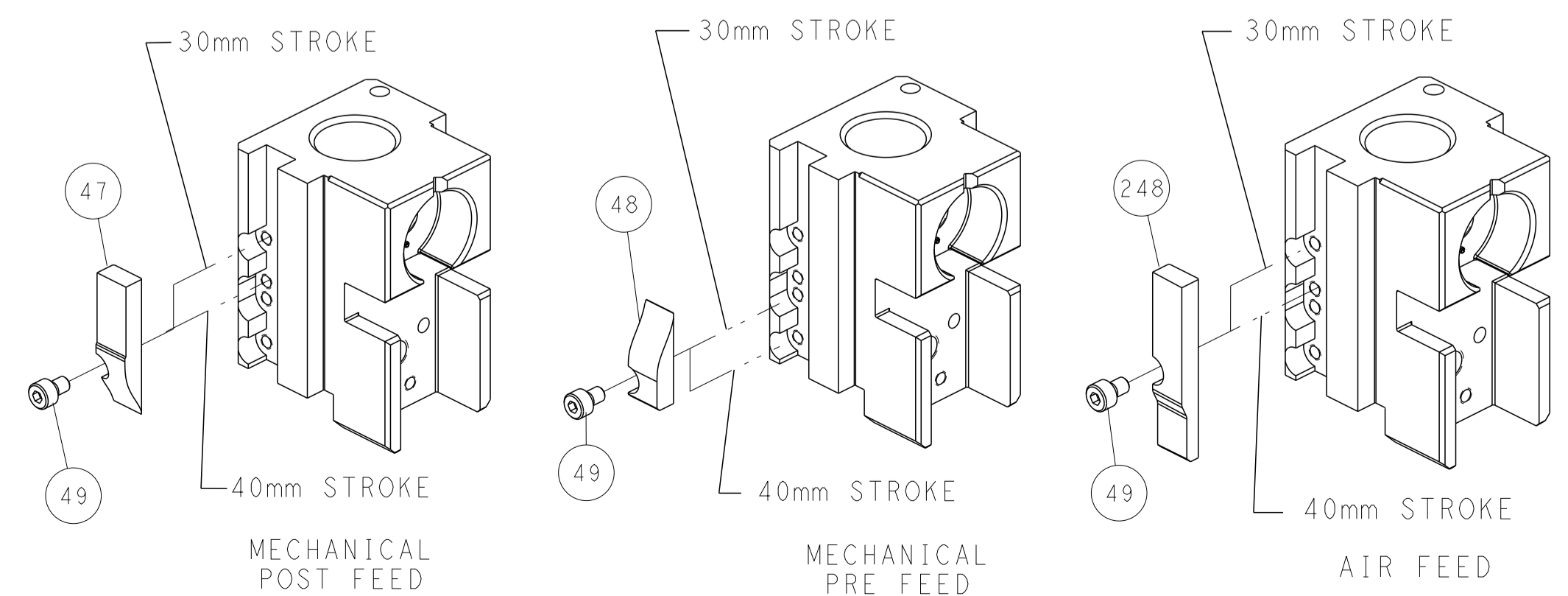


DETAIL A

DOUBLE ACTING PNEUMATIC WITH SENSORS



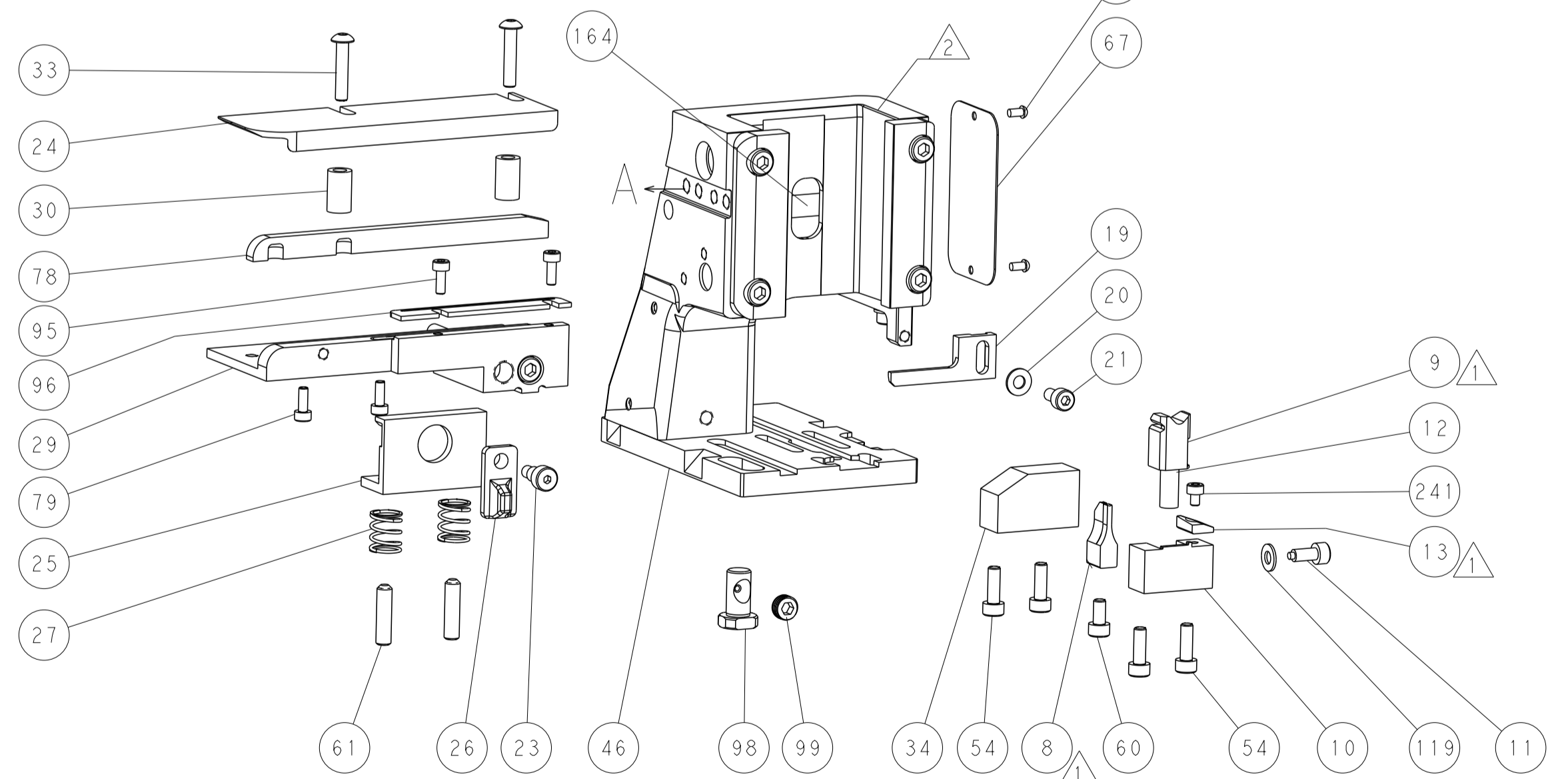
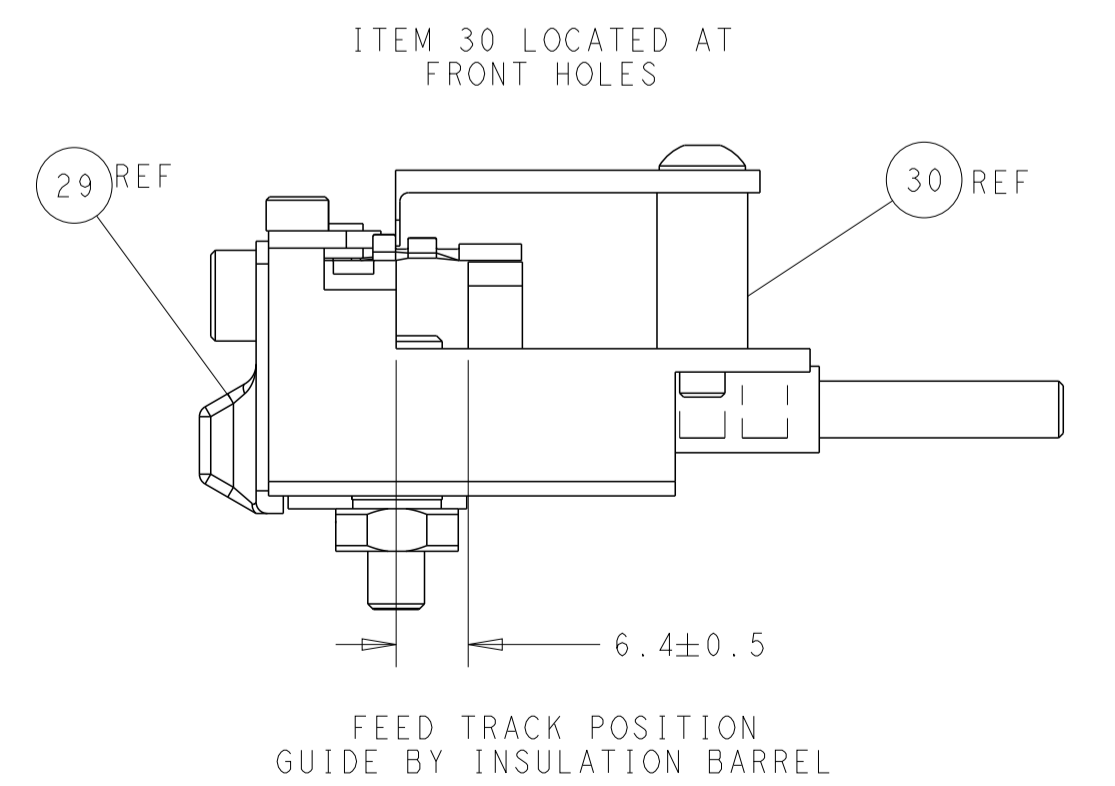
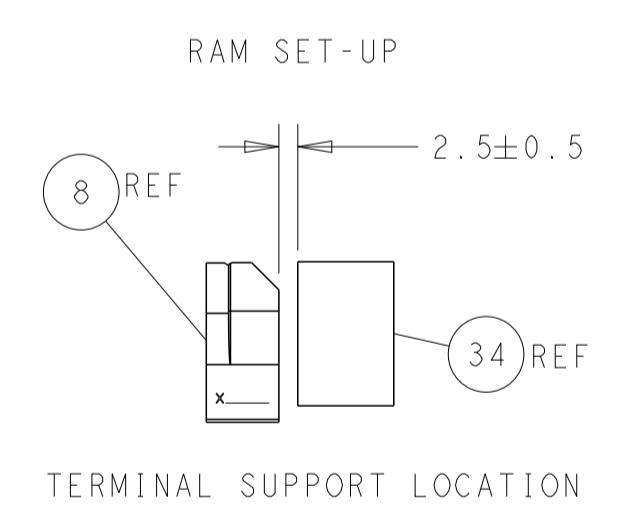
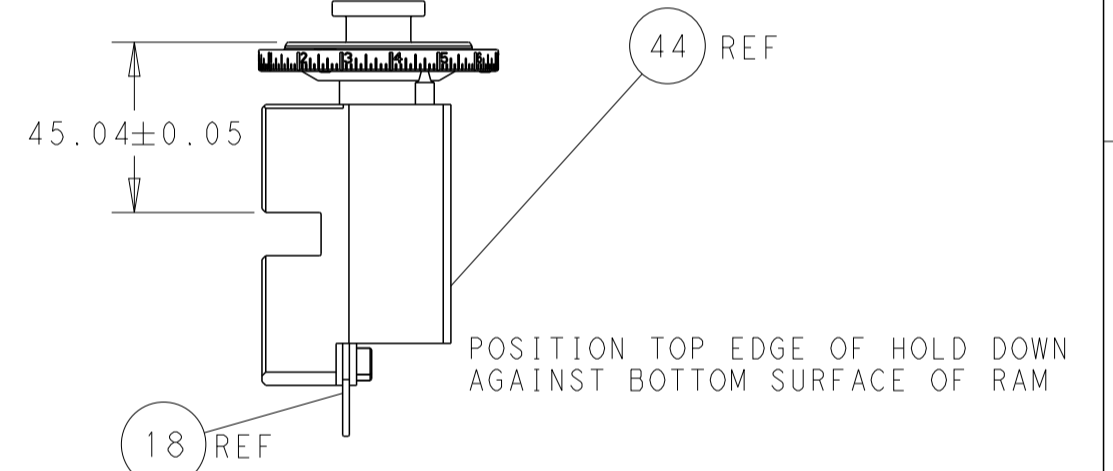
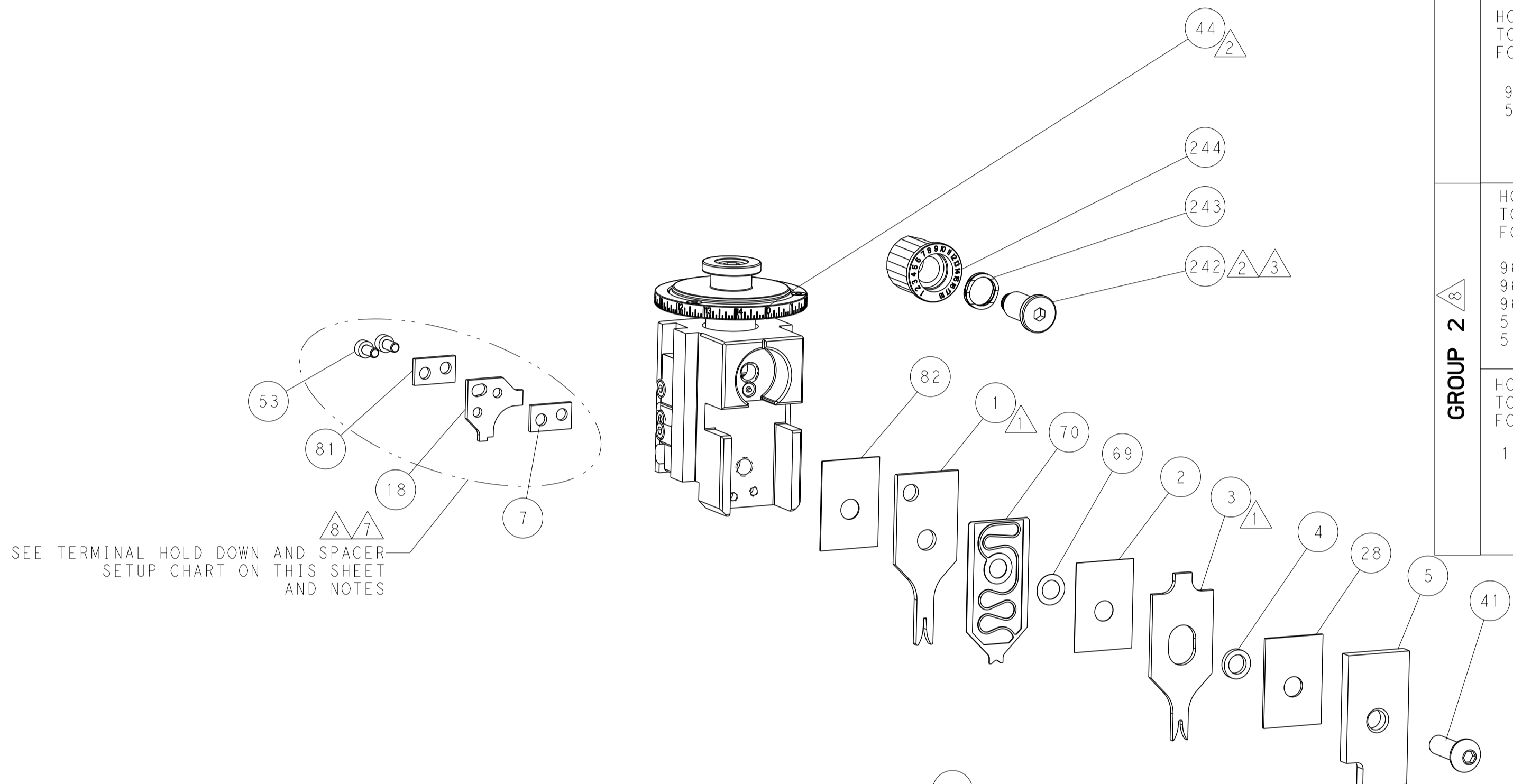
CAM POSITIONS



LOC	DIST	REV	DESCRIPTION	DATE	OWN	APVD
A	66		SEE SHEET 1			

TERMINAL HOLD DOWN & SPACER SETUP CHART

GROUP	HOLD DOWN & SPACER TOOLING SETUP FOR TERMINALS:	POSITION
GROUP 1	928999-1	2-928918-2
	928999-5	3-928918-2
	928999-6	5-928918-1
	5-928999-1	6-928918-1
	5-928999-5	6-928918-2
	5-928999-6	6-928918-3
	6-928999-5	1394702-1
	928918-1	1394702-2
	928918-2	1394702-2
	1-928918-1	5-1394702-1
1-928918-2	5-1394702-2	
GROUP 2	968893-1	
	5-968893-1	
	968220-1	5-968220-6
	968220-5	1703296-1
	968220-6	1703296-5
5-968220-1	1534116-1	
5-968220-5	1534116-2	
5-968220-6	1534116-1	
5-968220-5	5-1534116-1	
1241918-1		



ATLANTIC VERSION
 Shown on sheets 1 of 4 & 2 of 4
 (Pacific version shown on sheets 3 of 4 & 4 of 4)

DIMENSIONS: mm		TOLERANCES UNLESS OTHERWISE SPECIFIED:		OWN: HOFFNER 07DEC2001		TE Connectivity	
0 PLC ±		1 PLC ±		CHE: T. ELBIN 08DEC2011		Harrisburg, PA 17105-3608	
2 PLC ±		3 PLC ±		APVD: T. ELBIN 08DEC2011		NAME: Ocean Side Feed Applicator	
4 PLC ±		ANGLES ±		PRODUCT SPEC		SIZE: CAGE CODE: DRAWING NO: RESTRICTED TO	
MATERIAL:		FINISH:		APPLICATION SPEC		A1 00779 ©=2151541	
CUSTOMER DRAWING		SCALE: 1:2		WEIGHT:		SHEET 2 OF 4 REV J	

PART NUMBER	REVISION	DESCRIPTION	FEED TYPE
2-2151541-1	J	FINE CRIMP HEIGHT ADJUST	MECHANICAL
2-2151541-2	J	FINE CRIMP HEIGHT ADJUST	PNEUMATIC
4-2151541-2	J	FINE CRIMP HEIGHT ADJUST	DOUBLE ACTING PNEUMATIC WITH SENSORS
7-2151541-7	C	CRIMP TOOLING KIT	-

PACIFIC VERSION TERMINATOR INTERFACE ADAPTER



APPLICATOR DATA		
CRIMP	SIZE	TYPE
WIRE	1.27 mm [.050]	F
INSUL	1.83 mm [.072]	O

APPLICATOR INSTRUCTIONS
408-35042

TERMINAL DATA: TE TERMINAL		TE SPECIFICATION	
TERMINAL NAME: MICRO QUADLOK SYSTEM			
WIRE STRIP LENGTH	INSULATION DIAMETER RANGE		
3.05-3.35 mm [1.20-.132 IN]	Ø1.15-1.60 mm [1.045-.063 IN]		
TERMINAL APPLICATION SPECIFICATION (A)114-18021	-		
(B)114-61024	-		

TERMINALS APPLIED			
GROUP 1		GROUP 2	
TE TERMINAL	TE TERMINAL	TE TERMINAL	TE TERMINAL
(A) 928999-1	(A) 5-928918-2	(A) 968220-1	(A) 1703296-1
(A) 928999-5	(A) 5-928918-1	(A) 968220-5	(A) 1703296-5
(A) 928999-6	(A) 6-928918-1	(A) 968220-6	(A) 1534116-1
(A) 5-928999-1	(A) 6-928918-2	(A) 5-968220-1	(A) 1534116-2
(A) 5-928999-5	(A) 6-928918-3	(A) 5-968220-5	(A) 5-1534116-1
(A) 5-928999-6	(A) 1394702-1	(A) 5-968220-6	(A) 5-1534116-2
(A) 6-928999-5	(A) 1394702-2	(B) 2005119-1	(A) 1241918-1
(A) 928918-1	(A) 5-1394702-1		
(A) 928918-2	(A) 5-1394702-2		
(A) 1-928918-1	(A) 968893-1		
(A) 1-928918-2	(A) 5-968893-1		

WIRE SIZE	CRIMP HEIGHT mm [INCH]	CRIMP HEIGHT REFERENCE SETTING
0.35mm2	0.82 +/- 0.03 [0.032 +/- .001]	9.3
0.25mm2	0.76 +/- 0.03 [0.030 +/- .001]	10.0
0.20mm2	0.72 +/- 0.03 [0.028 +/- .001]	10.4



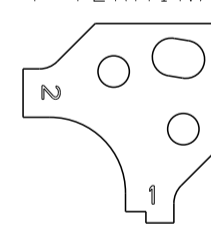
- 1 RECOMMENDED SPARE PARTS
- 2 REFER TO SUPPLIED INSTRUCTION SHEET FOR CLEANING, LUBRICATION AND STORAGE OF APPLICATOR.
- 3 APPLY PART NUMBER 2-23419-6 LOCTITE TO THREADS OF ITEM 242.
- 4 CRIMP HEIGHT REFERENCE SETTING WAS THE SETTING USED WHEN THE APPLICATOR WAS QUALIFIED AT THE FACTORY. ADJUSTMENT MAY BE NECESSARY WHEN RUNNING APPLICATOR IN THE FIELD.
- 5 REFER TO APPLICATION SPECIFICATION, 114-18021, PAGE 8, NOTE 3 CONCERNING CRIMPING 0.50mm² WIRE.
- 6 UNLESS SPECIFIED OTHERWISE TORQUE VALUES SHALL BE USED PER DOCUMENT, 101-35000.

TERMINAL DATA: TE TERMINAL		TE SPECIFICATION	
TERMINAL NAME: MICRO QUADLOK SYSTEM			
WIRE STRIP LENGTH	INSULATION DIAMETER RANGE		
3.05-3.35 mm [1.20-.132 IN]	Ø1.15-1.60 mm [1.045-.063 IN]		
TERMINAL APPLICATION SPECIFICATION (A)114-18021	-		
(B)114-61024	-		

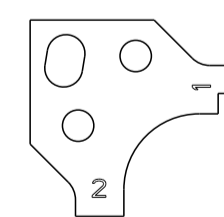
TERMINALS APPLIED			
GROUP 1		GROUP 2	
TE TERMINAL	TE TERMINAL	TE TERMINAL	TE TERMINAL
(A) 928999-1	(A) 5-928918-2	(A) 968220-1	(A) 1703296-1
(A) 928999-5	(A) 5-928918-1	(A) 968220-5	(A) 1703296-5
(A) 928999-6	(A) 6-928918-1	(A) 968220-6	(A) 1534116-1
(A) 5-928999-1	(A) 6-928918-2	(A) 5-968220-1	(A) 1534116-2
(A) 5-928999-5	(A) 6-928918-3	(A) 5-968220-5	(A) 5-1534116-1
(A) 5-928999-6	(A) 1394702-1	(A) 5-968220-6	(A) 5-1534116-2
(A) 6-928999-5	(A) 1394702-2		(A) 1241918-1
(A) 928918-1	(A) 5-1394702-1		
(A) 928918-2	(A) 5-1394702-2		
(A) 1-928918-1	(A) 968893-1		
(A) 1-928918-2	(A) 5-968893-1		

WIRE SIZE	CRIMP HEIGHT mm [INCH]	CRIMP HEIGHT REFERENCE SETTING
0.50mm2	0.92 +/- 0.03 [0.036 +/- .001]	8.3

7 POSITION THE HOLD DOWN, ITEM 18, IN ORIENTATION 1 FOR GROUP 1 TERMINALS, REFER TO SHEET 2.



8 POSITION THE HOLD DOWN, ITEM 18, IN ORIENTATION 2 FOR GROUP 2 TERMINALS, REFER TO SHEET 2.



9 THIS APPLICATOR IS EQUIPPED WITH THE DOUBLE ACTING FEED WITH SENSORS AND IS APPLICATION SPECIFIC. IT DOES NOT REQUIRE ITEMS 49 & 151.

*WARNING
ON INSTALLATION, SET WIRE DISC TO CRIMP HEIGHT REFERENCE SETTING FOR LARGEST WIRE SIZE. CRIMP HEIGHT REFERENCE SETTINGS GREATER THAN THE VALUE SHOWN MAY CAUSE DAMAGE TO THE CRIMP TOOLING. REFER TO THE INSTRUCTION SHEET FOR PROPER SETUP AND ADJUSTMENTS.

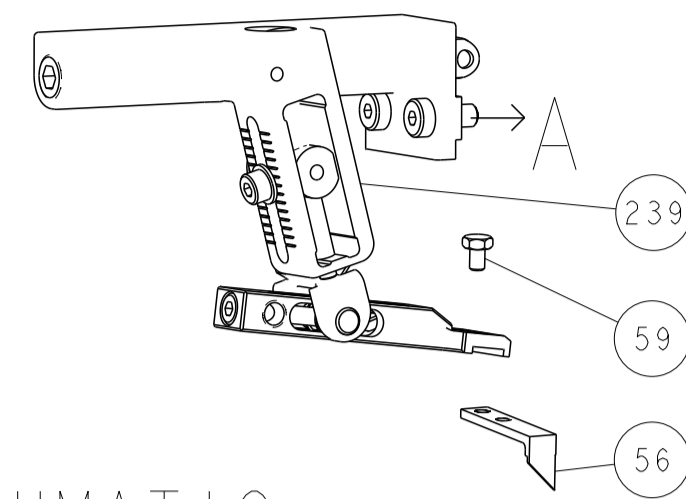
PACIFIC VERSION
Shown on sheets 3 of 4 & 4 of 4
(Atlantic version shown on sheets 1 of 4 & 2 of 4)

LOC	DIST	REVISIONS					
A	66	P	LTN	DESCRIPTION	DATE	OWN	APVD
-	-	-	-	SEE SHEET 1	-	-	-

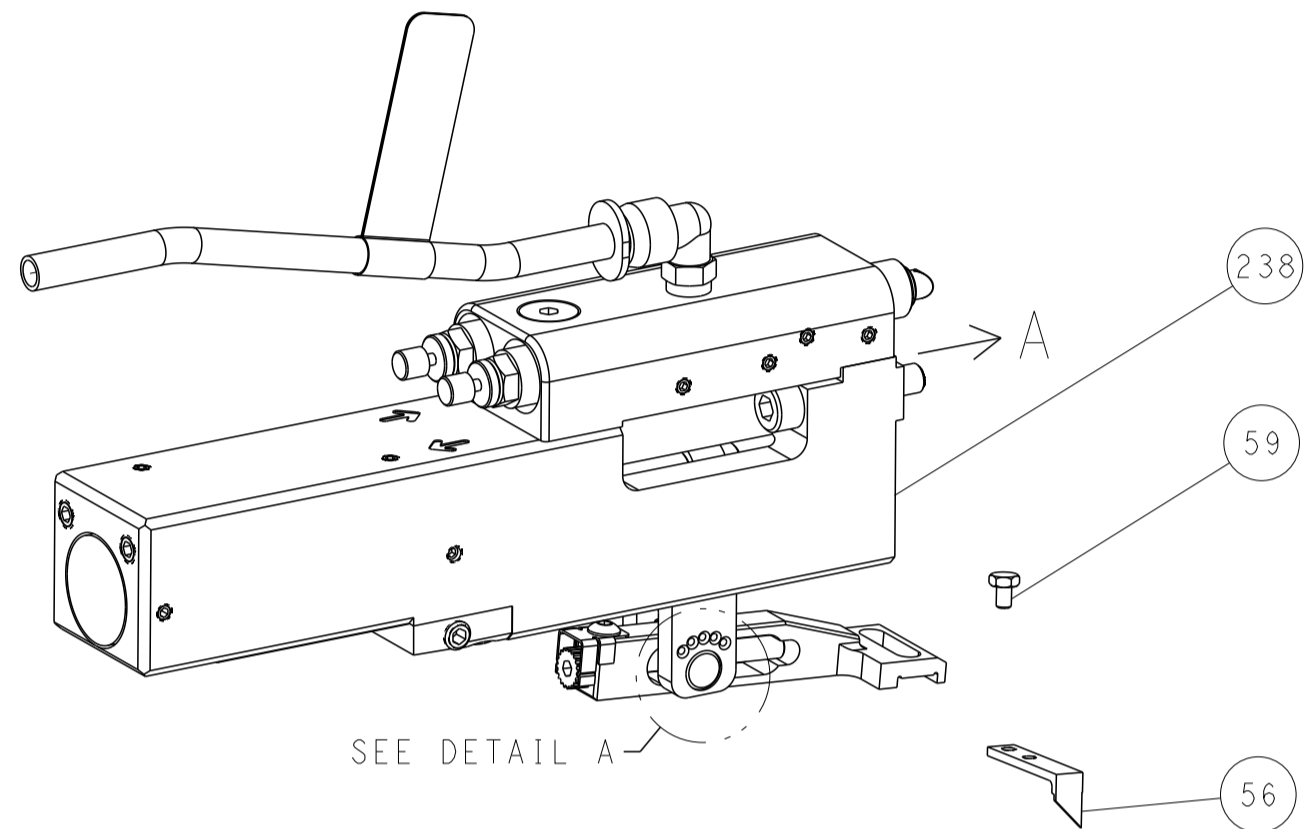
-	1	-	-	2844950-1	AIR FEED MODULE		290
-	1	1	1	2119082-5	CAM, SNAIL, INSULATION ADJUSTMENT		244
-	1	1	1	2079764-1	WASHER, WAVE SPRING, CREST-TO-CREST		243
-	1	1	1	2119083-1	RETAINER, INSULATION DIAL		242
-	1	1	1	7-18023-7	SCR, SKT HD CAP M3 X 4.0		241
-	-	-	-	2119580-1	MECHANICAL FEED ASSEMBLY		239
-	-	1	-	2844940-1	AIR FEED MODULE		238
-	REF	REF	REF	994970-2	COUNTER, MAGNETIC		164
-	-	1	-	2119641-2	FEED CAM, AIR FEED		151
-	1	1	1	2168083-8	SCR, SKT HD CAP, RoHS, M4 X 16		144
-	4	4	4	2168083-9	SCR, SKT HD CAP, RoHS, M4 X 20		143
-	-	-	-	2119653-2	FEED CAM, POST FEED		142
-	1	1	1	1-1803583-0	APPLICATOR BASIC ASSEMBLY, SF		141
-	1	1	1	1803516-1	RAM ASSEMBLY, SF PACIFIC		140
-	1	1	1	1-18028-2	WASHER, FLAT, REG M4		119
-	1	1	1	2844908-1	SCREW, LOCKING		99
-	1	1	1	2844907-1	POST, LOCKING		98
-	1	1	1	1-690438-0	FRONT STRIP GUIDE		96
-	2	2	2	2168083-1	SCR, SKT HD CAP, RoHS, M3 X 8.0		95
-	1	1	1	455888-5	SPACER, CRIMPER		82
-	1	1	1	1-240641-3	SPACER		81
-	2	2	2	2168083-1	SCR, SKT HD CAP, RoHS, M3 X 8.0		79
-	1	1	1	1633782-2	FENCE		78
-	1	1	1	1803607-3	DOCUMENTATION PACKAGE		71
-	1	1	1	2119791-5	DEPRESSOR, WIRE		70
-	1	1	1	2119943-1	WASHER, SPACER		69
-	1	1	1	2119740-1	TAG, IDENTIFICATION		67
-	2	2	2	2168078-1	SCREW, DRIVE, RH, RoHS, 2 x .188		66
-	2	2	2	2-18032-5	SCR, SET, FLT PNT, M5 X 20.0		61
-	1	1	1	5-18022-5	SCR, HEX HD CAP, M4 X 6.0		59
-	1	1	1	1338685-1	PAWL, FEED		56
-	2	2	2	2168083-2	SCR, SKT HD CAP, RoHS, M4 X 8.0		53
-	-	-	-	18023-9	SCR, SKT HD CAP, M4 X 6.0		49
-	-	-	-	2119652-1	FEED CAM, PRE FEED		48
-	1	1	1	1803602-1	SCR, BHSC, RoHS (M8 X 25)		41
-	1	1	1	1752356-6	SUPPORT, TERMINAL		34
-	2	2	2	2079383-5	SCR, BHSC, RoHS (M4 X 20)		33
-	2	2	2	2-2844962-4	SPACER, CYLINDRICAL, STRIP GUIDE		30
-	1	1	1	2844992-3	ASSEMBLY, STRIP GUIDE		29
-	1	1	1	1-455888-0	SPACER, CRIMPER		28
-	2	2	2	22283-1	SPRING, COMPRESSION		27
-	1	1	1	356835-1	LEVER, DRAG RELEASE		26
-	1	1	1	240792-1	DRAG, TERMINAL		25
-	1	1	1	1320928-2	STRIP GUIDE		24
-	1	1	1	980371-4	SCR, SKT HD SHLDR 5.0 DIA X 6.0		23
-	1	1	1	2168083-2	SCR, SKT HD CAP, RoHS, M4 X 8.0		21
-	1	1	1	1-18028-2	WASHER, FLAT, REG M4		20
-	1	1	1	2119533-1	STRIPPER, SIDE FEED		19
-	1	1	1	2217529-1	TERMINAL HOLD DOWN		18
-	1	1	1	2119806-1	INSERT, SHEAR		13
-	1	1	1	3-22280-3	SPRING, COMPRESSION		12
-	1	1	1	1-356885-4	STOP, SHEAR		11
-	1	1	1	2119805-1	SHEAR HOLDER, FRONT		10
-	1	1	1	1803095-1	FLOATING SHEAR, FRONT		9
1	1	1	1	1333233-1	ANVIL, COMBINATION, SPECIAL		8
-	1	1	1	4-240641-2	SPACER		7
-	1	1	1	2119757-4	DEPRESSOR, SHEAR		5
-	1	1	1	238011-8	BLOCK, CRIMPER SPACER		4
1	1	1	1	2119784-2	CRIMPER, INSULATION O PREMIUM		3
-	1	1	1	455888-1	SPACER, CRIMPER		2
1	1	1	1	5-568176-3	CRIMPER, WIRE		1

ITEM NO	PART NO	DESCRIPTION					
-77	-42	-22	-21	TE Connectivity Harrisburg, PA 17105-3608			
<table border="1"> <tr> <td> DIMENSIONS: mm </td> <td> TOLERANCES UNLESS OTHERWISE SPECIFIED: 0 PLC ± 1 PLC ± 2 PLC ± 3 PLC ± 4 PLC ± ANGLES ± FINISH </td> <td> DWN: HOFFNER 07DEC2001 CHK: T. ELBIN 08DEC2011 APVD: T. ELBIN 08DEC2011 PRODUCT SPEC APPLICATION SPEC WEIGHT CUSTOMER DRAWING </td> <td> NAME: Ocean Side Feed Applicator SIZE: A1 CAGE CODE: 00779 DRAWING NO: C=2151541 SCALE: 1:2 SHEET: 3 of 4 REV: J </td> </tr> </table>				DIMENSIONS: mm 	TOLERANCES UNLESS OTHERWISE SPECIFIED: 0 PLC ± 1 PLC ± 2 PLC ± 3 PLC ± 4 PLC ± ANGLES ± FINISH	DWN: HOFFNER 07DEC2001 CHK: T. ELBIN 08DEC2011 APVD: T. ELBIN 08DEC2011 PRODUCT SPEC APPLICATION SPEC WEIGHT CUSTOMER DRAWING	NAME: Ocean Side Feed Applicator SIZE: A1 CAGE CODE: 00779 DRAWING NO: C=2151541 SCALE: 1:2 SHEET: 3 of 4 REV: J
DIMENSIONS: mm 	TOLERANCES UNLESS OTHERWISE SPECIFIED: 0 PLC ± 1 PLC ± 2 PLC ± 3 PLC ± 4 PLC ± ANGLES ± FINISH	DWN: HOFFNER 07DEC2001 CHK: T. ELBIN 08DEC2011 APVD: T. ELBIN 08DEC2011 PRODUCT SPEC APPLICATION SPEC WEIGHT CUSTOMER DRAWING	NAME: Ocean Side Feed Applicator SIZE: A1 CAGE CODE: 00779 DRAWING NO: C=2151541 SCALE: 1:2 SHEET: 3 of 4 REV: J				

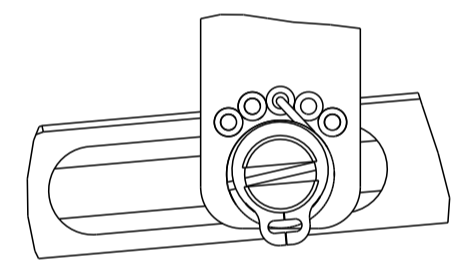
FEED TYPE MECHANICAL



PNEUMATIC

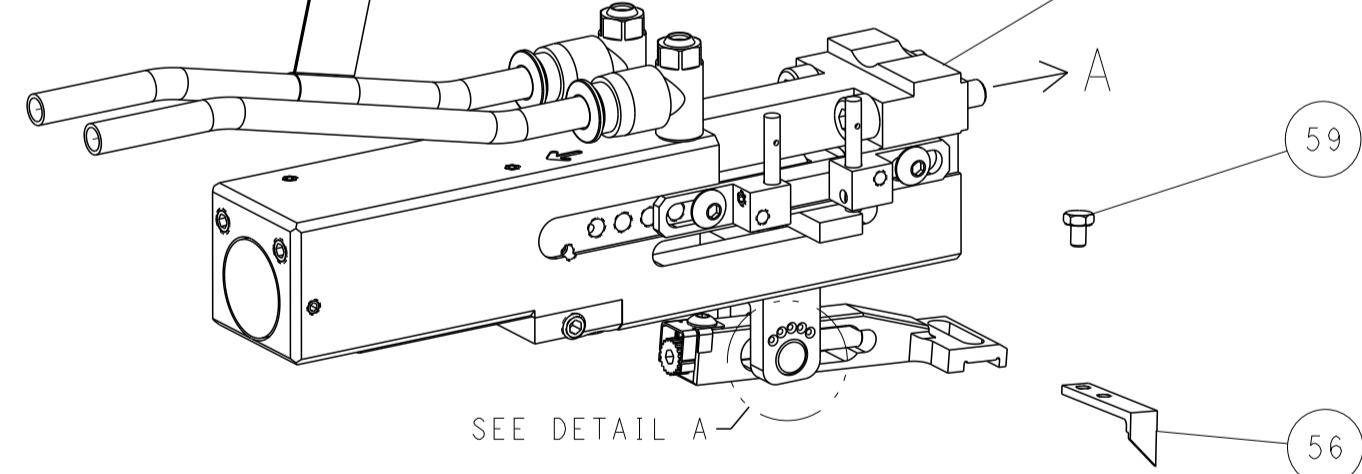


FEED SPRING SETTING POSITION
(SHOWN FROM REAR SIDE)



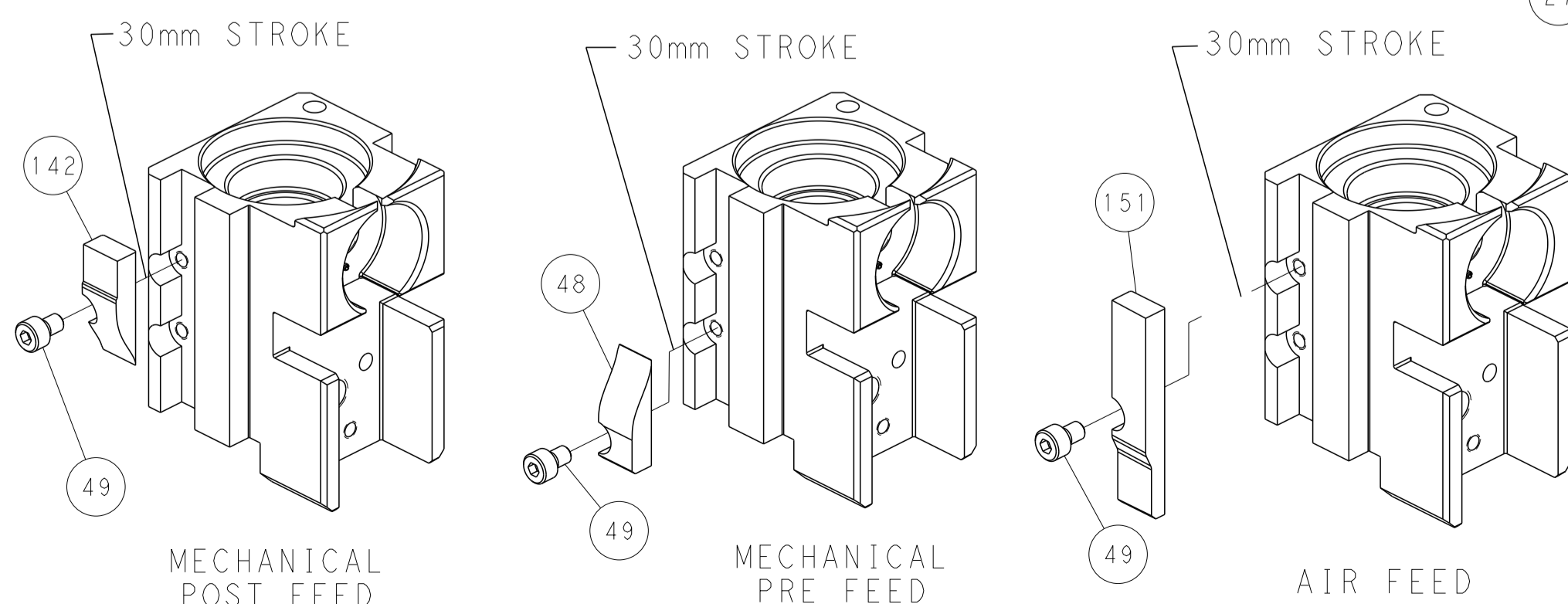
DETAIL A

DOUBLE ACTING PNEUMATIC WITH SENSORS

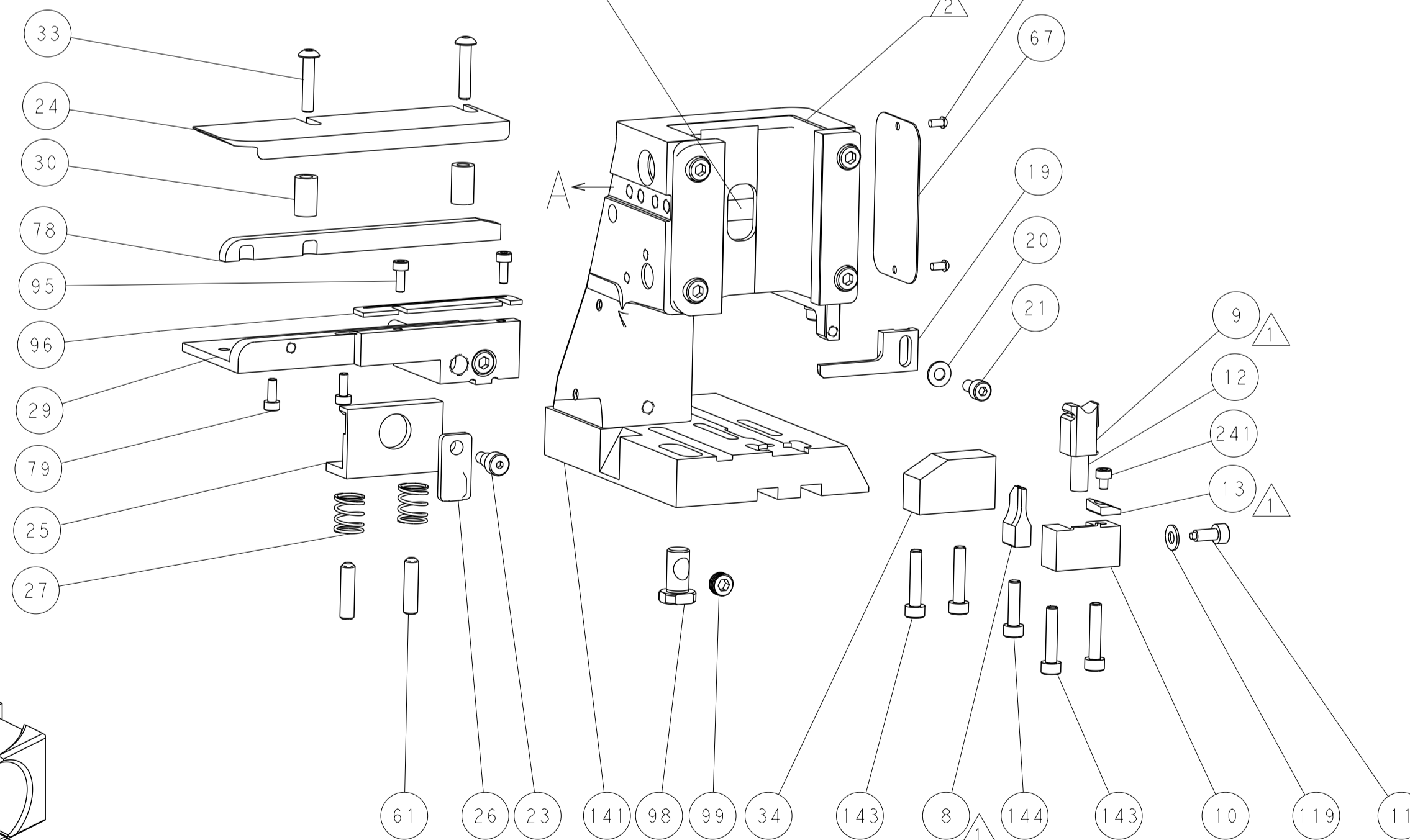


SEE DETAIL A

CAM POSITIONS



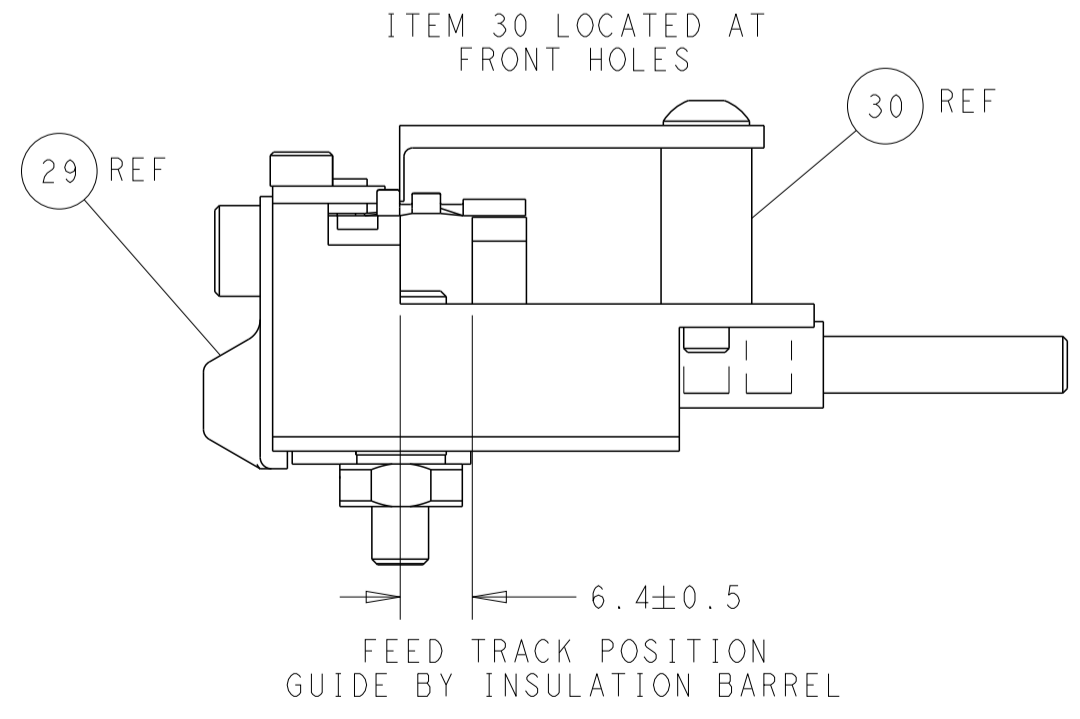
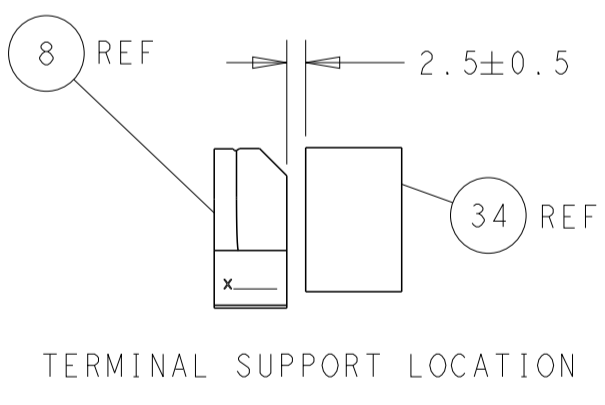
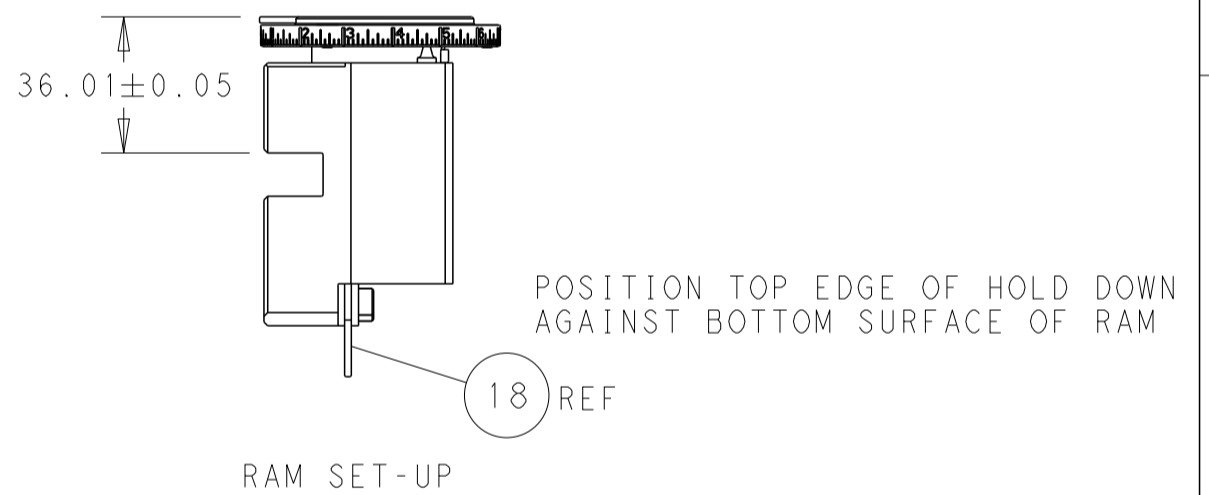
SEE TERMINAL HOLD DOWN AND SPACER
SETUP CHART ON THIS SHEET
AND NOTES



PACIFIC VERSION
 Shown on sheets 3 of 4 & 4 of 4
 (Atlantic version shown on sheets 1 of 4 & 2 of 4)

LOC	DIST	REV	DATE	BY	APPV
A	66				

TERMINAL HOLD DOWN & SPACER SETUP CHART		
GROUP 1	HOLD DOWN & SPACER TOOLING SETUP FOR TERMINALS: 928999-1 2-928918-2 928999-5 3-928918-2 928999-6 5-928918-1 5-928999-1 6-928918-1 5-928999-5 6-928918-2 5-928999-6 6-928918-3 6-928999-5 1394702-1 928918-1 1394702-1 928918-2 5-1394702-1 1-928918-1 5-1394702-2 1-928918-2 5-1394702-2	POSITION 1
	HOLD DOWN & SPACER TOOLING SETUP FOR TERMINALS: 968893-1 5-968893-1	POSITION 1
	HOLD DOWN & SPACER TOOLING SETUP FOR TERMINALS: 968220-1 5-968220-6 968220-5 1703296-1 968220-6 1703296-5 5-968220-1 1534116-1 5-968220-5 1534116-2 5-968220-5 5-1534116-1	POSITION 2
	HOLD DOWN & SPACER TOOLING SETUP FOR TERMINALS: 1241918-1	POSITION 2



DIMENSIONS: mm 		TOLERANCES UNLESS OTHERWISE SPECIFIED: 0 PLC ±. 1 PLC ±. 2 PLC ±. 3 PLC ±. 4 PLC ±. ANGLES ±. FINISH		DWN: HOFFNER 07DEC2001 CHK: T. ELBIN 08DEC2011 APVD: T. ELBIN 08DEC2011 PRODUCT SPEC APPLICATION SPEC WEIGHT CUSTOMER DRAWING		NAME: Ocean Side Feed Applicator SIZE: A1 CAGE CODE: 00779 DRAWING NO: C-2151541 SCALE: 1:2 SHEET: 4 OF 4 REV: J		TE Connectivity Harrisburg, PA 17105-3608	
--------------------	--	---	--	---	--	--	--	--	--