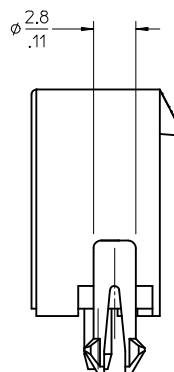
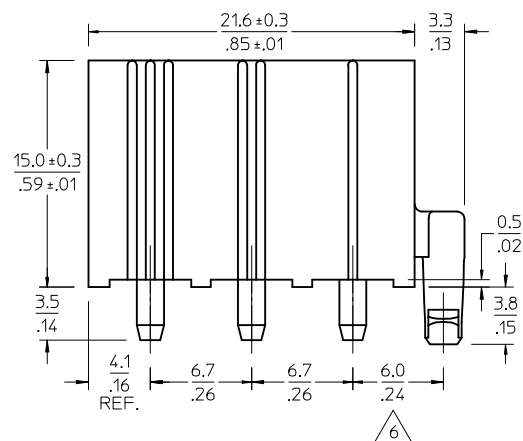


RECOMMENDED P.C. BOARD HOLE DIM.

SCALE 2:1

NOTES:

- 1) MATERIAL:  
HOUSING: "BLANK" = NYLON 6/6, UL94V-2, COLOR: NATURAL  
"201" = NYLON 6/6, UL94V-0, COLOR: NATURAL  
TERMINAL: C2700W BRASS
- 2) FINISH: 0.000003/(.0000001) MIN. TIN OVERALL OVER  
0.000001/(.00000004) MIN. NICKEL OVERALL
- 3) PRODUCT SPECIFICATION: PS-3191-003
- 4) PACKAGING: PK-5219-002
- 5) MATES WITH: 3191-03R SERIES  
DIFFERENCE OF DIMENSION IS INTENTIONAL TO PREVENT PART RISING FROM P.C.B.
- 7) PARTS CONFORM TO CLASS 'B' REQUIREMENTS OF COSMETIC SPECIFICATION PS-45499-002.



ENG. NO.	ORDER NO.	PIN STYLE	HSG. MATERIAL	PIN PLATING
5219-03A	I5-31-I036	SOLID	94V-2 NYLON	TIN
5219-03B	I5-31-3036	HOLLOW	94V-2 NYLON	TIN
5219-03A-201	39-28-7038	SOLID	94V-0 NYLON	TIN

ADD P/N 15-31-3036 EC NO: UCP2014-1950 DRW:ALHAG 2013/12/16 CHKD:JBELL 2013/12/16 APPR:FSMTH 2013/12/19	QUALITY SYMBOLS	GENERAL TOLERANCES (UNLESS SPECIFIED)	DIMENSION STYLE	SCALE	DESIGN UNITS	THIRD ANGLE PROJECTION															
	$\nabla=0$ $\nabla=0$	<table border="1"> <thead> <tr> <th></th> <th>mm</th> <th>INCH</th> </tr> </thead> <tbody> <tr> <td>4 PLACES</td> <td>± .005</td> <td>± .0005</td> </tr> <tr> <td>3 PLACES</td> <td>± .005</td> <td>± .0005</td> </tr> <tr> <td>2 PLACES</td> <td>± 0.13</td> <td>± .010</td> </tr> <tr> <td>1 PLACE</td> <td>± 0.25</td> <td>± .020</td> </tr> </tbody> </table>		mm	INCH	4 PLACES	± .005	± .0005	3 PLACES	± .005	± .0005	2 PLACES	± 0.13	± .010	1 PLACE	± 0.25	± .020	MM/IN	4:1	METRIC	<input checked="" type="checkbox"/> THIRD ANGLE PROJECTION
		mm	INCH																		
	4 PLACES	± .005	± .0005																		
3 PLACES	± .005	± .0005																			
2 PLACES	± 0.13	± .010																			
1 PLACE	± 0.25	± .020																			
DRAWN BY: TASAKAWA CHECKED BY: HIRAMOT APPROVED BY: FUKUSHIM DATE: 1995/11/18	MATERIAL NO. <b>SEE CHART</b>	TITLE <b>NEW INTERNATIONAL CONN. HEADER AND ASSY.</b>	DOCUMENT NO. <b>SD-5219-03A-*</b>	SHEET NO. <b>1 OF 1</b>																	
N5	DRAFT WHERE APPLICABLE MUST REMAIN WITHIN DIMENSIONS	ANGULAR ±1/2°	THIS DRAWING CONTAINS INFORMATION THAT IS PROPRIETARY TO MOLEX INCORPORATED AND SHOULD NOT BE USED WITHOUT WRITTEN PERMISSION																		