



FORCE 6 LOCKDOWN



Making sure your equipment arrives in one piece and fully functional means you can't cut corners when selecting the right aluminium container. The Extreme Lockdown range of standard aluminium containers are made from a special high-tensile aluminium alloy providing a lightweight container with a natural resistance to impact. Up to 30% lighter than equivalent rotational moulded containers.

For nearly 10 years Extreme Lockdown Mil-Std810F aluminium containers have been proven in the field. In use with UK, German, and other European forces they really are 'battle' hardened! From this experience we have developed our new range of IP66 aluminium containers. More affordable...but without sacrificing performance.

Containers for
expeditions
photography
film and audio-
visual
sports
drones
medical
test and
measurement
offshore
construction
marine



6000 Aluminium Container
ext dims -400mm x 300mm x 200mm



6001 Aluminium Container
ext dims -400mm x 300mm x 400mm



6002 Aluminium Container
ext dims -400mm x 300mm x 600mm



6010 Aluminium Container
ext dims -600mm x 300mm x 200mm



6011 Aluminium Container
ext dims -600mm x 300mm x 400mm



6012 Aluminium Container
ext dims -600mm x 300mm x 600mm



6020 Aluminium Container
ext dims -800mm x 600mm x 200mm



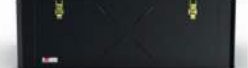
6021 Aluminium Container
ext dims -800mm x 600mm x 400mm



6022 Aluminium Container
ext dims -800mm x 600mm x 600mm



6030 Aluminium Container
ext dims -1200mm x 800mm x 200mm



6031 Aluminium Container
ext dims -1200mm x 800mm x 400mm



6032 Aluminium Container
ext dims -1200mm x 800mm x 600mm

CASES

IP66
water & dust tight
heavy duty handles
euro pallet compatible sizes
interstack all sizes
padlockable safety latch
12 sizes
range of standard colours





FORCE 6 LOCKDOWN



Part No	Ext Dims (mm)	Int Dims (mm)	Vol (L)	No of handles
6000	400 300 200	327 227 179	13L	2
6001	400 300 400	327 227 379	28L	2
6002	400 300 600	327 227 579	43L	2
6010	600 400 200	527 327 179	31L	2
6011	600 400 400	527 327 379	65L	2
6012	600 400 600	527 327 579	100L	2
6020	800 600 200	727 527 179	69L	2
6021	800 600 400	727 527 379	145L	2
6022	800 600 600	727 527 579	222L	2
6030	1200 800 200	1127 727 179	147L	4
6031	1200 800 400	1127 727 379	311L	4
6032	1200 800 600	1127 727 579	474L	4

specification

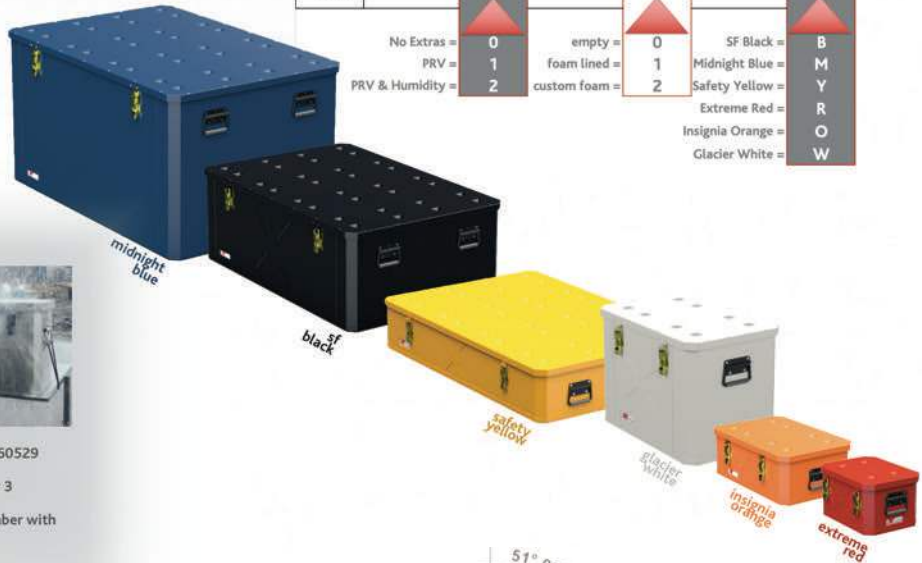
- high tensile lightweight 1.5 mm aluminium - up to 30% lighter than rotational moulded containers
- modular - all sizes of container are inter stackable
- positive, gasketed cover closure
- IP66 water and dust tight
- 12 standard sizes
- durable powder coat paint finish
- heavy duty steel handles with wide bale
- range of standard colours
- self locking, padlockable, sprung steel latches
- pallet sizes



options

- breather valves
- humidity indicator
- hinged lid
- specialised paint/finishes
- custom foam internals
- strapping and lifting options
- fork lift skids
- internal storage pouches
- wheeled options
- custom sizes also available
- custom metalwork
- labeling

Part Number Configurator					
Case Size	Extras	Internals	Colour		
6xxx	x	x	x		
	No Extras = 0 PRV = 1 PRV & Humidity = 2	empty = 0 foam lined = 1 custom foam = 2	SF Black = B Midnight Blue = M Safety Yellow = Y Extreme Red = R Insignia Orange = O Glacier White = W		

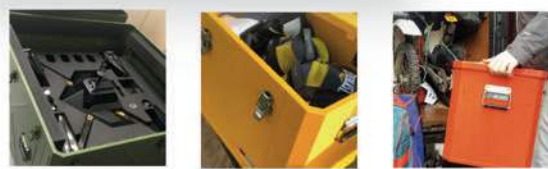


IP66 rated



Tested to IP66 in accordance IP BS EN 60529

That's a heavy water jet (100l/min) for 3 minutes from all directions!
...and 8 hours in a turbulent dust chamber with a fine talc dust



EXTREME CASES LIMITED

Unit 8 Hartland View Farm
Shirwell
North Devon
EX31 4TG
UK

TEL: +44 (0) 1271 374 102
EMAIL: INFO@EXTREME-CASES.COM

WWW.EXTREME-CASES.COM

extreme
CASES