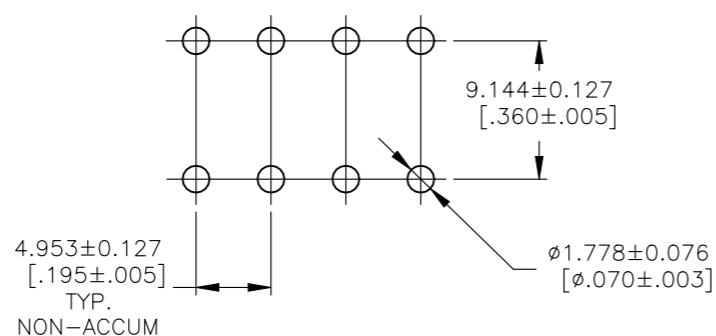
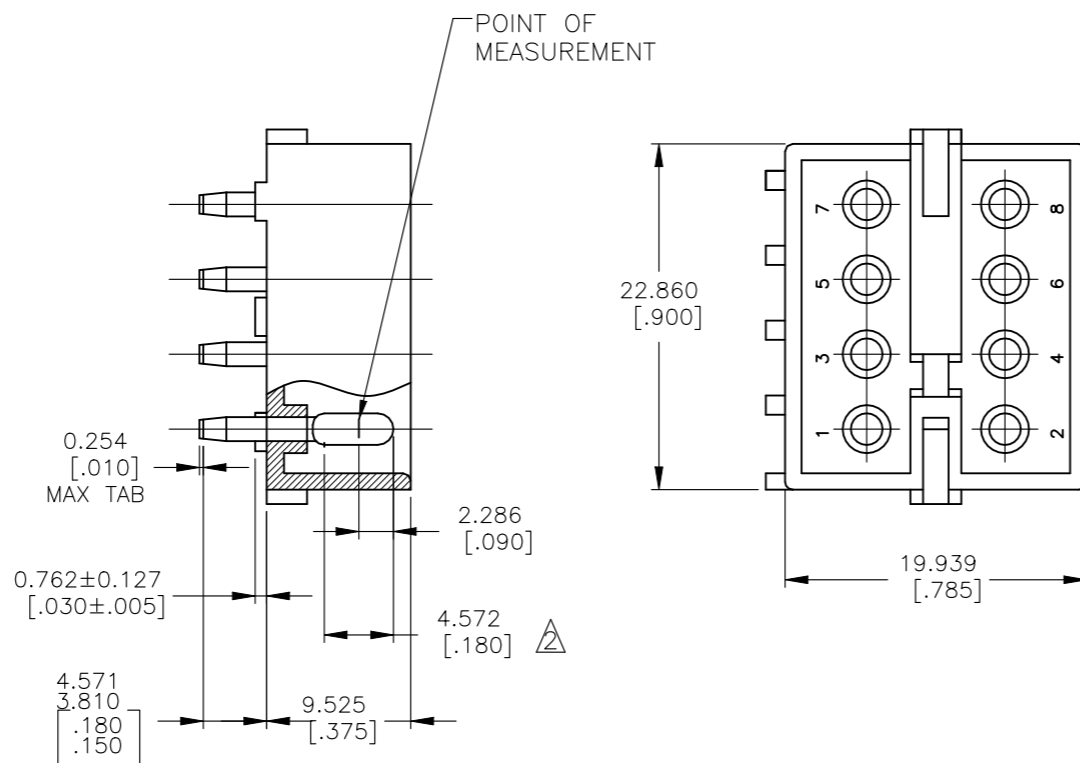
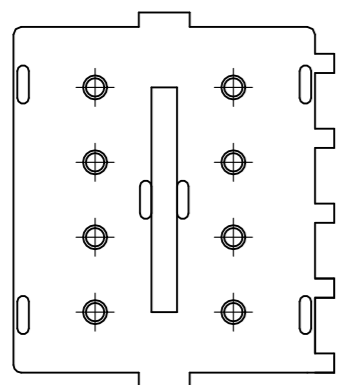


THIS DRAWING IS UNPUBLISHED. RELEASED FOR PUBLICATION
 © COPYRIGHT BY TYCO ELECTRONICS CORPORATION. ALL RIGHTS RESERVED.

LOC	DIST	REVISIONS					
CM	00	P	LTR	DESCRIPTION	DATE	DWN	APVD
		A		REVISED PER ECR-21-117185	25OCT2021	PJ	VS



RECOMMENDED LAYOUT FOR
 1.575 [.062] THICK P.C. BOARD

- PARTS MUST COMPLY WITH SOLDERABILITY SPEC. 109-11-3.
- CONTACT IS PLATED OVERALL WITH .000050 NICKEL, THEN .000030 GOLD OVER CONTACT LENGTH INDICATED AND MATTE TIN ON SOLDER TAIL END.
- DIMENSION SHOWN REPRESENT PRODUCT IN DRY CONDITION. ADDITIONAL 2% GROWTH DUE TO END USE LOCATION MOISTURE ABSORPTION MAY OCCUR AND SHOULD BE ACCOUNTED FOR.

1586518-2	NYLON-NATURAL	COPPER ALLOY-GOLD
ASSEMBLY NO.	HSG, MATL& COLOR	PIN MATL & FINISH

THIS DRAWING IS A CONTROLLED DOCUMENT.		DWN	100CT2005	tyco Tyco Electronics Corporation	Harrisburg, PA 17105-3608
DIMENSIONS: mm [INCHES]		CHK	180CT2005		
TOLERANCES UNLESS OTHERWISE SPECIFIED:		APVD	180CT2005	NAME	
0 PLC ± -		D. COLEY		8 CIRCUIT COMMERCIAL MATE-N-LOCK (TM) HEADER	
1 PLC ± -		D. COLEY		PRODUCT SPEC	
2 PLC ± -		-		APPLICATION SPEC	
3 PLC ± -		-		SIZE	
4 PLC ± -		-		CAGE CODE	
ANGLES ± -		-		DRAWING NO	
MATERIAL		WEIGHT		RESTRICTED TO	
SEE TABLE		-		-	
FINISH		CUSTOMER DRAWING		SCALE	
SEE TABLE		A3 00779 C-1586518		3:1	
				SHEET	
				1 OF 1	
				REV	
				A	

METRIC