

MICRO SWITCH
a Honeywell Division

FED. MFG. CODE 91929

SWITCH - BASIC

CATALOG LISTING

YZ-2RW80284-A2

AYK0182

CATALOG LISTING
YZ-2RW80284-A2

PAGE 1 OF 1



ISSUE
4

REPLACES
RELEASE NO. 205036

CHECK

REVISIONS

A	205691	09JAN06
G J W 30 MAY 02		
B	0000677	09JAN06
J L H 25 JUN 03		
C	0017586	RJ
T S G 09 JAN 06		

CHECK

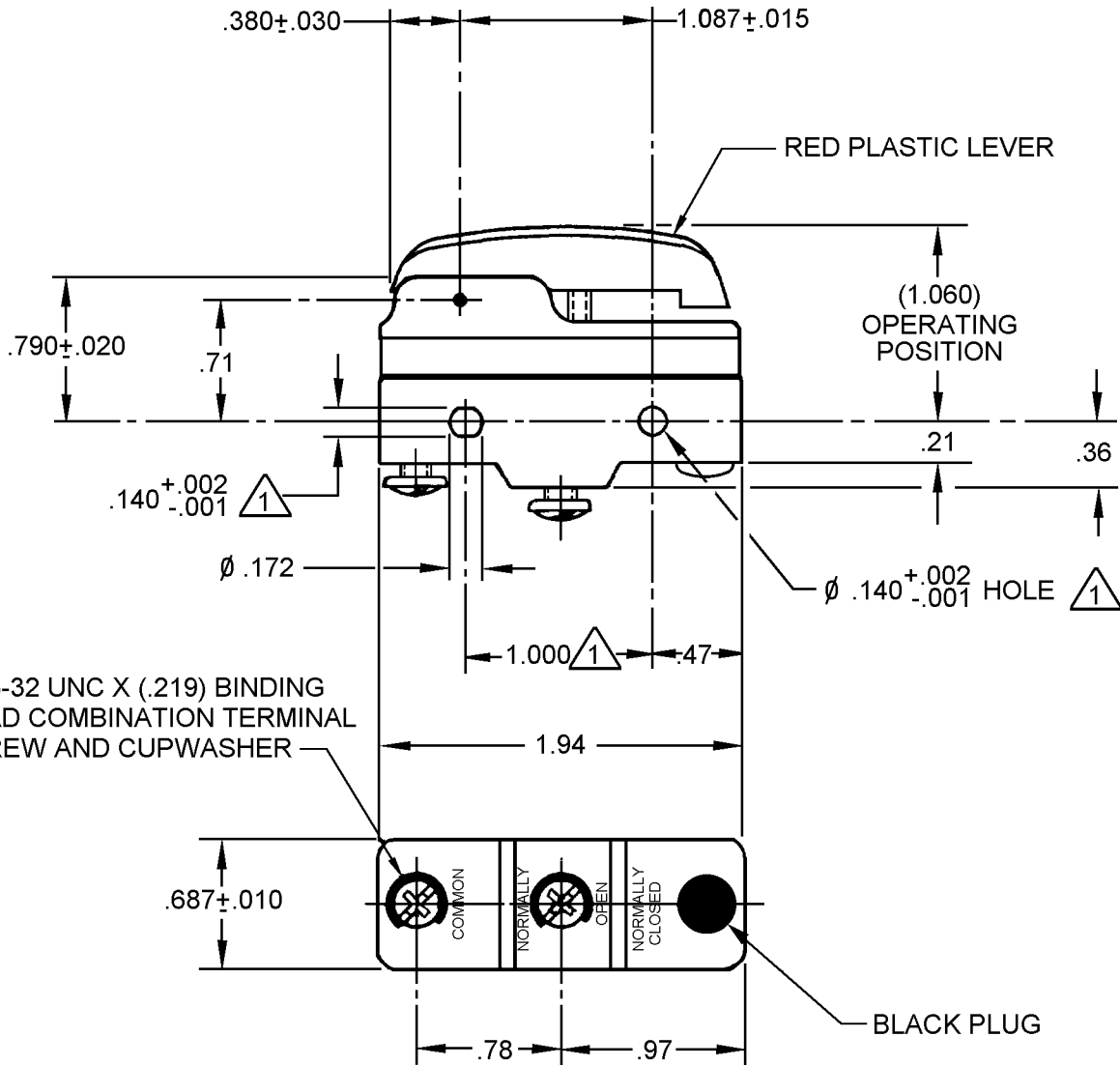
6 MAR 02

S A V

CHECK

6 MAR 02

RASTER
DRAWN



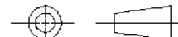
2X 6-32 UNC X (.219) BINDING HEAD COMBINATION TERMINAL SCREW AND CUPWASHER

NOTE
MOUNTING HOLES WILL ACCEPT PINS OR SCREWS OF $\phi .139$ MAX ON $1.000 \pm .002$ CENTERS

ANSI Y14.5M-1982 APPLIES

THIS DRAWING COVERS A PROPRIETARY ITEM AND IS THE PROPERTY OF MICRO SWITCH, A DIVISION OF HONEYWELL. THIS DRAWING IS NOT TO BE COPIED OR USED WITHOUT THE APPROVAL OF MICRO SWITCH.

THIRD ANGLE PROJECTION



CHARACTERISTICS

ELECTRICAL DATA

SCALE FULL

DO NOT SCALE PRINT

CONTACT ARRANGEMENT
S P N O

UNLESS OTHERWISE SPECIFIED TOLERANCES ARE

L96 15A 125, 250 OR 480 VAC
1/8HP 125 VAC, 1/4HP 250 VAC
1/2A 125 VDC, 1/4A 250 VDC

ONE PLACE (.0) $\pm .030$

TWO PLACE (.00) $\pm .015$

THREE PLACE (.000) $\pm .005$

ANGLES \pm



16A 250V T85 5E4

WEIGHT