

**Specification Status: Preliminary**

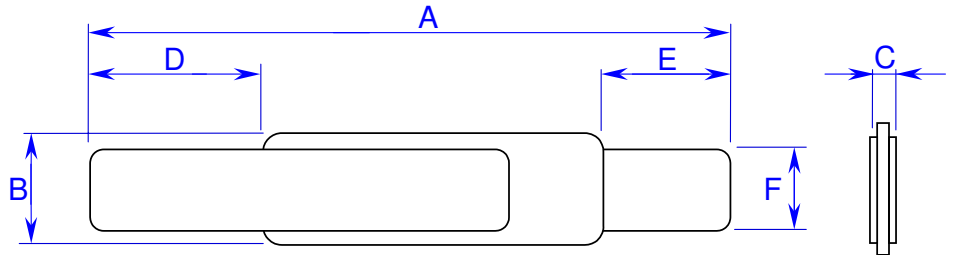
**Maximum Electrical Rating**  
**Operating Voltage: 12Vdc**  
**Interrupt Current: 100A**

Leads: Nickel  
0.125mm nominal thickness

Tape: None

Solder: Lead-free

Marking: None



**TABLE I. DIMENSIONS:**

	A		B		C		D		E		F	
	MIN	MAX	MIN	MAX	MIN	MAX	MIN	MAX	MIN	MAX	MIN	MAX
mm:	23.0	24.5	2.9	3.1	---	0.7	5.2	7.5	4.3	5.7	2.4	2.6
in*:	(0.91)	(0.96)	(0.11)	(0.12)	--	(0.03)	(0.20)	(0.30)	(0.17)	(0.22)	(0.09)	(0.10)

\*Rounded off approximation

**TABLE II. PERFORMANCE RATINGS: As measured in Mueller Kelvin Clips model BU-75K.**

I HOLD	CURRENT TRIP LIMITS								TIME TO TRIP		REFERENCE RESISTANCE		ONE-HOUR POST-TRIP RESISTANCE		TRIPPED-STATE POWER DISSIPATION
	AMPS 25°C HOLD		AMPS AT 0°C AT 25°C		AMPS AT 60°C AT 25°C		AMPS AT 80°C AT 25°C		SECONDS AT 25°C, 8.75A		OHMS AT 25°C		OHMS AT 25°C		WATTS AT 25°C, 12V MAX
	HOLD	TRIP	HOLD	TRIP	HOLD	TRIP	HOLD	TRIP	MIN	MAX	MIN	MAX	MIN	MAX	
1.75	2.4	5.6	1.75	4.2	0.8	2.0	---	---	---	5	0.017	0.031	0.017	0.062	1.4

Agency Recognitions: UL, TUV, CSA  
 Reference Documents: PS300  
 Precedence: This specification takes precedence over documents referenced herein.  
 Effectivity: Reference documents shall be the issue in effect on the date of invitation for bid.  
 CAUTION: Operation beyond the rated voltage or current may result in rupture, electrical arcing or flame.

**Materials Information:**

**ROHS Compliant**

Directive 2002/95/EC  
Compliant

**ELV Compliant**

Directive 2000/53/EC  
Compliant

**Pb-Free**

