

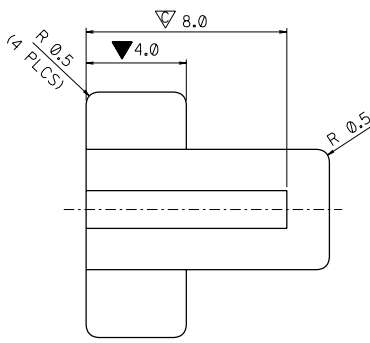
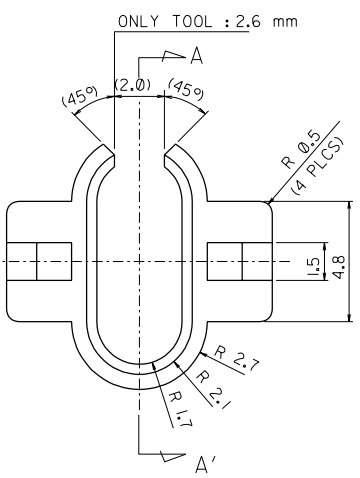
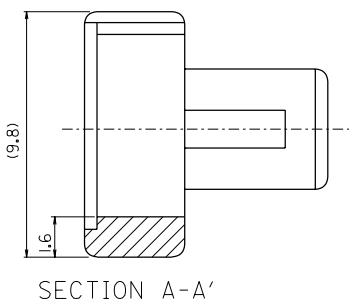
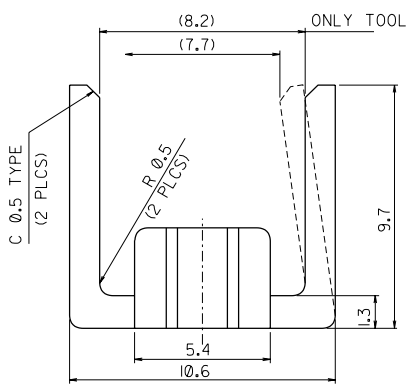
DO NOT SCALE DRAWING DIMENSION IN METRIC

PROJECT NO.

SIMILAR ITEM

EDP NO. 35-130-0001

ENG. NO 35130-0001



NOTE

1. MATERIAL : UNFILLED POLYESTER UL94-V0 IMPACT RESISTANT GP 2150-8133.
2. COLOR : BLACK..
3. UNLESS OTHERWISE SPECIFIED ALL CORNERS MAY HAVE A 0.13 RADIUS OR FILLET.
4. ENGRAVING TO BE 1.0 LETTER SIZE CHARACTERS RAISED 0.13.
5. FLISH AND BURR TO BE 0.2mm.
6. **▼** MEANS CRITICAL DIMENSION AND SHOULD BE CONTROLLED WITHIN 65% OF GIVEN TOLERANCES.
7. **▽** MEANS MAJOR DIMENSION.

ASS'Y PART		QTY/REEL OR PACK	SURFACE AREA	MATERIAL		WIRE RANGE	GENERAL TOLERANCES	MOLEX-KOREA CO.,LTD.
DESCRIPTION	ENG. NO.	---	--- MM <sup>2</sup>	LUPOX GP 2150 (PBT)		AWG: ---	DIM. : ±0.2 ANGLE : ±0.2°	
FEMALE HSG	E 35130-0201			DIMENSION CLASSIFICATION		MM <sup>2</sup> : ---	REVISE ONLY ON CAD SYSTEM	
		DIE NO. 35130	LAYOUT NO. ---	■▼ : CRITICAL    ☒ : MAJOR □ : MINOR        ( ) : REFERENCE		INSULATION RANGE	TITLE: TPA FOR 2CKTS HORN CONN.	
		WIRE CRIMP WIDTH ---	INS. CRIMP WIDTH ---	DRAWN BY C.Y.CHO	CHK'D BY	---	ENG. NO. E 35130-0001	
		WBDW ---	IBDW ---	APP'D BY	SCALE CAD 5:1			REV A