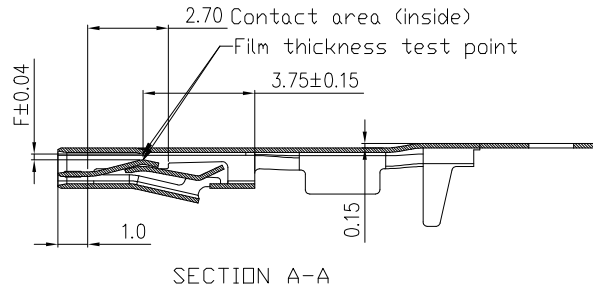
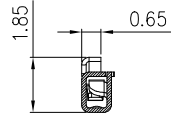


PART NUMBER

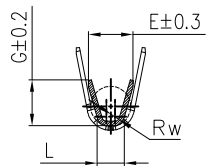
10153126-YXZLF



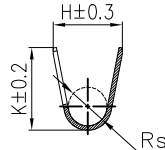
SECTION A-A



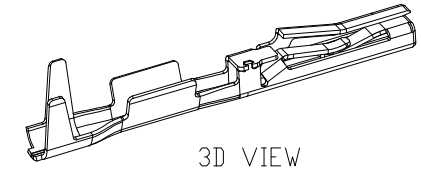
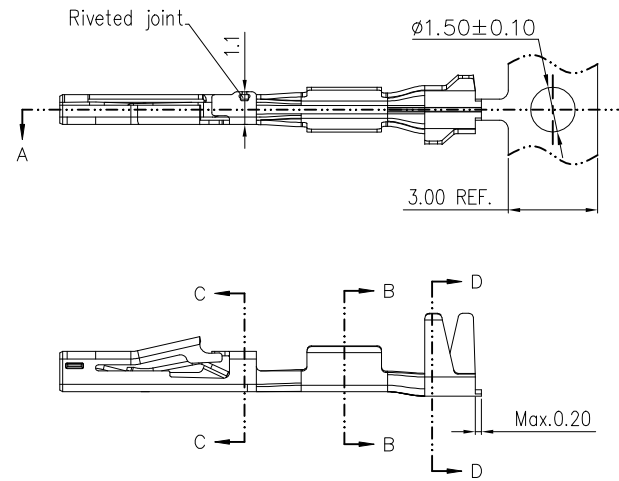
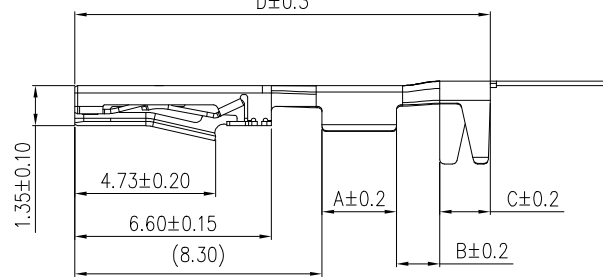
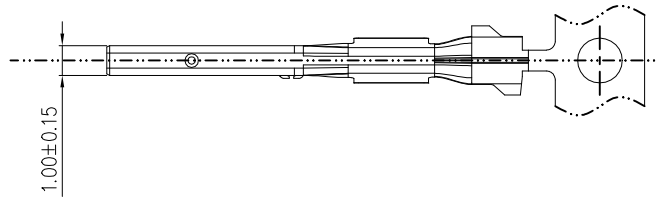
SECTION C-C



SECTION B-B



SECTION D-D



3D VIEW

NOTES:

- MATERIAL: C7025 TM03, T=0.15±0.01mm. C7025 TM00(GOLD PLATED), T=0.15±0.01mm.
- FINISHED: REFER TO P/N SYSTEM.
- UNLESS OTHERWISE SPECIFIED, ALL INNER RADII ARE R0.10mm.
- DIMENSIONING SHALL BE INTERPRETED PER ASME Y14.5-2009.
- PART NUMBER: 10153126 - X Y Z LF

CONTACT PLATING:

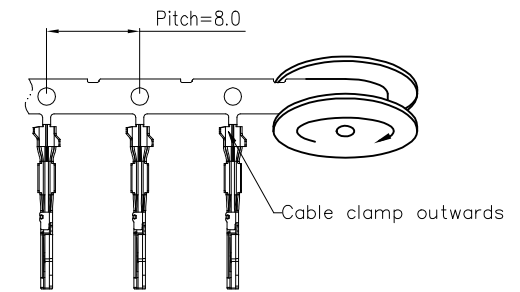
- 0=Full Tin 1~2.5um Plated
- 1=0.15um Gold on mating area
- 2=0.375um Gold on mating area with lubrication
- 3=0.75um Gold on mating area with lubrication
- 4=Full Reflow Tin 1~2.5um Plated Cu underplated.
- 5=Full Reflow Tin 1~2.5um Plated Ni under plated

FOR CUSTOMER CODE

- WIRE SIZE RANGE:
- 1=0.13 to 0.17mm²
 - 2=0.22 to 0.35mm²

TERMINAL TYPE :

- C=TYPE A (MEET USCAR V1 LEVEL)
- T=TYPE B (MEET USCAR V2 LEVEL)



After stamping and plating

10153126-XY2	0.22 to 0.35	A=2.50	Rw=0.3	Rs=1.0 H=1.9 K=1.9	0.20
		B=1.45	E=1.7		
		C=1.7	G=1.5		
		D=13.95	L=1.05		
10153126-XY1	0.13 to 0.17	A=2.50	Rw=0.3	Rs=0.9 H=1.9 K=1.8	0.20
		B=1.45	E=1.6		
		C=1.7	G=1.15		
		D=13.95	L=0.9		
PART NUMBER	WIRE SIZE RANGE [mm ²]	LENGTH	DRAHTCRIMP WIRE CRIMP [mm]	SO CRIMP INSULATION CRIMP [mm]	F [GAP]

mat'l. code				surface	tolerance	projection	product family
				ISO 1302	ISO 406/ISO 1101		HPL649
itr				tolerances unless otherwise specified			title
A	ELX-N-37059	NICK	08/26/19	angle	.0±.5	mm	CABLE TERMINAL
B	ELX-N-37059	DW	5/25/2020	tolerance	.00±.25	mm	WireLock® Series Cable Kits
C	ELX-N-37519	DW	6/29/2020	0°±2°	.000±.010	scale 1:1	
D	ELX-N-38784	DW	10/30/2020	dr	NICK ZHANG	05/22/19	dwg no
E	ELX-N-40676	DW	04/14/2021	eng	NICK ZHANG	05/22/19	sheet 1 of 1
F	ELX-N-48941	JW.Z	08/03/2023	chr	ZK HU	05/22/19	size
				appd	TIM YAO	05/22/19	10153126
				Amphenol FCI			A4
				type			Product Customer Drawing
sheet index	revision	F	1				