



L.T.F.

DOB AC Line Voltage LED Boards



Dimmable 17W Round 100mm (OD) QLUXDOBAR10017W42LED DOB Series

QLUX DOB



| | |
|-------------------------|------------------|
| Wattage | 17W |
| Input | 120V AC 50/60 Hz |
| CRI | 90+ |
| CCT Options | 2700K - 5000K |
| Custom CCT | Available |
| Size | 100mm (OD) |
| Dimming | ELV, Triac |
| Optional Dimming | 0-10V |
| Beam Angle | 160° |



RoHS



FCC Part 15
Class B compliant



FEATURES

- Exceeds California Title 24 requirements
- AC line voltage driver on board module;
No external drivers or transformers required
- High efficacy lumen output: > 85 lm/W
- Smooth dimming with ELV & Triac dimmers
- Dimming range <1% - 100%
- Optional 0-10V dimming
- 220-240V, 277V AC input with optional voltage converter
- LM-80 compliant LEDs

- High Color Renedering Index (CRI) 90+
- Tight binning 3 Step Mac Adam Ellipses
- Low heat generation, easy thermal management
- L70 > 60,000 Hours



APPLICATIONS

- New or retrofit OEM fixtures
- Indoor or outdoor applications
- Architectural and commercial
- Flush mount and recessed fixtures



AVAILABLE CONFIGURATIONS

| Model | Suffix | CRI | CCT | Lumens |
|----------------------|--------|-----|-------|--------|
| QLUXDOBAR10017W42LED | - 927 | 90+ | 2700K | 1400lm |
| QLUXDOBAR10017W42LED | - 930 | | 3000K | 1446lm |
| QLUXDOBAR10017W42LED | - 940 | | 4000K | 1530lm |
| QLUXDOBAR10017W42LED | - 950 | | 5000K | 1620lm |

Custom CCT available

[1] Luminous flux and efficacy are typical value, measured by an integrated sphere at 25°C, tolerance: ± 10%;

[2] Ra/CRI is measured with tolerance: ± 2;

[3] Tolerance of power: ± 1W.

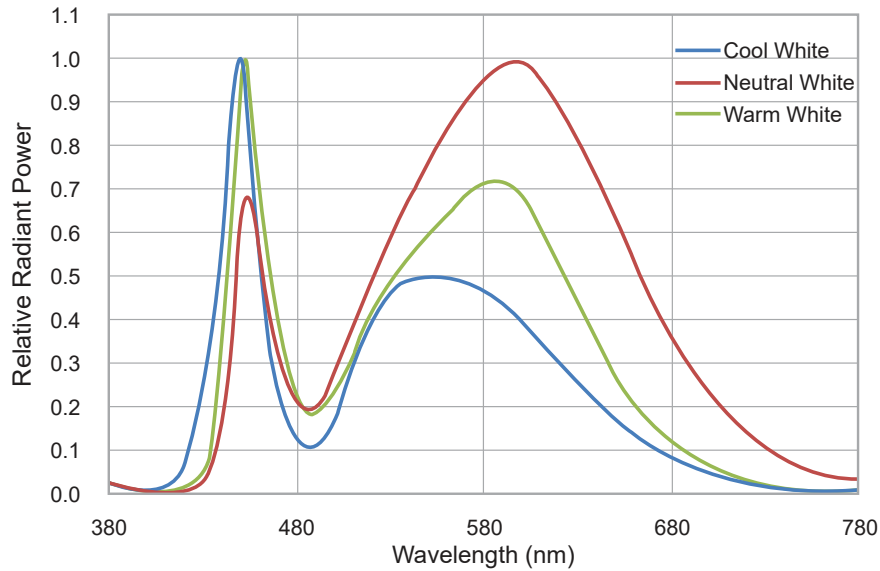


L.T.F.

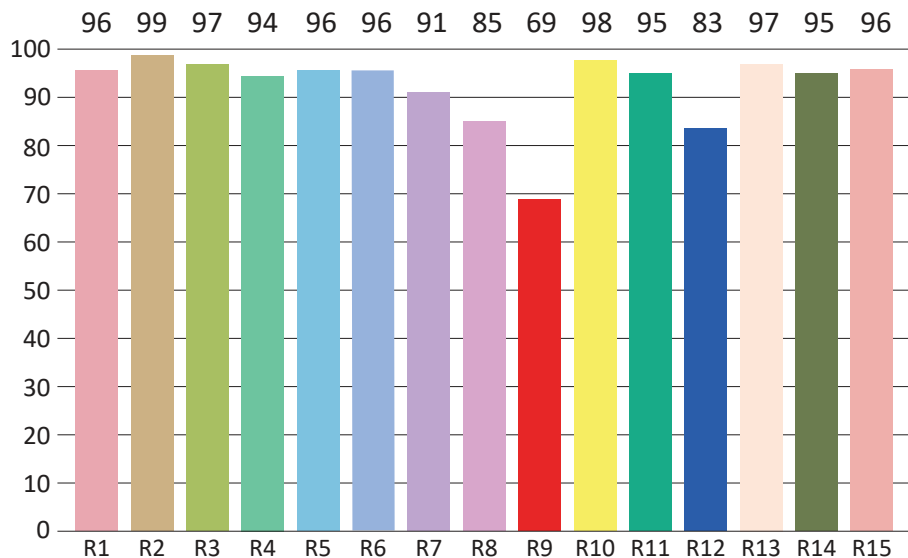
DOB AC Line Voltage LED Boards

**Dimmable 17W Round 100mm (OD)
QLUXDOBAR10017W42LED DOB Series**

SPECTRORADIOMETRIC CHARACTERISTICS



CRI TEST RESULTS



| | | | | | | | |
|---------|----------|----------|----------|----------|----------|----------|---------|
| R1 = 96 | R2 = 99 | R3 = 97 | R4 = 94 | R5 = 96 | R6 = 96 | R7 = 91 | R8 = 85 |
| R9 = 69 | R10 = 98 | R11 = 95 | R12 = 83 | R13 = 97 | R14 = 95 | R15 = 96 | |

* Test results based on 3000K CCT model



L.T.F.

DOB AC Line Voltage LED Boards

**Dimmable 17W Round 100mm (OD)
QLUXDOBAR10017W42LED DOB Series**

ABSOLUTE MAXIMUM RATINGS (Ta=25°C)

| Parameter | Symbol | Value | Unit |
|------------------------|--------|----------|------|
| Voltage | V in | 132 | Vac |
| Operating Temperature | --- | -35~+50 | °C |
| LED Solder Temperature | Ts | 110 | °C |
| Storage Temperature | Tstg | -40~+100 | °C |
| ESD Sensitivity (HBM) | --- | ±4000 | V |
| Surge | --- | 2500 | Vac |

MECHANICAL SPECIFICATIONS

