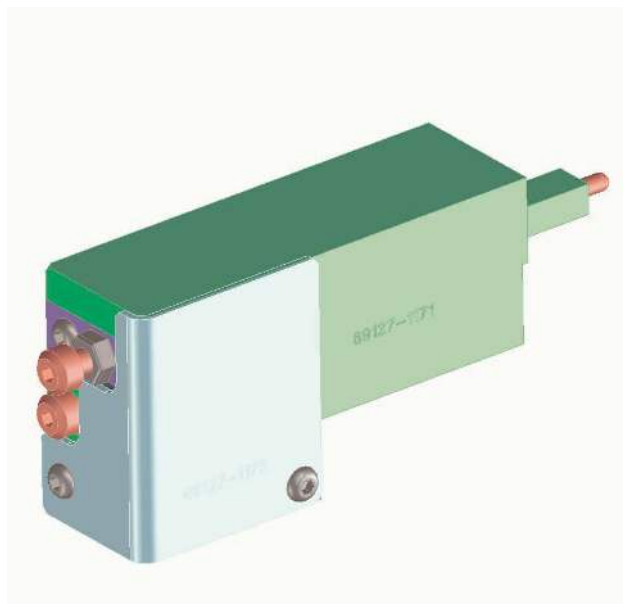




PB 15 PNEUMATIC TERMINATOR
69127-1170
FOR PB15 69127-1050 & 69127-1150



1 MACHINE DESCRIPTION

This sensor is used to detect cable insertion and trigger termination. This will prevent reject harnesses due to cable not being inserted deep enough.

2 FEATURES

1. Totally Pneumatic.
2. Adjustable triggering point.
3. Will fit on both left and right hand side of machine.
4. Sensor can be swapped for foot pedal (daisy chain).
5. Cable insertion triggers termination.
6. Cable Guide both sides.
7. Quick adjustment between circuit sizes.

WEIGHT : 0.75 Kg
DIMENSIONS : 115 X 430 X 390 HIGH
WORKING SERVICES : 6 BAR
ENGINEERING ORDER NUMBER : 69127-1170