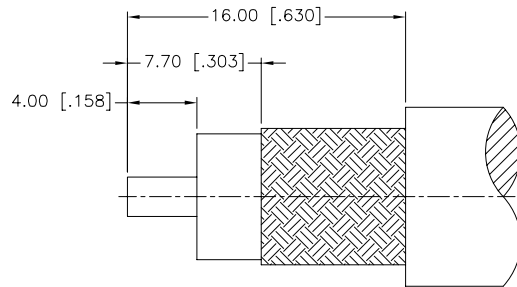
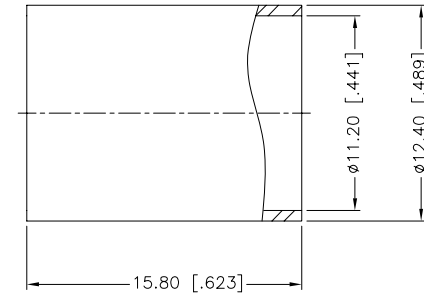
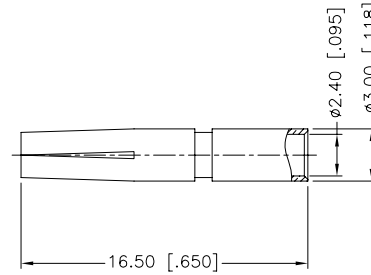
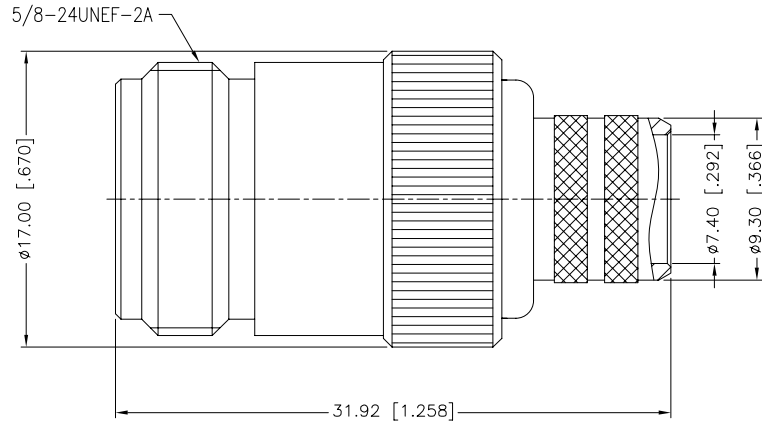


REV.	DATE	ECR NO.	DESCRIPTION
NC	09/15/09	XXXXXX	INITIAL RELEASE



RECOMMENDED  
CABLE STRIPPING DIM'S

NOTES:

1. CRIMPED FERRULE  
HEX CRIMP SIZE .429"
2. CRIMPED CONTACT PIN  
HEX CRIMP SIZE .100"

UNLESS OTHERWISE SPECIFIED DIMENSIONS ARE IN MILLIMETERS. DIMENSIONS IN [ ] ARE IN INCHES AND FOR CUSTOMER REFERENCE ONLY.

UNLESS OTHERWISE SPECIFIED TOLERANCES FOR MILLIMETERS ARE:  
0.5 - 8mm ± 0.20mm  
8 - 30mm ± 0.40mm  
30 - 120mm ± 0.50mm

UNLESS OTHERWISE SPECIFIED TOLERANCES FOR INCHES ARE:  
.020 - .315 = ± 0.007"  
.315 - 1.180 = ± 0.015"  
1.180 - 4.724 = ± 0.020"

DO NOT SCALE DRAWING

APPROVALS		DATE
DRAWN	J.CHENG	09/15/09
CHECKED		
ISSUED		
SHEET	1 OF 1	
CAD FILE	C:/CONNEX/172209.DWG	

# Amphenol Connex

PART DESCRIPTION			
N CRIMP JACK			
PART NO.			
172209			
DWG. NO.	REV.	SIZE	SCALE
172209.DWG	NC	A	NA

DESCRIPTION	MATERIAL	FINISH	QTY
5 FERRULE	BRASS	ALBALOY	1
4 CONTACT PIN	PHOSPHOR BRONZE	GOLD	1
3 BARREL	BRASS	ALBALOY	1
2 INSULATOR	PTFE	NATURAL	1
1 BODY	BRASS	ALBALOY	1