

## **TPS65835 System Evaluation Board**

This user's guide describes the characteristics, operation, and use of the TPS65835EVM-705 evaluation module (EVM). The TPS65835EVM-705 is a fully assembled and tested platform for evaluating the performance of the TPS65835 single-chip power management device. This document includes schematic diagrams, a printed circuit board (PCB) layout, bill of materials, and test data. Throughout this document, the abbreviations EVM, TPS65835EVM, and the term evaluation module are synonymous with the TPS65835EVM-705 unless otherwise noted.

### **Contents**

1	Introduction .....	3
	1.1 Features .....	3
	1.2 Applications .....	3
	1.3 Requirements .....	3
2	Electrical Performance Specifications .....	3
3	Schematic .....	4
4	Connector and Test Point Descriptions .....	5
	4.1 Headers and Switch .....	5
	4.2 Jumpers .....	6
	4.3 Test Points .....	6
5	Setup .....	6
6	TPS65835EVM Test Data .....	7
	6.1 Operation Waveforms .....	7
	6.2 Measured Data .....	13
	6.3 Thermal Performance .....	14
7	EVM Assembly Drawings and Layout .....	15
8	Bill of Materials .....	17

### **List of Figures**

1	Schematic .....	4
2	Boost Output Ripple : Vbat = 3.2 V and 1 mA Load on Boost .....	7
3	Startup : Vin = 5 V, 1 mA Load on Boost, and 15 mA Load on LDO .....	8
4	Shutdown : Vin = 5 V, 1 mA Load on Boost, and 15 mA Load on LDO .....	8
5	Startup : Vbat = 3.6 V, 1 mA Load on Boost, and 15 mA Load on LDO .....	9
6	Shutdown : Vbat = 3.6 V, 1 mA Load on Boost, and 15 mA Load on LDO .....	9
7	Switch node : Vbat = 3.6 V, No Load, 0.5 $\mu$ s/div.....	10
8	Switch node : Vbat = 3.6 V, No Load, 10 $\mu$ s/div .....	10
9	Load Transient, Boost : Vbat = 3.6 V with 0 mA to 5 mA Transient, Constant 15 mA Load on LDO. CH3 Bstout CH4 I <sub>BOOST</sub> .....	11
10	Load Transient, Boost : Vbat = 3.6 V with 5 mA to 0mA Transient, Constant 15 mA Load on LDO. CH3 Bstout CH4 I <sub>BOOST</sub> .....	11
11	Load Transient, LDO : Vbat = 3.6 V with 0 mA to 30 mA Transient. CH3 VLDO, CH4 IVLDO .....	12
12	Load Transient, LDO : Vbat = 3.6 V with 30 mA to 0 mA Transient. CH3 VLDO, CH4 I <sub>VLDO</sub> .....	12
13	H-Bridge Operation : Ch. 1 - LCLP, Ch 2 - LCLN, Ch 3 - LCRP, Ch 4 - LCRN.....	13
14	Load Regulation .....	13
15	Thermal Performance – Top Side .....	14

---

16	Thermal Performance – Bottom Side .....	15
17	Top Assembly – Silkscreen .....	15
18	Top Layer .....	16
19	Bottom Layer .....	16

**List of Tables**

1	Bill of Materials.....	17
2	Evaluation Materials.....	17

## 1 Introduction

The TPS65835 is a single-chip power management IC for active lens 3D glasses consisting of a battery charger with Power Path management for a single lithium-ion (Li-Ion) or lithium-polymer (Li-Polymer) or standard coin cell, a low drop out linear regulator (LDO), a boost converter, two H-bridges and an MSP430 Core.

### 1.1 Features

- Battery Charger
  - Power Path management
- Low Dropout Linear Regulator (LDO)
- Boost Converter
- Two H-Bridges
- MSP430 Core

### 1.2 Applications

- Active 3D glasses
  - Television
  - Computer
  - Handheld
  - Theater
  - Gaming

### 1.3 Requirements

In order to operate this EVM properly, the hardware must be connected and properly configured. All components and connectors are installed on the EVM as shipped, except the dc power supply.

## 2 Electrical Performance Specifications

Input Voltage  $V_{IN}$  3.7 to 6.4 V

Input Voltage  $V_{bat}$  BAT 2.5 to 6.4 V

Output Voltage LDO  $V_{LDO}$  2.2 (default) or 3 V

Output Voltage Boost  $BST\_OUT$  8 to 16 V, 10 V default

Charge Current  $I_{CHG} = K_{iset}/R_{iset}$  5 to 100 mA, 70 mA default

Input Voltage Low  $V_{IL}$  (SW\_SEL, VLDO\_SET) 0.4 V

Input Voltage High  $V_{IH}$  (SW\_SEL, VLDO\_SET) 1.2 V

3 Schematic

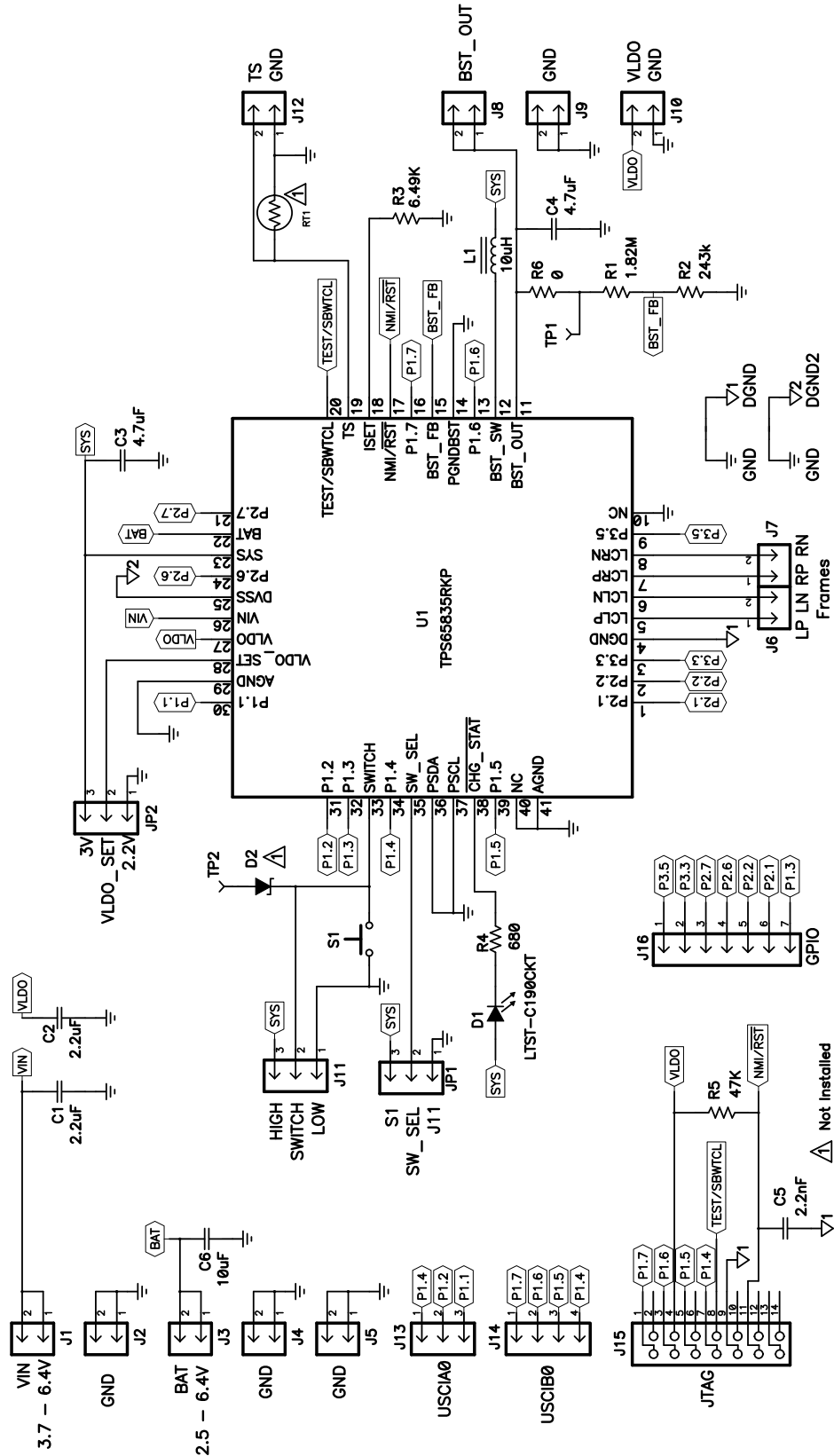


Figure 1. Schematic

## 4 Connector and Test Point Descriptions

### 4.1 Headers and Switch

#### J1 : VIN

J1 pin 1 and pin 2 are VIN of the TPS65835. Connect the VIN (Charger) power supply positive terminal to J1.

#### J2 : GND

J2 pin 1 and pin 2 are GND of the TPS65835. Connect the VIN (Charger) power supply negative terminal to J2.

#### J3 : BAT

J3 pin 1 and pin 2 are BAT of the TPS65835. Connect the second power supply (Battery)(capable of sinking current) positive terminal to J3.

#### J4 : GND

J4 pin 1 and pin 2 are GND of the TPS65835. Connect the second power supply (Battery)(capable of sinking current) negative terminal to J4.

#### J5 : GND

J5 pin 1 and pin 2 are GND of the TPS65835. These are provided as an extra set of ground terminals.

#### J6 : LP, LN

J6 pin 1 is LCLP, liquid crystal left positive, of the TPS65835 and pin 2 is LCLN, liquid crystal left negative, of the TPS65835. Connect the left lens across pin 1 and 2 of header J6.

#### J7 : RP, RN

J7 pin 1 is LCRP, liquid crystal right positive, of the TPS65835 and pin 2 is LCRN, liquid crystal right negative, of the TPS65835. Connect the right lens across pin 1 and 2 of the J7.

#### J8 : BST\_OUT

J8 pin 1 and pin 2 are BST\_OUT of the TPS65835. In a typical application, the boost will be loaded only through the h-bridge on pins LCLP, LPLN, LCRP, LCRN (J6, J7) by the liquid crystal lenses.

#### J9 : GND

J9 pin 1 and pin 2 are GND.

#### J10 : VLDO, GND

J10 pin 1 is GND and pin 2 is VLDO, the output of the TPS65835 LDO.

#### J11 (3-pin header): SWITCH, HIGH, LOW

J11 pin 1 is GND, pin 2 is the SWITCH pin of the TPS65835 and pin 3 is the SYS voltage output of the TPS65835. This header, J11, is to simulate the use of a slide switch and should only be used when JP1 pins 1 and 2 are shorted. If instead, a push-button switch is used, J11 should be left open and the push-button will pull SWITCH to GND when pressed and release (float) it otherwise (SWITCH has an internal pull-up only when JP1 pins 2 and 3 are shorted). Note there is an alternate configuration for J11.

#### S1: Push-Button Switch

S1 is the push-button switch connected to the SWITCH pin of the TPS65835. When the button on S1 is pressed, the SWITCH pin is connected to ground for the duration that the button is held. When the button is released, the SWITCH pin goes back up to SYS. S1 should only be used if JP1 is in the S1 position (pin 2 and pin 3 shorted of JP1).

#### J12 : TS, GND

J12 pin 1 is GND, pin 2 is the TS pin of the TPS65835. This header, J12, is to connect an external thermistor to the TPS65835 and should be left floating if not used.

#### J13 : GPIOs P1.1, P1.2, P1.4

J13 pin 1 is P1.4, pin 2 is P1.2 and pin 3 is P1.1 of the TPS65835 MSP430 core.

The functionality of these GPIOs is discussed in the TPS65835 datasheet and the MSP430x2xx family user's guide.

#### J14 : GPIOs P1.4, P1.5, P1.6, P1.7

J14 pin 1 is P1.7, pin 2 is P1.6, pin 3 is P1.5 and pin 4 is P1.4 of the TPS65835 MSP430 core. The functionality of these GPIOs is discussed in the TPS65835 datasheet and the MSP430x2xx family user's guide.

**J15 : J-TAG Connector for USB Programming Tool (MSP-FET430UIF)**

J15 is a keyed header for the MSP-FET430UIF USB Programming Tool.

**J16 : GPIOs P1.3, P2.2, P2.3, P2.6, P2.7, P3.3, P3.5**

J16 pin 1 is P3.5, pin 2 is P3.3, pin 3 is P2.7, pin 4 is P2.6, pin 5 is P2.3, pin 6 is P2.2 and pin 7 is P1.3 of the TPS65835 MSP430 core. The functionality of these GPIOs is discussed in the TPS65835 datasheet and the MSP430x2xx family user's guide.

## 4.2 Jumpers

**JP1 : SW\_SEL, S1, JP11**

JP1 pin 1 is GND, pin 2 is the SW\_SEL pin of the TPS65835 and pin 3 is the SYS voltage output of the TPS65835. Short pins 1 and 2 to use a slide switch on SWICTH pin of TPS65835 or short pins 2 and 3 to use the installed push-button switch S1 on SWITCH pin of TPS65835.

**JP2 : VLDO\_SET, 2.2V, 3.0V**

JP2 pin 1 is GND, pin 2 is the VLDO\_SET pin of the TPS65835 and pin 3 is the SYS voltage output of the TPS65835. Short pins 1 and 2 to set the LDO output voltage to 2.2V or short pins 2 and 3 to set the LDO output voltage to 3.0V.

## 4.3 Test Points

TP1 : When R5 is replaced with a 50-Ω resistor, TP1 is used to inject an AC signal which may be measured at BST\_OUT to verify frequency response and converter stability.

TP2 : When D2 is populated, TP2 can be used to connect a microcontroller GPIO to implement special push-button power/on power off timing.

## 5 Setup

Set the first input power supply voltage to 5 V before connecting the EVM then power it off. Connect the positive lead to J1, VIN. The power supply return lead is connected to J2 GND.

Set the second input power supply (capable of sinking capable of sinking at least 200 mA) to 3.6 V before connecting to the EVM then power it off. The positive lead is connected to J3, BAT. The power supply return lead is connected to J4, GND.

Apply 5V to the VIN input.

With JP2-VLDO\_SET set to 3.0V, verify with voltmeter that the VLDO output voltage is  $3V \pm 100\text{ mV}$ .

Position JP2 shorting jumper between VLDO\_SET and 2.2V. Verify with voltmeter that the VLDO output voltage is  $2.2V \pm 100\text{ mV}$ .

Verify that input current is less than 50mA with and input voltage of 5 V.

Verify JP1 is set with S1 and SWITCH shorted, press the push-button (S1) and verify with voltmeter that the output voltage is  $10V \pm 1\text{ V}$ .

Verify LCLP is toggling between  $10\text{ V} \pm 1\text{ V}$  and  $0V \pm 1\text{ V}$ .

Verify LCLN is toggling between  $10\text{ V} \pm 1\text{ V}$  and  $0V \pm 1\text{ V}$ .

Verify LCRP is toggling between  $10\text{ V} \pm 1\text{ V}$  and  $0V \pm 1\text{ V}$ .

Verify LCRN is toggling between  $10\text{ V} \pm 1\text{ V}$  and  $0V \pm 1\text{ V}$ .

Set input voltage supply capable of sinking at least 500mA on BAT to 3.6 V and power on.

Verify that input current is less than 200mA with input voltage of 5 V VIN power supply. Verify D1 lights up to indicate charging.

## 6 TPS65835EVM Test Data

This section presents typical performance data for the TPS65835EVM. Actual performance data can be affected by measurement techniques and environmental variables; therefore, these results are presented for reference and may differ from actual results obtained by some users.

### 6.1 Operation Waveforms

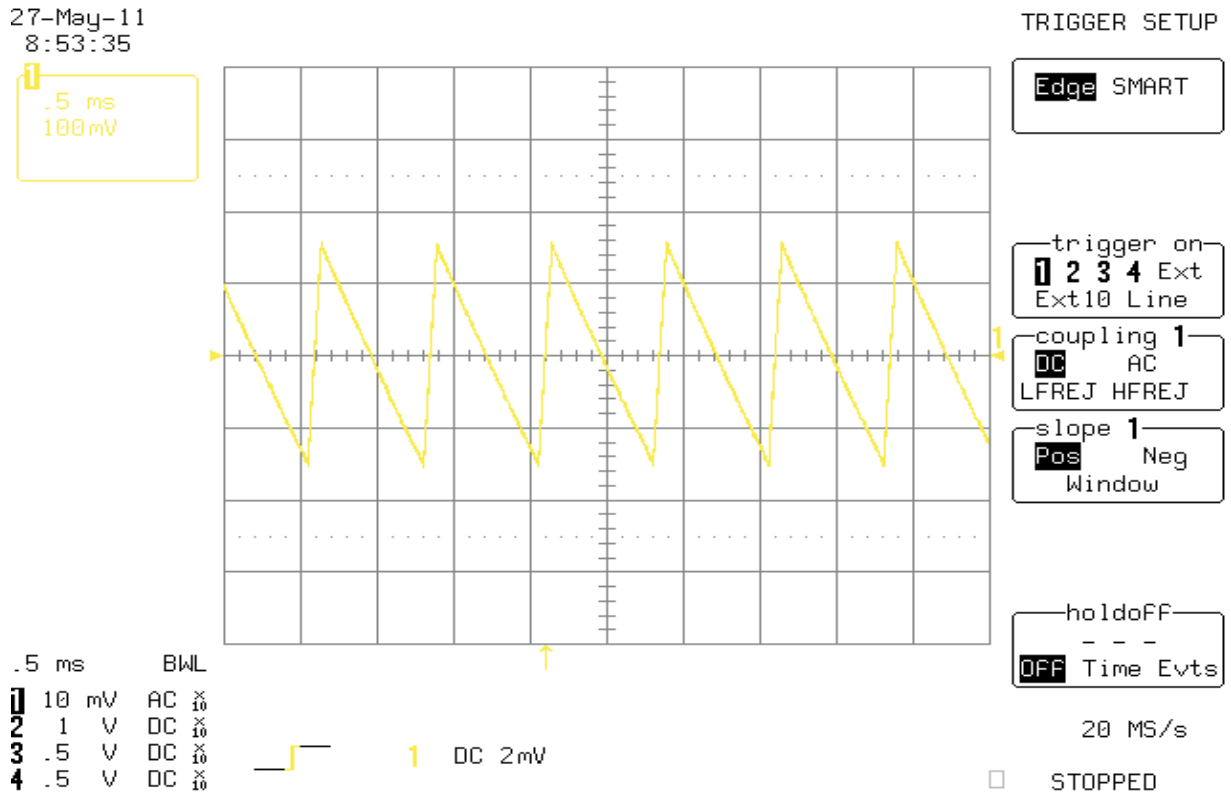


Figure 2. Boost Output Ripple : Vbat = 3.2 V and 1 mA Load on Boost

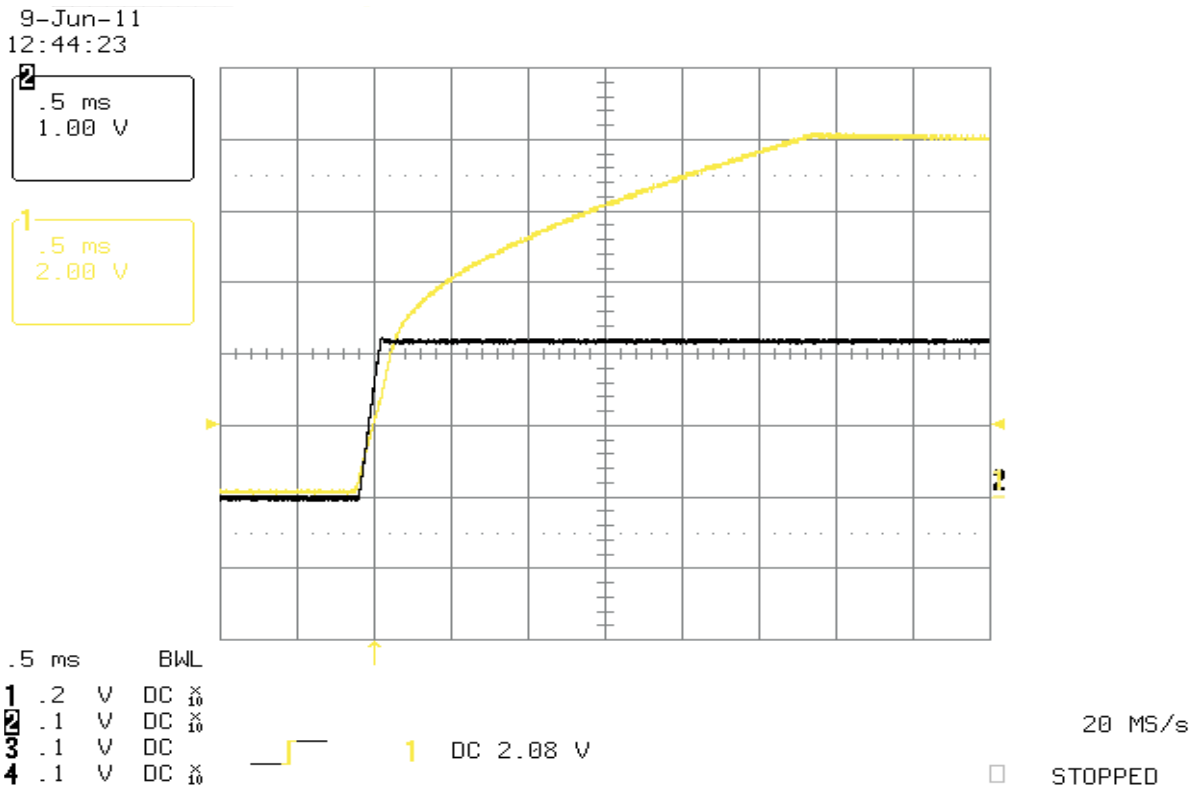


Figure 3. Startup : Vin = 5 V, 1 mA Load on Boost, and 15 mA Load on LDO

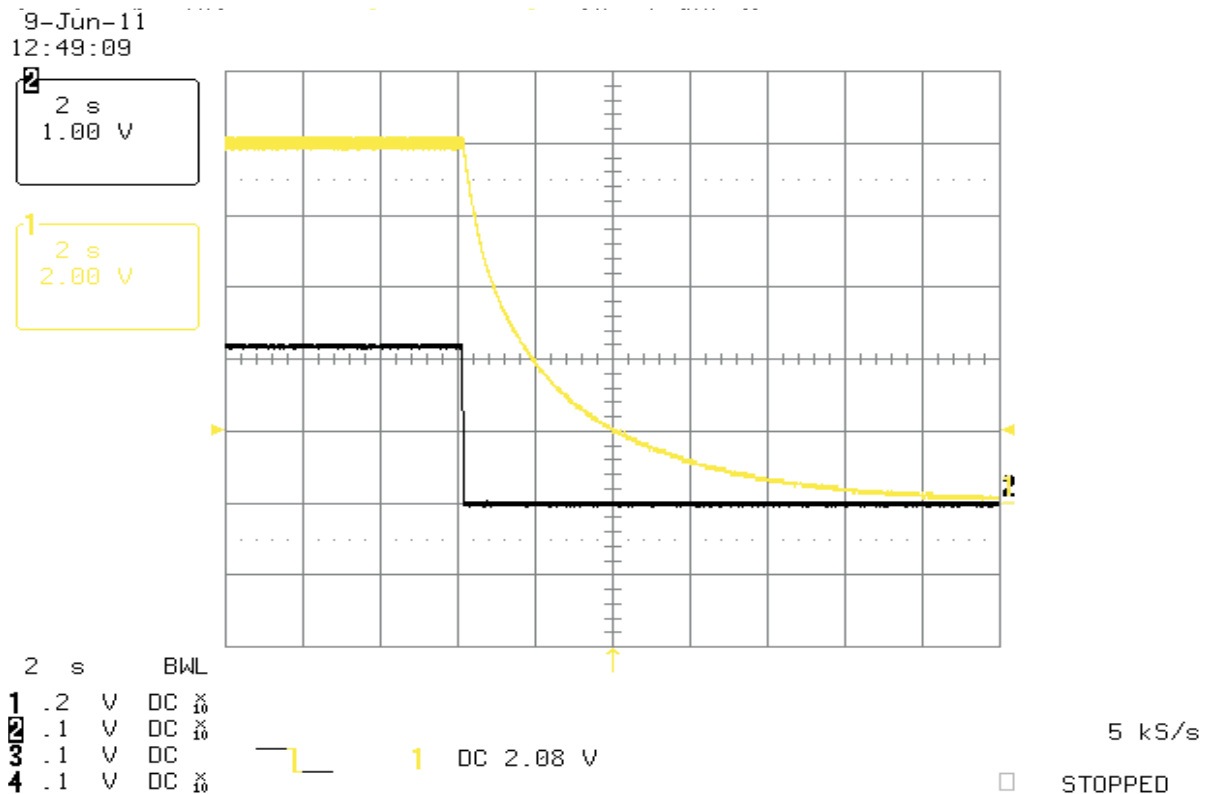


Figure 4. Shutdown : Vin = 5 V, 1 mA Load on Boost, and 15 mA Load on LDO



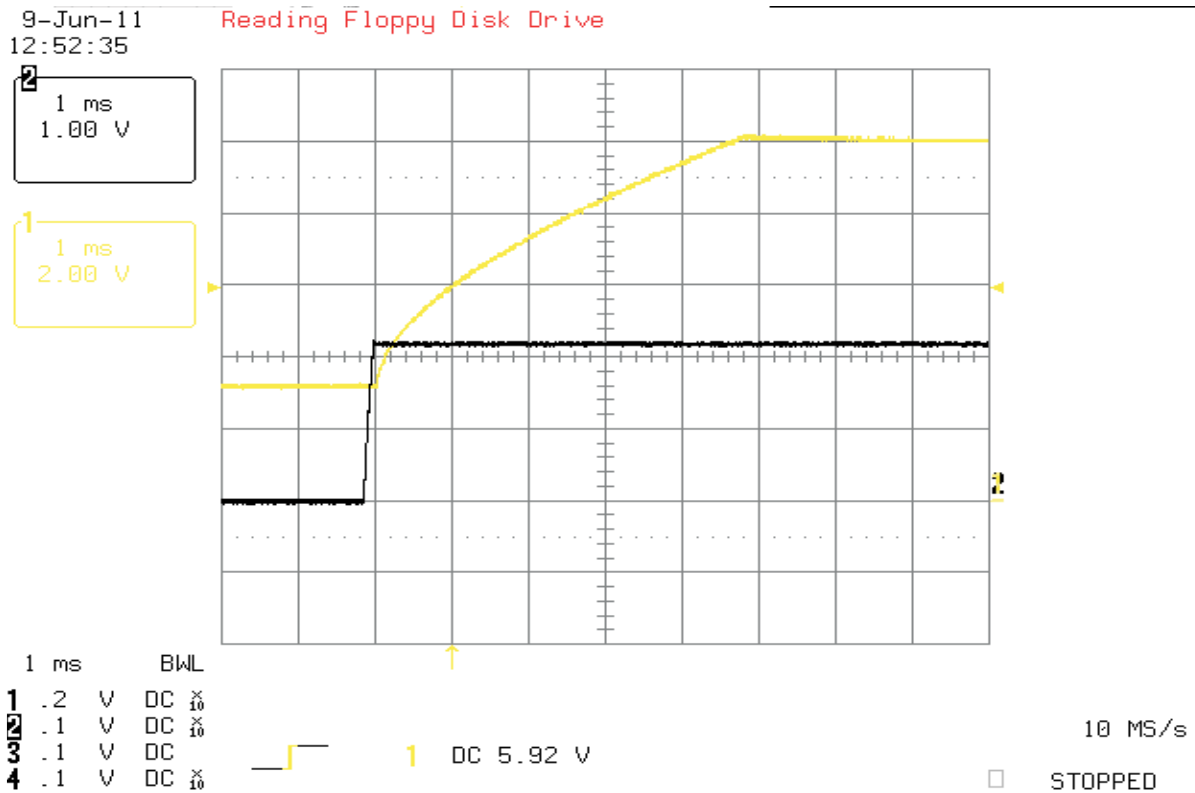


Figure 5. Startup : Vbat = 3.6 V, 1 mA Load on Boost, and 15 mA Load on LDO

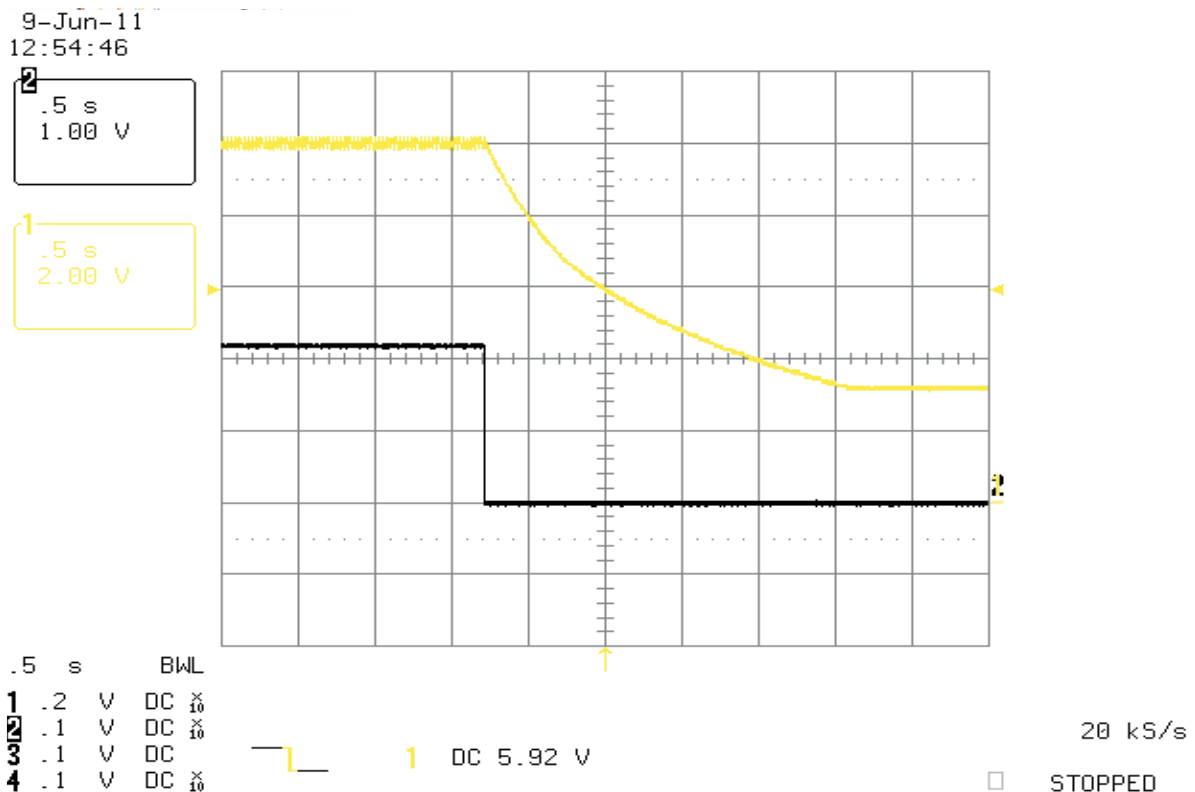


Figure 6. Shutdown : Vbat = 3.6 V, 1 mA Load on Boost, and 15 mA Load on LDO

2-Jun-11  
10:02:01

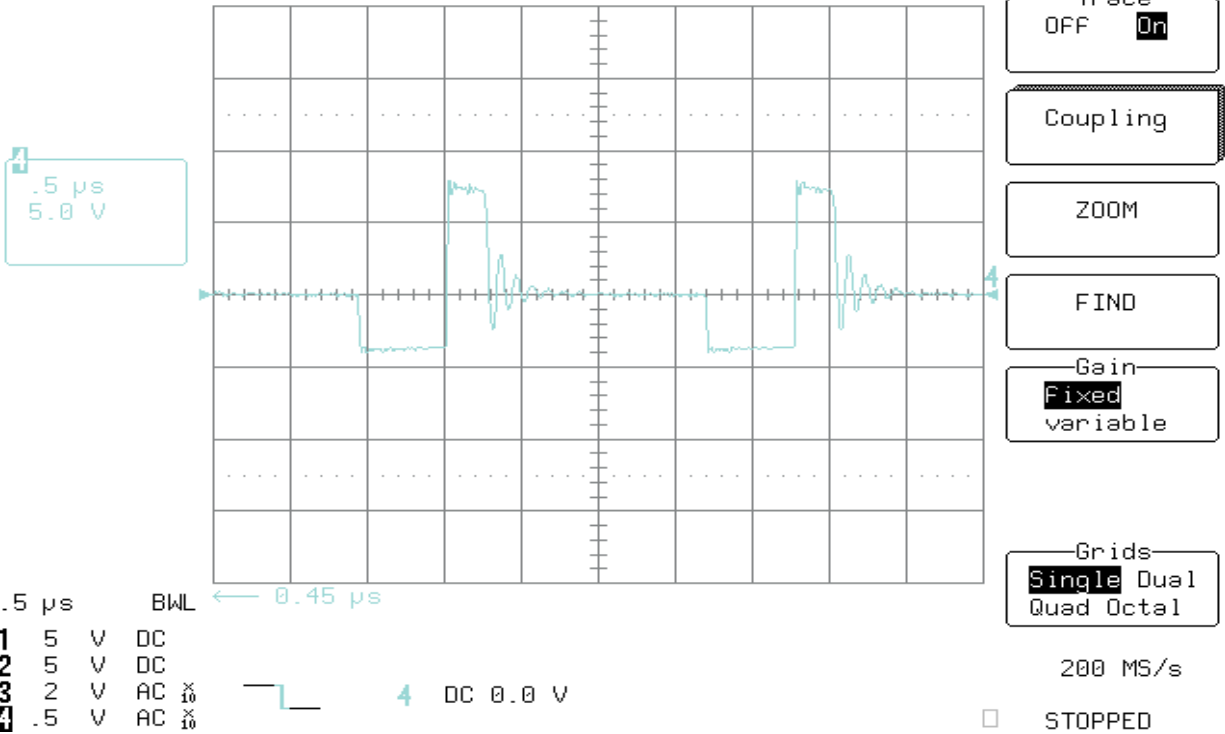


Figure 7. Switch node : Vbat = 3.6 V, No Load, 0.5 $\mu$ s/div

2-Jun-11  
10:00:10

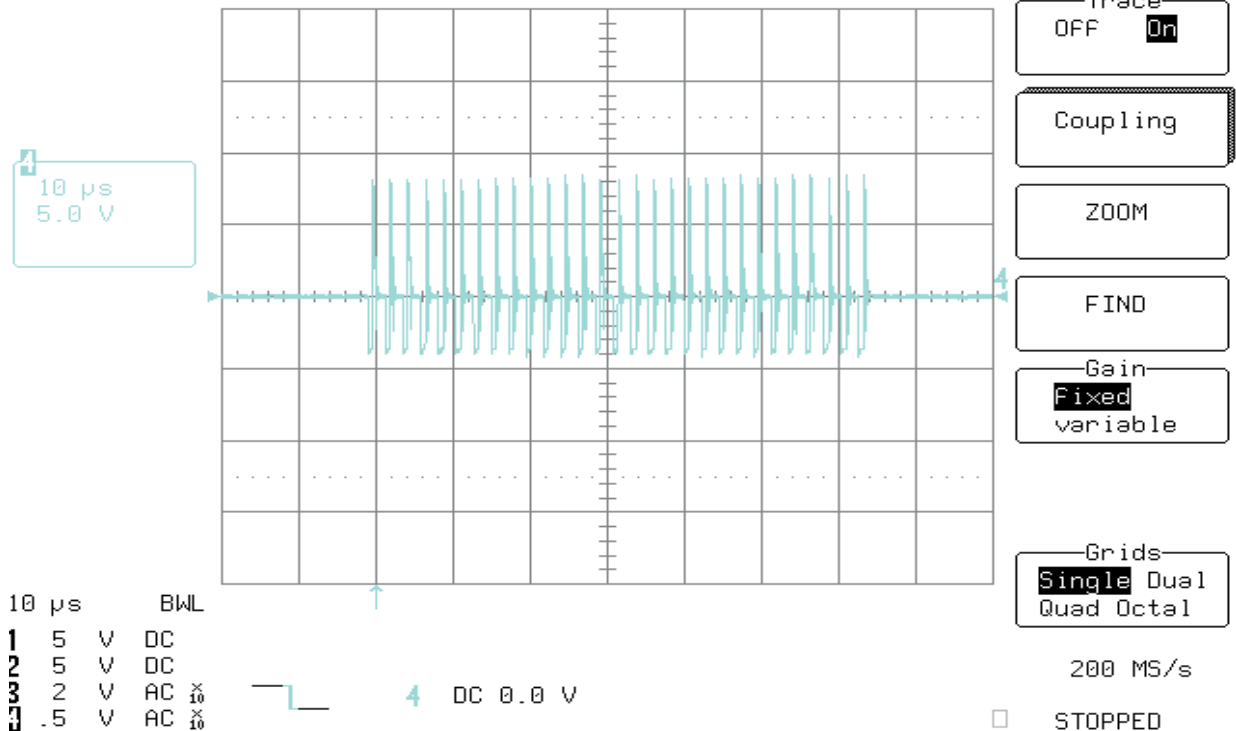


Figure 8. Switch node : Vbat = 3.6 V, No Load, 10  $\mu$ s/div

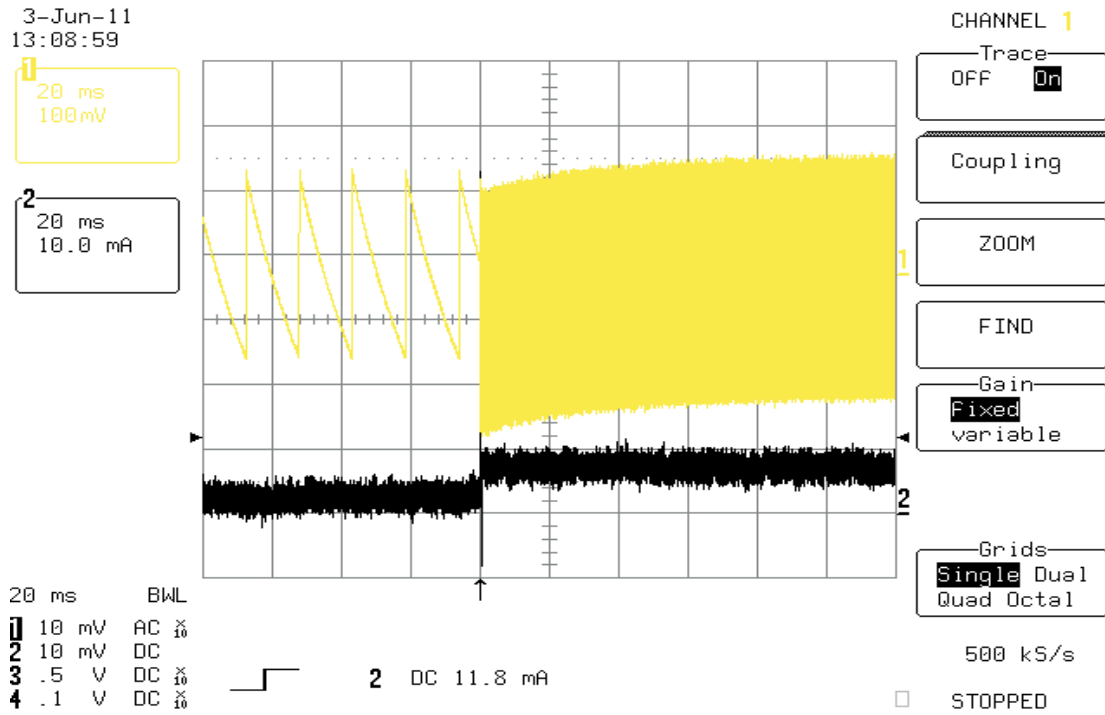


Figure 9. Load Transient, Boost : Vbat = 3.6 V with 0 mA to 5 mA Transient, Constant 15 mA Load on LDO. CH3 Bstout CH4 I<sub>BOOST</sub>

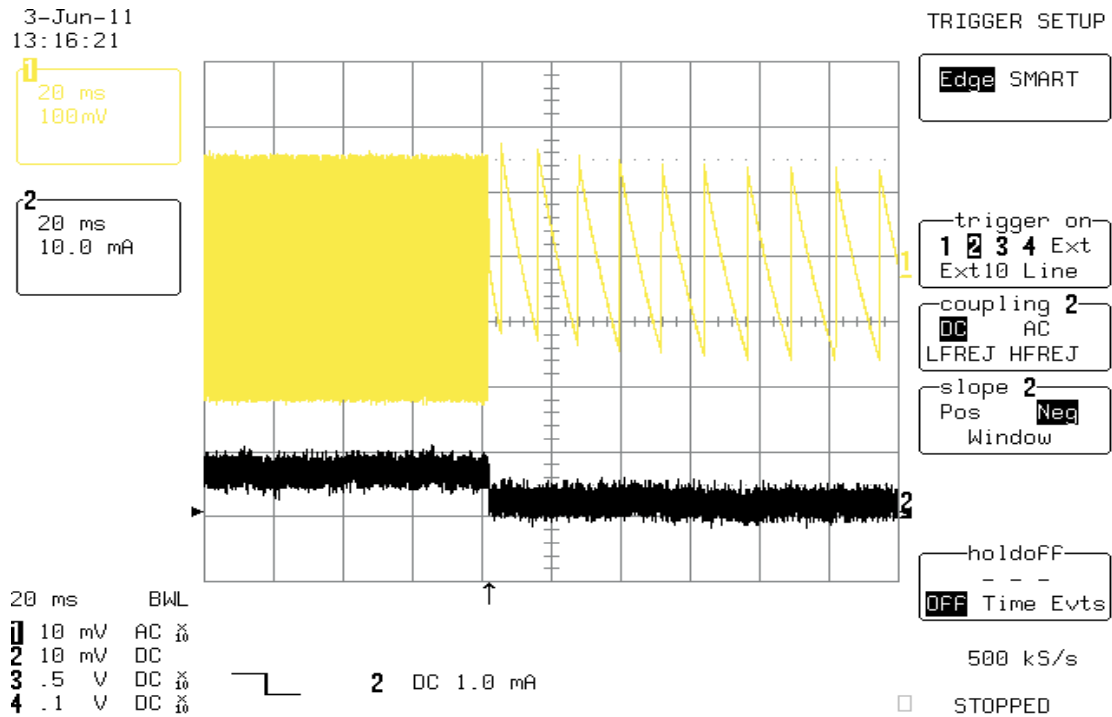


Figure 10. Load Transient, Boost : Vbat = 3.6 V with 5 mA to 0mA Transient, Constant 15 mA Load on LDO. CH3 Bstout CH4 I<sub>BOOST</sub>

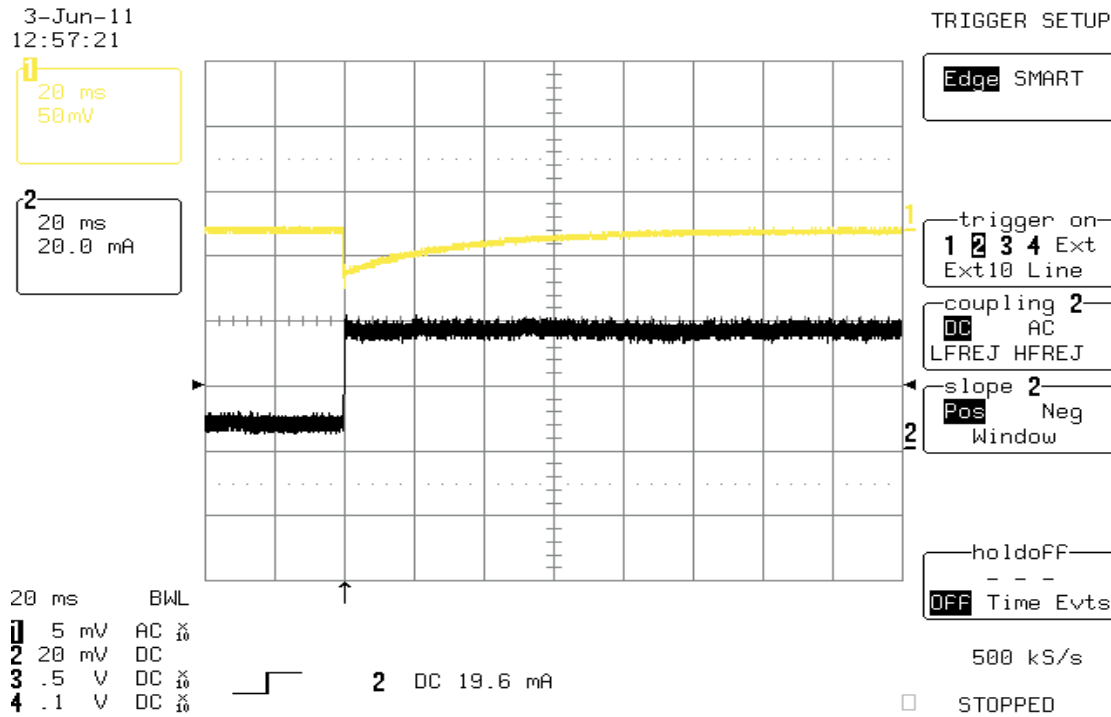


Figure 11. Load Transient, LDO : Vbat = 3.6 V with 0 mA to 30 mA Transient.  
CH3 VLDO, CH4 IVLDO

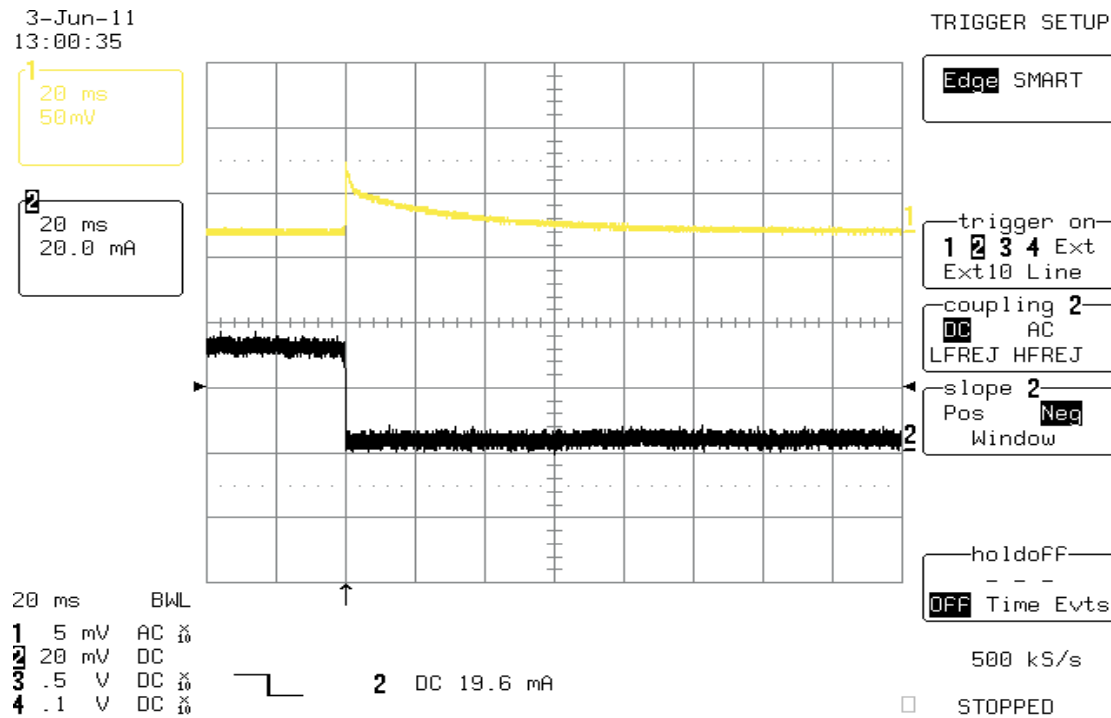


Figure 12. Load Transient, LDO : Vbat = 3.6 V with 30 mA to 0 mA Transient.  
CH3 VLDO, CH4 I<sub>VLDO</sub>

14-Jul-11  
14:04:52

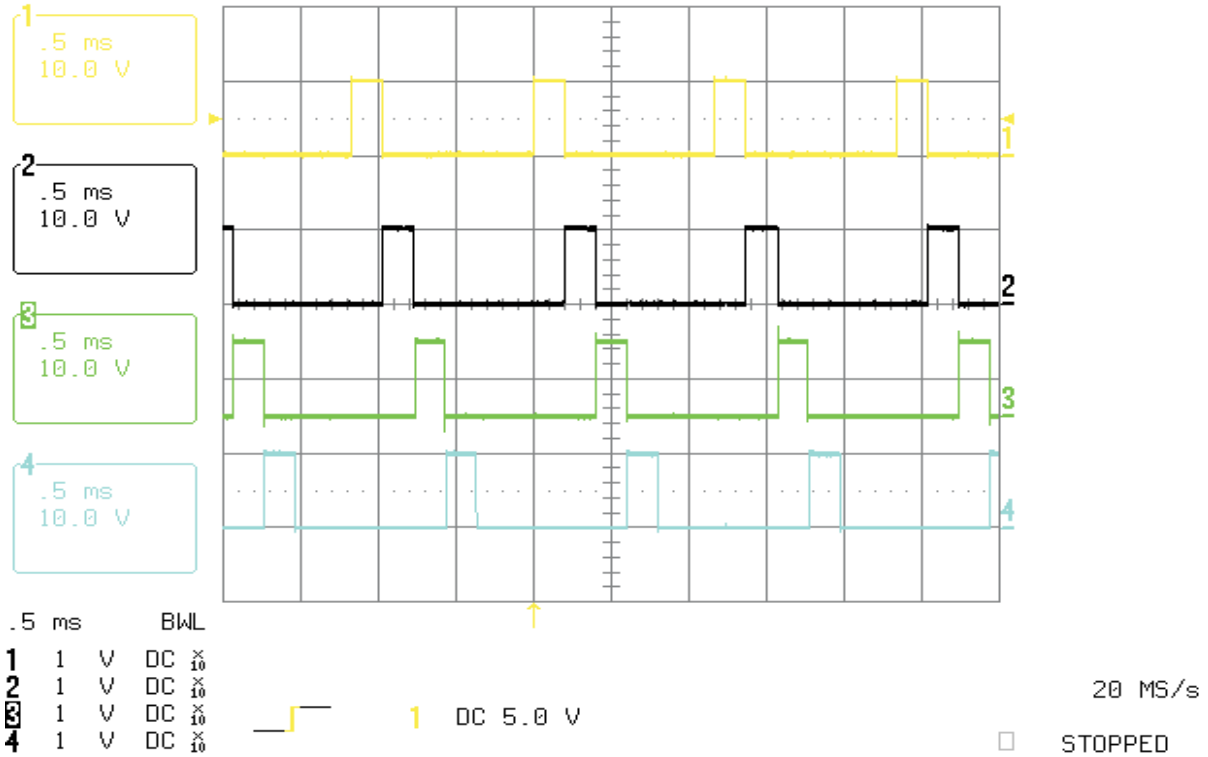


Figure 13. H-Bridge Operation : Ch. 1 - LCLP, Ch 2 - LCLN, Ch 3 - LCRP, Ch 4 - LCRN

## 6.2 Measured Data

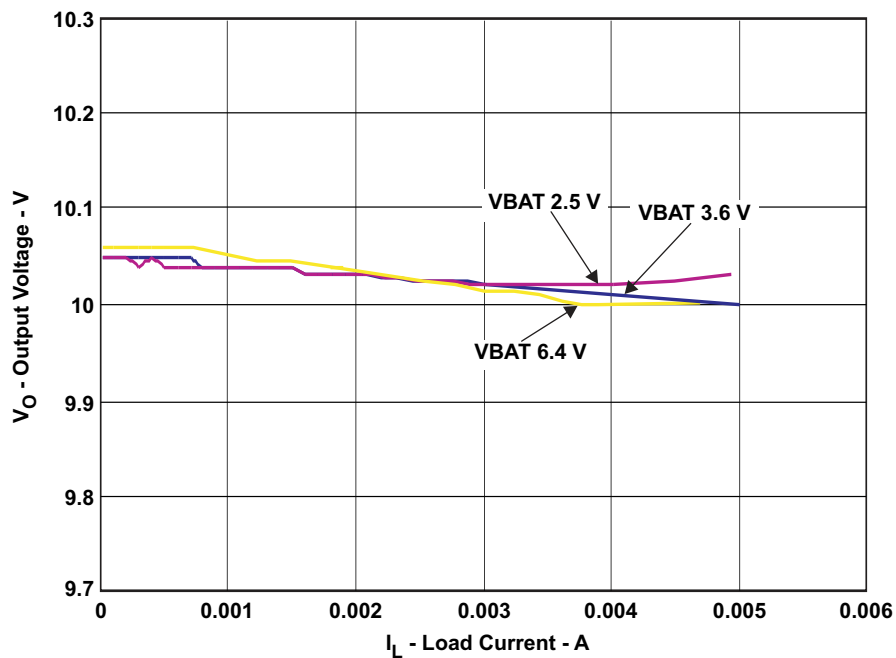


Figure 14. Load Regulation

### 6.3 Thermal Performance

Figure 15 and Figure 16 show the typical thermal performance for the TPS65835 for both the top side and the bottom side, respectively.  $V_{IN} = 5\text{ V}$ ,  $K_{ISET} = 6.49\text{ k}\Omega$ ,  $V_{BAT} = 3.6\text{ V}$ ,  $I_{LDO} = 30\text{ mA}$  and  $IBST\_OUT = 5\text{ mA}$ .

#### 6.3.1 Top Side

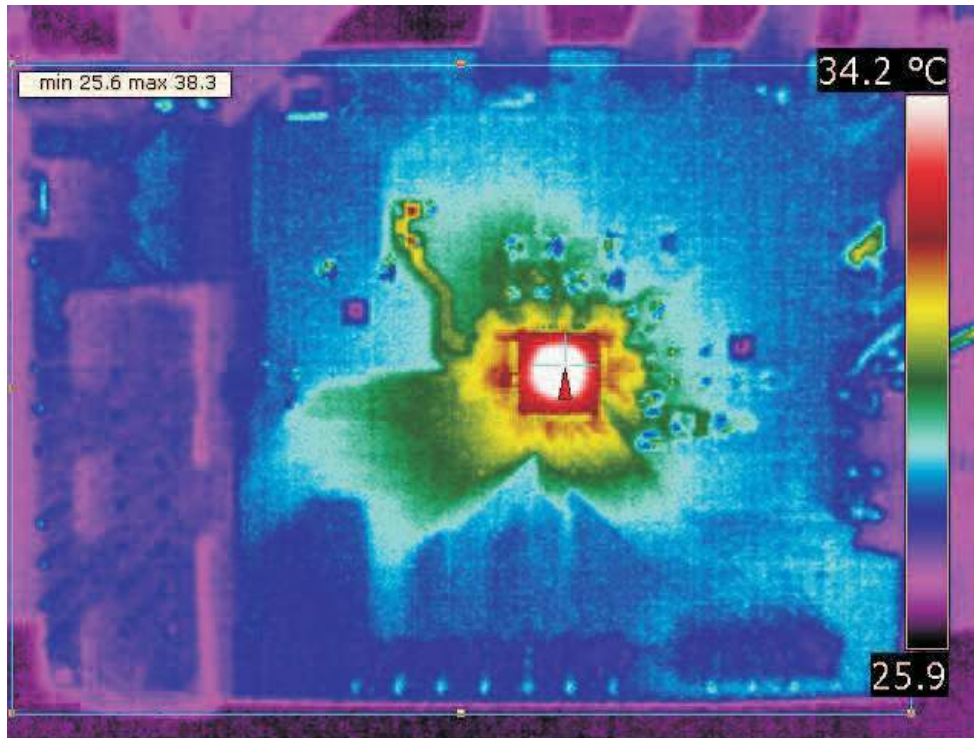


Figure 15. Thermal Performance – Top Side

6.3.2 Bottom Side

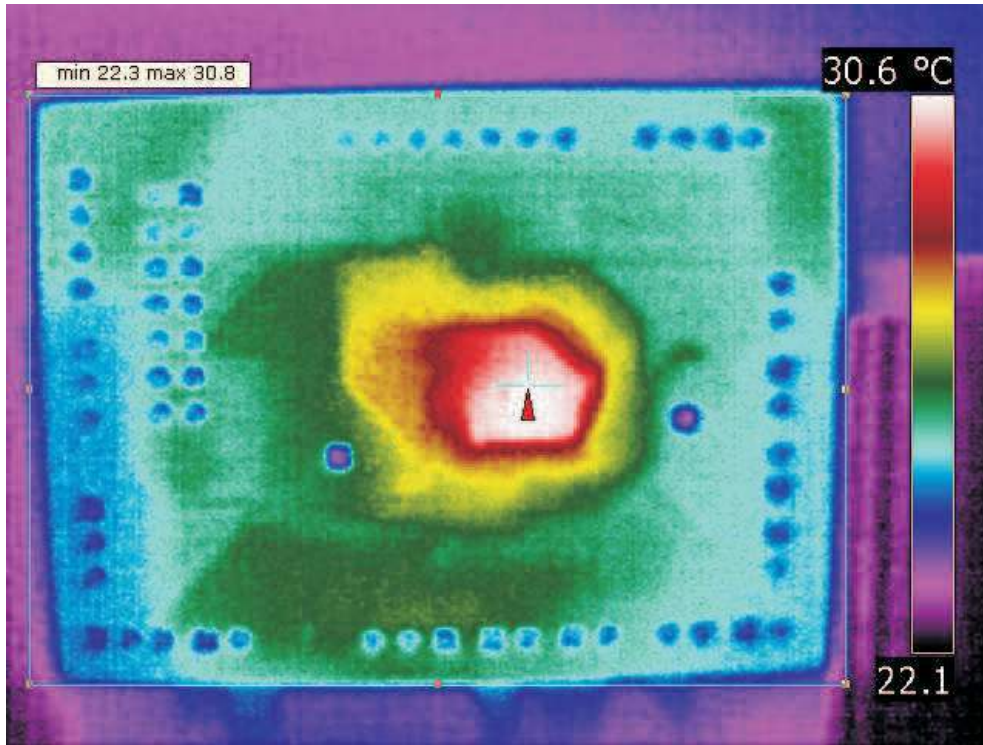


Figure 16. Thermal Performance – Bottom Side

7 EVM Assembly Drawings and Layout

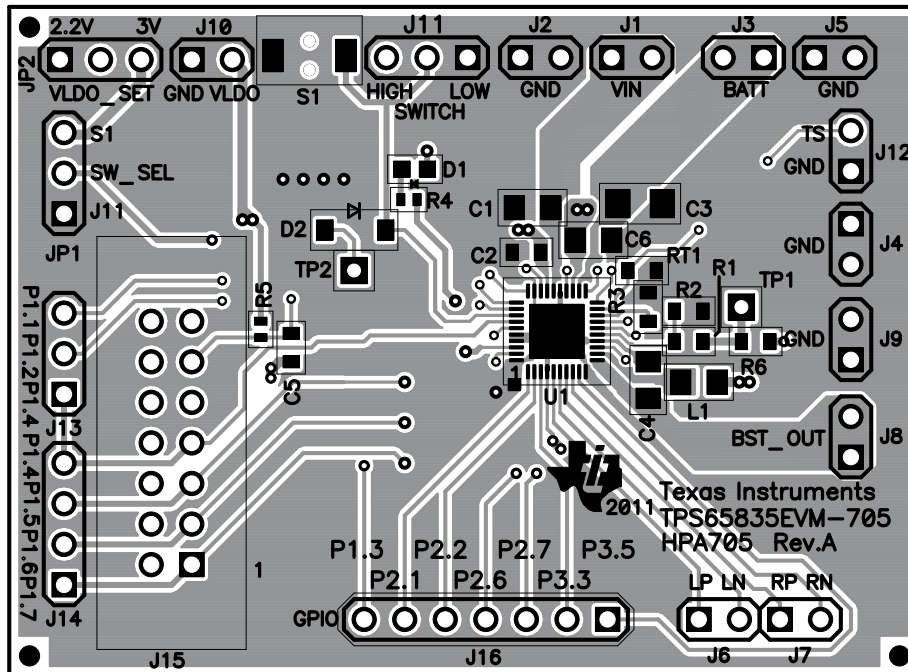


Figure 17. Top Assembly – Silkscreen

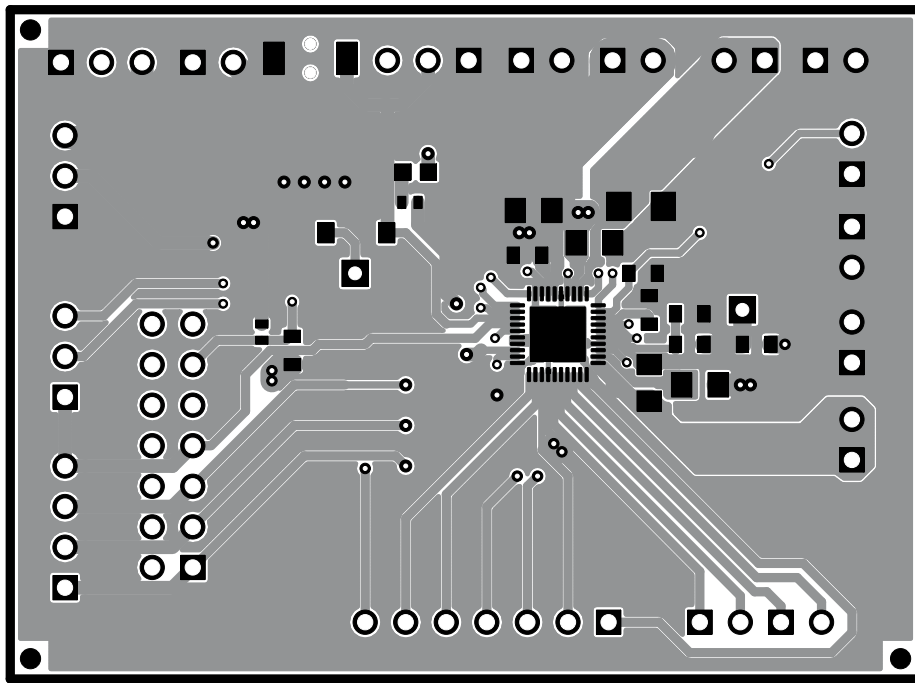


Figure 18. Top Layer

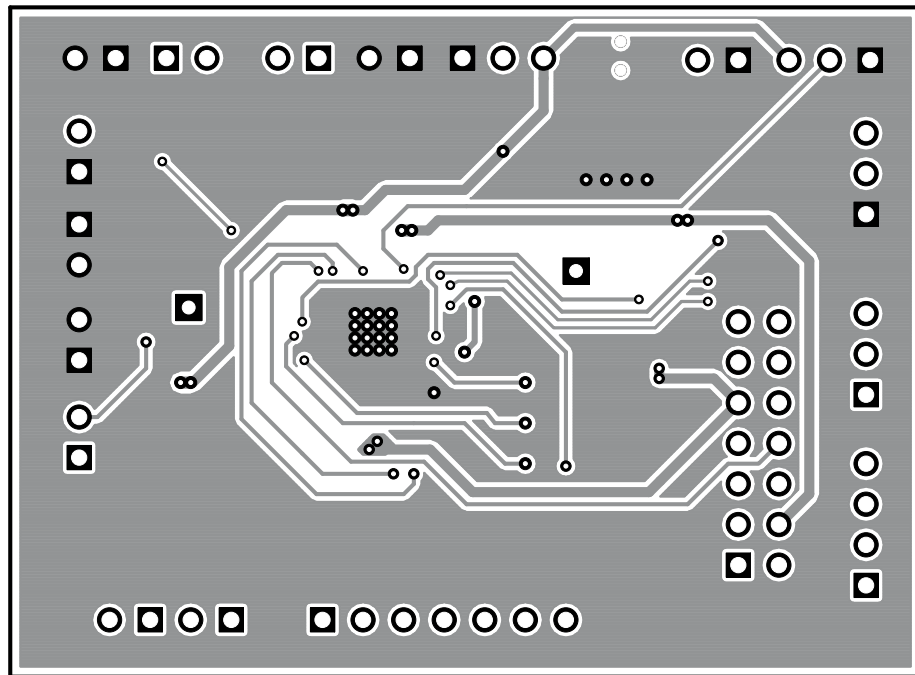


Figure 19. Bottom Layer



## 8 Bill of Materials

**Table 1. Bill of Materials**

Count	RefDes	Value	Description	Size	Part Number	MFR
1	C1	2.2 $\mu$ F	Capacitor, Ceramic, 25V, X5R, 10%	0805	GRM219R61E225KA12D	Murata
1	C2	2.2 $\mu$ F	Capacitor, Ceramic, 10V, X7R, 10%	0603	GRM188R71A225KE15D	Murata
1	C3	4.7 $\mu$ F	Capacitor, Ceramic, 10V, X7R, 20%	0805	C2012X7R1A475M	TDK
1	C4	4.7 $\mu$ F	Capacitor, Ceramic, 25V, X5R, 10%	0805	Std	Std
1	C5	2.2 nF	Capacitor, Ceramic, Low Inductance, 50V, X5R, 10%	0603	GRM188R61H222KA01B	Murata
1	C6	10 $\mu$ F	Capacitor, Ceramic, 16V, X5R, 20%	1206	Std	Std
1	L1	10 $\mu$ H	Inductor, 1.066Ohm , 350mA, 20%	0805	CBC2016T100M	Taiyo Yuden
1	R1	1.82M	Resistor, Chip, 1/16W, 1%	0603	Std.	Std
1	R2	243k	Resistor, Chip, 1/16W, 1%	0603	Std.	Std
1	R3	6.49K	Resistor, Chip, 1/16W, 1%	0603	Std	Std
1	R5	47K	Resistor, Chip, 1/16W, 5%	0402	Std	Std
1	S1	688-SKRELG	Switch, SPST, PB Momentary	0.140 X 0.173 inch	688-SKRELG	Alps
1	U1	TPS65835RKP	IC, Advance PMU for Active Shutter 3D Glasses	QFN-40	TPS65835RKP	TI

**Table 2. Evaluation Materials**

Count	RefDes	Value	Description	Size	Part Number	MFR
1	D1	LTST-C190CKT	Diode, LED, Red, 2.1-V, 20-mA, 6-mcd	0603	LTST-C190CKT	Lite On
0	D2	Open	Diode, Zener	SOD-123	STD	STD
11	J1-J10, J12	PEC02SAAN	Header, Male 2-pin, 100mil spacing,	0.100 inch x 2	PEC02SAAN	Sullins
2	J11, J13	PEC03SAAN	Header, Male 3-pin, 100mil spacing,	0.100 inch x 3	PEC03SAAN	Sullins
1	J14	PEC04SAAN	Header, Male 4-pin, 100mil spacing,	0.100 inch x 4	PEC04SAAN	Sullins
1	J15	N2514-6002-RB	Connector, Male Straight 2x7 pin, 100mil spacing, 4 Wall	0.100 inch x 2X7	N2514-6002-RB	3M
1	J16	PEC07SAAN	Header, Male 7-pin, 100mil spacing,	0.100 inch x 7	PEC07SAAN	Sullins
2	JP1, JP2	PEC03SAAN	Header, Male 3-pin, 100mil spacing,	0.100 inch x 3	PEC03SAAN	Sullins
1	R4	680	Resistor, Chip, 1/16W, 5%	0402	Std	Std
1	R6	0	Resistor, Chip, 1/16W	0603	Std	Std
0	RT1	Open	Thermistor, NTC, 10kOhms	0603	NCP18W103J03RC	Murata
1	S1	688-SKRELG	Switch, SPST, PB Momentary,	0.140 X 0.173 inch	688-SKRELG	ALPS
0	TP1, TP2	Open	Test Point, 0.032 Hole		Std	Std
2	—		Shunt, 100-mil, Black	0.100	929950-00	3M
1	—		PCB, 2.23 In x 1.65 In x 0.031 In		HPA705	Any

## Evaluation Board/Kit Important Notice

Texas Instruments (TI) provides the enclosed product(s) under the following conditions:

This evaluation board/kit is intended for use for **ENGINEERING DEVELOPMENT, DEMONSTRATION, OR EVALUATION PURPOSES ONLY** and is not considered by TI to be a finished end-product fit for general consumer use. Persons handling the product(s) must have electronics training and observe good engineering practice standards. As such, the goods being provided are not intended to be complete in terms of required design-, marketing-, and/or manufacturing-related protective considerations, including product safety and environmental measures typically found in end products that incorporate such semiconductor components or circuit boards. This evaluation board/kit does not fall within the scope of the European Union directives regarding electromagnetic compatibility, restricted substances (RoHS), recycling (WEEE), FCC, CE or UL, and therefore may not meet the technical requirements of these directives or other related directives.

Should this evaluation board/kit not meet the specifications indicated in the User's Guide, the board/kit may be returned within 30 days from the date of delivery for a full refund. **THE FOREGOING WARRANTY IS THE EXCLUSIVE WARRANTY MADE BY SELLER TO BUYER AND IS IN LIEU OF ALL OTHER WARRANTIES, EXPRESSED, IMPLIED, OR STATUTORY, INCLUDING ANY WARRANTY OF MERCHANTABILITY OR FITNESS FOR ANY PARTICULAR PURPOSE.**

The user assumes all responsibility and liability for proper and safe handling of the goods. Further, the user indemnifies TI from all claims arising from the handling or use of the goods. Due to the open construction of the product, it is the user's responsibility to take any and all appropriate precautions with regard to electrostatic discharge.

**EXCEPT TO THE EXTENT OF THE INDEMNITY SET FORTH ABOVE, NEITHER PARTY SHALL BE LIABLE TO THE OTHER FOR ANY INDIRECT, SPECIAL, INCIDENTAL, OR CONSEQUENTIAL DAMAGES.**

TI currently deals with a variety of customers for products, and therefore our arrangement with the user **is not exclusive.**

TI assumes **no liability for applications assistance, customer product design, software performance, or infringement of patents or services described herein.**

Please read the User's Guide and, specifically, the Warnings and Restrictions notice in the User's Guide prior to handling the product. This notice contains important safety information about temperatures and voltages. For additional information on TI's environmental and/or safety programs, please contact the TI application engineer or visit [www.ti.com/esh](http://www.ti.com/esh).

No license is granted under any patent right or other intellectual property right of TI covering or relating to any machine, process, or combination in which such TI products or services might be or are used.

## FCC Warning

This evaluation board/kit is intended for use for **ENGINEERING DEVELOPMENT, DEMONSTRATION, OR EVALUATION PURPOSES ONLY** and is not considered by TI to be a finished end-product fit for general consumer use. It generates, uses, and can radiate radio frequency energy and has not been tested for compliance with the limits of computing devices pursuant to part 15 of FCC rules, which are designed to provide reasonable protection against radio frequency interference. Operation of this equipment in other environments may cause interference with radio communications, in which case the user at his own expense will be required to take whatever measures may be required to correct this interference.

## EVM Warnings and Restrictions

It is important to operate this EVM within the input voltage range of 2.5 V to 6.4 V and the output voltage range of 8 V to 16 V .

Exceeding the specified input range may cause unexpected operation and/or irreversible damage to the EVM. If there are questions concerning the input range, please contact a TI field representative prior to connecting the input power.

Applying loads outside of the specified output range may result in unintended operation and/or possible permanent damage to the EVM. Please consult the EVM User's Guide prior to connecting any load to the EVM output. If there is uncertainty as to the load specification, please contact a TI field representative.

During normal operation, some circuit components may have case temperatures greater than 50°C. The EVM is designed to operate properly with certain components above 50°C as long as the input and output ranges are maintained. These components include but are not limited to linear regulators, switching transistors, pass transistors, and current sense resistors. These types of devices can be identified using the EVM schematic located in the EVM User's Guide. When placing measurement probes near these devices during operation, please be aware that these devices may be very warm to the touch.

Mailing Address: Texas Instruments, Post Office Box 655303, Dallas, Texas 75265  
Copyright © 2011, Texas Instruments Incorporated

## IMPORTANT NOTICE

Texas Instruments Incorporated and its subsidiaries (TI) reserve the right to make corrections, modifications, enhancements, improvements, and other changes to its products and services at any time and to discontinue any product or service without notice. Customers should obtain the latest relevant information before placing orders and should verify that such information is current and complete. All products are sold subject to TI's terms and conditions of sale supplied at the time of order acknowledgment.

TI warrants performance of its hardware products to the specifications applicable at the time of sale in accordance with TI's standard warranty. Testing and other quality control techniques are used to the extent TI deems necessary to support this warranty. Except where mandated by government requirements, testing of all parameters of each product is not necessarily performed.

TI assumes no liability for applications assistance or customer product design. Customers are responsible for their products and applications using TI components. To minimize the risks associated with customer products and applications, customers should provide adequate design and operating safeguards.

TI does not warrant or represent that any license, either express or implied, is granted under any TI patent right, copyright, mask work right, or other TI intellectual property right relating to any combination, machine, or process in which TI products or services are used. Information published by TI regarding third-party products or services does not constitute a license from TI to use such products or services or a warranty or endorsement thereof. Use of such information may require a license from a third party under the patents or other intellectual property of the third party, or a license from TI under the patents or other intellectual property of TI.

Reproduction of TI information in TI data books or data sheets is permissible only if reproduction is without alteration and is accompanied by all associated warranties, conditions, limitations, and notices. Reproduction of this information with alteration is an unfair and deceptive business practice. TI is not responsible or liable for such altered documentation. Information of third parties may be subject to additional restrictions.

Resale of TI products or services with statements different from or beyond the parameters stated by TI for that product or service voids all express and any implied warranties for the associated TI product or service and is an unfair and deceptive business practice. TI is not responsible or liable for any such statements.

TI products are not authorized for use in safety-critical applications (such as life support) where a failure of the TI product would reasonably be expected to cause severe personal injury or death, unless officers of the parties have executed an agreement specifically governing such use. Buyers represent that they have all necessary expertise in the safety and regulatory ramifications of their applications, and acknowledge and agree that they are solely responsible for all legal, regulatory and safety-related requirements concerning their products and any use of TI products in such safety-critical applications, notwithstanding any applications-related information or support that may be provided by TI. Further, Buyers must fully indemnify TI and its representatives against any damages arising out of the use of TI products in such safety-critical applications.

TI products are neither designed nor intended for use in military/aerospace applications or environments unless the TI products are specifically designated by TI as military-grade or "enhanced plastic." Only products designated by TI as military-grade meet military specifications. Buyers acknowledge and agree that any such use of TI products which TI has not designated as military-grade is solely at the Buyer's risk, and that they are solely responsible for compliance with all legal and regulatory requirements in connection with such use.

TI products are neither designed nor intended for use in automotive applications or environments unless the specific TI products are designated by TI as compliant with ISO/TS 16949 requirements. Buyers acknowledge and agree that, if they use any non-designated products in automotive applications, TI will not be responsible for any failure to meet such requirements.

Following are URLs where you can obtain information on other Texas Instruments products and application solutions:

### Products

Audio	<a href="http://www.ti.com/audio">www.ti.com/audio</a>
Amplifiers	<a href="http://amplifier.ti.com">amplifier.ti.com</a>
Data Converters	<a href="http://dataconverter.ti.com">dataconverter.ti.com</a>
DLP® Products	<a href="http://www.dlp.com">www.dlp.com</a>
DSP	<a href="http://dsp.ti.com">dsp.ti.com</a>
Clocks and Timers	<a href="http://www.ti.com/clocks">www.ti.com/clocks</a>
Interface	<a href="http://interface.ti.com">interface.ti.com</a>
Logic	<a href="http://logic.ti.com">logic.ti.com</a>
Power Mgmt	<a href="http://power.ti.com">power.ti.com</a>
Microcontrollers	<a href="http://microcontroller.ti.com">microcontroller.ti.com</a>
RFID	<a href="http://www.ti-rfid.com">www.ti-rfid.com</a>
RF/IF and ZigBee® Solutions	<a href="http://www.ti.com/lprf">www.ti.com/lprf</a>

### Applications

Communications and Telecom	<a href="http://www.ti.com/communications">www.ti.com/communications</a>
Computers and Peripherals	<a href="http://www.ti.com/computers">www.ti.com/computers</a>
Consumer Electronics	<a href="http://www.ti.com/consumer-apps">www.ti.com/consumer-apps</a>
Energy and Lighting	<a href="http://www.ti.com/energy">www.ti.com/energy</a>
Industrial	<a href="http://www.ti.com/industrial">www.ti.com/industrial</a>
Medical	<a href="http://www.ti.com/medical">www.ti.com/medical</a>
Security	<a href="http://www.ti.com/security">www.ti.com/security</a>
Space, Avionics and Defense	<a href="http://www.ti.com/space-avionics-defense">www.ti.com/space-avionics-defense</a>
Transportation and Automotive	<a href="http://www.ti.com/automotive">www.ti.com/automotive</a>
Video and Imaging	<a href="http://www.ti.com/video">www.ti.com/video</a>
Wireless	<a href="http://www.ti.com/wireless-apps">www.ti.com/wireless-apps</a>

TI E2E Community Home Page

[e2e.ti.com](http://e2e.ti.com)

Mailing Address: Texas Instruments, Post Office Box 655303, Dallas, Texas 75265  
Copyright © 2011, Texas Instruments Incorporated