

MFA. Push-pull clamps

Steel



- 1
- 2
- 3
- 4
- 5
- 6
- 7
- 8
- 9
- 10
- 11
- 12
- 13
- 14
- 15
- 16
- 17
- 18

MATERIAL

C10 zinc-plated steel.

RIVETS

Zinc-plated steel.

PUSH LEVER

Zinc-plated steel.

REFERENCE BUSHING

Zinc-plated brass.

NUT

Zinc-plated steel.

HANDLE

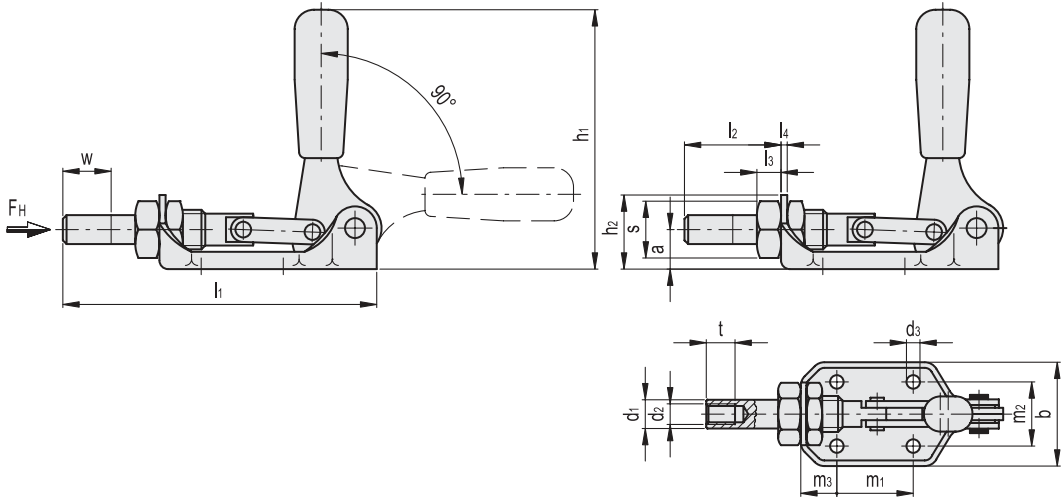
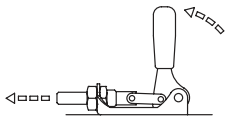
Polyurethane, red colour.

CLAMPING BOLTS

To be ordered separately.

FEATURES AND APPLICATIONS

All articulated joints are lubricated with special grease.
MFA. clamps ensure only perfect push clamping.



METRIC

| Code | Description | a | b | d1 | d2 | d3 | h1 | h2 | l1 | l2 | l3 | l4 | m1 | m2 | m3 | s | t | Stroke w | FH [N]* | Δ |
|----------|-------------|----|----|----|----|-----|-----|----|-----|----|----|----|----|----|----|----|----|----------|---------|----------|
| GG.AG120 | MFA.120-AS | 17 | 48 | 12 | M6 | 5.5 | 111 | 32 | 130 | 40 | 10 | 3 | 34 | 30 | 18 | 24 | 12 | 20 | 3600 | 350 |
| GG.AG300 | MFA.300-AS | 20 | 58 | 14 | M8 | 6.5 | 140 | 36 | 167 | 57 | 12 | 3 | 50 | 34 | 18 | 27 | 16 | 33 | 7200 | 560 |

* Holding force.

Toggle clamps

1626



Models all rights reserved in accordance with the law. Always mention the source when reproducing our drawings and photos.

