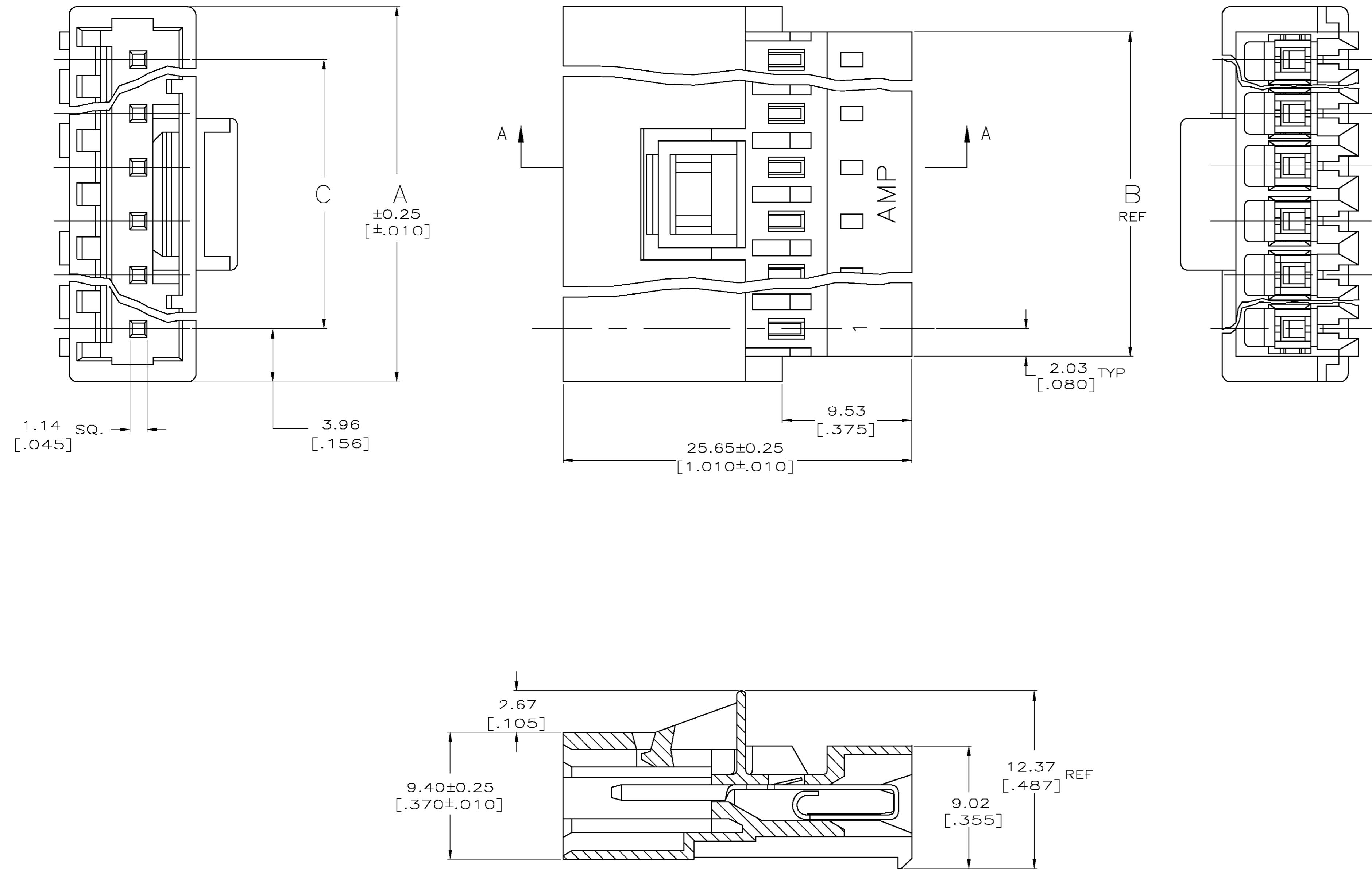


LOC	DIST	REVISIONS					
		P	LTR	DESCRIPTION	DATE	DWN	APVD
CM	00	B		REV PER ECN 0638-0392-03	21JUL03	SC	DB

1. MATERIAL: CONNECTOR - NYLON UL94-V2 (RED)  
 CONTACTS - 0.30[.012] THICK COPPER ALLOY  
 (BRIGHT TIN-LEAD 0.00203[.000080] MIN. THICK  
 FOR CONTACTS 641437-2 THRU 2-641437-4).  
 (BRIGHT TIN PLATE 0.00305[.000120] MIN. THICK  
 FOR CONTACTS 3-641437-2 THRU 5-641437-4).
2. CONTACTS ACCEPT #22 AWG SOLID, FUSED STRANDED OR  
 STRANDED (7 STRANDS) WIRE WITH 2.41 [.095] MAX  
 INSULATION DIA.
3. BOW, IN ANY DIRECTION, NOT TO EXCEED 0.15 [.006] PER IN.
4. HOUSING FEATURES: CLOSED END.
5. DIMENSIONS IN BRACKETS ARE IN INCHES.



SECTION A-A

	YES	91.14 [3.588]	95.20 [3.748]	99.06 [3.900]	24	5-641437-4
	YES	55.47 [2.184]	59.54 [2.344]	63.40 [2.496]	15	4-641437-5
	YES	43.59 [1.716]	47.65 [1.876]	51.51 [2.028]	12	4-641437-2
	YES	31.70 [1.248]	35.76 [1.408]	39.62 [1.560]	9	3-641437-9
	YES	19.81 [.780]	23.88 [.940]	27.74 [1.092]	6	3-641437-6
	YES	11.89 [.468]	15.95 [.628]	19.81 [.780]	4	3-641437-4
	YES	7.92 [.312]	11.99 [.472]	15.85 [.624]	3	3-641437-3
	YES	3.96 [.156]	8.03 [.316]	11.89 [.468]	2	3-641437-2
	NO	91.14 [3.588]	95.20 [3.748]	99.06 [3.900]	24	2-641437-4
	NO	55.47 [2.184]	59.54 [2.344]	63.40 [2.496]	15	1-641437-5
	NO	43.59 [1.716]	47.65 [1.876]	51.51 [2.028]	12	1-641437-2
	NO	31.70 [1.248]	35.76 [1.408]	39.62 [1.560]	9	641437-9
	NO	19.81 [.780]	23.88 [.940]	27.74 [1.092]	6	641437-6
	NO	11.89 [.468]	15.95 [.628]	19.81 [.780]	4	641437-4
	NO	7.92 [.312]	11.99 [.472]	15.85 [.624]	3	641437-3
	NO	3.96 [.156]	8.03 [.316]	11.89 [.468]	2	641437-2
LEADFREE		C	B	A	NO. OF CIRCUITS	PART NUMBER



THIS DRAWING IS A CONTROLLED DOCUMENT.

DW: S. CARPENTER 21JUL2003  
 DK: D. BOSSI 21JUL2003  
 AP: D. BOSSI 21JUL2003

TYCO Electronics Corporation  
 Harrisburg, PA 17105

MTA 156  
 POSTED CONNECTOR ASSEMBLY,  
 22 AWG

SIZE: A1 CAGE CODE: 00779 DRAWING NO: 641437  
 SCALE: 5:1 SHEET: 1 OF 1 REV: B

RESTRICTED TO