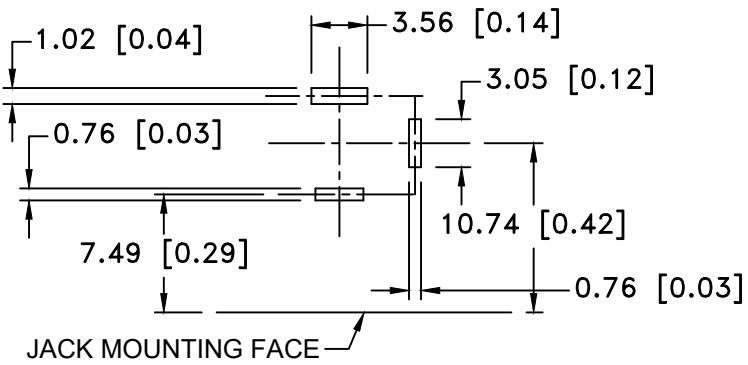
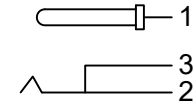
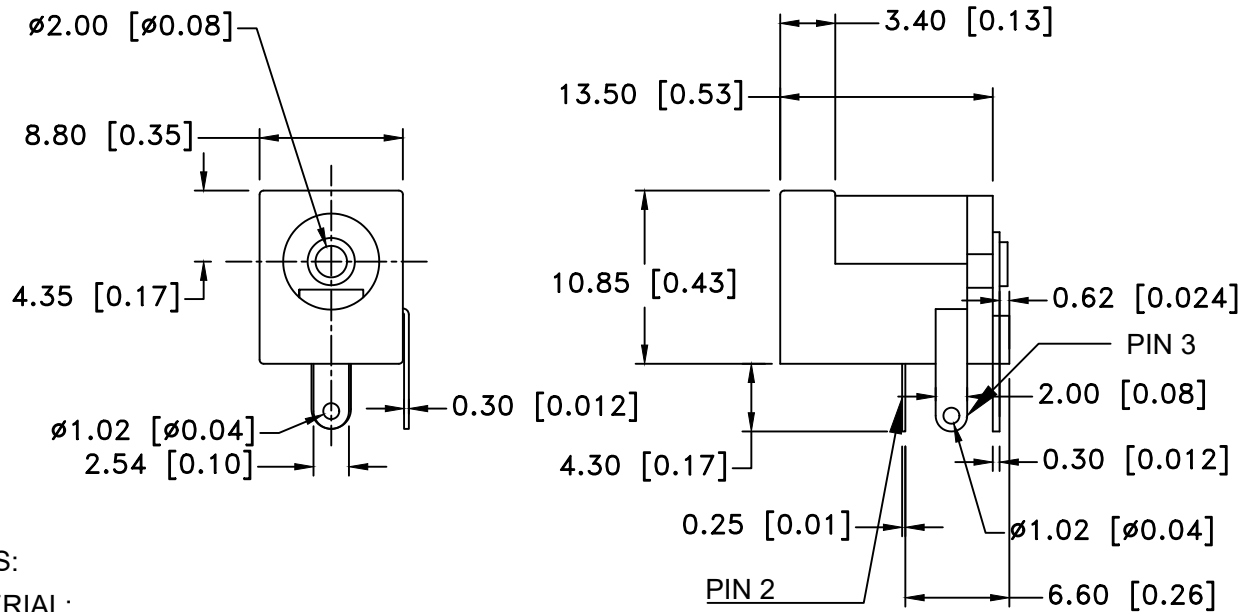


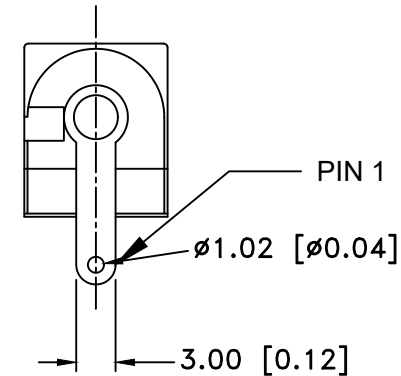
Date	SYM	REVISION RECORD	AUTH	DR.	CK.
07/14/16	G	UPDATED LEFT SIDE VIEW	T.B.	B.S.	
11/04/16	H	ADDED PIN NUMBER	T.B.	B.S.	
08/14/18	J	PIN MATERIAL WAS COPPER	T.B.	B.S.	



PCB LAYOUT



SCHEMATIC



NOTES:

MATERIAL:

- 1) PIN TERMINAL: 0.4T BRASS SILVER PLATED
- 2) SLEEVE SPRING: 0.2T PHOSPHOR BRONZE
- 3) BREAK TERMINAL: 0.3T BRASS
- 4) PIN ($\phi 2.0$): BRASS
- 5) HOUSING: PBT
- 6) COVER: PBT

ROHS 2 COMPLIANT

ELECTRICAL SPECS:

- 1. LIFE: 10,000 INSERTION/WITHDRAWAL CYCLE MINIMUM
- 2. CONTACT RESISTANCE: 50mU MAXIMUM
- 3. INSULATION RESISTANCE: 1000mU MINIMUM
- 4. DIELECTRIC WITHSTANDING VOLTAGE: 500AC MAXIMUM
- 5. MAXIMUM RATING: 5A, 12V DC
- 6. TEMPERATURE RATING: -15°C TO 90°C

Tolerance (Except as noted)	Memory Protection Devices, Inc 200 Broad Hollow Road, Farmingdale, New York 11735		
	decimal $\pm .5 (.020)$	Scale	Drawn By B.S. Approved By T.B.
Fractional $\pm .8 (.030)$	Title DC JACK - PCB MOUNTING 2.1 I.D. x 5.5 O.D.		
Angular $\pm 3^\circ$	Date 08/14/18	Drawing Number EJ508A	