

6

5

4

3

2

1

APPROVED: \_\_\_\_\_

DATE: \_\_\_\_\_ TITLE: \_\_\_\_\_

Rev	AWO #	Description	Date	Appr
-		RELEASED	8/16/21	

MMI-M1FSXXXS

SIZE 1

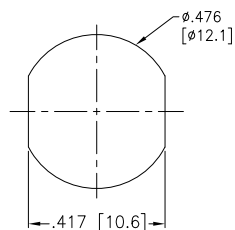
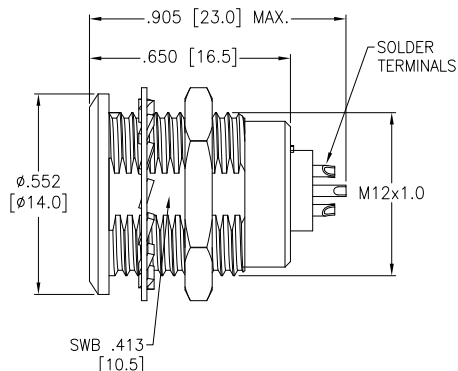
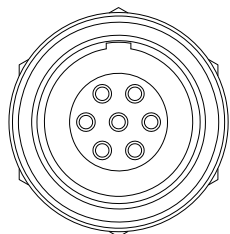
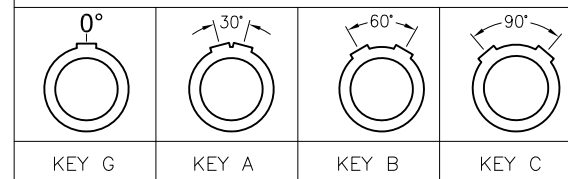
ALIGNMENT KEY

- G = 0°
- A = 30°
- B = 60°
- C = 90°

# OF POSITIONS

(02, 03, 04, 05, 06, 07, 08, 10, 14 & 16)

ALIGNMENT KEY OPTION



Panel Cut-Out  
(Front Panel Mounting)

Note: .295 [7.5] Max. Panel Thickness

SPECIFICATIONS:

Material:  
 Body: Brass, Natural Chrome Plated  
 Insulator: PPS, color Beige  
 Terminal: Brass, Gold Plated  
 Electrical:  
 Voltage Rating: See chart  
 Current Rating: See chart  
 Dielectric withstanding voltage: See chart  
 Electrical Life: 1,000 Cycles min.  
 Mechanical:  
 Endurance: 5,000 Cycles Min.  
 Temperature Rating:  
 Operating temperature: -55°C to +150°C  
 Environmental:  
 IP50 Protection (Mated Condition)  
 Lead free, RoHS compliant



	2 Pin	3 Pin	4 Pin	5 Pin	6 Pin	7 Pin	8 Pin	10 Pin	14 Pin	16 Pin
Configuration										
Diameter of Pin	ø1.3	ø1.3	ø0.9	ø0.9	ø0.7	ø0.7	ø0.7	ø0.5	ø0.5	ø0.5
Testing Voltage	1300V	1300V	1200V	1200V	1000V	1000V	1000V	800V	800V	800V
Working Voltage	300V	300V	250V	250V	200V	200V	200V	200V	200V	200V
Rated Current / Pin	9A	9A	8A	7A	5A	5A	5A	2A	2A	2A

UNLESS OTHERWISE SPECIFIED  
 ALL DIMENSIONS ARE INCHES [MM]  
 TOLERANCES: EXCEPT AS NOTED

INCHES	HOLES
.X ± .10	ø.X ± .10
.XX ± .020	ø.XX ± .015
.XXX ± .015	ø.XXX ± .010



909 Rahway Avenue,  
 Union, NJ 07083  
 Phone: 908-687-5000  
 Fax: 908-687-5710

APPROVALS		DATE
DRAWN	SS	8/16/21
CHECKED	SS	8/16/21
APPROVED		

TITLE  
 PUSH-PULL SOCKET, VERTICAL, SIZE 1, METAL BODY,  
 FRONT PANEL MOUNT, SOLDER TERMINAL, IP50

SIZE X	PART NO. MMI-M1FSXXXS	REV. -
REF: SXXXXX	SCALE: NTS	SHEET 1 OF 1

6

5

4

3

2

1