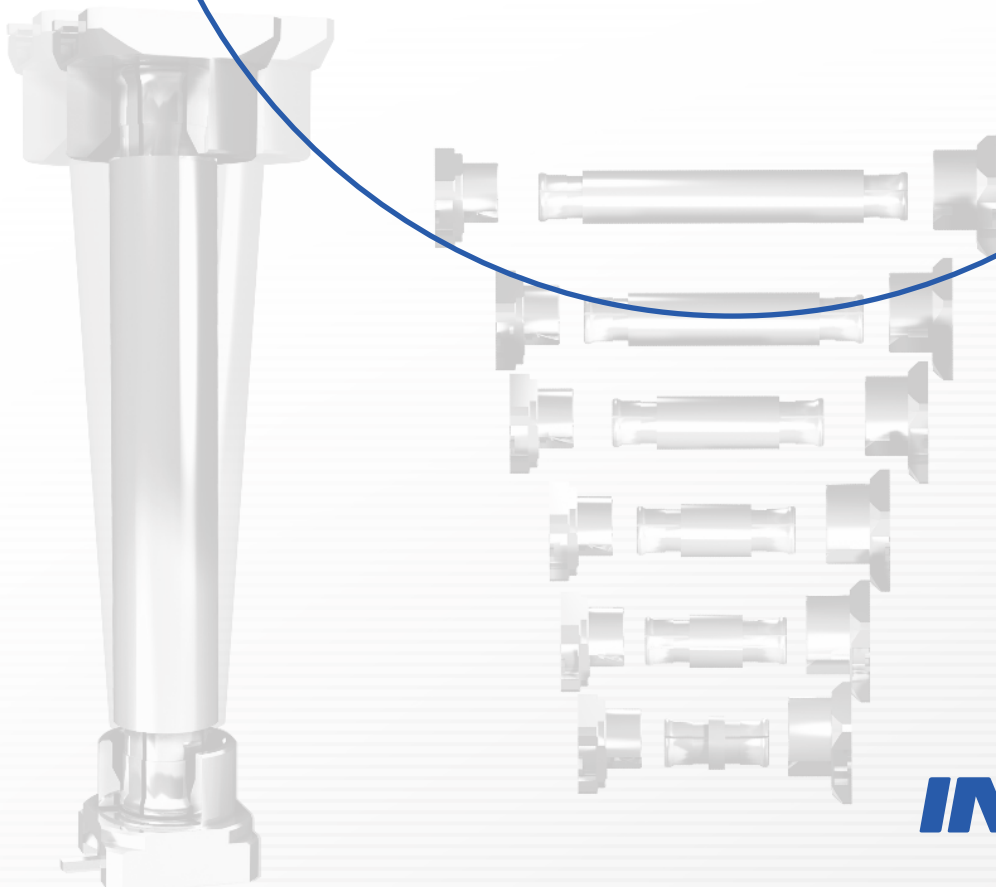




SMP  
connectors  
the easy connection



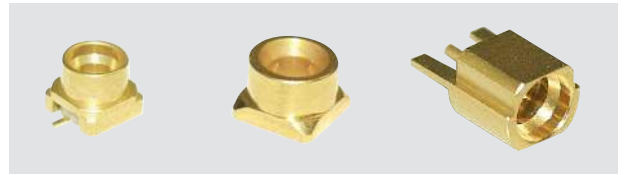
**IMS** CONNECTOR  
SYSTEMS

# Products overview

## PCB mount

SMD mount plug connectors

- Limited Detent and Smooth Bore
- Centre pin in SMD, BGA or throughhole configurations

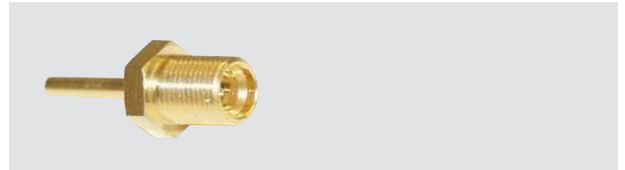


Surface mount technology plug connectors

- Limited Detent and Smooth Bore
- Centre pin in SMD, BGA or throughhole configurations



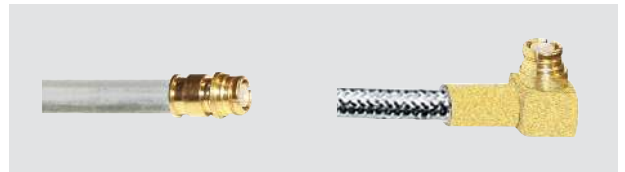
## Bulkhead mount



## Cable mount

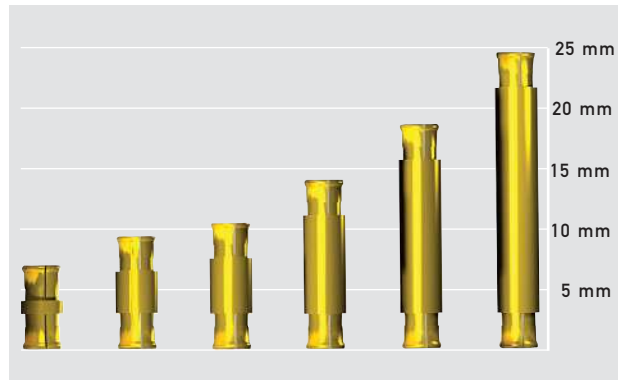
Straight and right angle jacks

- Semi-rigid and semi-flexible UT 47, UT 85

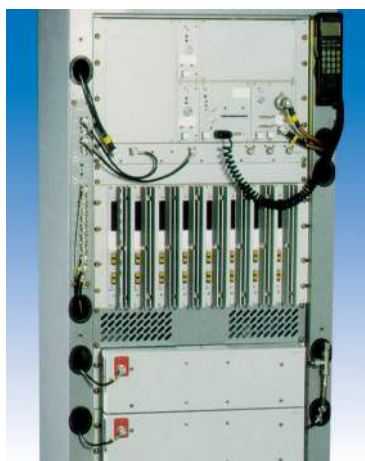


## Adapters

- Adapter length from 6.75 to 24.2 mm for PCB distance from 9.8 to 27.2 mm



# Applications



The features of the SMP connectors from IMS Connector Systems make them uniquely suited for establishing RF interconnects between closely spaced printed circuit boards (PCBs)

in cellular base stations as well as between units in other of today's advanced electronics subsystems, such as Telematics, Baseband Systems and Automotive Systems.

# SMP from IMS Connector Systems

The SMP connectors product line from IMS Connector Systems includes a full range of PCB plugs for SMD technology as well as for traditional through-hole mounting in Smooth Bore and Limited Detent versions. The connectors have been optimised for VSWR performance in a microstrip environment and feature excellent matching characteristics. A wide range of adapters, allowing PCB distances from 9.8 to 27.2 mm are available as well as cable plugs for semi-rigid, semi-flexible and flexible cables.

## Features

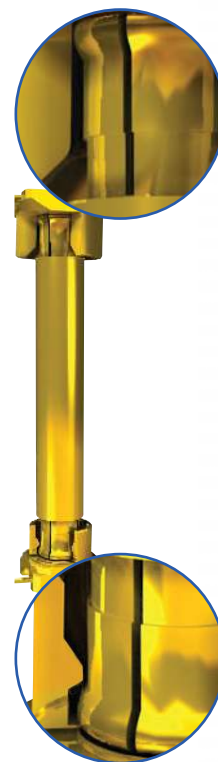
- Quality blind mate microwave connectors
- Absorb tolerances between mating connectors
- Replace complex float-mount coaxial interconnections without sacrificing performance
- Cost effective means of providing board-to-board connections with float-mount like functionality
- Ideal for base station electronics connections

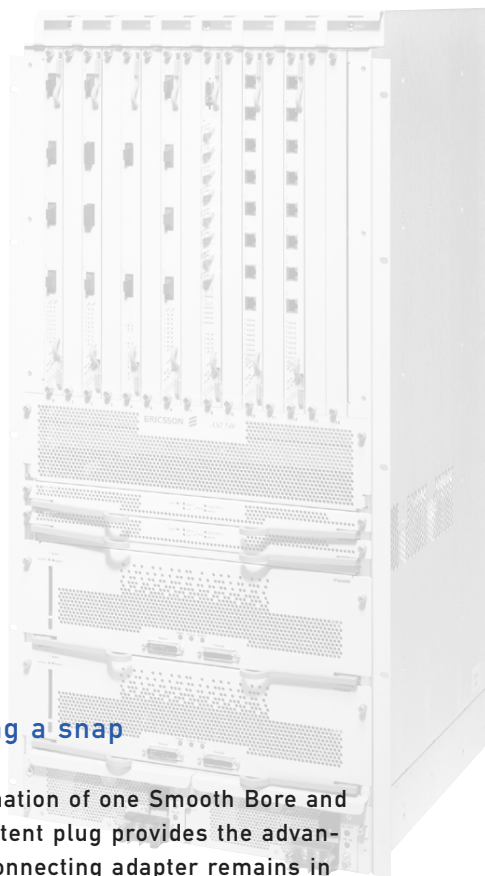
### Smooth Bore

which provides slide-on mating with the jack

### Limited Detent

which provides snap-fit mating with the jack

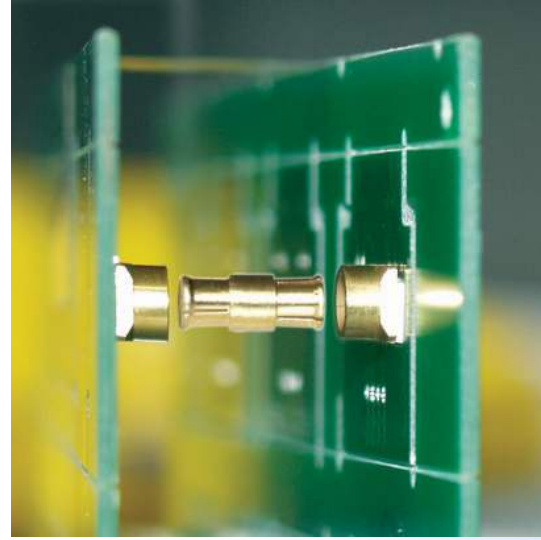




### Makes testing a snap

Using a combination of one Smooth Bore and one Limited Detent plug provides the advantage that the connecting adapter remains in a predictable position if the connectors have to be de-mated for test or service purposes.

Smooth Bore and Limited Detent are normally the connectors of choice. They have similar RF performance in mated position.



### Tolerance absorption

All connections between two units are made through male connectors (plugs) fixed on the units, connected by a female-female (jack-jack) adapter - the so called bullet. This ensures the unique properties of tolerance absorption.

A jack mated to a Smooth Bore plug is able to absorb a deviation in unit distance along the axis of the connectors of up to 0.3 mm.



### Misalignment

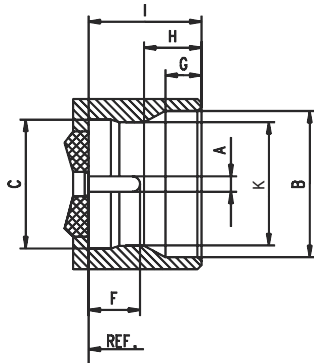
Due to the design of the interface, a mated pair of jack-plug SMP connectors will yield satisfactory performance even if the axes of the two connectors are misaligned as much as 4°.

In order to fully explore the advantages of relaxed alignment when inserting an adapter slightly off-centre into the plug, a special version of the Smooth Bore plug is used with a flared entry which provides a wide guide-in range. In some markets this feature is known as "Catcher's mitt".

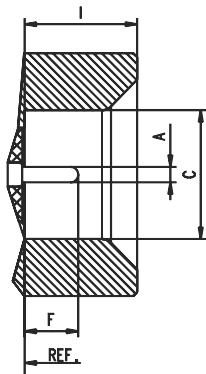
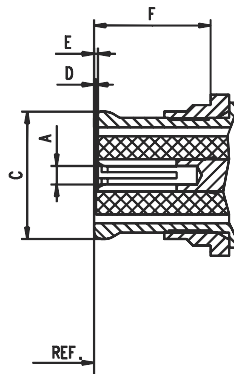


# Technical specifications

## Plug (Male)

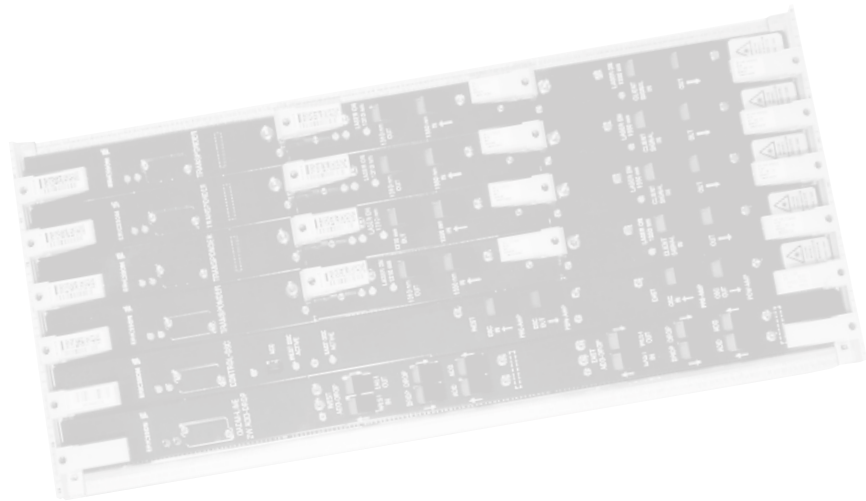


## Jack (Female)



	Male (mm)		Female (mm)	
	min.	max.	min.	max.
A	0.35	0.41	1)	
B	3.53	3.69		
C	3.13	3.23		3.43
D			-0.07	0.12
E			0.00	0.20
F	1.14	1.4	3.35	
G	0.84	0.94		
H	1.39	1.45		
I	2.74	2.84		
K	2.90	3.00		

1) resilient, dim. to meet electrical and mechanical requirements



## Electrical characteristics

Impedance	50 Ohm
Working frequency	DC - 12 GHz
Depending on connector type	
VSWR-value	
Straight connector semi-rigid cable	1.03 + 0.02 f (GHz), typ.
Angle connector semi-rigid cable	1.04 + 0.03 f (GHz), typ.
Proof voltage	500 V RMS / 50 Hz
Depending on cable type	
Working voltage	335 V RMS / 50 Hz
Depending on cable type	
RF leakage	
Insulation resistance	≥ 5 GOhm
Contact resistance	
Centre contact	≤ 6 mOhm
Outer contact	<_ 2 mOhm
Contact current max.	1.2 A DC
Admissible power	Application specific

## Environmental

Working temperature range	-55°C .. 155°C
Relative humidity	MIL-STD-202 Meth. 106
Shock	MIL-STD-202 Meth. 213
Vibration	MIL-STD-202 Meth. 204
Temperature cycling	MIL-STD-202 Meth. 107

## Mechanical characteristics

Engagement force	
Limited Detent	45 N max
Smooth Bore	9 N max
Separation force	
Limited Detent	9 N min
Smooth Bore	2.2 N min
Mating cycles	
Limited Detent	> 500
Smooth Bore	> 1000
Misalignment,	
Smooth Bore - Limited Detent pair	
Angular misalignment	< 4°
Axial misalignment	< 0.25 mm

## Materials

Housing	Brass
Centre contacts	Brass
Spring loaded contacts	BeCu
Insulators	PTFE, PEEK, LCP

## Plating

Housing	Au
Centre contacts	Au
Spring loaded contacts	Au



HEADQUARTERS, GERMANY  
IMS Connector Systems GmbH  
Obere Hauptstraße 30  
D-79843 Löffingen

Phone (+49) 7654 901-0  
Fax (+49) 7654 901-199  
sales@imscs.com

HUNGARY  
IMS Connector Systems Kft  
Ipar körút 27  
H-9400 Sopron

Phone (+36) 99 513-513  
Fax (+36) 99 513-514  
sales@imscs.com

CHINA  
IMS Connector Systems Ltd  
No 35, Huo Ju Road  
SND Science & Technology Park  
VCR-Suzhou 215011

Phone (+86) 512 6808-1816  
Fax (+86) 512 6825-2388  
sales@imscscn.com

## **IMS** CONNECTOR SYSTEMS

HEADQUARTERS, GERMANY  
IMS Connector Systems GmbH  
Obere Hauptstraße 30  
D-79843 Löffingen

Phone (+49) 7654 901-0  
Fax (+49) 7654 901-199

sales@imscs.com  
www.imscs.com

More product information:  
[www.imscs.com](http://www.imscs.com)

