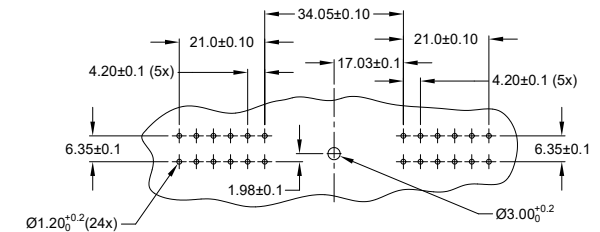
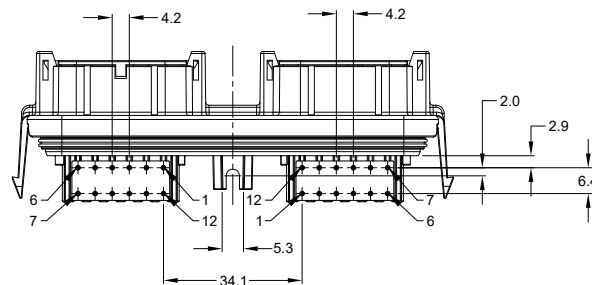
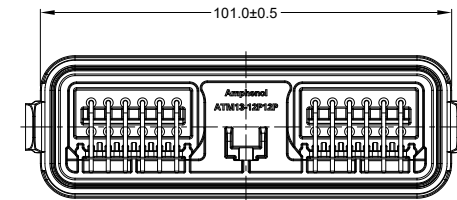
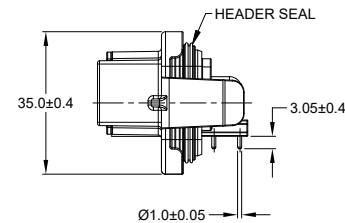
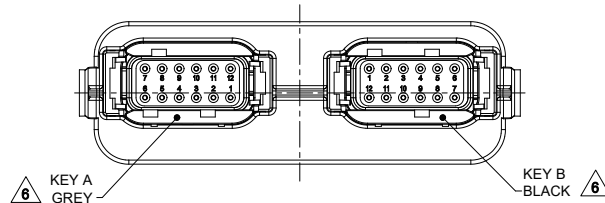
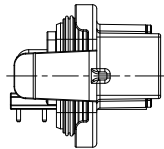
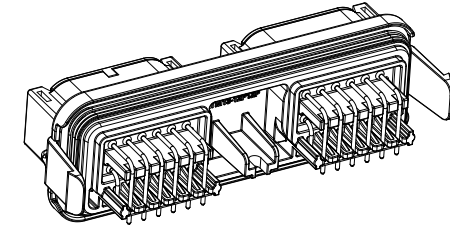
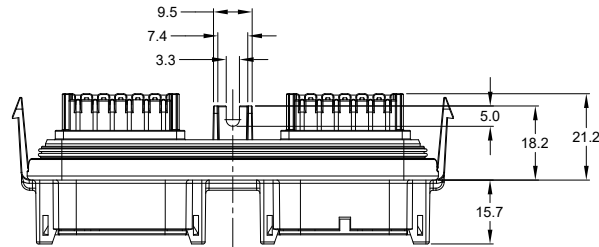


REVISIONS					
REV	ECO	DESCRIPTION	DATE	BY	APPR
A1	-	RELEASE NEW DRAWING	06NOV18	SULLEN	TOMMY
A2	-	UPDATED DRAWING	18FEB19	SULLEN	TOMMY
A3	-	ADD SPACE LIMIT DIMENSION	15JAN20	SULLEN	TOMMY



NOTES: UNLESS OTHERWISE SPECIFIED

- MATERIAL:
HOUSING: THERMOPLASTIC, BLACK
SEAL: SILICONE RUBBER
CONTACT: COPPER ALLOY
- MODIFICATIONS: RA PCB MOUNT
- SPECIFICATIONS:
3.1 CURRENT RATING: 7.5 AMPS
3.2 OPERATING TEMPERATURE: -55°C TO +125°C
3.3 DIELECTRIC WITHSTANDING VOLTAGE: LESS THAN 2 MILLIAMPS CURRENT LEAKAGE @ 1500 VOLTS AC
3.4 INSULATION RESISTANCE: 1000 MEGOHMS MIN @ 25°C
3.5 MOISTURE RESISTANCE: IP69K (MATED CONDITION)
3.6 MATING CYCLE DURABILITY: 100 CYCLES
3.7 RoHS COMPLIANT
- MATING PART: ATM06-12SX-*
(X = A,B,C,D KEYS ; * = ALL MODIFICATIONS)
- THIS RECEPTACLE IS USED WITH AIPXE-325X4A-XXXX AND AIPXE-325X4B-XXXX ENCLOSURE (XXXX= ALL MODIFICATIONS)

6. SEE SHEET 2 AND 3 FOR OTHER KEY ARRANGEMENTS AND COLORS

7. MAXIMUM COMPONENT HEIGHT DEPENDS ON LOCATION DUE TO PART DRAFT AND RIBS. (SEE SHEET 4)

8. ALL DIMENSIONS ARE FOR REFERENCE USE ONLY

SEE SHEET 2 & 3		DESCRIPTION		ITEM
QUANTITY	PART NUMBER	MATERIALS LIST		
UNLESS OTHERWISE SPECIFIED 1) All dimensions are in metric (mm). 2) Tolerances are as follows: 1 PL DEC ±0.30 2 PL DEC ±0.15 3 PL DEC ±0.08 3) Note reference =		SIGNATURES	DATE	<h1>Amphenol</h1> <p>Sine Systems - www.amphenol-sine.com 44724 Morley Drive Clinton Township, MI 48036</p> <p>ARMOR IPX RECEPTACLE ATM HEADER, 2 x 12 POSITIONS, SIZE 20 CONTACT</p>
DRAWN: SULLEN,ZHANG		15JAN20		
CHECKED: ORION,LI		16JAN20		
ENGINEER:				
APPROVAL: TOMMY,XIE		17JAN20		
MATERIAL SPECIFICATIONS:		CUSTOMER:		
PROCESS SPECIFICATIONS:		THIS DRAWING IS SUPPLIED FOR INFORMATION ONLY. DESIGN FEATURES, SPECIFICATIONS AND PERFORMANCE DATA SHOWN HEREON ARE THE PROPERTY OF THE AMPHENOL CORPORATION. NO RIGHTS OF REPRODUCTION ARE IMPLIED. ALL DIMENSIONS ARE SUBJECT TO NORMAL MANUFACTURING VARIATIONS.		
NEXT ASSY:		SIZE	TYPE	DWG NO.
		B	C-	ATM13-12PX-12PX-BMXX
		SCALE:	NONE	REVISION
				A3
			SHEET	1 OF 4

TITLE: ARMOR IPX RECEPTACLE ATM HDR, 2x12 POSITIONS, SIZE 20 CONTACT

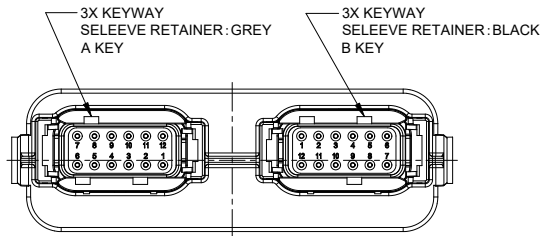
DWG NO: ATM13-12PX-12PX-BMXX

REV: A3

SH: 1

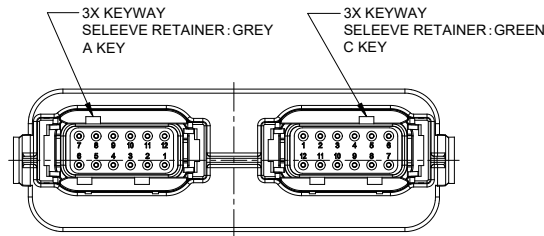
OF: 4

REVISIONS					
REV	ECO	DESCRIPTION	DATE	BY	APPR
A1	-	RELEASE NEW DRAWING	06NOV18	SULLEN	TOMMY
A2	-	UPDATED DRAWING	18FEB19	SULLEN	TOMMY
A3	-	ADD SPACE LIMIT DIMENSION	15JAN20	SULLEN	TOMMY



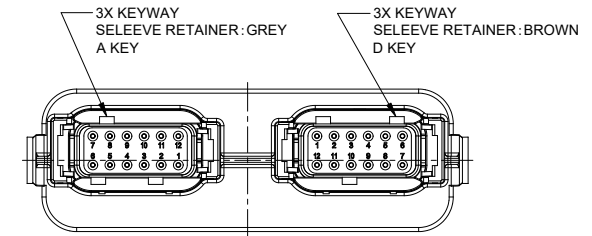
KEY AB

CONTACT PLATING	PART NUMBER	REFERENCE
GOLD	ATM13-12PA-12PB-BM01	DTM13-12PA-12PB-GR01
TIN	ATM13-12PA-12PB-BM03	DTM13-12PA-12PB-R008



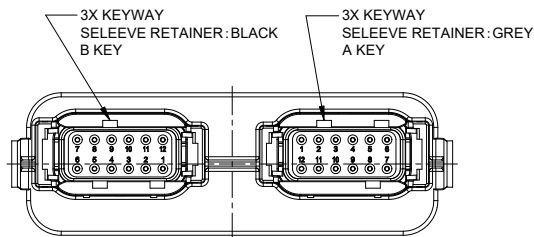
KEY AC

CONTACT PLATING	PART NUMBER	REFERENCE
GOLD	ATM13-12PA-12PC-BM01	DTM13-12PA-12PC-GR01
TIN	ATM13-12PA-12PC-BM03	DTM13-12PA-12PC-R008



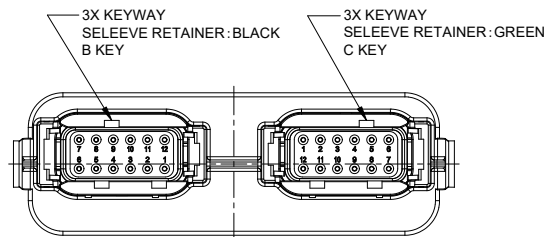
KEY AD

CONTACT PLATING	PART NUMBER	REFERENCE
GOLD	ATM13-12PA-12PD-BM01	DTM13-12PA-12PD-GR01
TIN	ATM13-12PA-12PD-BM03	DTM13-12PA-12PD-R008



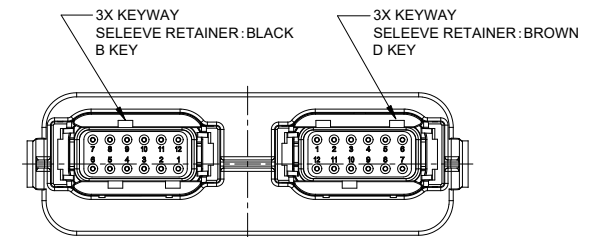
KEY BA

CONTACT PLATING	PART NUMBER	REFERENCE
GOLD	ATM13-12PB-12PA-BM01	DTM13-12PB-12PA-GR01
TIN	ATM13-12PB-12PA-BM03	DTM13-12PB-12PA-R008



KEY BC

CONTACT PLATING	PART NUMBER	REFERENCE
GOLD	ATM13-12PB-12PC-BM01	DTM13-12PB-12PC-GR01
TIN	ATM13-12PB-12PC-BM03	DTM13-12PB-12PC-R008



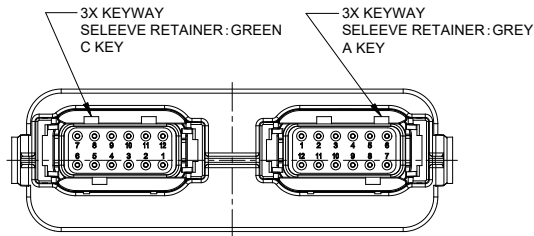
KEY BD

CONTACT PLATING	PART NUMBER	REFERENCE
GOLD	ATM13-12PB-12PD-BM01	DTM13-12PB-12PD-GR01
TIN	ATM13-12PB-12PD-BM03	DTM13-12PB-12PD-R008

ATM13-12PX-12PX-BMXX		DESCRIPTION		ITEM
QUANTITY	PART NUMBER	MATERIALS LIST		
<p>UNLESS OTHERWISE SPECIFIED</p> <p>1) All dimensions are in metric(mm).</p> <p>2) Tolerances are as follows:</p> <p>1 PL DEC ±0.30 Fractions ±1/64</p> <p>2 PL DEC ±0.15 Angle ±1°</p> <p>3 PL DEC ±0.08</p> <p>3) Note reference = </p>				
SIGNATURES		DATE		
DRAWN: SULLEN,ZHANG		15JAN20		
CHECKED: ORION,LI		16JAN20		
ENGINEER:				
APPROVAL: TOMMY,XIE		17JAN20		
CUSTOMER:				
MATERIAL SPECIFICATIONS:		THIS DRAWING IS SUPPLIED FOR INFORMATION ONLY. DESIGN FEATURES, SPECIFICATIONS AND PERFORMANCE DATA SHOWN HEREON ARE THE PROPERTY OF THE AMPHENOL CORPORATION. NO RIGHTS OF REPRODUCTION ARE IMPLIED. ALL DIMENSIONS ARE SUBJECT TO NORMAL MANUFACTURING VARIATIONS.		
PROCESS SPECIFICATIONS:				
NEXT ASSY:				
		<p>Amphenol</p> <p>Sine Systems - www.amphenol-sine.com 44724 Morley Drive Clinton Township, MI 48036</p>		<p>ARMOR IPX RECEPTACLE ATM HEADER, 2 x 12 POSITIONS, SIZE 20 CONTACT</p>
		<p>SIZE: B C-</p> <p>SCALE: NONE</p>	<p>TYPE: ATM13-12PX-12PX-BMXX</p>	<p>DWG NO: A3</p> <p>REVISION</p>
		SHEET 2 OF 4		

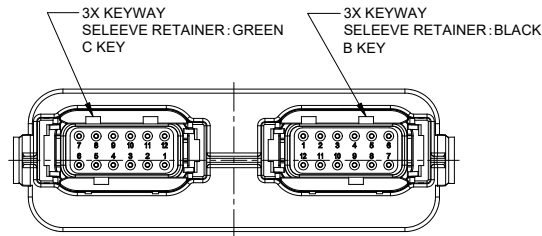
TITLE: ARMOR IPX RECEPTACLE ATM HDR, 2x 12 POSITIONS, SIZE 20 CONTACT
DWG NO: ATM13-12PX-12PX-BMXX
REV: A3
SH: 2
OF: 4

REVISIONS					
REV	ECO	DESCRIPTION	DATE	BY	APPR
A1	-	RELEASE NEW DRAWING	06NOV18	SULLEN	TOMMY
A2	-	UPDATED DRAWING	18FEB19	SULLEN	TOMMY
A3	-	ADD SPACE LIMIT DIMENSION	15JAN20	SULLEN	TOMMY



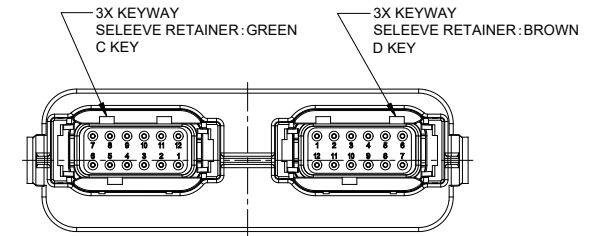
KEY CA

CONTACT PLATING	PART NUMBER	REFERENCE
GOLD	ATM13-12PC-12PA-BM01	DTM13-12PC-12PA-GR01
TIN	ATM13-12PC-12PA-BM03	DTM13-12PC-12PA-R008



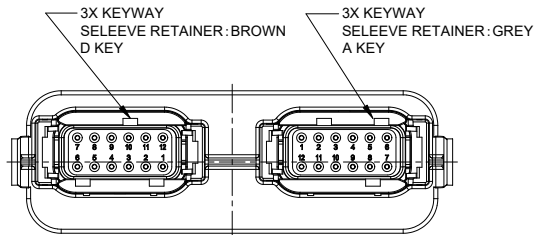
KEY CB

CONTACT PLATING	PART NUMBER	REFERENCE
GOLD	ATM13-12PC-12PB-BM01	DTM13-12PC-12PB-GR01
TIN	ATM13-12PC-12PB-BM03	DTM13-12PC-12PB-R008



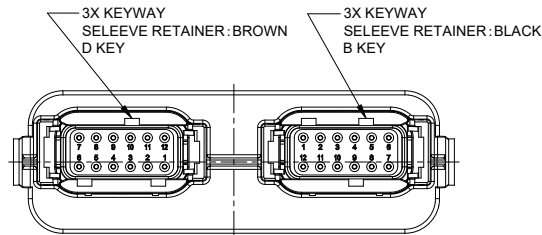
KEY CD

CONTACT PLATING	PART NUMBER	REFERENCE
GOLD	ATM13-12PC-12PD-BM01	DTM13-12PC-12PD-GR01
TIN	ATM13-12PC-12PD-BM03	DTM13-12PC-12PD-R008



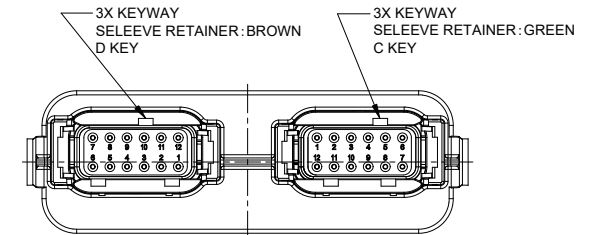
KEY DA

CONTACT PLATING	PART NUMBER	REFERENCE
GOLD	ATM13-12PD-12PA-BM01	DTM13-12PD-12PA-GR01
TIN	ATM13-12PD-12PA-BM03	DTM13-12PD-12PA-R008



KEY DB

CONTACT PLATING	PART NUMBER	REFERENCE
GOLD	ATM13-12PD-12PB-BM01	DTM13-12PD-12PB-GR01
TIN	ATM13-12PD-12PB-BM03	DTM13-12PD-12PB-R008



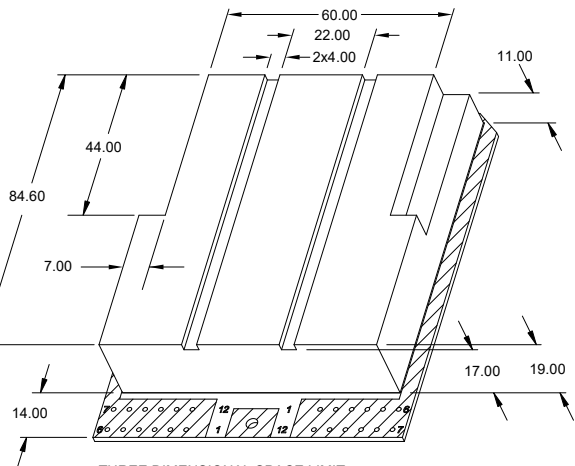
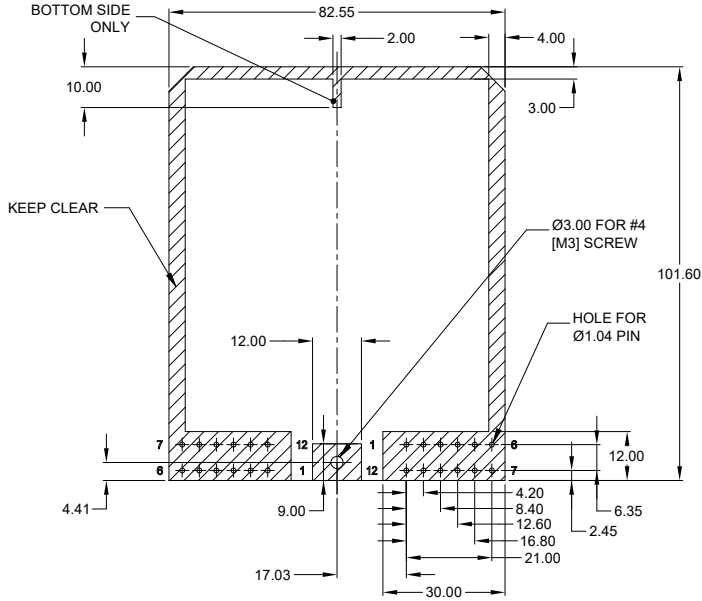
KEY DC

CONTACT PLATING	PART NUMBER	REFERENCE
GOLD	ATM13-12PD-12PC-BM01	DTM13-12PD-12PC-GR01
TIN	ATM13-12PD-12PC-BM03	DTM13-12PD-12PC-R008

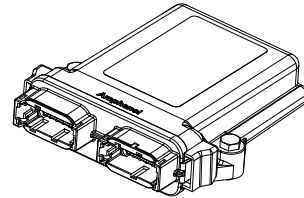
ATM13-12PX-12PX-BMXX		DESCRIPTION		ITEM
PART NUMBER		DESCRIPTION		
QUANTITY	MATERIALS LIST			
UNLESS OTHERWISE SPECIFIED		SIGNATURES		DATE
1) All dimensions are in metric(mm).		DRAWN: SULLEN,ZHANG		15JAN20
2) Tolerances are as follows:		CHECKED: ORIONLI		16JAN20
1 PL DEC ±0.30		ENGINEER:		
2 PL DEC ±0.15		APPROVAL: TOMMY,XIE		17JAN20
3 PL DEC ±0.08		CUSTOMER:		
3) Note reference =		MATERIAL SPECIFICATIONS:		
PROCESS SPECIFICATIONS:		THIS DRAWING IS SUPPLIED FOR INFORMATION ONLY. DESIGN FEATURES, SPECIFICATIONS AND PERFORMANCE DATA SHOWN HEREON ARE THE PROPERTY OF THE AMPHENOL CORPORATION. NO RIGHTS OF REPRODUCTION ARE IMPLIED. ALL DIMENSIONS ARE SUBJECT TO NORMAL MANUFACTURING VARIATIONS.		
NEXT ASSY:	SCALE: NONE		SIZE: B C-	REVISION: A3
		SINE SYSTEMS - www.amphenol-sine.com 44724 Morley Drive Clinton Township, MI 48036		
		ARMOR IPX RECEPTACLE ATM HEADER, 2 x 12 POSITIONS, SIZE 20 CONTACT		
		SHEET 3 OF 4		

TITLE: ARMOR IPX RECEPTACLE ATM HDR, 2x 12 POSITIONS, SIZE 20 CONTACT
 DWG NO.: ATM13-12PX-12PX-BMXX
 REV: A3
 SH: 3
 OF: 4

CIRCUIT BOARD HOLE LOCATIONS
AND KEEP CLEAR AREAS FOR
ATM13-12PX-12PX-BM01
ATM13-12PX-12PX-BM03
ALL DIMENSIONS REFERENCE
TOP VIEW

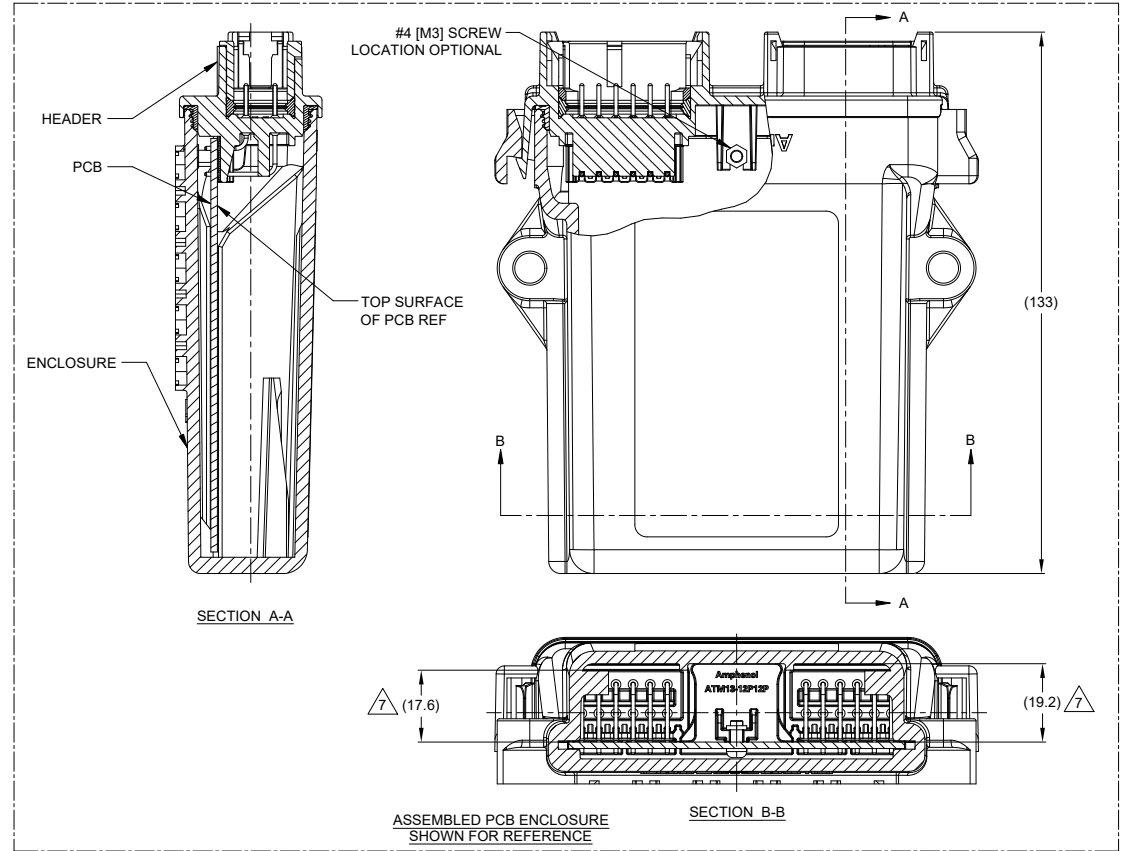


THREE DIMENSIONAL SPACE LIMIT
APPROXIMATE INTERNAL SPACE
FOR COMPONENT SPACE LAYOUT
MAX. COMPONENT HEIGHT UNDER BOARD 2.00 mm.



3D VIEW
AIPXE-325X4A-XXXX AND
AIPXE-325X4B-XXXX ENCLOSURE AND
MOUNTING HARDWARE SHOWN FOR REFERENCE

REVISIONS					
REV	ECO	DESCRIPTION	DATE	BY	APPR
A1	-	RELEASE NEW DRAWING	06NOV18	SULLEN	TOMMY
A2	-	UPDATE DRAWING	18FEB19	SULLEN	TOMMY
A3	-	ADD SPACE LIMIT DIMENSION	15JAN20	SULLEN	TOMMY



SEE SHEET 2 & 3		DESCRIPTION		ITEM
QUANTITY	PART NUMBER	MATERIALS LIST		
UNLESS OTHERWISE SPECIFIED				
1) All dimensions are in metric (mm).				
2) Tolerances are as follows:				
1 PL DEC ±0.30 Fractions ±1/64				
2 PL DEC ±0.15 Angles ±1°				
3) Note reference = Δ				
MATERIAL SPECIFICATIONS:		DRAWN: SULENZHANG	DATE: 15JAN20	<p>Amphenol</p> <p>Sine Systems - www.amphenol-sine.com 44724 Morley Drive Clinton Township, MI 48036</p>
PROCESS SPECIFICATIONS:		CHECKED: ORIONLI	DATE: 16JAN20	
NEXT ASSY:		ENGINEER:	DATE: 17JAN20	
		APPROVAL: TOMMY.XIE	DATE: 17JAN20	
		CUSTOMER:		<p>ARMOR IPX RECEPTACLE ATM HEADER, 2 x 12 POSITIONS, SIZE 20 CONTACT</p>
		THIS DRAWING IS SUPPLIED FOR INFORMATION ONLY. DESIGN FEATURES, SPECIFICATIONS AND PERFORMANCE DATA SHOWN HEREON ARE THE PROPERTY OF THE AMPHENOL CORPORATION. NO RIGHTS OF REPRODUCTION ARE IMPLIED. ALL DIMENSIONS ARE SUBJECT TO NORMAL MANUFACTURING VARIATIONS.		<p>SCALE: NONE</p>
		SIZE: B C-	TYPE: ATM13-12PX-12PX-BMXX	REVISION: A3
		SHEET 4 OF 4		

TITLE: ARMOR IPX RECEPTACLE ATM HDR, 2x12 POSITIONS, SIZE 20 CONTACT
DWG NO.: ATM13-12PX-12PX-BMXX
REV: A3
SH: 4
OF: 4