

**MATERIAL**

Glass-fibre reinforced polyamide based (PA) technopolymer, RAL 5005 blue colour, matte finish.

Produced from FDA compliant raw material (FDA CFR.21 and EU 10/2011).

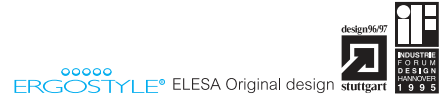
**STANDARD EXECUTION**

AlSI 303 stainless steel boss, threaded blind hole.

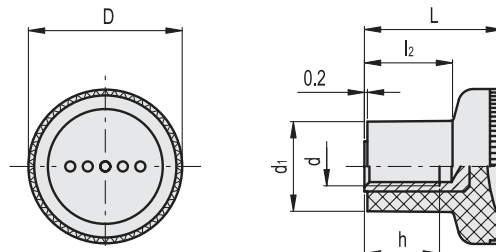
**FEATURES AND APPLICATIONS**

The RAL 5005 blue colour is easily visible in case of accidental food contamination.

Particularly suitable for applications in the food and pharmaceutical industries.



Conversion Table	
1 mm = 0,039 inch	
D	
mm	inch
21	0.83
31	1.22



Code	Description	D	L	d6H	d1	h	l2	⚖
194416	EKK.21-SST M5-VD	21	18	M5	12.5	10	10.5	7
194436	EKK.31-SST M8-VD	31	27	M8	18.5	15	17	20



Fixed & Revolving handles