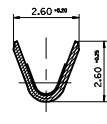
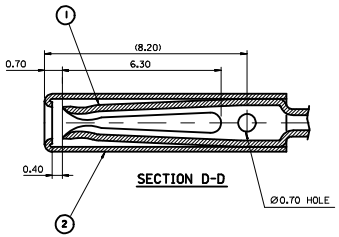


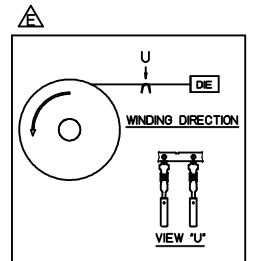
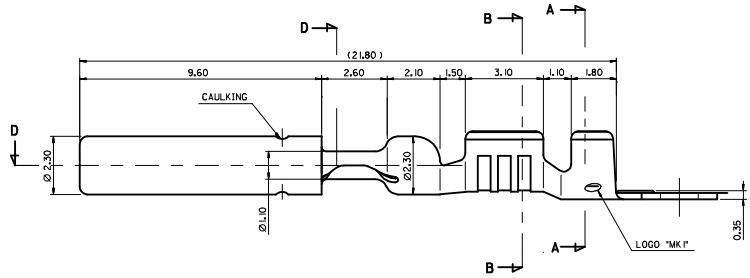
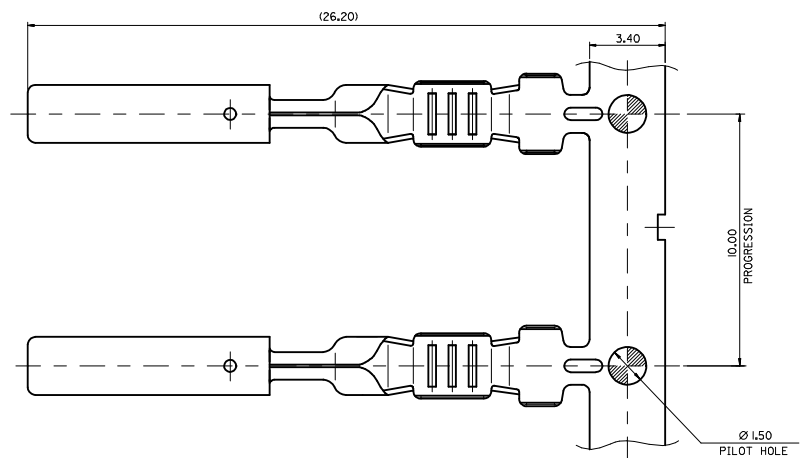
SECTION A-A



SECTION B-B



SECTION D-D



- NOTE**
1. RECOMMENDED LENGTH OF WIRE STRIP : 4.0~4.6
 2. FINISH : CIRCULOCK F/TML BODY(TIN PLATING), SLEEVE(TIN PLATING)
 3. WIRE RANGE (mm2) : AVS(AVSS) 0.3~0.85
 4. MATERIAL

NO.	ENG. NO.	PART NAME	MATERIAL
1	35402-8002	CIRCULOCK F/TML BODY	COPPER ALLOY THICKNESS 0.25
2	35401-9102	SLEEVE	BRASS (THICKNESS : 0.25)

REVISED EC NO: KTR2015-0113 DRWN: JKSE001 2015/06/09 CHKD: APPR: JYCHO1 2015/07/22	QUALITY SYMBOLS	GENERAL TOLERANCES (UNLESS SPECIFIED)	DIMENSION STYLE	SCALE	DESIGN UNITS	THIRD ANGLE PROJECTION															
	$\nabla=0$ $\nabla C=0$	<table border="1"> <thead> <tr> <th></th> <th>mm</th> <th>INCH</th> </tr> </thead> <tbody> <tr> <td>4 PLACES</td> <td>± ---</td> <td>± ---</td> </tr> <tr> <td>3 PLACES</td> <td>± ---</td> <td>± ---</td> </tr> <tr> <td>2 PLACES</td> <td>± ---</td> <td>± ---</td> </tr> <tr> <td>1 PLACE</td> <td>± 0.15</td> <td>± ---</td> </tr> </tbody> </table>		mm	INCH	4 PLACES	± ---	± ---	3 PLACES	± ---	± ---	2 PLACES	± ---	± ---	1 PLACE	± 0.15	± ---	MM ONLY	10:1	METRIC	
		mm	INCH																		
	4 PLACES	± ---	± ---																		
3 PLACES	± ---	± ---																			
2 PLACES	± ---	± ---																			
1 PLACE	± 0.15	± ---																			
DRAFT WHERE APPLICABLE MUST REMAIN WITHIN DIMENSIONS	DRAWN BY: JKSE001 CHECKED BY: APPROVED BY: DATE: 2015/06/09	TITLE	1.0 FEMALE TERMINAL																		
SIZE: A3	SEE TABLE	MATERIAL NO.	DOCUMENT NO.	MOLEX INCORPORATED																	
		THIS DRAWING CONTAINS INFORMATION THAT IS PROPRIETARY TO MOLEX INCORPORATED AND SHOULD NOT BE USED WITHOUT WRITTEN PERMISSION		SD-35403-1002																	
				SHEET NO. 1 OF 1																	