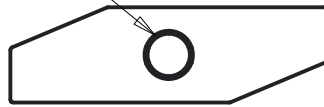


TC-32485-000

SHT 1.1

EARPHONE SIDE

$\varnothing 0,60 \pm 0,05$



MICBOX COVER

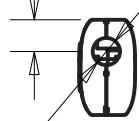
3.70 ± 0.15

3.60 ± 0.20

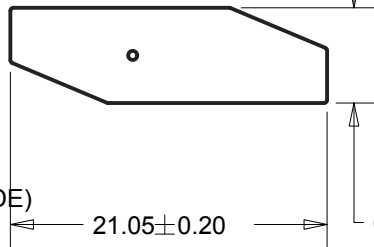


MICBOX CASE

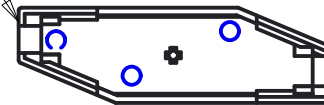
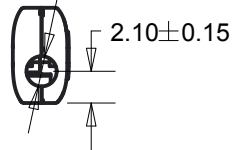
2.10 ± 0.15



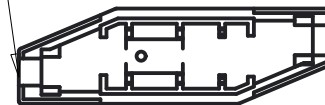
1.80 ± 0.15
(EARPHONE SIDE)



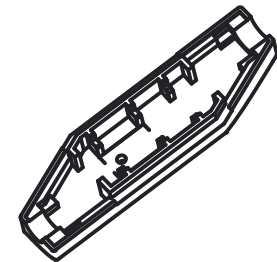
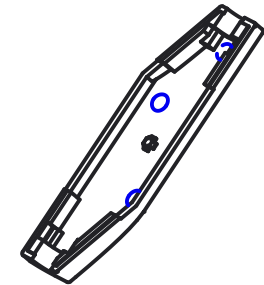
$\varnothing 2.00 \pm 0.05$



COVER



CASE



NOTE:

1. CABLE NOMINAL OD 1.5mm. MAX 2.1mm.

2. SEE SHEET 1.2 FOR ASSEMBLY REFERENCE INSTRUCTIONS.

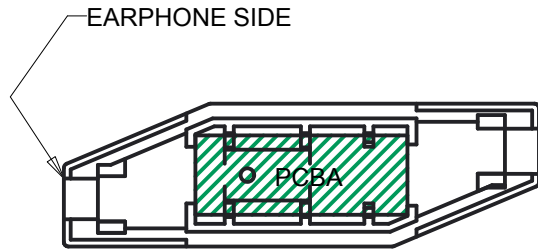
DIMENSIONS IN MILLIMETERS [INCHES]

KNOWLES ELECTRONICS
ITASCA, ILLINOIS U.S.A.

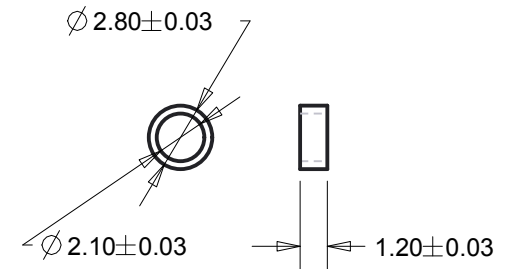
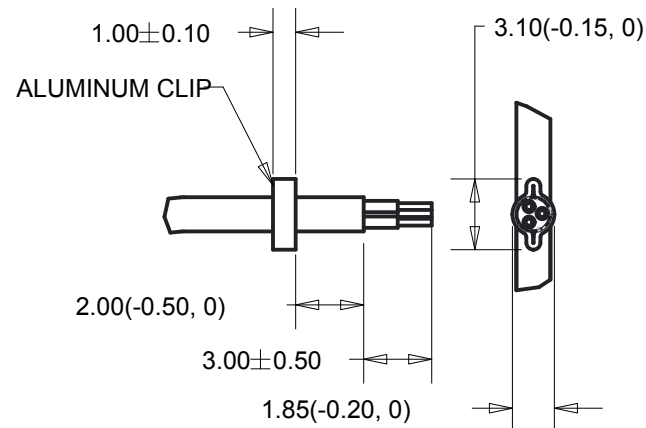
Revision	C.O. #	Implementation Date	RELEASE LEVEL	REVISION
			DESIGN	1
SCALE: 2:1			DR. BY	DATE
DO NOT SCALE DRAWING			G.N	4.8.14
TITLE: MICBOX COVER AND CASE			TC-32485-000	---
OUTLINE DRAWING			SHT 1.1	---
			APP. BY	DATE
			---	---

TC-32485-000

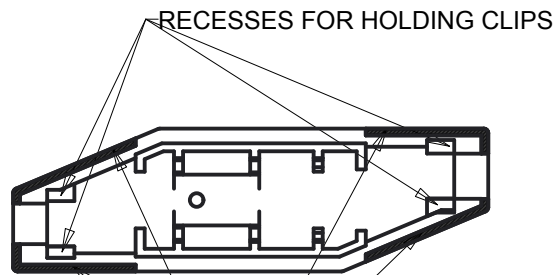
SHT 1.2



PCBA POSITION
IN MIC BOX CASE



ALUMINUM CLIP
BEFORE CRIMPED



RECESSES FOR HOLDING CLIPS

CEMENT (4 PLACES)

CEMENT AND AL CLIP POSITIONS
INSIDE OF MICBOX CASE

1. CABLE, CLIP, AND PCBA SHOWN FOR ASSEMBLY REFERENCE ONLY.
2. CONTACT KNOWLES FOR REFERENCE 3D MODEL.
3. ASSEMBLY INSTRUCTIONS
 - a. ASSEMBLE CABLES TO PCB.
 - b. POSITION PCB IN CASE POCKET.
 - c. POSITION CABLE WITH CRIMP CLIPS IN RECESSES SHOWN.
 - d. APPLY CEMENT WHERE INDICATED. SUGGEST LOCTITE 438 CEMENT.
 - e. ASSEMBLE COVER ONTO CASE. COVER, CASE, AND CABLE CLIPS TO BE SECURED BY CEMENT.

DIMENSIONS IN MILLIMETERS [INCHES]

Revision	C.O. #	Implementation Date	RELEASE LEVEL	REVISION
			DESIGN	1

SCALE: 3:1		DR. BY	DATE
DO NOT SCALE DRAWING		G.N	4.8.14
		CK. BY	DATE
TITLE: MICBOX ASSEMBLY REFERENCE		---	---
		APP. BY	DATE
OUTLINE DRAWING		---	---

KNOWLES ELECTRONICS
ITASCA, ILLINOIS U.S.A.

TC-32485-000

SHT 1.2

TC-32485-000		KNOWLES ELECTRONICS			TC-32485-000	
Sheet 4.1		ITASCA, ILLINOIS U.S.A.			Sheet 4.1	
Dr.	By G.N	Date 4.8.14	Subject: MICBOX COVER AND CASE		Revision 1	
Ch.	---	---			Release Level	
App.	---	---			DESIGN	
COL. 1		2	3		4	
Part or Dwg. no.		Tot. Req.	Nomenclature:		Applicable Specs or Remarks	Item No. / Line No.
TC-129-001		100	MICBOX CASE			1 / 1
TC-234-001		100	MICBOX COVER			2 / 2

--	--	--	--

REVISION		TC-32485-000 Sheet 4.1
PROPRIETARY NOTE: THIS DOCUMENT CONTAINS INFORMATION WHICH IS THE PROPRIETARY PROPERTY OF KNOWLES ELECTRONICS, LLC. OR ITS AFFILIATED ENTITIES. IT IS ISSUED IN STRICT CONFIDENCE AND SHALL NOT BE REPRODUCED, COPIED, USED, OR DISCLOSED TO ANY THIRD PARTY PARTIALLY OR WHOLLY IN ANY MANNER WITHOUT PRIOR WRITTEN PERMISSION OF, AND MUST BE RETURNED UPON REQUEST BY, KNOWLES ELECTRONICS, LLC.		

REV D