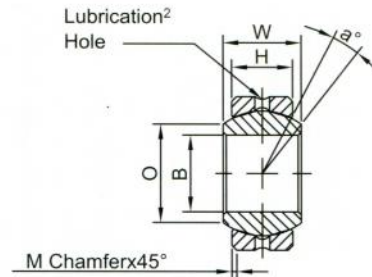
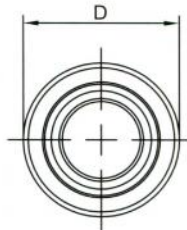


COM8T

COM & HCOM Series Spherical Bearings

(PTFE Liners Available)¹



| Part No. | DIMENSIONS IN INCHES | | | | | | | a° Misalign. Angle | Radial Static Load Capacity Lbs. | Approx Brg. Wt. Lbs. |
|--------------|-----------------------|-------------------------|-------------|-------------|------------------------|----------------------|----------------------|--------------------------|----------------------------------------------|-------------------------------|
| | B +.0015 -.0005 | D +0.0000 -0.0007 | H ±0.005 | W ±0.005 | O Flat Dia. Ref. | M Chamfer Ref. | Ball Dia. Ref. | | | |
| COM-3 | .1900 | .5625 | .218 | .281 | .293 | .015 | .406 | 11 | 3,250 | .014 |
| COM-4 | .2500 | .6562 | .250 | .343 | .364 | .022 | .500 | 13.5 | 4,950 | .022 |
| COM-5 | .3125 | .7500 | .281 | .375 | .419 | .032 | .562 | 12 | 6,475 | .030 |
| COM-6 | .3750 | .8125 | .312 | .406 | .516 | .032 | .656 | 10 | 8,400 | .038 |
| COM-7 | .4375 | .9062 | .343 | .437 | .530 | .032 | .687 | 8 | 9,453 | .047 |
| <u>COM-8</u> | .5000 | 1.0000 | .390 | .500 | .640 | .032 | .813 | 9.5 | 13,250 | .065 |
| COM-9 | .5625 | 1.0937 | .437 | .562 | .710 | .032 | .906 | 9.5 | 16,630 | .086 |
| COM-10 | .6250 | 1.1875 | .500 | .625 | .780 | .032 | 1.000 | 8.5 | 21,280 | .110 |
| COM-12 | .7500 | 1.4375 | .593 | .750 | .920 | .044 | 1.187 | 9 | 31,920 | .204 |
| COM-14 | .8750 | 1.5625 | .703 | .875 | .980 | .044 | 1.312 | 9.5 | 41,960 | .263 |
| *COM-16 | 1.0000 | 1.7500 | .797 | 1.000 | 1.118 | .044 | 1.500 | 10 | 55,200 | .386 |
| *HCOM-16 | 1.0000 | 2.0000 | .781 | 1.000 | 1.360 | .032 | 1.687 | 9 | 70,820 | .553 |
| *HCOM-19 | 1.1875 | 2.3750 | .937 | 1.187 | 1.610 | .032 | 2.000 | 8.5 | 100,730 | .895 |
| *HCOM-20 | 1.2500 | 2.3750 | .937 | 1.187 | 1.610 | .032 | 2.000 | 8.5 | 100,730 | .895 |
| *HCOM-24 | 1.5000 | 2.7500 | 1.094 | 1.375 | 1.860 | .032 | 2.312 | 8.5 | 135,950 | 1.358 |
| *HCOM-28 | 1.7500 | 3.1250 | 1.250 | 1.562 | 2.110 | .044 | 2.625 | 8 | 176,370 | 1.948 |
| *HCOM-32 | 2.0000 | 3.5000 | 1.375 | 1.750 | 2.360 | .044 | 2.937 | 8.5 | 217,060 | 2.650 |

*Bore tolerance on these items is As follows-
INCH +.0025,-.0005.

Note:1.PTFE liners use suffix T Ex COM-10T.

2.PTFE liners have no lubrication holes or groove in race .

Specifications

Race -Carbon steel, protective coated for corrosion resistance.

Ball -Bearing steel,heat treated,hard chrome plated.