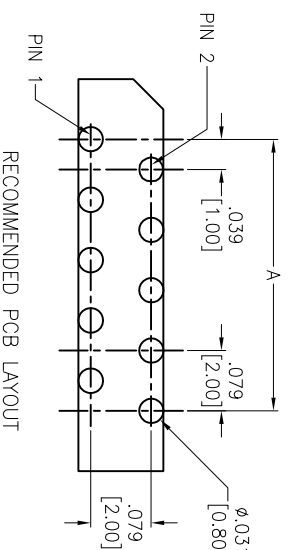
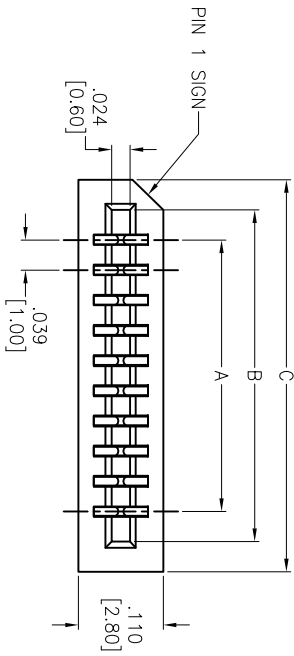
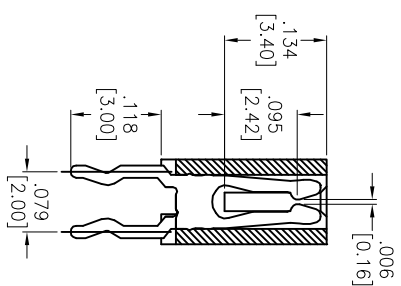
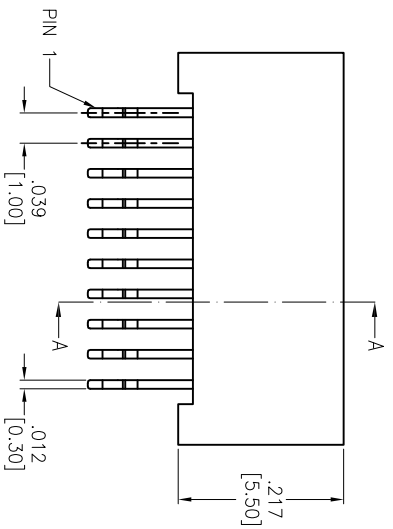
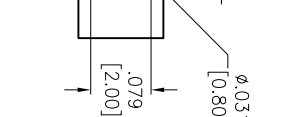


APPROVED: _____
 DATE: _____ TITLE: _____

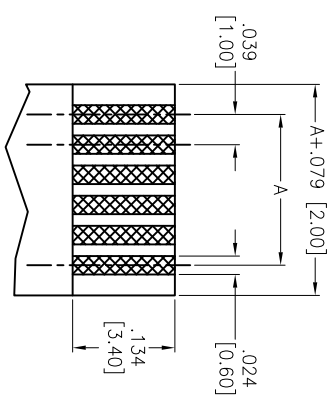
Rev	AWO #	Description	Date	Appr
-		RELEASED	3/23/05	
A		CHANGED INSULATOR MATERIAL	8/13/09	
B		REVISED SPEC.	05/09/12	
C		REDRAWN	2/6/14	HR/KW



RECOMMENDED PCB LAYOUT



FPC/FPC T = .012 ± .002 [0.30 ± 0.05]



SPECIFICATIONS:

- Material: Insulator: Hi-Temp Thermoplastic, rated UL 94V-0
- Insulator color: Black
- Contacts: Phosphor Bronze
- Plating: Tin over Nickel underplate overall
- Electrical: Operating voltage: 50 VAC max
- Current rating: 0.5 Amps max
- Contact resistance: 30 mohms max initial
- Insulation resistance: 500 Mohms min
- Dielectric withstanding voltage: 500 VAC for 1 minute
- Temperature Rating: Operating temperature: -20°C to +85°C
- Environmental: Lead free, RoHS compliant

Positions: 3 thru 30
 A = .039 [1.00] x No. of Spaces
 B = A + .083 [2.10]
 C = A + .157 [4.00]

UNLESS OTHERWISE SPECIFIED	
ALL DIMENSIONS ARE INCHES [MM]	
TOLERANCES: EXCEPT AS NOTED	
INCHES	HOLDS
.X ± .10	ØXX ± .10
.XX ± .020	ØXXX ± .015
.XXX ± .015	ØXXXX ± .010
APPROVALS	DATE
DRAWN	SS
CHECKED	AY
APPROVED	

ADAM TECH
 909 Railway Avenue, Union, NJ 07083
 Phone: 908-687-5000 Fax: 908-687-5710

TITLE: LIF FLEX CIRCUIT CONNECTOR
 TOP ENTRY, .079 [2.00] ROW SPACING

SIZE	PART NO.	REV.
X	PQB-C-XX-1-20	C
REF: S00043T	SCALE: NTS	SHEET 1 OF 1

